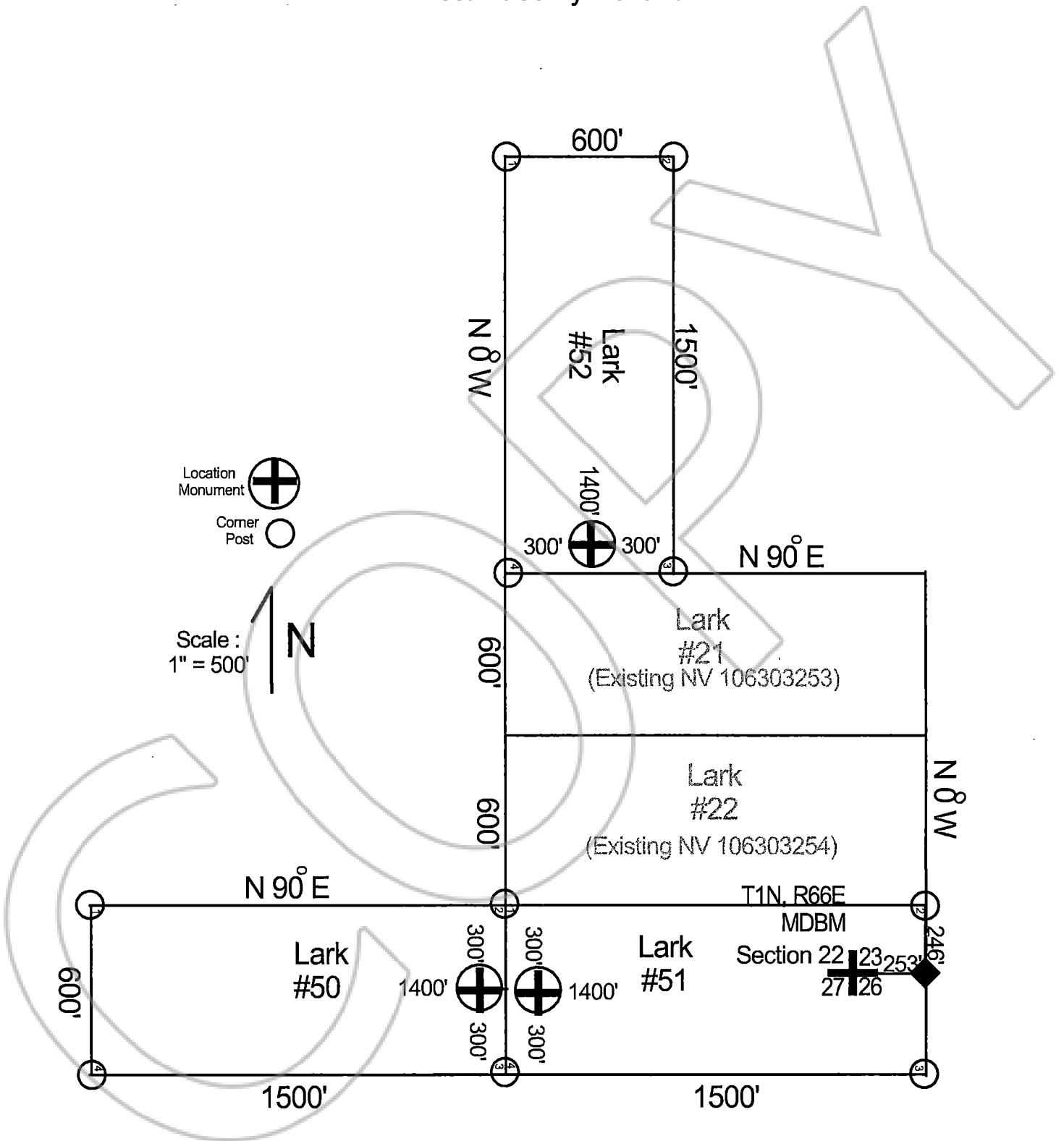




OFFICIAL RECORD  
 AMY ELMER, RECORDER

Amended  
 Map of the Lark #50, Lark #51, & Lark #52.  
 Lode Claims  
 Lincoln County Nevada



Note: ◆ is approx 5,025ft N 88° 24'E to section corner  $\begin{matrix} 23 & 24 \\ 26 & 25 \end{matrix}$  T1N, R66E MDBM

*H. Matson*

Located by:  
 Stampede Metals Corp.  
 12600 W. Mile Wide Rd  
 Marana, AZ 85653