



OFFICIAL RECORD
AMY ELMER, RECORDER

CORNER RECORD

SECTIONS: 16, 17, 18, 19, 20, 21, 28, 29, 30, T3N, R70E, MDM.

SURVEYOR'S CERTIFICATE

Sheet 1 of 5

I, Timothy J. Wolf, a Professional Land Surveyor, registered in the State of Nevada, as agent for Artisan Surveying Group, a NV LLC, certify;

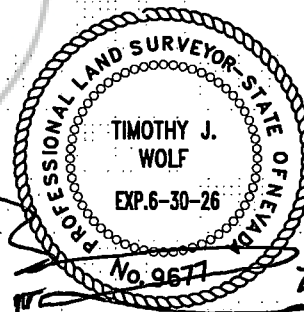
1) This Corner Record represents the establishment or restoration of a corner or accessory to a corner conducted under my direct supervision.

2) The monument or accessories perpetuated lie within the Section(s), Townships, and Ranges as noted above, as referenced to the Mount Diablo Meridian, Clark County, Nevada, and the establishment or restoration was completed on July 25, 2024.

3) This Corner Record has been filed pursuant to N.R.S. 329.140 or N.R.S. 329.150 and complies with the provisions of Nevada Administrative Code Section 329 and any local ordinances in effect on the date that the establishment or restoration was completed.

4) The monument or witness corner monument and accessories found are of the character shown, occupy the positions indicated and are of sufficient durability (latter solely if established by Artisan Surveying Group).

*Timothy J. Wolf
Professional Land Surveyor
Nevada License No. 9677
Agent, Artisan Surveying Group, a NV LLC*



RECORDER, PLEASE RETURN TO:
ALTA, LLC
P.O. Box 33434
Las Vegas, NV 89133
(702) 233-3451
www.ArtisanGroupUSA.com

20240725 CORNER RECORD ACCESSORY

PAT & KENA GLOECKNER, WILDCAT WASH/DEBRIS BASIN, EAGLE VALLEY, NV

Project: 20240725 GLOECKNER WILDCAT S20 T3N R70E MDM AREA

Program: GrafNet Version 8.60.6717

Profile: JKW PROJECT AND ACAD CONTROL PIOCHE

Source: Static Network

Equip: 4-Leica GS14, 1-Leica GR25, Leica CORS

Datum: NGS NAD83(2011)

Control: CORS, CTCORS, Local Ref Station (4-Total)

Geoid: GEOID18(CONUS).wpg [NAVD88] (Absolute correction)

Note: BOLD point numbers are those that were reestablished per Bureau of Land Management 1871, 1930, 1973 and 2009 Manuals of Surveying Instructions to Original, Completion, Dependent Resurveys, and current era resolution, respectively, as applicable.

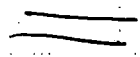
GCDB# , North Latitude, West Longitude , ELL-HT(FT), Description (Geographics in Degrees Minutes Seconds)

140400 , 38 06 43.92736, 114 10 56.18982 , 5953.054 , 2.5"D GLO BM 1935 AM

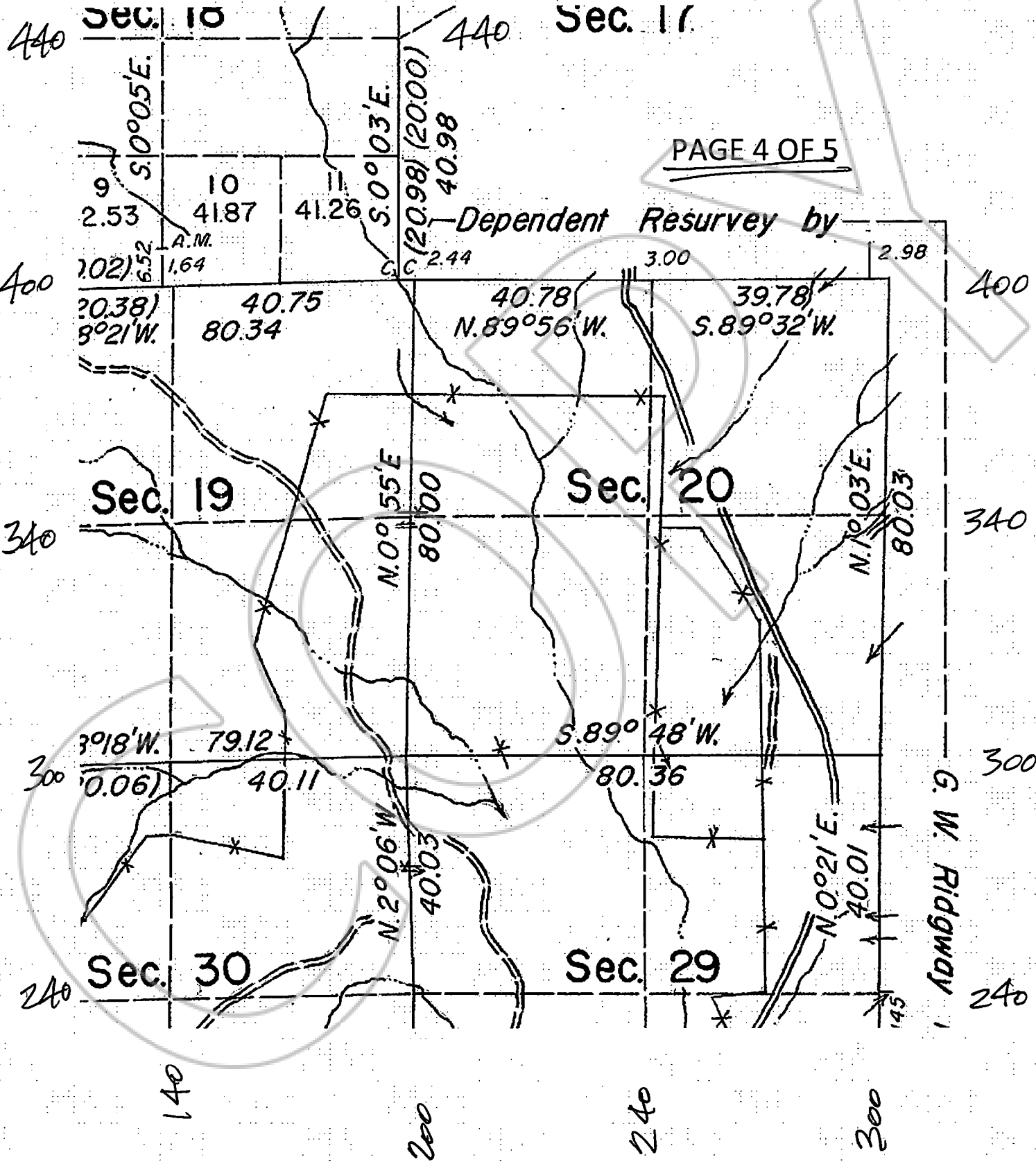
140401 , 38 06 39.67834, 114 10 56.18894 , 5936.758 , 3.25"D BLM BM 1975

140402 , 38 06 39.70915, 114 10 54.83933 , 5928.478 , 3.25"D BLM BM 1975

200300 , 38 05 48.28852, 114 10 22.26292 , 5857.420 , 3.25"D BLM BM 1975



200340 , 38 06 14.38135, 114 10 21.72624 , 5905.306 , 3.25"D BLM BM 1975
200400 , 38 06 40.47593, 114 10 21.17508 , 5875.359 , 1.5"D AM PLS 9677
200401 , 38 06 40.42476, 114 10 23.20956 , 5874.777 , 3.25"D BLM BM 1975
200440 , 38 07 07.18070, 114 10 23.20825 , 5895.863 , 2.5"D GLO BM 1935/75
240300 , 38 05 48.37472, 114 09 49.08635 , 5847.284 , 3.25"D BLM BM 1975
240400 , 38 06 40.44428, 114 09 47.50751 , 5886.655 , 2.5"D GLO BM 1935
240401 , 38 06 40.43716, 114 09 50.11275 , 5881.080 , 2.5"D GLO BM 1935
300300 , 38 05 48.46283, 114 09 15.90800 , 5898.336 , 2.5"D GLO BM 1935
300340 , 38 06 14.55705, 114 09 15.28482 , 5895.761 , 1.5"D AM PLS 9677
300400 , 38 06 40.65092, 114 09 14.66151 , 5923.914 , 2.5"D GLO BM 1935
300401 , 38 06 40.63270, 114 09 17.12630 , 5921.111 , 2.5"D GLO BM 1935
300440 , 38 07 07.14738, 114 09 17.12633 , 5959.067 , 2.5"D GLO BM 1935



PAGE 4 OF 5

Dependent Resurvey by

140 200 240 300

440 400 340 300 240

Sec. 18 589.92 80 80 80 80

Sec. 17 646.79 80 80 80 80

2885 3380 3875 179 4188 4173 414 4109

(20.155) 174 2837 40 24 40.02 15.20 4000 (20.62) (20.00)

N. 82°53'W. 8081 N. 89°56'W. 4078 S. 89°32'W. 3978 (17.02)

DEPENDENT RESURVEY

Sec. 19 (80.00) Sec. 20 3443 3522 3600 3679

PAGE 5 OF 5

Cor. not set

RESURVEY

(20.04) (40.07) (80.30) (18.59) 17.20

SURVEYED BY MONROE AND BATEMAN IN 1872

Sec. 30 (40.00) Sec. 29 974 N. 0°21'E. 1400 39 36 37.48

140 200 240 300

