



OFFICIAL RECORD
AMY ELMER, RECORDER

CORNER RECORD

PART SECTION 22, T1N, R67E; M.D.M.
PIOCHE TOWN, LINCOLN COUNTY, NV, USA

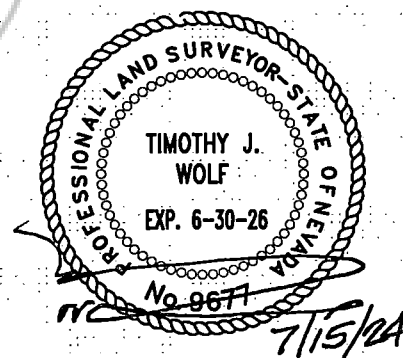
SURVEYOR'S CERTIFICATE

Sheet 1 of 2

I, Timothy J. Wolf, a Professional Land Surveyor, registered in the State of Nevada, acting as agent for Artisan Surveying Group, a Nevada Limited Liability Company, certify;

- 1) This Corner Record represents the establishment or restoration of a corner or accessory to a corner conducted under my direct supervision.
- 2) The monument or accessories perpetuated lie within the Section, Township, and Range as noted above, as referenced to the Mount Diablo Meridian, Lincoln County, Nevada, and the establishment or restoration was completed in July 15, 2024.
- 3) This Corner Record has been filed pursuant to N.R.S. 329.140 or N.R.S. 329.150 and complies with the provisions of Nevada Administrative Code Section 329 and any local ordinances in effect on the date that the establishment or restoration was completed.
- 4) The monument or witness corner monument and accessories found are of the character shown, occupy the positions indicated and are of sufficient durability.

Timothy J. Wolf
Professional Land Surveyor
Nevada License No. 9677
Agent, Artisan Surveying Group



Art

RETURN TO:
Artisan Surveying Group
A Nevada Limited Liability Company
P.O. Box 396
Pioche, NV 89043
(775) 962-LAND (5263)

CORNER RECORD

Sheet 2 of 2

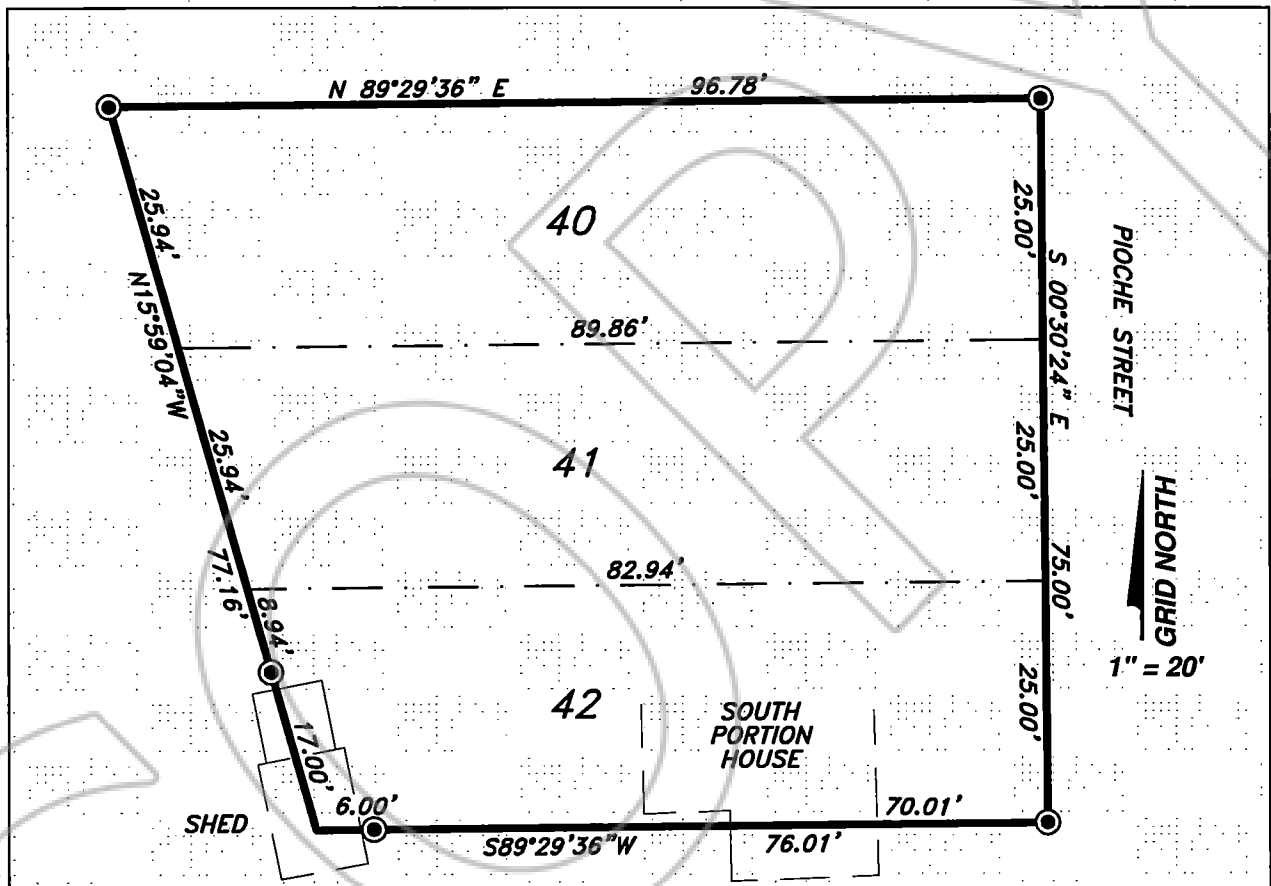
LOTS 40 THRU 42 BLOCK 36

for Patrick Smith & Brenda Ott-Udell

MONUMENT SYMBOLOGY

N.Y.Y E.XX.X Bulloch's Pioche Town Coordinate System: Ref. Doc. No. 1993-100051.

⊙ SET 1.5 Diameter Aluminum Monument: Artisan, PLS 9677.



CAVEATS

Caution; Southwest lot corner falls inside existing shed. Constructed monuments at two offsets, one on each of the south and west lines, offset distances stamped in the field and written on lath, as shown hereon.

REFERENCES

Pioche Townsite Addition: 1947-000057, LC Board Pioche Map: 1993-100051.

Patrick Smith & Brenda Ott-Udell Vesting Deed: 2023-166123.

Doc. 1990-94673 Mining Maps titled Abandon Fry House by Frank Hulse, PLS.

Artisan Surveying Group, a NV LLC

ArtisanSurveying.com

"Where Art & Measurement Science Assist"

(775) 962-LAND