

# CORNER RECORD

SECTION: 9, T02S, R68E, MDM



OFFICIAL RECORD  
AMY ELMER, RECORDER

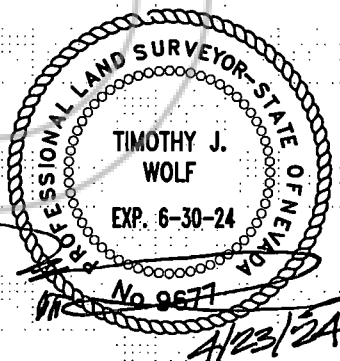
## SURVEYOR'S CERTIFICATE

Sheet 1 of 2

I, Timothy J. Wolf, a Professional Land Surveyor, registered in the State of Nevada, in capacity as agent for Artisan Surveying Group, a NV LLC, certify:

- 1) This Corner Record represents the establishment or restoration of corners or accessory to a corners conducted in my supervision.
- 2) The monument or accessories perpetuated lie within the Section, Township, and Range as noted above, as referenced to the Mount Diablo Meridian, Lincoln County, Nevada, and the establishment or restoration was completed on April 22, 2024.
- 3) This Corner Record has been filed pursuant to N.R.S. 329.140 or N.R.S. 329.150 and complies with the provisions of Nevada Administrative Code Section 329 and any local ordinances in effect on the date that the establishment or restoration was completed.
- 4) The monument or witness corner monument and accessories found are of the character shown, occupy the positions indicated and are of sufficient durability.

Timothy J. Wolf  
Professional Land Surveyor  
Nevada License No. 9677  
Agent, ASG, A NV LLC



*Art*

RETURN TO:  
Artisan Surveying Group, a NV LLC  
P.O. Box 396  
Pioche, NV 89043  
(775) 962-LAND (5263)





# CORNER RECORD

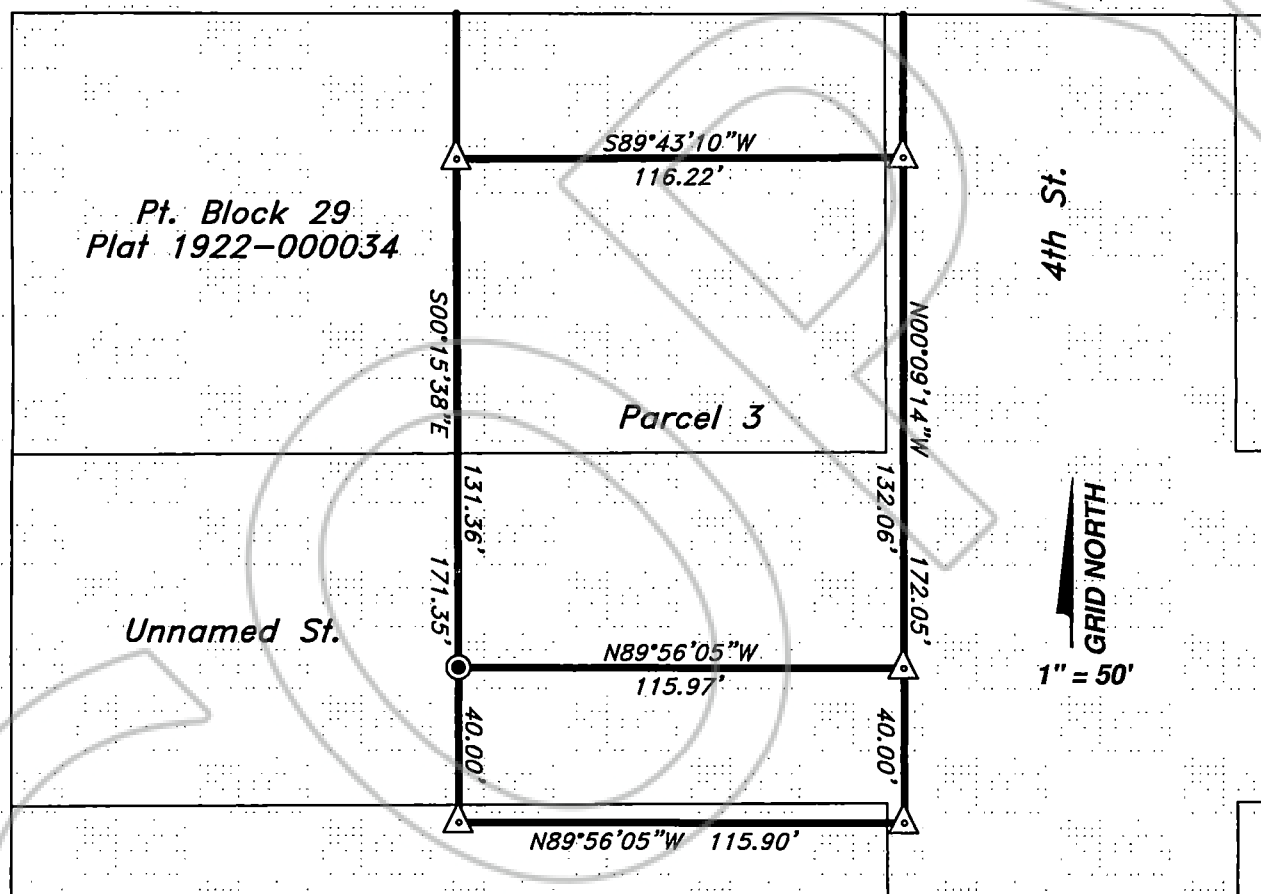
Sheet 2 of 2

Parcel 3, of Parcel Map for Robert & Rochelle Phillips

LC Doc No. 2020-158319

## EXHIBIT SYMBOLOGY

-  SET 1.5" Diameter Aluminum Monument: Artisan, PLS 9677.
-  FOUND 1.5" Diameter Plastic Monument, Lenard Smith Land Survey, PLS 12751.
-  Block Boundary Outlines, Panaca Plat, LC Doc. No. 1922-000034.
-  Phillips Parcel Map Parcel Lines, LC Doc. No. 2020-158319.



## CAVEATS

This survey retraces the Parcel Map for Robert & Rochelle Phillips. Said Parcel Map should stand upon it's own. No representation for additoinal title or patent research is accepted or assumed.

## REFERENCES

Panaca Patent March 13, 1879 Judge Rives: Vol. 11, No.2; Panaca Plat: LC Doc: 1922-000034; Parcel Map for R&R Phillips by Smith Land Survey: LC Doc 2020-158319.

Artisan Surveying Group, a NV LLC  
"Where Art & Measurement Science Assist"

ArtisanSurveying.com  
(775) 962-LAND