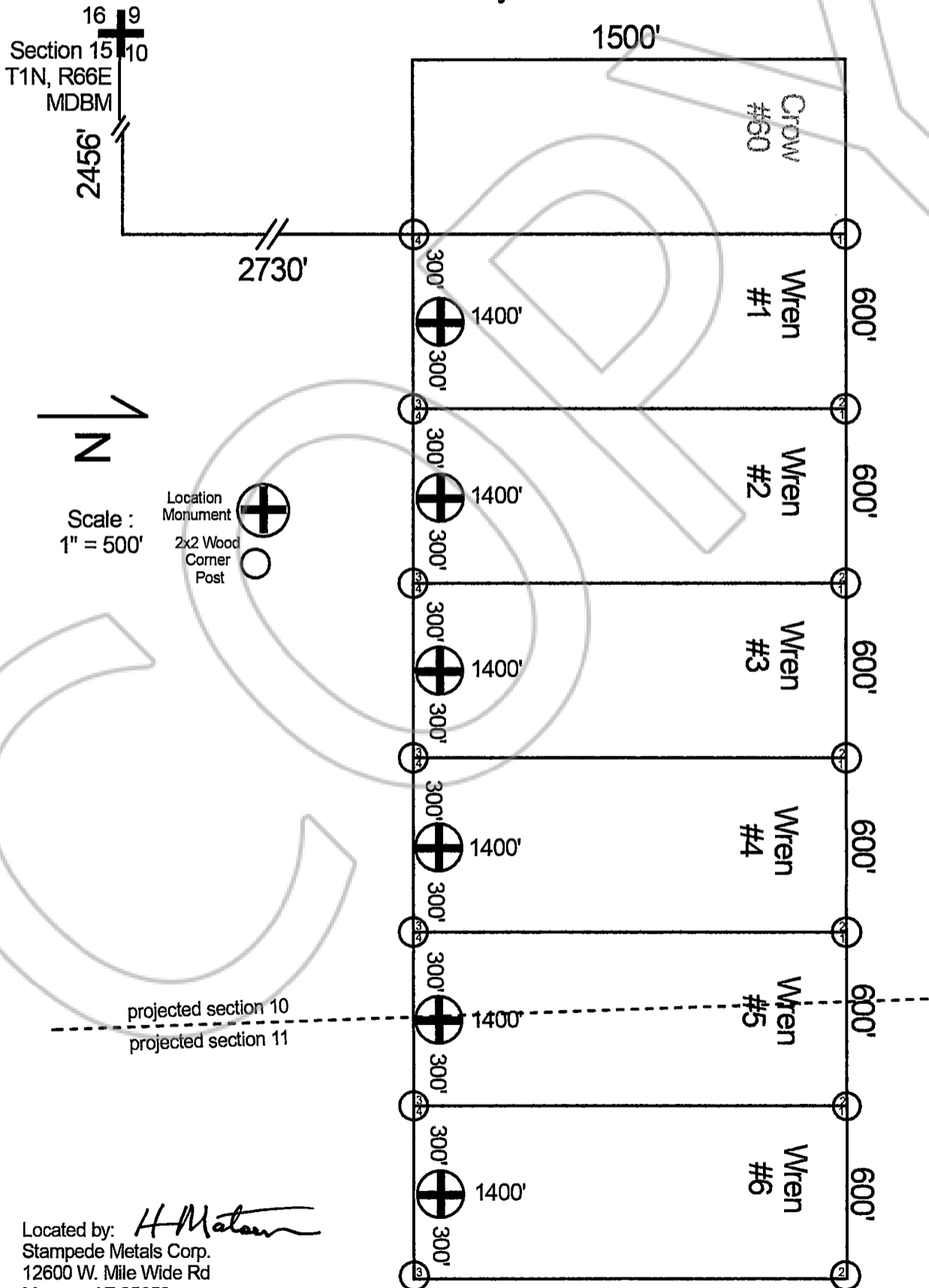




OFFICIAL RECORD
 AMY ELMER, RECORDER

Map of the Wren #1, Wren #2, Wren #3, Wren #4,
 Wren #5, & Wren #6.
 Lode Claims
 Lincoln County Nevada



Located by: *H. Matson*
 Stampede Metals Corp.
 12600 W. Mile Wide Rd
 Marana, AZ 85653