



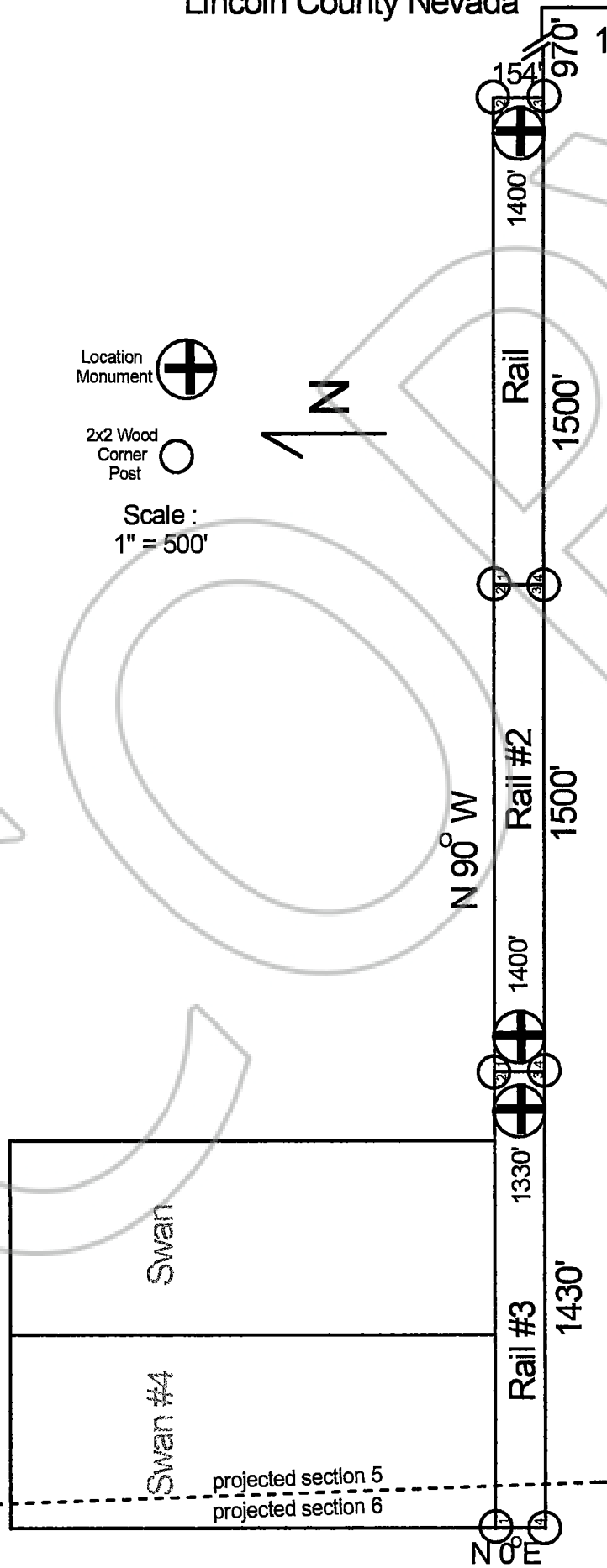
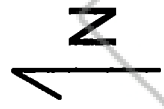


OFFICIAL RECORD  
 AMY ELMER, RECORDER

Map of the Rail, Rail #2, & Rail #3  
 Lode Claims  
 Lincoln County Nevada

SW Corner Section 4  
 NW Corner Section 9  
 SE Corner Section 8  
 NE Corner Section 5  
 T1N, R66E  
 MDBM

Location Monument   
 2x2 Wood Corner Post   
 Scale :  
 1" = 500'



*H. Matson*

Located by:  
 Stampede Metals Corp.  
 12600 W. Mile Wide Rd  
 Marana, AZ 85653