

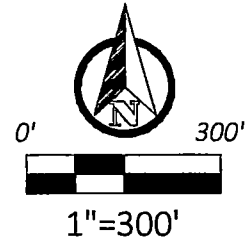
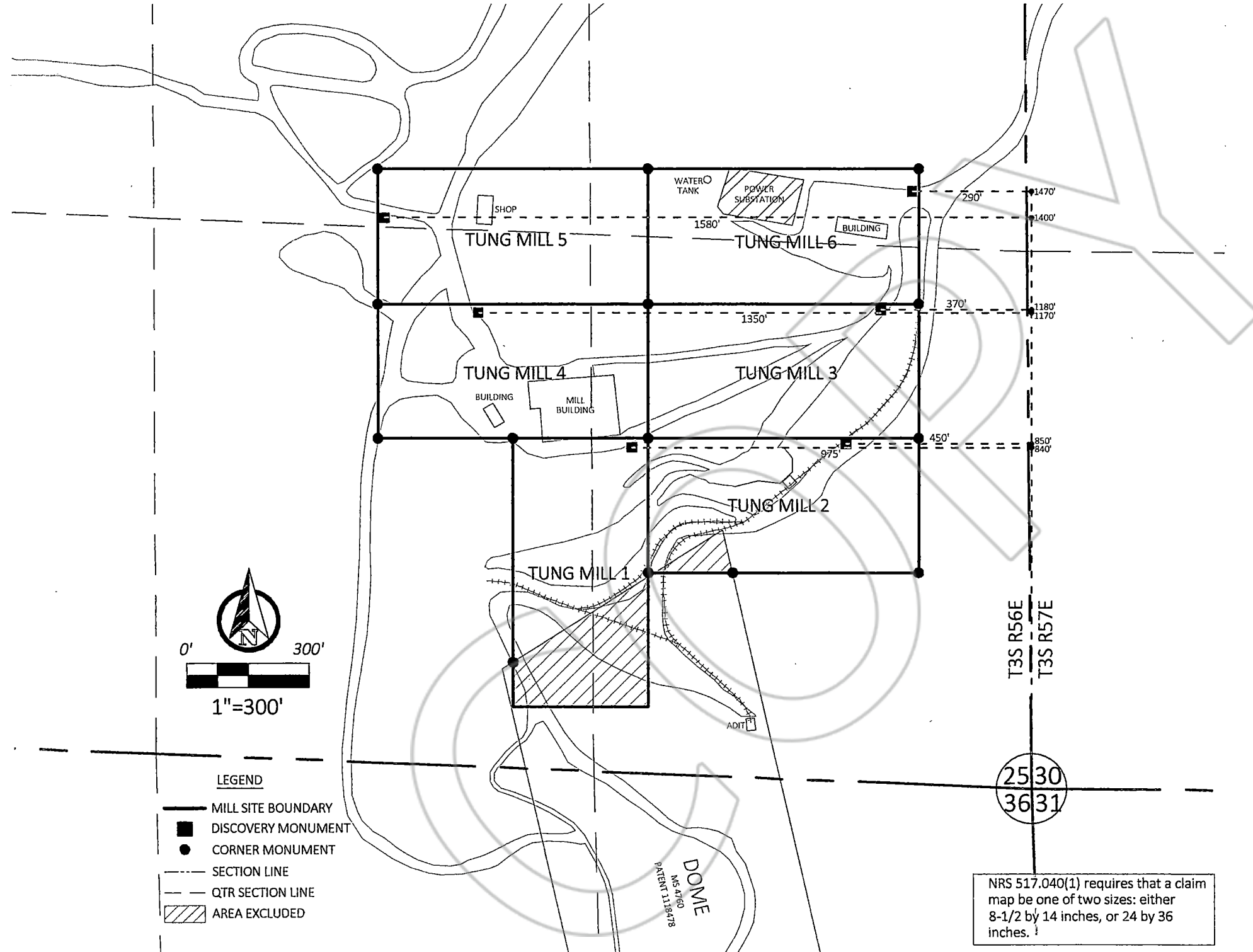
**PLAT**  
**OF THE MILL SITES OF**  
 Hinkinite Resources LLC  
 3438 West 5200 South  
 Lake Shore, UT 84660

**KNOWN AS THE**  
 Tung Mill 1-6

**MILL SITES IN THE**  
 SE 1/4, Section 25,  
 Township 3S, Range 56E, MDB&M,  
 Tem Piute Mining District,  
 Lincoln County, Nevada

EACH CONTAINING AN AREA OF 5 ACRES OR LESS.

**LOCATED ON**  
 October 18, 2023



- LEGEND**
- MILL SITE BOUNDARY
  - DISCOVERY MONUMENT
  - CORNER MONUMENT
  - - - SECTION LINE
  - · - · - QTR SECTION LINE
  - ▨ AREA EXCLUDED

NRS 517.040(1) requires that a claim map be one of two sizes: either 8-1/2 by 14 inches, or 24 by 36 inches.

LINCOLN COUNTY, NV **2023-166199**  
 Rec:\$102.00  
 Total:\$102.00  
 HINKINITE RESOURCES LLC  
 11/14/2023 01:41 PM  
 Pgs=1 AK



OFFICIAL RECORD  
 AMY ELMER, RECORDER

RECORDER'S STAMP