




OFFICIAL RECORD  
 AMY ELMER, RECORDER

The following Document contains no Personal Information as defined by NRS 603A.040

**MAP FILING FORM**

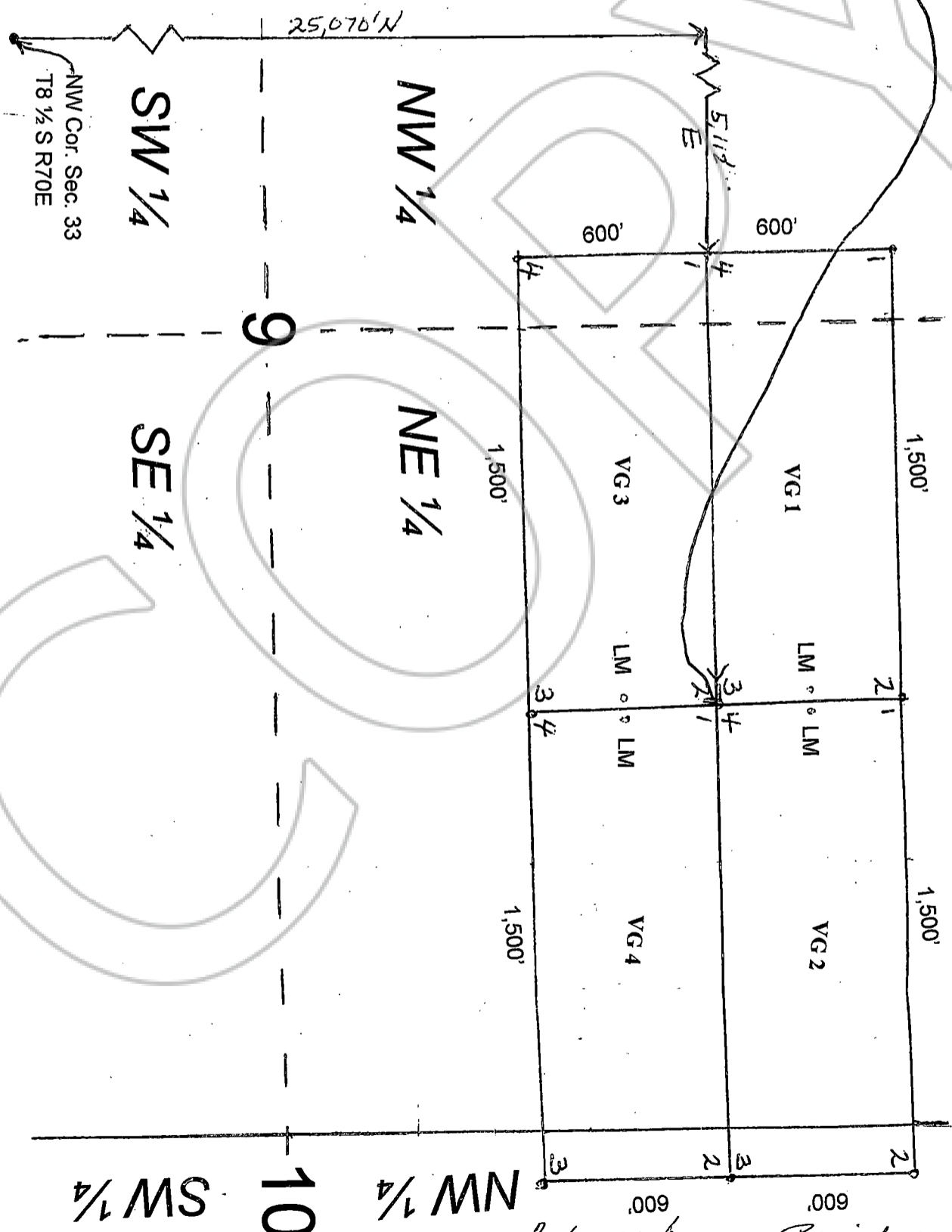
Map of the VG Mining Claim Group in Sections 9, 10, 14 and 15 of Township 8S, Range 70E and Section 36 of Township 7S Range 70E, MDM Vigo Mining District, Lincoln County, Nevada Located November 12 and 16, 2022

Locator name & address:  N  
 American Lithium Minerals, Inc.  
 6440 Sky Pointe Dr., Ste 140-149  
 Las Vegas, NV 89131  
 Location monuments denoted by "LM"  
 Scale: 1" = 500'

**RECORDER'S STAMP**

Map page 1 of 3

Tie Point: Common Corner of VG1, 2, 3 & 4 bears 25,070'N and 5,112'E from NW corner of Section 33, T 8 1/2 S R 70E



*Saba M. Baume President*