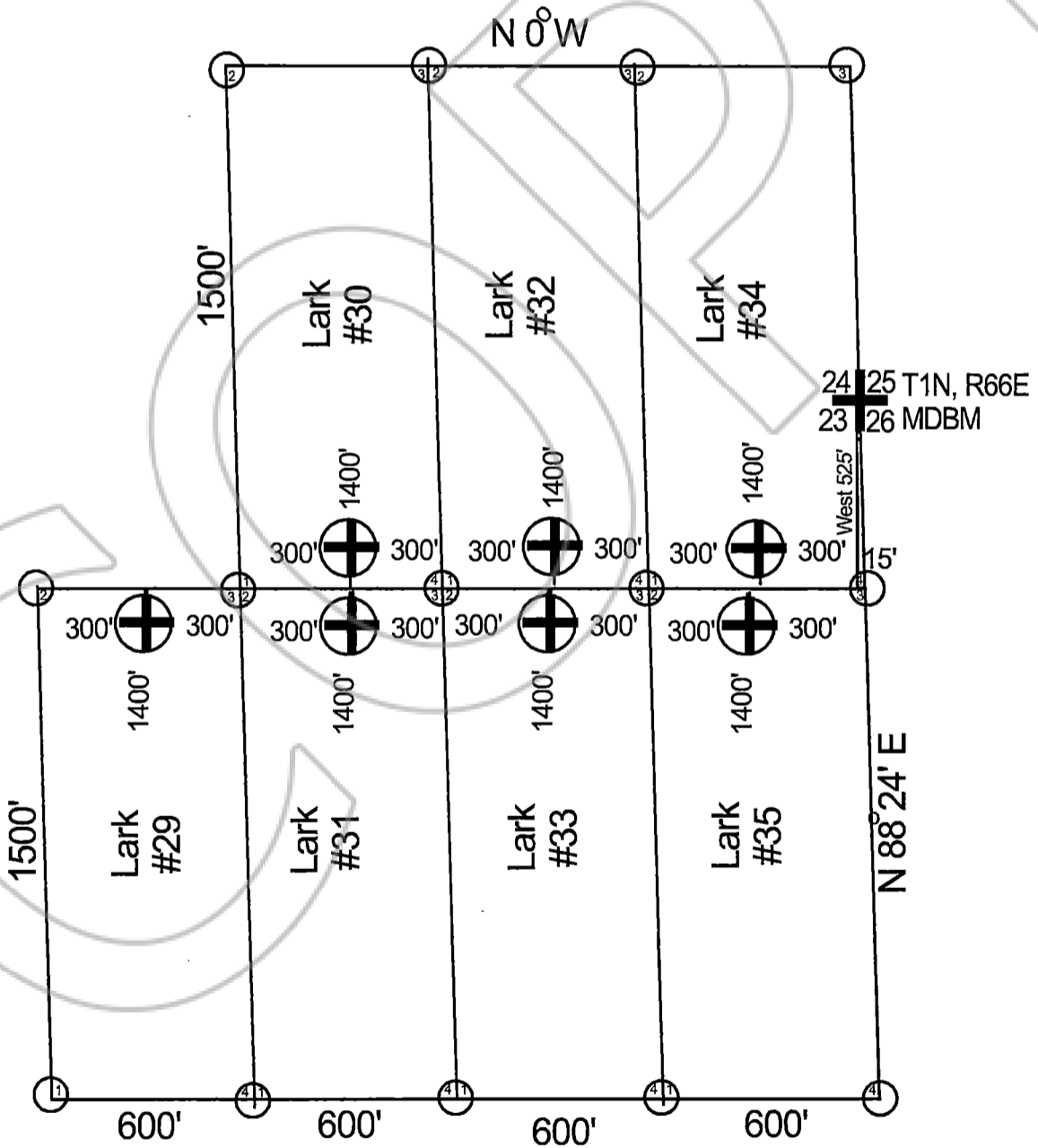
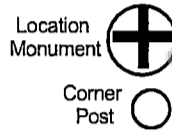
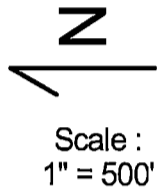




OFFICIAL RECORD
AMY ELMER, RECORDER

Map of the Lark #29, Lark #30, Lark #31, Lark #32,
Lark #33 Lark #34 & Lark #35.
Lode Claims
Lincoln County Nevada



H. Matson

Located by:
Stampede Metals Corp.
12600 W. Mile Wide Rd
Marana, AZ 85653