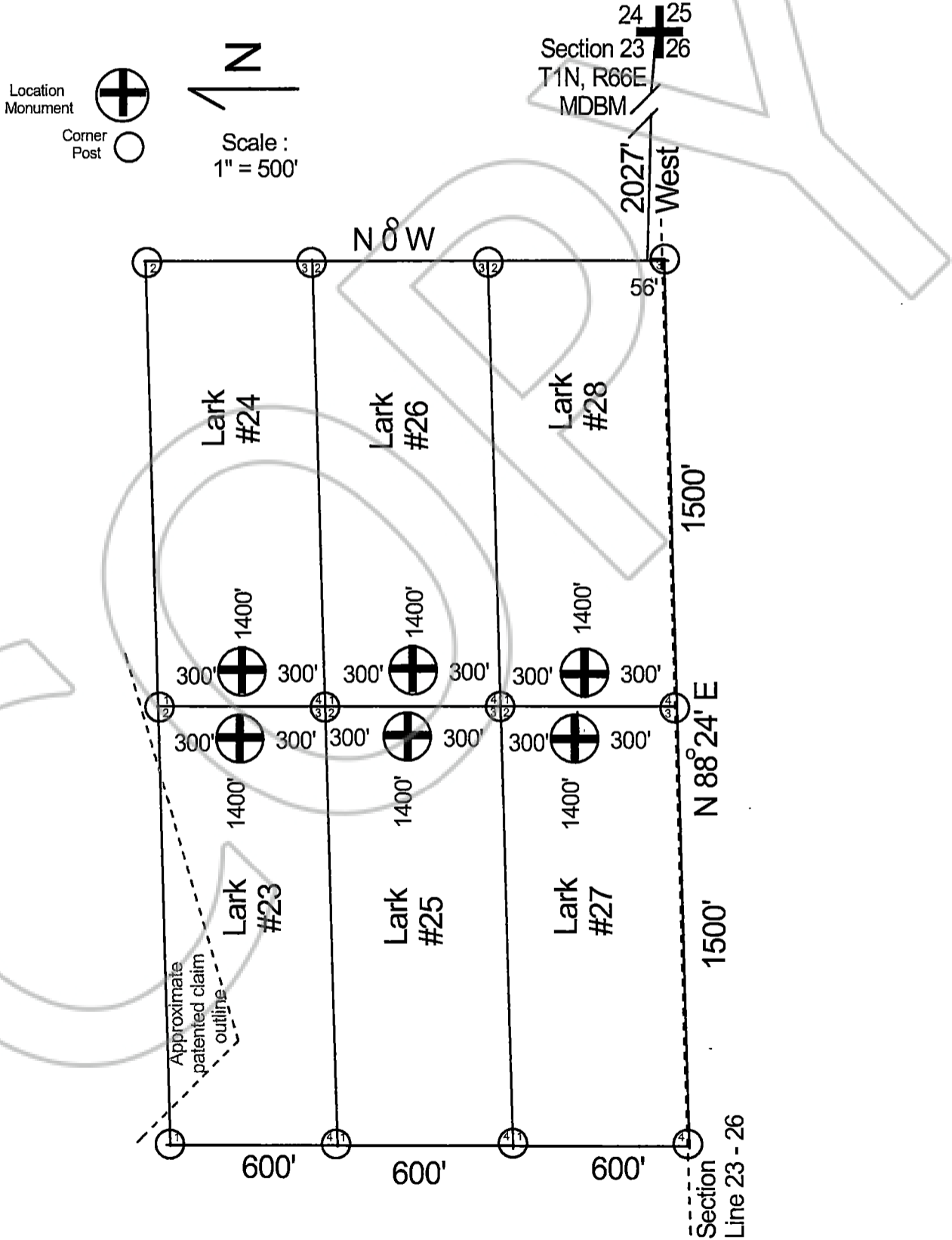




OFFICIAL RECORD
 AMY ELMER, RECORDER

Map of the Lark #23, Lark #24, Lark #25, Lark #26,
 Lark #27, & Lark #28.
 Lode Claims
 Lincoln County Nevada



H. Matton

Located by:
 Stampede Metals Corp.
 12600 W. Mile Wide Rd
 Marana, AZ 85653