



OFFICIAL RECORD
AMY ELMER, RECORDER

CORNER RECORD

SECTIONS 3 & 4, T3S, R67E, MDM

SURVEYOR'S CERTIFICATE

Sheet 1 of 2

I, Timothy J. Wolf, a Professional Land Surveyor, registered in the State of Nevada, acting as agent for Artisan Surveying Group, a NV LLC, certify;

- 1) This Corner Record represents the establishment or restoration of a corner or accessory to a corner conducted under my direct supervision.
- 2) The monument or accessories perpetuated lie within the Section 3, Township 3 South, Range 67 East, as noted above, as referenced to the Mount Diablo Meridian, Lincoln County, Nevada, and the establishment or restoration was completed on June 26, 2023.
- 3) This Corner Record has been filed pursuant to N.R.S. 329.140 or N.R.S. 329.150 and complies with the provisions of Nevada Administrative Code Section 329 and any local ordinances in effect on the date that the establishment or restoration was completed.
- 4) The monument or witness corner monument and accessories found are of the character shown, occupy the positions indicated and are of sufficient durability.

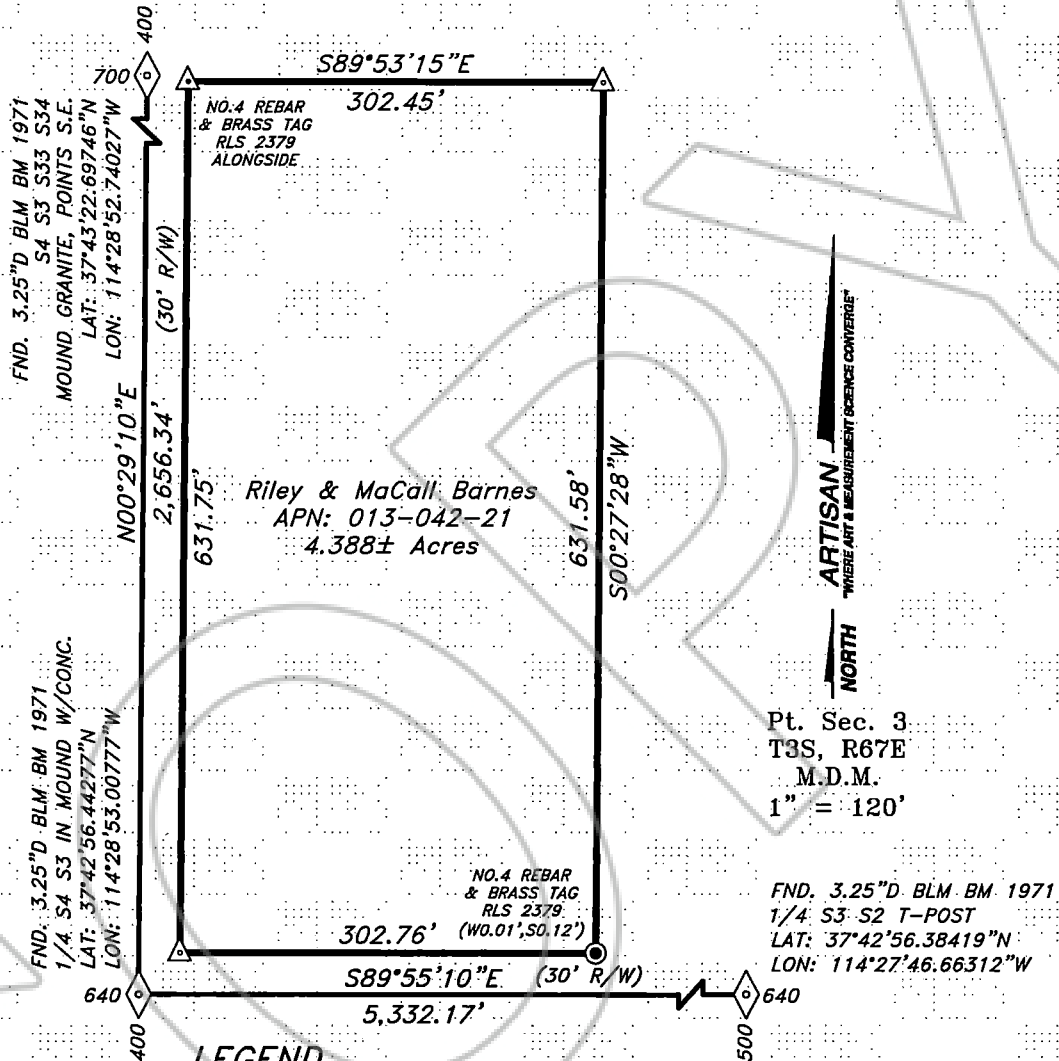


Artisan Surveying Group, a NV LLC
196 Gold St., P.O. Box 396
Pioche, NV 89043-0396
(775) 962-LAND

Timothy J. Wolf
Professional Land Surveyor
Nevada License No. 9677
Agent, Artisan Survey Group, a NV LLC

CORNER RECORD MONUMENT EXHIBIT

LOT 49, DOC 1972-51895 HIGHLAND KNOLLS UNIT NO.1
PART N/2, SEC 3, T3S, R67E, MDM, LINCOLN COUNTY, NEVADA






ARTISAN
"WHERE ART & MEASUREMENT SCIENCE CONVERGE"

NORTH

Pt. Sec. 3
T3S, R67E
M.D.M.
1" = 120'

FND. 3.25" D. BLM. BM. 1971
1/4 S3 S2 T-POST
LAT: 37°42'56.38419"N
LON: 114°27'46.66312"W

LEGEND

-  Lot Boundary Line
-  Section Tie Line
-  Section Corner, Found Monument, Set Monument

UNDER CONSTRUCTION FIELD CONDITION NOTICE

This exhibit represents the result of a field survey and conditions on Lot 49 as of 6/26/23.

REFERENCES

1. Document No. 1972-51895, Highland Knolls Unit No.1, Subdivision Map, Lincoln County Recorder's Office, Lincoln County, 181 North Main St., Suite 202, Pioche, NV 89043.
2. Deed Document No. 2023-163781, also Filed in the Office of Lincoln County Recorder.

Artisan Surveying Group
"Where Art & Measurement Science Converge"
P.O. Box 396, Pioche, NV 89043-0396
PAGE 2 OF 2



www.ArtisanSurveying.com
TWolf@ArtisanSurveying.com
(775) 962-LAND (5263)