

Recording Requested by:  
**Harrison Matson**

When Recorded Mail Document to:  
**12600 W. Mile Wide rd.  
Marana, Az. 85653**



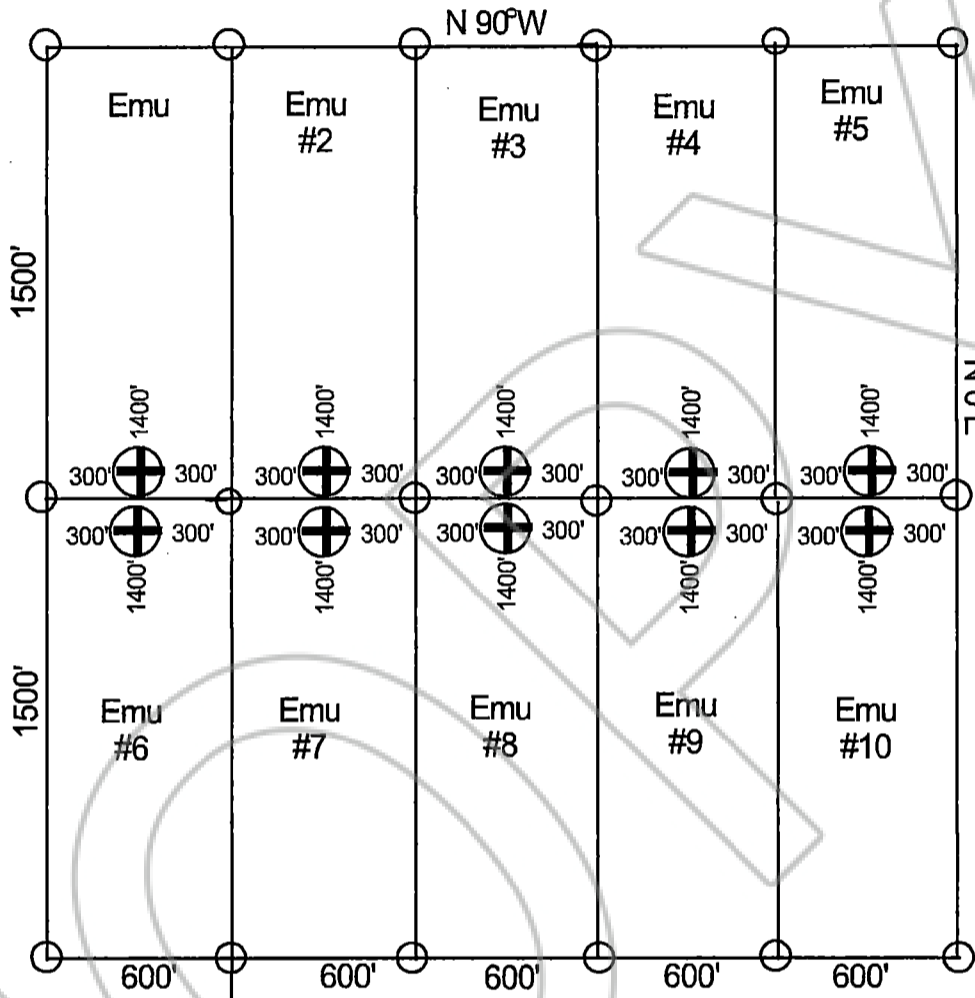
OFFICIAL RECORD  
AMY ELMER, RECORDER

For Recorders Use only

Title of Document:

**Map of the Emu, Emu #2, Emu #3, Emu #4,  
Emu #5, Emu #6, Emu #7, Emu #8, Emu #9,  
and Emu #10  
Lode Claims**

Map of the Emu, Emu #2, Emu #3, Emu #4, Emu #5,  
 Emu #6, Emu #7, Emu #8, Emu #9, & Emu #10.  
 Lode Claims  
 Lincoln County Nevada



Section 5  
 T1N, R66E  
 MDBM 4  
 8 9

3450'



Scale:  
 1" = 500'

