

Recording Requested by:
Stampede Metals
Corporation

When Recorded Mail Document to:
12600 W. Mile Wide rd.
Marana, Az. 85653



00006504202101599020020026



OFFICIAL RECORD
AMY ELMER, RECORDER

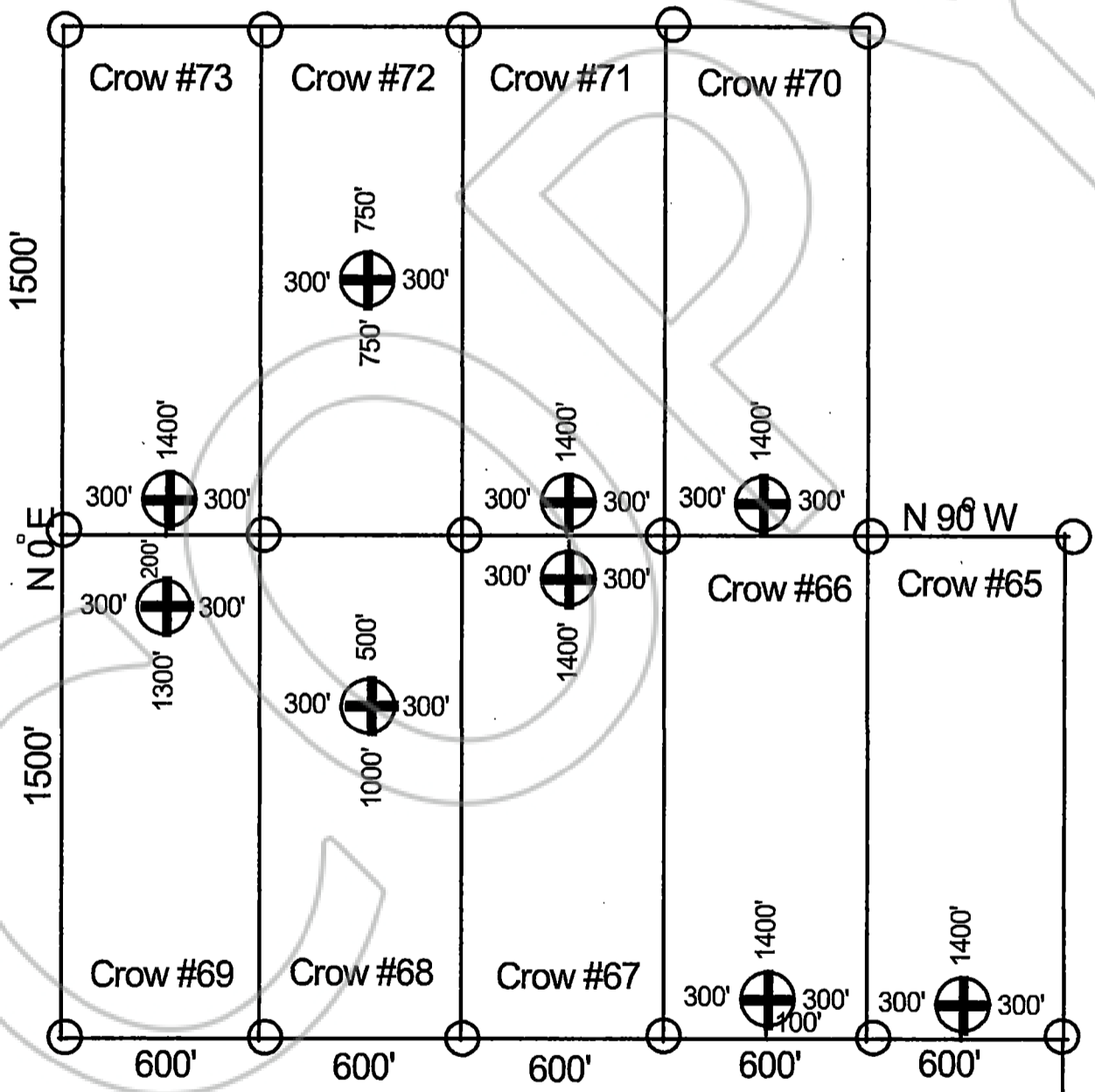
For Recorders Use only

Title of Document:

Map of the Crow #65, Crow #66, Crow #67,
Crow #68, Crow #69, Crow #70, Crow #71,
Crow #72, & Crow #73
Lode Claims

Map of the Crow #65, Crow #66, Crow #67, Crow #68, Crow #69,
 Crow #70, Crow #71, Crow #72 & Crow #73
 Lode Claims
 Lincoln County Nevada

Location Monument 
 Corner Post 
 Scale :
 1" = 500'



SW Corner Section 4
 SE Corner Section 5
 NE Corner Section 8
 NW Corner Section 9
 MDBM