



OFFICIAL RECORD
AMY ELMER, RECORDER

CORNER RECORD

SECTION: 22, T1N, R67E, MDM.

SURVEYOR'S CERTIFICATE

Sheet 1 of 2

I, *Lenard D. Smith, a Professional Land Surveyor, registered in the State of Nevada, as agent for Lenard Smith Land Survey, certify;*

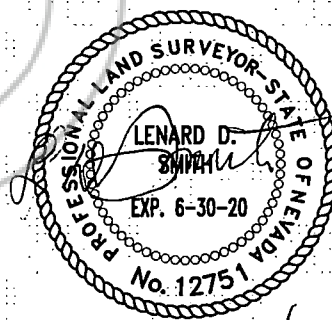
1) *This Corner Record represents the establishment or restoration of a corner or accessory to a corner conducted under my direct supervision.*

2) *The monument or accessories perpetuated lie within the Section(s), Townships, and Ranges as noted above, as referenced to the Mount Diablo Meridian, Lincoln County, Nevada, and the establishment or restoration was completed on June 30, 2020.*

3) *This Corner Record has been filed pursuant to N.R.S. 329.140 or N.R.S. 329.150 and complies with the provisions of Nevada Administrative Code Section 329 and any local ordinances in effect on the date that the establishment or restoration was completed.*

4) *The monument or witness corner monument and accessories found are of the character shown, occupy the positions indicated and are of sufficient durability (solely if established by Lenard Smith Land Survey; does not include found monuments by others).*

*Lenard D. Smith
Professional Land Surveyor
Nevada License No. 12751
Agent, Lenard Smith Land Survey*

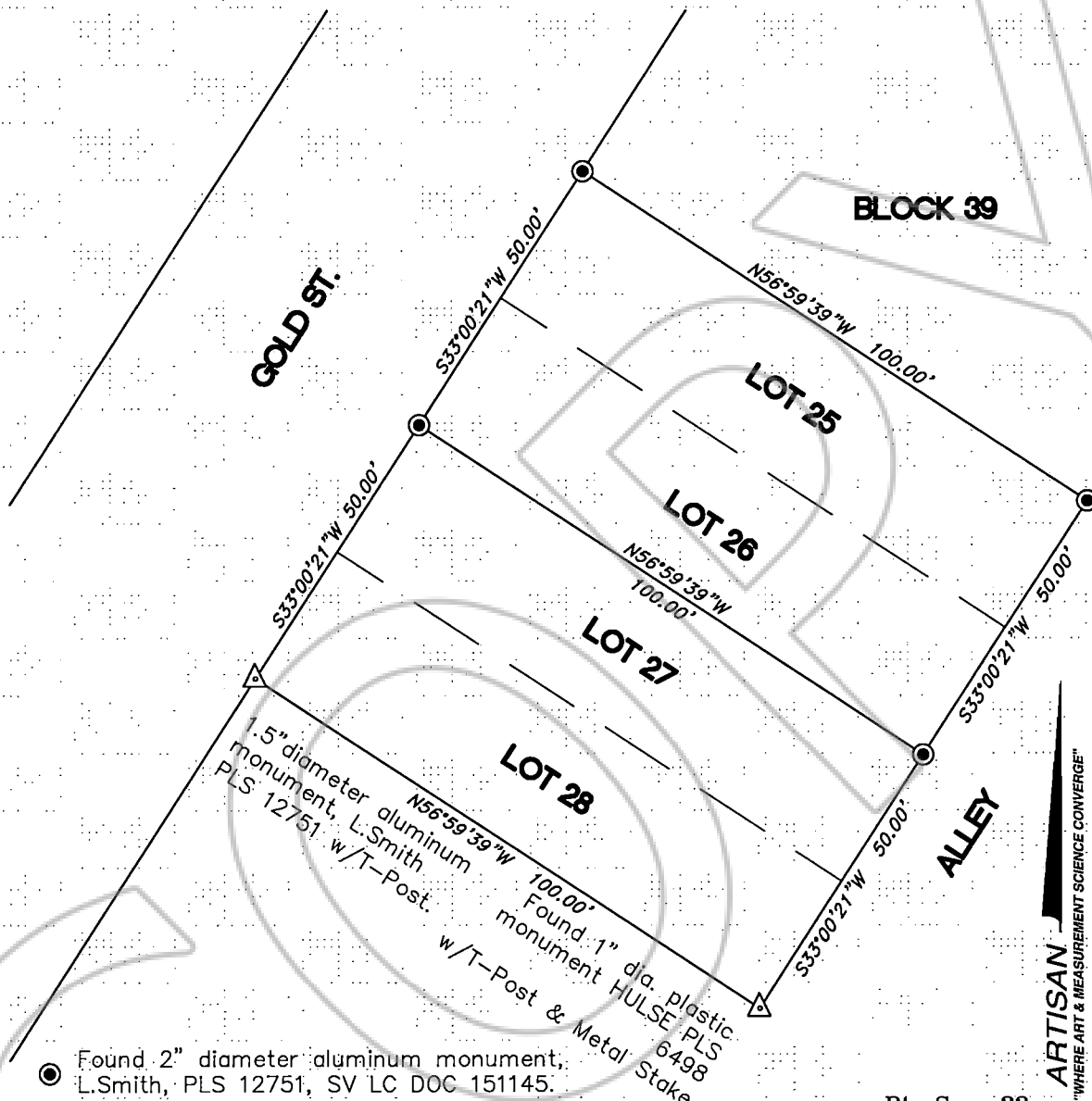


6/30/2020

RECORDER, PLEASE RETURN TO:
Nasitra Asset Leasing, LLC
P.O. Box 396
Pioche, NV 89043

CORNER RECORD

Sheet 2 of 2



● Found 2" diameter aluminum monument, L.Smith, PLS 12751, SV LC DOC 151145.

△ Found or Set Monument, as noted.

LEGEND

———— Exterior Block Boundary and Right of Way Line

REFERENCES

1. Pioche LC Doc. No.57; Supplement A Doc. No.61; Bulloch Map No. 100051; Lincoln County Recorder's Office.
2. Deed documents, LC No.'s 2013-142803, 2018-154909, Lincoln County Recorder's Office.

Lenard Smith Land Survey
 509 Main St.
 Caliente, NV 89009
 (775) 726-3365

Pt. Sec. 22
 T1N, R67E
 M.D.M.
 1"=20'

ARTISAN
 "WHERE ART & MEASUREMENT SCIENCE CONVERGE"
BULLOCH
NORTH