



CORNER RECORD

PT. SECTION: 22, T1N, R67E, MDM.

OFFICIAL RECORD
AMY ELMER, RECORDER

SURVEYOR'S CERTIFICATE Sheet 1 of 2

I, Timothy J. Wolf, a Professional Land Surveyor, registered in the State of Nevada, as agent for Artisan Surveying Group, a NV Limited Liability Company, certify;

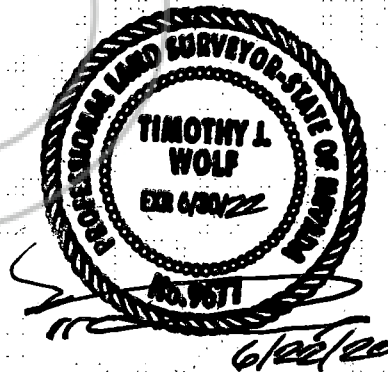
1) This Corner Record represents the establishment or restoration of a corner or accessory to a corner conducted under my direct supervision.

2) The monument or accessories perpetuated lie within the Section(s), Townships, and Ranges as noted above, as referenced to the Mount Diablo Meridian, Clark County, Nevada, and the establishment or restoration was completed on June 15, 2020 at the instance of Arthur D. and Barbara J. Washburn (aka Arthur Deen Washburn).

3) This Corner Record has been filed pursuant to N.R.S. 329.140 or N.R.S. 329.150 and complies with the provisions of Nevada Administrative Code Section 329 and any local ordinances in effect on the date that the establishment or restoration was completed.

4) The monument or witness corner monument and accessories found are of the character shown, occupy the positions indicated and are of sufficient durability (latter solely if established by Artisan Surveying Group, a NV Limited Liability Company).

Timothy J. Wolf
Professional Land Surveyor
Nevada License No. 9677
Agent, Artisan Surveying Group

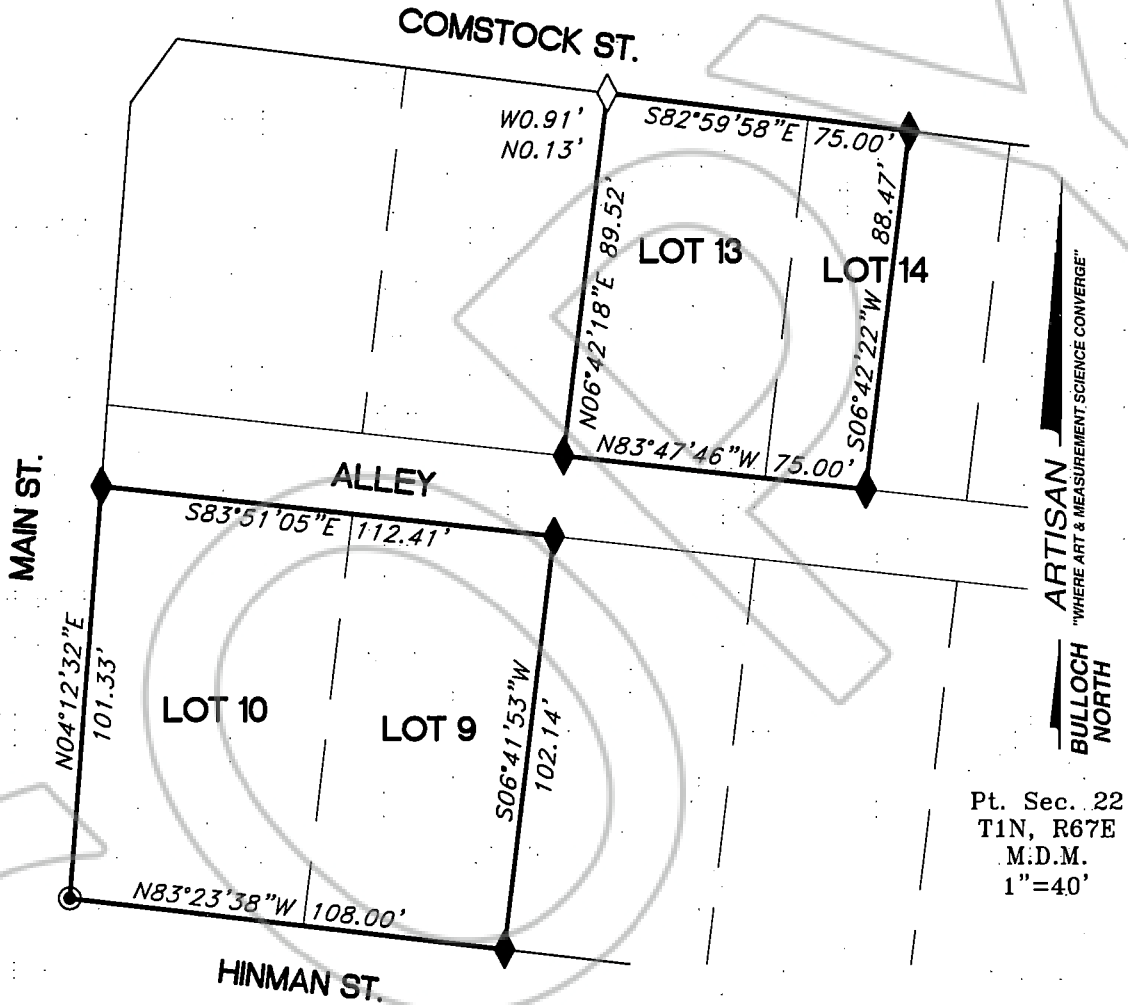


RECORDER, IF APPLICABLE; PLEASE RETURN TO:
Artisan Surveying Group
P.O. Box 396
Pioche, NV 89043
(775) 962-LAND
www.ArtisanSurveying.com

CORNER RECORD

Sheet 2 of 2

- ⊙ Set Magnail & 1.5" diameter aluminum tag "ARTISAN LAND SURVEY PLS 9677".
- ◆ Set 1.5" diameter aluminum monument on No.5 rebar "ARTISAN PLS 9677"
- ◇ Found 1.5" diameter plastic monument "L.SMITH, PLS 12751".



LEGEND

- Re-Monumented Lot Line Exteriors.
- Exterior Block Boundary, and Right of Way Line as applicable.
- Original Platted Lot Line.

REFERENCES

1. Pioche LC Doc. No. 55; Supplement A LC Doc. No.61; Bulloch Map LC Doc No. 100051; AMD Record of Survey map LC Doc No. 2019-157009. No Title Report was provided to surveyor.
2. LC Deed Docs 156887, and, 129612, on file with Lincoln County Recorder.

Artisan Surveying Group
 "Where Art & Measurement Science Converge"
 P.O. Box 396, Pioche, NV. 89043-0396



www.ArtisanSurveying.com
 TWolf@ArtisanSurveying.com
 (775) 962-LAND (5263)

Pt. Sec. 22
 T1N, R67E
 M.D.M.
 1"=40'