

CORNER RECC



OFFICIAL RECORD
AMY ELMER, RECORDER

PT. SECTION: 22, T1N, R67E, MDM.

SURVEYOR'S CERTIFICATE Sheet 1 of 3

I, Timothy J. Wolf, a Professional Land Surveyor, registered in the State of Nevada, as agent for Artisan Surveying Group, a NV Limited Liability Company, certify;

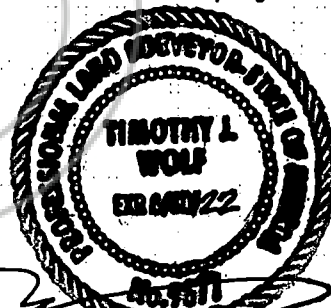
1) This Corner Record represents the establishment or restoration of a corner or accessory to a corner conducted under my direct supervision.

2) The monument or accessories perpetuated lie within the Section(s), Townships, and Ranges as noted above, as referenced to the Mount Diablo Meridian, Clark County, Nevada, and the establishment or restoration was completed on June 15, 2020 at the instance of Michael A. and Melanie Longi, Husband and Wife as Joint Tenants.

3) This Corner Record has been filed pursuant to N.R.S. 329.140 or N.R.S. 329.150 and complies with the provisions of Nevada Administrative Code Section 329 and any local ordinances in effect on the date that the establishment or restoration was completed.

4) The monument or witness corner monument and accessories found are of the character shown, occupy the positions indicated and are of sufficient durability (latter solely if established by Artisan Surveying Group, a NV Limited Liability Company).

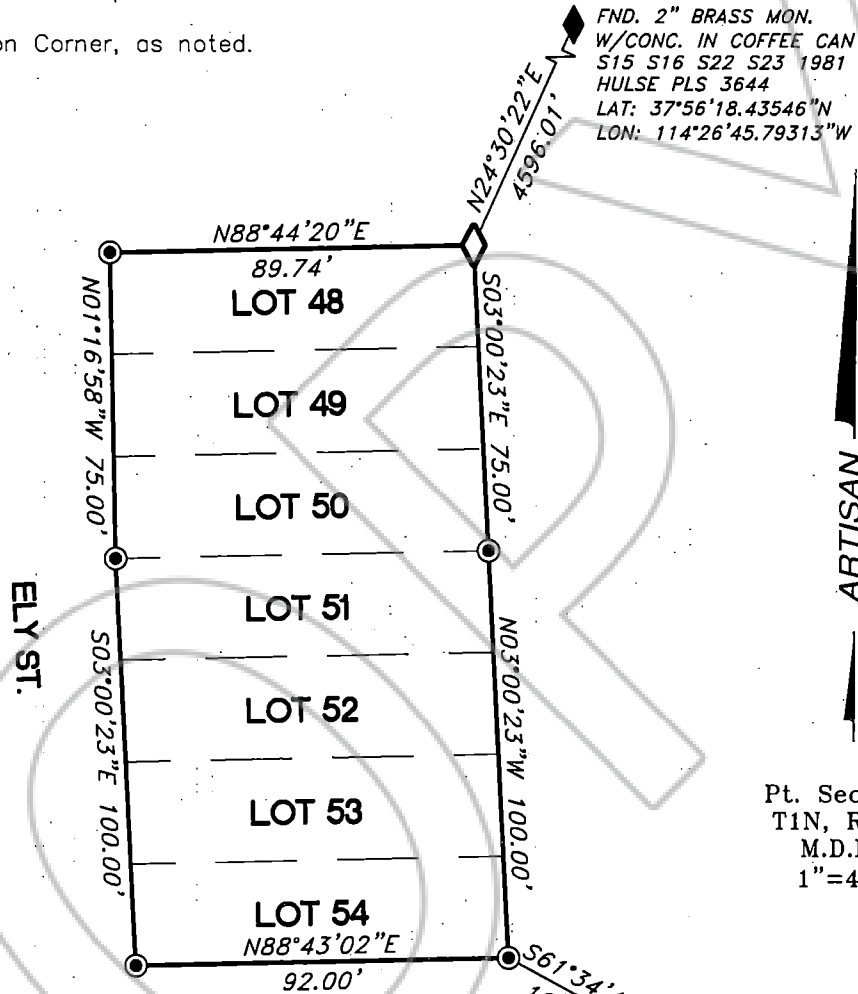
Timothy J. Wolf
Professional Land Surveyor
Nevada License No. 9677
Agent, Artisan Surveying Group



RECORDER, IF APPLICABLE; PLEASE RETURN TO:
Artisan Surveying Group
P.O. Box 396
Pioche, NV 89043
(775) 962-LAND
www.ArtisanSurveying.com

CORNER RECORD

- Set 1.5" diameter aluminum monument on No.5 rebar "ARTISAN PLS 9677"
- ◇ Found 1.5" diameter plastic monument FRANK "HULSE PLS 6498".
- ◆ Found Section Corner, as noted.



Pt. Sec. 22
T1N, R67E
M.D.M.
1"=40'

LEGEND

- Re-Monumented Lot Line Exteriors.
- Exterior Block Boundary, and Right of Way Line as applicable.
- Original Platted Lot Line.

REFERENCES

1. Pioché LC Doc. No. 55; Supplement A LC Doc. No.61; Bulloch Map LC Doc No. 100051; AMD Record of Survey map LC Doc No. 2019-157009. No Title Report was provided to surveyor.
2. Unrecorded survey prepared by Frank C. Hulse, PLS 6498, dated November 24, 1996 for Mr. and Mrs. Michael Longi. Copy provided by Michael Longi.
2. LC Deed Docs 103801, 103911, and, 104108, on file with Lincoln County Recorder.

Artisan Surveying Group
"Where Art & Measurement Science Converge"
P.O. Box 396, Pioche, NV 89043-0396



www.ArtisanSurveying.com
TWolf@ArtisanSurveying.com
(775) 962-LAND (5263)

