

The following Document contains no Personal Information as defined by NRS 603A.040



OFFICIAL RECORD
 AMY ELMER, RECORDER

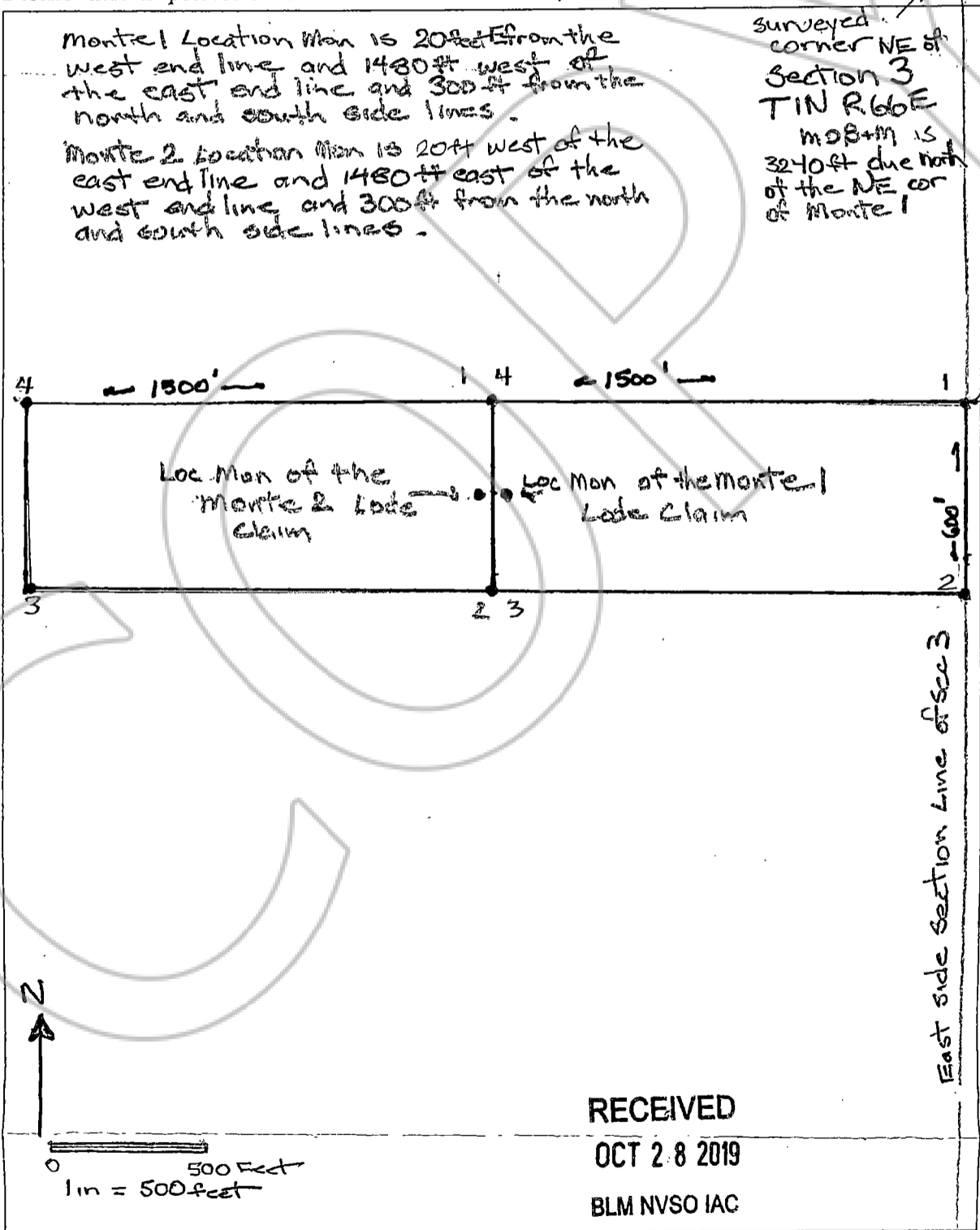
MAP FILING FORM

Map of the Monte Land 2 Mining Claim Group, in Section 3, Township 1N Range 66E, Meridian MDB&M, in the Highland Mining District, Lincoln County, Nevada, Located on the 30th day of September, 2019 by

Locator name and address (please print):
Bonanza Ventures S
3900 Bolivar Ct
Reno NV 89502

RECORDER'S STAMP
 NRS 515.040(1) requires that a claim map be one of two sizes: either 8-1/2 by 14 inches in paper, or 24 by 36 inches in Mylar or other transparent sheet.

Describe here the position of the Claim Location Monument, if one is used.



N 3240 FT from NE corner of Monte 1 to NE corner of Sec 3 (surveyed) TIN R66E

RECEIVED
 OCT 28 2019
 BLM NVSO IAC