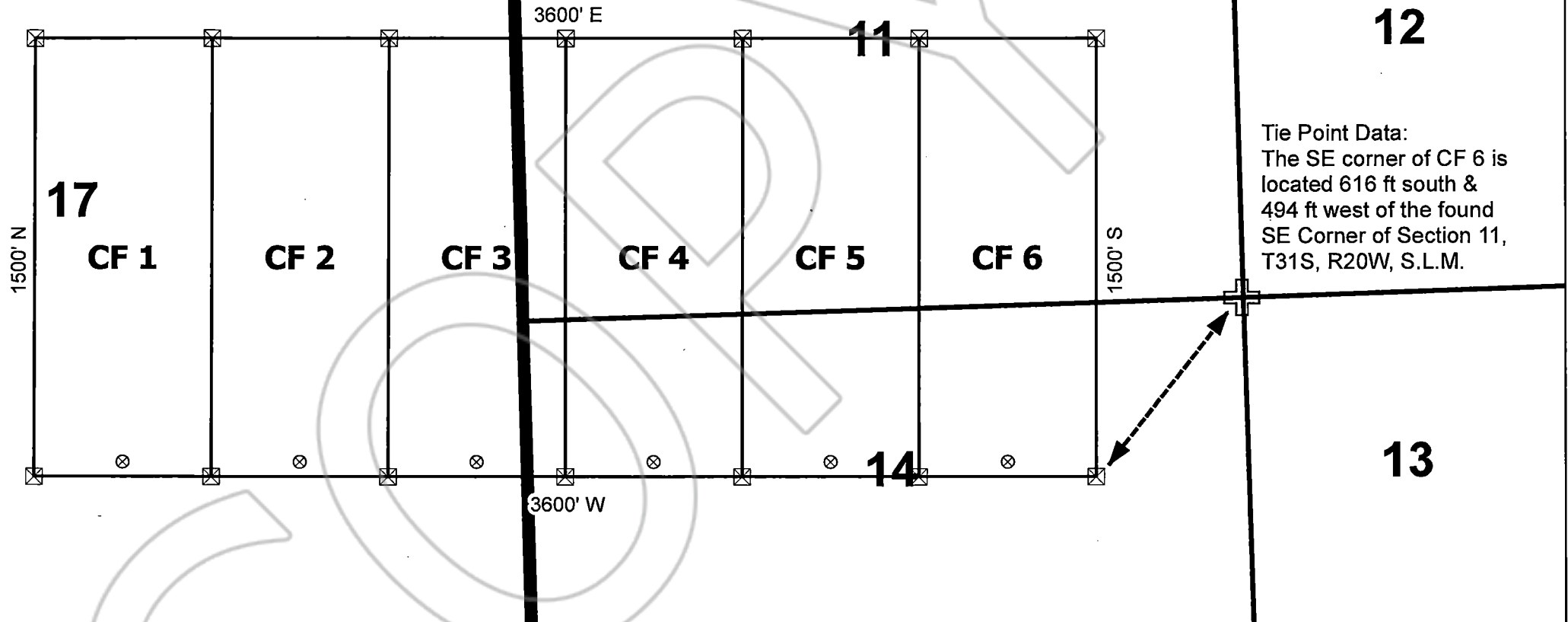




OFFICIAL RECORD
 AMY ELMER, RECORDER

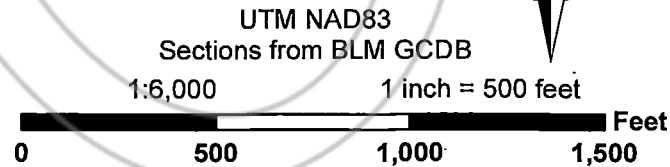
T 3 N, R 71 E, M.D.M.

T 31 S, R 20 W, S.L.M.



Notes:
 CF location monuments are set 50 feet from endline along centerline of claim.
 All location monuments are 2"x2"x4' wooden posts with scribed metal tags.
 All claims are 600' x 1500'.

Location Date:
 September 6, 2019: CF 1-6



**CF Unpatented
 Lode Mining Claims**

Township 3 North, Range 71 East, Sect. 17
 Mt. Diablo Base Line and Meridian
 Lincoln County, Nevada
 Township 31 South, Range 20 West, Sects. 11 & 14
 Salt Lake Base Line and Meridian
 Iron County, Utah

Locator:
 Nevada Select Royalty, Inc.
 P.O. Box 18127
 Reno, Nevada 89511