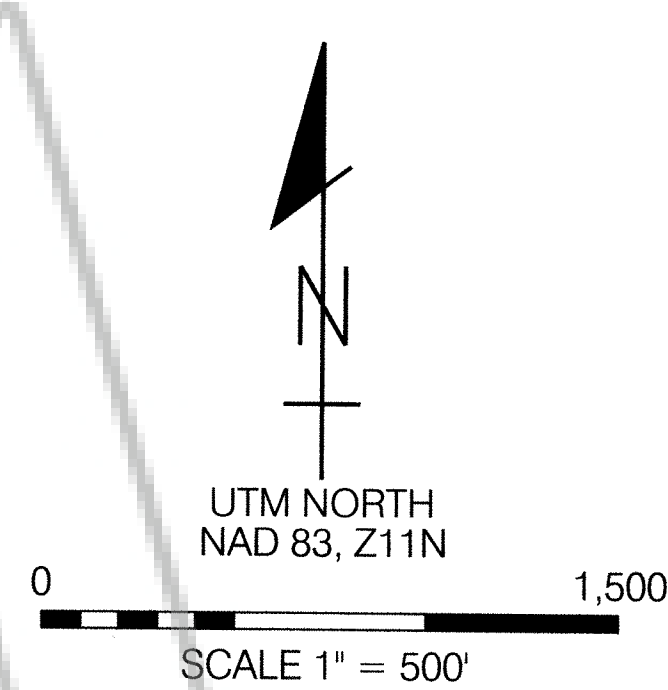
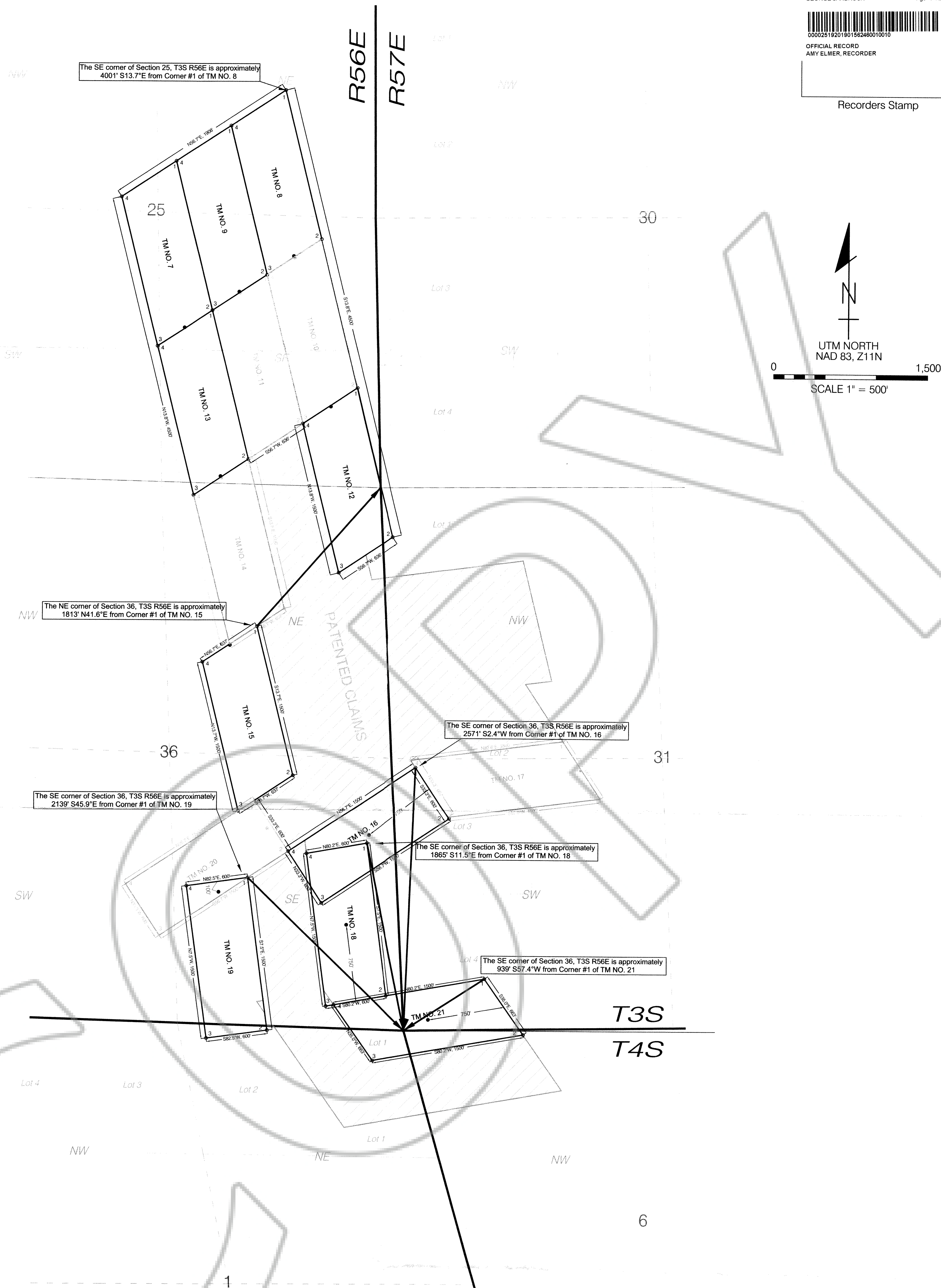




OFFICIAL RECORD
 AMY ELMER, RECORDER

Recorders Stamp



The SE corner of Section 25, T3S R56E is approximately 4001' S13.7°E from Corner #1 of TM NO. 8

The NE corner of Section 36, T3S R56E is approximately 1813' N41.6°E from Corner #1 of TM NO. 15

The SE corner of Section 36, T3S R56E is approximately 2139' S45.9°E from Corner #1 of TM NO. 19

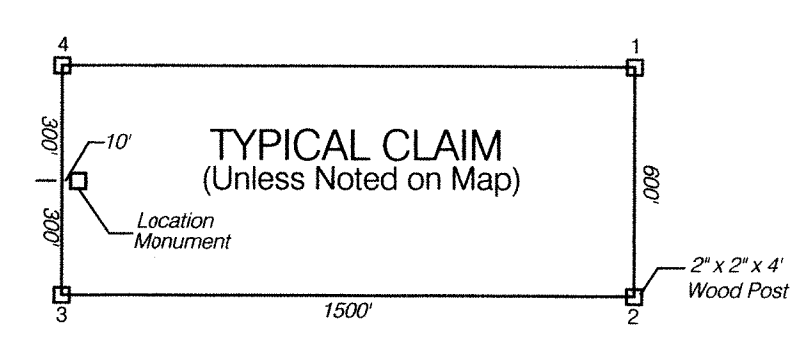
The SE corner of Section 36, T3S R56E is approximately 2571' S2.4°W from Corner #1 of TM NO. 16

The SE corner of Section 36, T3S R56E is approximately 1865' S11.5°E from Corner #1 of TM NO. 18

The SE corner of Section 36, T3S R56E is approximately 939' S57.4°W from Corner #1 of TM NO. 21

(Original Locator: Kingston Resources, Inc. - Quitclaimed to Nevada Minerals, Inc. April 9th, 2019.)
LIST OF UNPATENTED LODE MINING CLAIMS

NAME OF CLAIM	TYPE OF CLAIM	BLM SERIAL NO.	LINCOLN COUNTY DOC. NO.	DATE OF LOCATION	NOTE
TM NO. 7	LODE	NMC-1180208	2018-155318	October 7, 2018	
TM NO. 8	LODE	NMC-1180209	2018-155319	October 5, 2018	
TM NO. 9	LODE	NMC-1180210	2018-155320	October 5, 2018	
TM NO. 10	LODE	NMC-1180211	2018-155321	October 5, 2018	NOT AMENDED
TM NO. 11	LODE	NMC-1180212	2018-155322	October 5, 2018	NOT AMENDED
TM NO. 12	LODE	NMC-1180213	2018-155323	October 5, 2018	
TM NO. 13	LODE	NMC-1180214	2018-155324	October 5, 2018	
TM NO. 14	LODE	NMC-1180215	2018-155325	October 5, 2018	NOT AMENDED
TM NO. 15	LODE	NMC-1180216	2018-155326	October 5, 2018	
TM NO. 16	LODE	NMC-1180217	2018-155327	October 5, 2018	
TM NO. 17	LODE	NMC-1180218	2018-155328	October 5, 2018	NOT AMENDED
TM NO. 18	LODE	NMC-1180219	2018-155329	October 5, 2018	
TM NO. 19	LODE	NMC-1180220	2018-155330	October 5, 2018	
TM NO. 20	LODE	NMC-1180221	2018-155331	October 7, 2018	NOT AMENDED
TM NO. 21	LODE	NMC-1180214	2018-155332	October 5, 2018	



All monuments and corners are 2" X 2" X 4' wood posts with scribed aluminum tag

**AMENDED MAP OF THE
 TM LODE MINING CLAIMS**

TM NO. 7 thru 9; TM NO. 12 & 13;
 TM NO. 15 & 16; TM NO. 18 & 19; TP NO. 21
 Sec 25 and 36 TWP 3S, RGE 56E; Sec 1, TWP 4S, RGE 56E;
 Sec 31 TWP 3S, RGE 57E; Sec 6, TWP 4S, RGE 57E MDB&M

LINCOLN COUNTY
 NEVADA