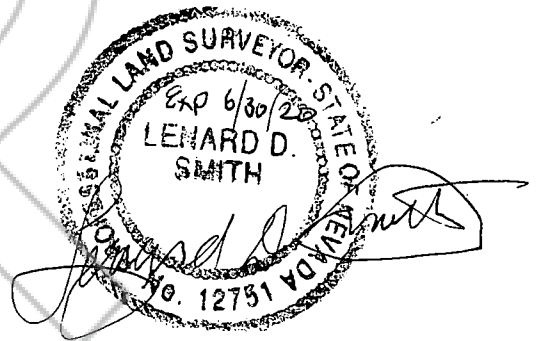
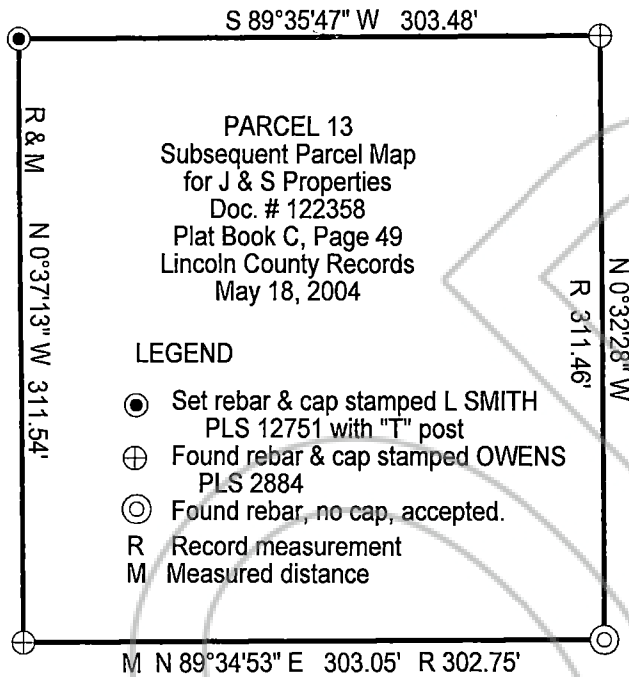


CORNER RECORD



OFFICIAL RECORD
 AMY ELMER, RECORDER

This corner record is to show the re-establishment of the northwest corner of Parcel 13 as shown for Karl & Debbe Komovic, Owners.



March 28, 2019

SURVEYORS CERTIFICATE

I, Lenard D. Smith, a Professional Land Surveyor registered in the State of Nevada, certify that:

1. This corner record represents the establishment or restoration of a corner or accessory to a corner conducted under my direct supervision.
2. The monument or accessories perpetuated lie within Section 1 N., R. 67 E., M.D.M. in Lincoln County, Nevada. The restoration was completed on March 27, 2019.
3. This corner record is recorded as required by NRS 329 and complies with the Nevada Administrative Code for Professional Land Surveyors for corner Records and any local ordinances in effect on the date that the restoration was completed.
4. The monument and accessories found are of the character shown, occupy the positions indicated and are of sufficient durability.