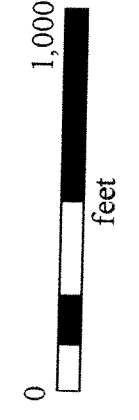
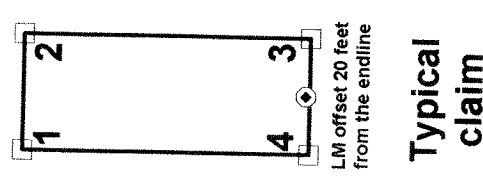


Map of the MARS-206 thru MARS-306, not inclusive, Lode Mining Claim Group
Located in portions of Sections 25 & 36, T4S, R55E and Sections 30 & 31, T4S, R56E
Don Dale Mining District
Lincoln County, Nevada

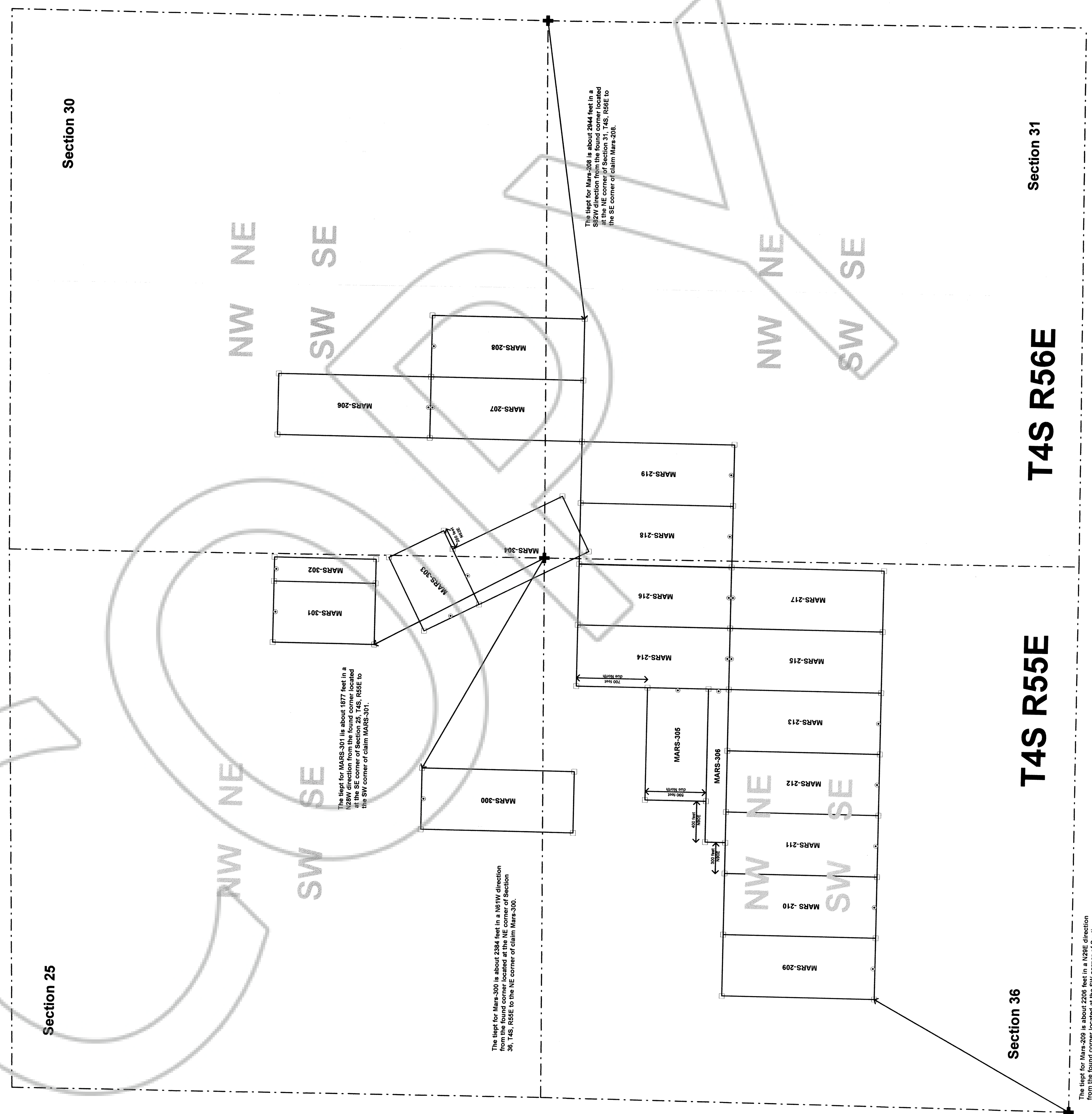
1 inch = 500 feet
NAD83/WGS84, Zone 11, MDB&M
Renaissance Exploration, Inc.
4750 Longley Lane, Suite 106
Reno, NV 89502

Section lines from PLSS
 Lincoln County, Nevada

Map of the MARS-206 thru MARS-219, and MARS-300 thru MARS-306 Lode Mining Claim Group
 MARS-206 thru MARS-213 were located on December 2, 2018 by David Freedman
 MARS-218 thru MARS-219 and MARS-300 thru MARS-304 were located on December 2, 2018 by Dan Pace
 MARS-214 thru MARS-217 and MARS-305 thru MARS-306 were located on December 3, 2018 by Dan Pace
 both David Freedman & Dan Pace are Agents for:
 Renaissance Exploration, Inc.
 4750 Longley Lane, Suite 106
 Reno, NV 89502



LINCOLN COUNTY, NV 2019-155905
 RENAISSANCE EXPLORATION, INC. 02/28/2018 11:27 AM
 00002146201801538402010019
 OFFICIAL RECORD
 AMY ELMER, RECORDER



All claims are 1500 feet North-South by 600 feet East-West, with a 20 foot offset from the end line except the following:
 MARS-301 is 1000 feet North-South by 600 feet East-West, 20 foot LM
 MARS-302 is 1000 feet North-South by 240 feet East-West, 20 foot LM
 MARS-303 is 800 feet in a N63E direction and 600 feet in a S27E direction, 20 foot LM
 MARS-304 is 1200 feet in a N27W direction and 600 feet in a N63E direction, 20 foot LM
 MARS-305 is 1100 feet East-West and 600 feet North-South, 20 foot LM
 MARS-306 is 1500 feet East-West and 200 feet North-South, 20 foot LM

- - - - Section line
- Claim corner 2" by 2" wooden post
- Location monument 2" by 2" wooden post. Typical claims have offset 20 feet from the claim end line and 300 feet from either side line. See exceptions listed above.
- + Found corner

The tiept for MARS-301 lies about 1877 feet in a N28W direction from the found corner located at the NE corner of Section 25, T4S, R55E to the SW corner of claim MARS-301.

The tiept for MARS-300 is about 2384 feet in a N61W direction from the found corner located at the NE corner of Section 30, T4S, R55E to the NE corner of claim MARS-300.

The tiept for MARS-208 is about 2844 feet in a S89W direction from the found corner located at the NE corner of Section 31, T4S, R56E to the SE corner of claim MARS-208.

The tiept for MARS-209 is about 2206 feet in a N28E direction from the found corner located at the SW corner of Section 36, T4S, R55E to the SW corner of claim MARS-209.