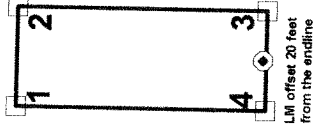


LINCOLN COUNTY, NV 2019-155883
 TRS 510.00 02/28/2019 11:27 AM
 RENAISSANCE EXPLORATION, INC. Pg:11 KE
 0002118201901558830101010

OFFICIAL RECORD
 ANY ELMER, RECORDER



Map of the MARS-200 thru MARS-205
 Lode Mining Claim Group
 Located on December 3, 2018
 by David Freedman
 Agent for:
 Renaissance Exploration, Inc.
 4750 Longley Lane, Suite 106
 Reno, NV 89502

Section lines from PLSS
 Lincoln County, Nevada

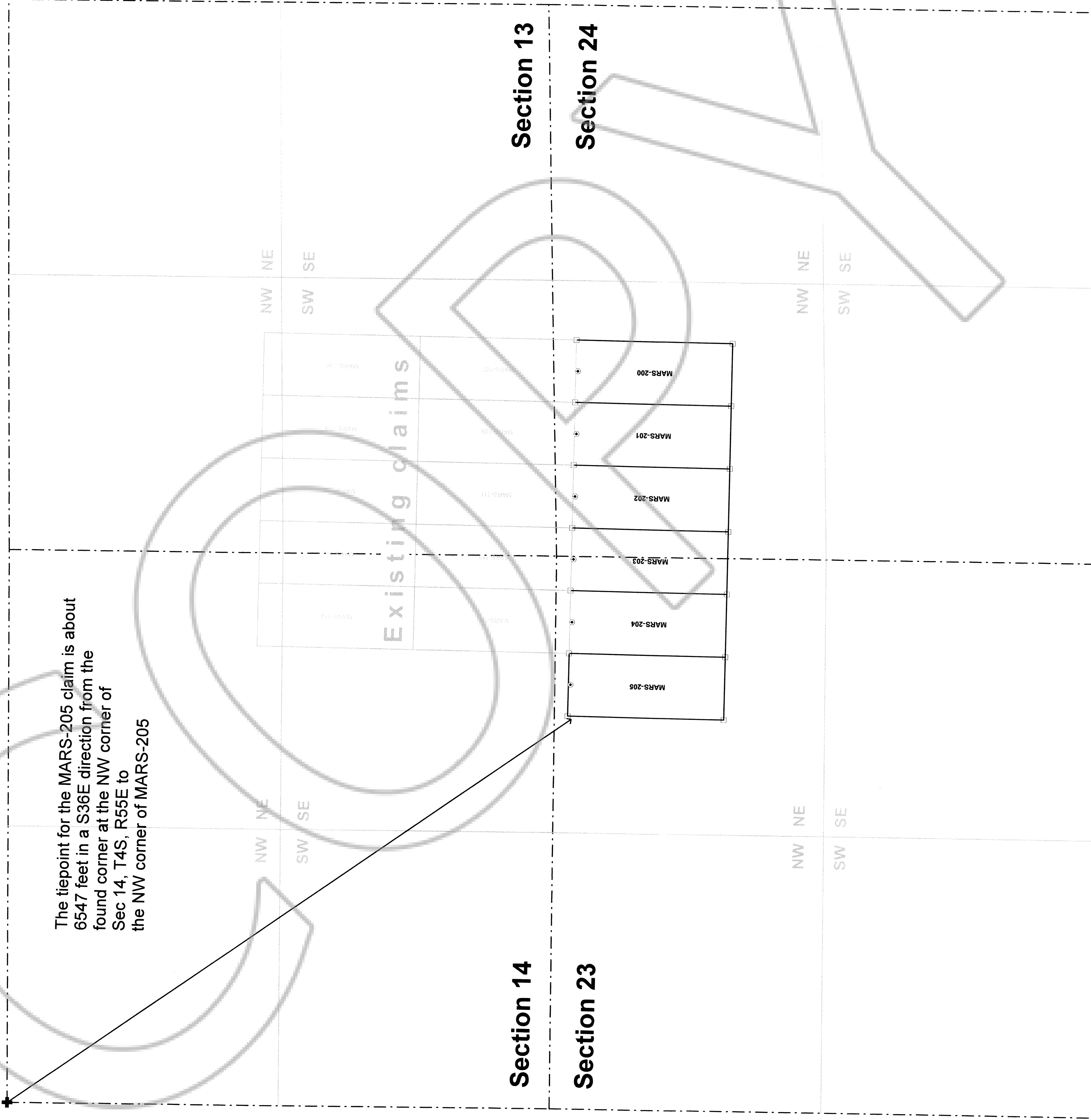
Map of the MARS-200 thru MARS-205
 Lode Mining Claim Group
 Located in portions of
 Sections 23 & 24, T4S, R55E
 Don Dale Mining District
 Lincoln County, Nevada
 1 inch = 500 feet
 NAD83/WGS84, Zone 11, MDB&M
 Renaissance Exploration, Inc.
 4750 Longley Lane, Suite 106
 Reno, NV 89502

All claims are 1500 feet North-South by
 600 feet East-West.

- Section line
- Claim corner 2" by 2" wooden post
- Location monument 2" by 2" wooden post.
Offset 20 feet from the claim end line and
300 feet from either side line.
- ⊕ Found corner at NW corner of
Section 14, T4S, R55E



The tiepoint for the MARS-205 claim is about
 6547 feet in a S36E direction from the
 found corner at the NW corner of
 Sec 14, T4S, R55E to
 the NW corner of MARS-205



T4S R55E