

12

7

13

18

The NW Corner of BR 61 bears S46°24'E and is 23,722' from the NW corner of Section 3 T3N R65E

Coordinates for NWC BR 61  
Datum: WGS 1984  
UTM Zone 11  
Units: Meters  
708,187. East  
4,220,834. North

T03N R65E

T03N R66E

BR 61	BR 63	BR 65
BR 62	BR 64	BR 65

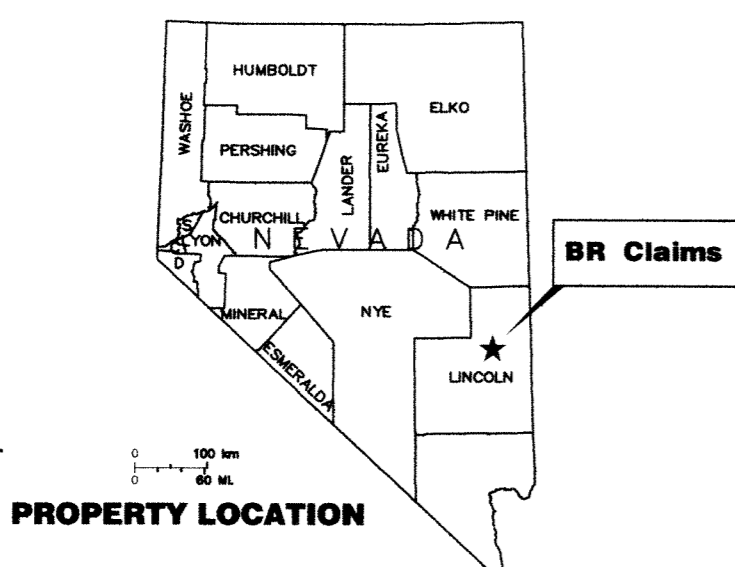
24

Note:  
Datum: WGS 1984  
Projection: UTM  
Units: Meters  
All Bearings are reported in UTM Grid North.  
All Degrees and Minutes are reported to the nearest minute.  
All Distances are reported in feet to the nearest foot.

The depicted Township, Range and Sections are a product of the Bureau of Land Management, Cadastral Survey. Commonly known as the PLSS, CadNSDI that originates from the BLM GCDB program.

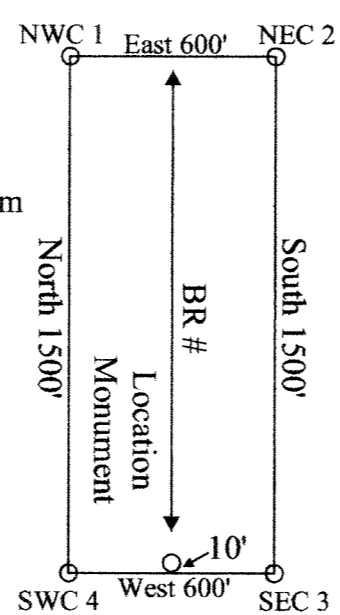
BR 61-65 lode claims were located on December 19, 2018 in Township 3 North, Range 66 East, Section 19 in Lincoln County, Nevada, MDB&M.

### Location Map for BR 61-65 Lode Claims Sheet 1 of 1

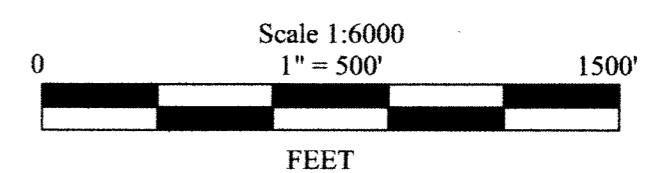


Locator:  
Silver One Resources (USA) Inc.  
305 Valparaiso Ct.  
Sparks, NV 89441

Typical Claim



Notes:  
Location Monuments are set 10' from claim end lines unless noted otherwise. All location and corner monuments are 2" X 2" X 4' wooden posts with scribed metal tags. All claims are 600' by 1500' unless noted otherwise.



Location Map for BR 61-65 Lode Claims Sheet 1 of 1
Silver One Resources (USA) Inc. 305 Valparaiso Ct. Sparks, NV 89441
BR 61-65 Claims N272118.dwg January 25, 2019 Drawn By: G.I.S. Land Services
Datum: WGS 1984 Projection: UTM Zone 11 Units: Meters

LINCOLN COUNTY, NV 2019-155800  
Rec \$85.00  
Total \$85.00  
SILVER ONE RESOURCES (USA) Pgs=1 AE



OFFICIAL RECORD  
AMY ELMER, RECORDER