

T1N, R67E, MDM  
PARTIAL CADASTRAL SURVEY RETRACEMENT DIAGRAM  
SCALE 1" = 5,000'

CADASTRAL RETRACEMENT GEODETIC CONTROL TABLE

NO.	LATITUDE	LONGITUDE	FOUND	CONSTRUCTED
1	37°58'56.34281"N	114°31'09.77498"W	Notched L-Sin, Mnd, TPst, SB	1.5DAM 2006 Per Manual
2	37°58'56.32858"N	114°30'38.43093"W	Limestone, mound	1.5DAM 2018 Per Manual
3	37°58'56.33863"N	114°30'05.27533"W	Limestone, mound	1.5DAM 2018 Per Manual
4	37°58'56.15990"N	114°28'59.00053"W	Mound Stone, Cedar, Hex Bolt	1.5DAT 2006 Per Manual
5	37°58'56.19377"N	114°24'35.87001"W	Notched Limestone, Mnd, TPst	1.5DAM 2006 Per Manual
6	37°57'11.92146"N	114°31'09.96238"W	Notched Limestone, Mound	1.5DAM 2018 Per Manual
7	37°57'10.93095"N	114°27'52.72024"W	No.5 Rbr, Mnd, Locally Acptd	1.5DAM 2018 Per Manual
8	37°57'11.14238"N	114°27'19.62548"W	No.3 Rebar, Small Mound, Locally Accepted	
9	37°57'11.34484"N	114°26'46.53036"W	ZDBM RLS 3644, 1981 concrete, can, mound, T-Post	
10	37°56'44.88917"N	114°26'46.16237"W	TDBM PLS 6498, "NEVADA" T-Post	
11	37°56'44.82089"N	114°27'52.70923"W	No.5 Rbr, Mnd, Lely Acptd	1.5DAM 2018 Per Manual
12	37°56'18.43546"N	114°26'45.79313"W	ZDBM PLS 3644, 1981, concrete, can, mound, T-Post	
13	37°56'18.49128"N	114°27'19.69657"W	ZDBM RLS 3644, 1981 concrete, mound.	
14	37°56'18.54342"N	114°27'52.69122"W	ZDBM PLS 3644, 1981 concrete, can, mound.	
15	37°56'18.88060"N	114°28'59.25948"W	Cedar Post, Mound	1.5DAM 2018 Per Manual
16	37°56'19.73234"N	114°31'09.80403"W	Notched L-Stone, Mound	1.5DAM 2018 Per Manual
17	37°55'25.73362"N	114°28'58.41259"W	3.25D BLM AM 1984	
18	37°55'25.93959"N	114°27'52.80230"W	3.25D BLM BM 2015	
19	37°54'36.05113"N	114°30'06.18304"W	3.25D BLM AM 1984	
20	37°53'43.71863"N	114°31'09.66474"W	Notched L-Sin, T-Post, SB	1.5DAM 2017 Per Manual
21	37°53'43.73368"N	114°24'36.18688"W	3.25D BLM BM Mound Stone, 1971	

**REFERENCES**

- Nevada Revised Statutes, Chapter 278, 327, 329, 625, and Nevada Administrative Code 625. 1866, 1870, 1872, & applicable 1977 Mining Laws.
- Merger & Resubdivision Parcel map, LC Doc. No. 128760.
- Corner Records for T1& 2N, R67E, and Exterior Township Filed as a result of T2N, R67E, adjacent Township retracement, Book 297, Pages 219-231.
- A TITLE REPORT WAS NOT PROVIDED TO THE SURVEYOR FOR THIS WORK; THEREFORE, THIS DOCUMENT CANNOT BE RELIED UPON FOR TITLE OR FRACTIONALIZATION OWNERSHIP DEFINITION.
- Patent definition source deeds: USMS 3567, 3725, 3864, 3870, 3886, 4008, 4072, 4132, 4160; USA Patent No. s: 161581, 221093, 245094, 244246, 282179, 382233, 339883, 399515, 504310, Resp.
- Original Cadastral Survey plat and field notes, approved May 1, 1873.
- Dependent Cadastral Resurvey plat and field notes, approved January 8, 1985.
- November 2018 acquired Mineral Survey Connection Sheets, S 17, T1N, R67E.

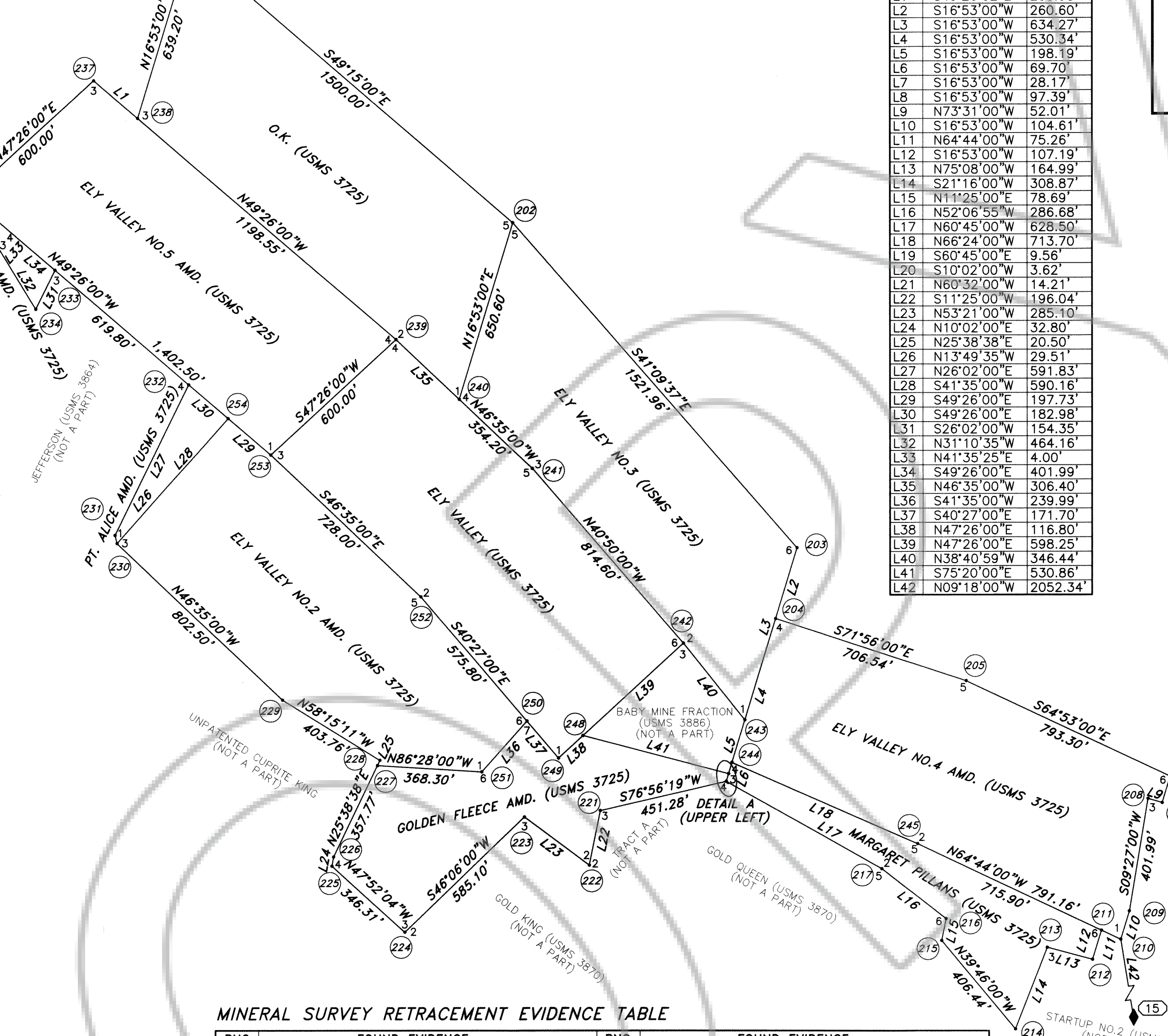
**NOTES & CAVEATS**

- Survey relegated to seniority definition due to multiple instances of individual claim overlap.
- Don Aschenbach, PLS, U.S. Mineral Surveyor and Retired BLM Cadastral Surveyor participated in the monumentation portion of this work.

**MONUMENT & MAP SYMOLOGY**

- Found or Set Section Corner, as noted.
- Found or Set Quarter Section Corner, as noted.
- Set 1.5" Diameter Aluminum Monument, stamped "PLS 9677 Artisan".
- Original, Amended, or Intersection Claim Corner Position; Set 1-post, & 2" Diameter Aluminum Monument, stamped "PLS 9677 Artisan" w/claim info.
- Township, Section, Protraction, Patented Claim Line, respectively.

PART OF SECTIONS 1, 4, 5, 6, 7, 9, 10, 11, 14, 15, 16, 17, 18, 19, 20, 21, 22, 23, 28, 29, 30, 31, AND, 36, T1N, R67E, MDM  
MINERAL PATENT RETRACEMENT & RESTORATION BY SENIORITY  
AND GEODETIC CONTROL DIAGRAM  
SCALE 1" = 300'



MINERAL SURVEY RETRACEMENT EVIDENCE TABLE

PNO.	FOUND EVIDENCE	PNO.	FOUND EVIDENCE
201	Two posts, circular tag, stone mound	228	Nothing found
202	One burned post, stone mound	229	Stone mound
203	One post, stone mound	230	One post, stone mound
204	One burned post, stone mound	231	Two posts, stone mound
205	One post, stone mound	232	One post, stone mound
206	One post, stone mound	233	Stone mound
207	Nothing found - Intersection point	234	Three posts, stone mound
208	Two posts, stone mound	235	One post, stone mound
209	Nothing found - Intersection point	236	One post, circular and square tag, stone mound
210	One post, stone mound	237	One post, stone mound
211	Two posts, stone mound	238	One post, circular tag, stone mound
212	One post, stone mound	239	One post, stone mound
213	One post, stone mound	240	Nothing found
214	Stone mound	241	One post, stone mound
215	Stone mound	242	One post, stone mound
216	One burned post, stone mound	243	One post, stone mound
217	One post, stone mound	244	Two posts, stone mound
218	Nothing found - Intersection point	245	One post, stone mound
219	Stone mound	246	One post, stone mound
220	Stone mound	247	Two posts, stone mound
221	One post, stone mound	248	One post, stone mound
222	One post, stone mound on outcropping	249	Two posts, circular tag, stone mound
223	One post, stone mound	250	Two posts, stone mound
224	Two posts, stone mound	251	Stone mound
225	Two posts, stone mound	252	One post, stone mound
226	Two posts, stone mound	253	Small stone mound - Near travelled road
227	Nothing found - Intersection point	254	One post, stone mound

**RECORDER'S NOTE**

Any subsequent changes to this map should be examined and may be determined by reference to the County Recorder's Cumulative Map Index. NRS 279.5695

**BASIS OF BEARINGS**

The basis of bearings hereon was established using the Pioche Coordinate System and Control established by Bulloch Brothers, Inc. No. 100051, wherein AS's "Base" of Latitude 37°56'12.4458"N, Longitude 114°27'15.18191"W, G. M. 5887.327" provided geodetic reference utilizing NAVSTAR & GLONASS Satellite GPS Systems and the National Geodetic Survey's NAD83 (GRS80), Datum 2010.00 (Epoch 2011) and CORS Station NVPI from the National Geodetic Survey at <http://www.ngs.noaa.gov/>. Ground coordinates are Bulloch Brothers using traversed "p" control and adding 500,000 in both north and east dimensions to keep values positive for future southerly surveys.

U.S. MINERAL SURVEY NO. 3725  
BY SENIORITY  
CADASTRAL, GEODETIC CONTROL  
RECORD OF SURVEY  
FOR  
PIOCHE-ELY VALLEY MINES, INC.

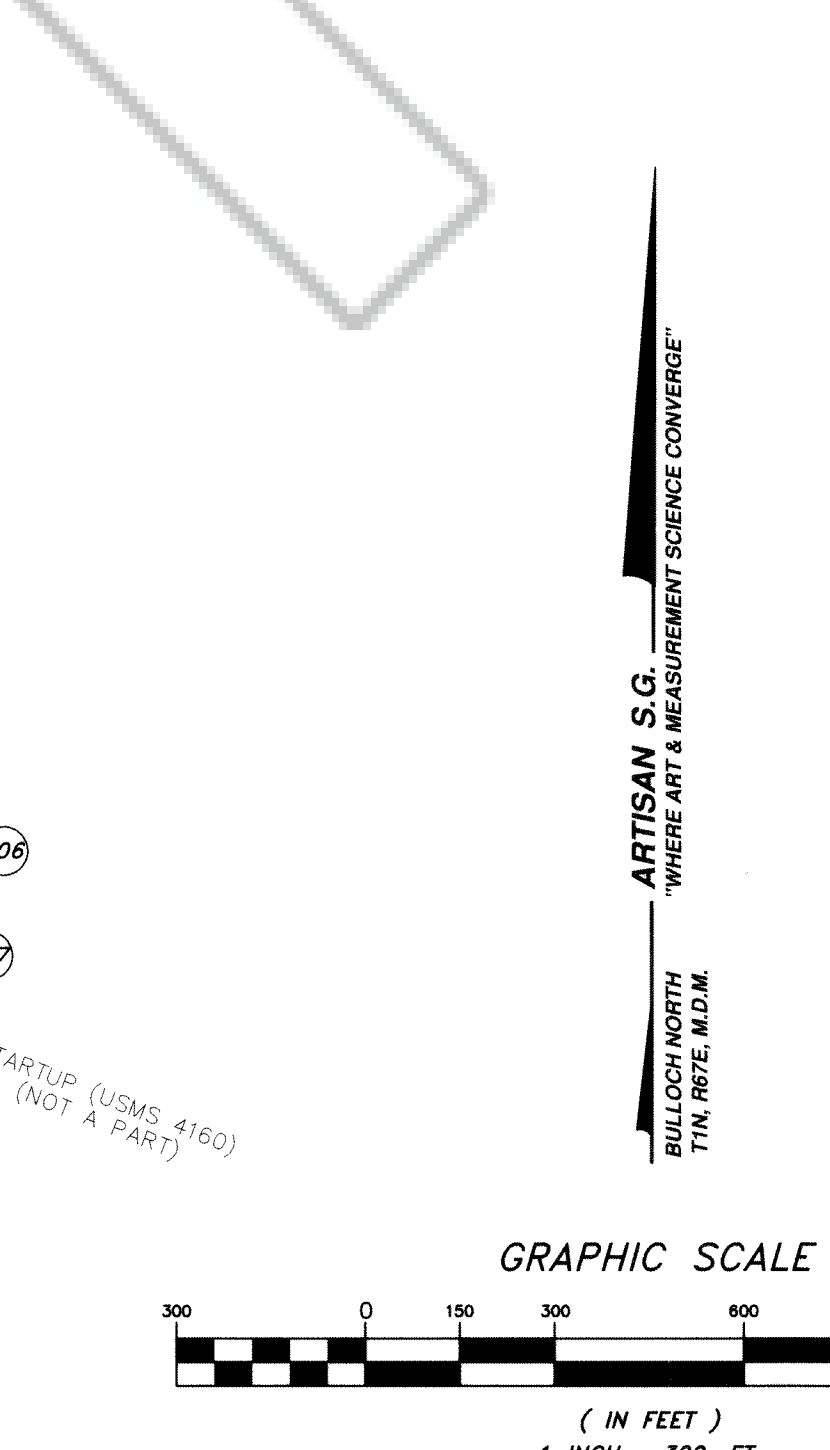
PORTIONS OF SECTIONS 8 & 17  
OF SHOWN PATENTED MINING CLAIMS  
TOWNSHIP 01 NORTH, RANGE 67 EAST

LINCOLN COUNTY, NV 2019-155741  
Rec:527.00  
Total:527.00  
ARTISAN LAND SURVEY 01/14/2019 03:28 PM  
Figs:1 AK

000010552019011557410010013  
OFFICIAL RECORD  
AMY ELMER, RECORDER

MINERAL PATENT LAND SURFACE AREA TABULATIONS BY SENIORITY

PATENT SURVEY NAME	AREA	DATE
Ely Valley	20.214±AC.	1901.11.05
Ely Valley No.3	18.398±AC.	1904.04.04
O.K.	20.099±AC.	1907.01.25
Ely Valley No.5 Amd.	19.180±AC.	1907.09.03
Margaret Pillans	5.925±AC.	1907.11.02
Golden Fleece Amd.	9.576±AC.	1908.10.08
Ely Valley No.2 Amd.	18.592±AC.	1908.10.08
Alice Amd.	2.077±AC.	1909.04.16
Ely Valley No.4 Amd.	19.731±AC.	1909.05.27
TOTAL	133.792±AC.	

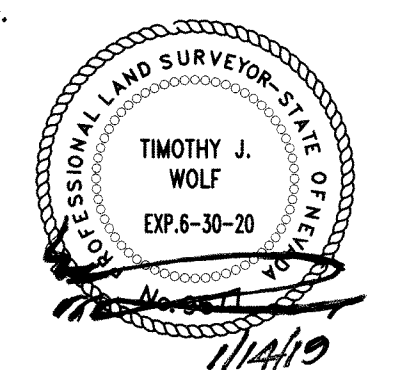


GEOSPATIAL SURVEYOR'S CERTIFICATE

I, Timothy J. Wolf, a Professional Land Surveyor, registered in the State of Nevada, acting as Agent for Artisan Surveying Group, a Nevada Limited Liability Company, do hereby certify that:

- This plat represents the results of a survey conducted at the direction of the undersigned, performed at the instance of Pioche-Ely Valley Mines, Inc., a Nevada Corporation, successor in interest by merger from Pioche Mines Consolidated, Inc., a Nevada Corporation, and, Ely Valley Mines, Inc., a Nevada Corporation.
- The lands surveyed are situate within Township 1 North, Range 67 East, Mount Diablo Meridian, Lincoln County, Nevada, United States of America and the field retracement portion to this survey was completed on October 30, 2018.
- This survey and map complies with applicable State Statutes and any Local Ordinances in effect as of the date of its completion.
- The monuments depicted in this survey are of the character shown, occupy the positions indicated, and are of sufficient durability.
- All surveying was conducted by, and positions derived with, use of GNSS Satellite Global Positioning System Static and RTK techniques employing precision calibrated U.S.A. National Geodetic Survey-approved Hixon Fixed-Height, 4-Strut Stabilized centering quad-pods.
- Terrain conditions vary from gentle sloping and open to convoluted, steep; light to heavy forested; mountainous to small foliage populated with heavy brush of varying type, including sparse to dense pinion, juniper, cedar, mohogany, pine and occasional spruce.
- Additional detail photos and evidence on-file.

TIMOTHY J. WOLF  
PROFESSIONAL LAND SURVEYOR  
NEVADA CERTIFICATE NO. 9677  
AGENT, ARTISAN SURVEYING GROUP



ARTISAN SURVEY GROUP, A NV LLC  
"WHERE ART & MEASUREMENT SCIENCE CONVERGE"  
P.O. BOX 396  
PIOCHE, NEVADA 89043-0396  
(775) 962-LAND (5263)

CONTRACT: PCH-ELY VLY MINE  
LOCATION: NW OF PIOCHE, NV  
NAME: PCH-ELY MN SHEET  
REV. DATE: 07/14/19  
DRAWN: P.R. WOLF  
REVIEWED: T.J.WOLF, PLS. QDRS  
H.SCALE: 1" = 300'  
V.SCALE: N/A