

SECTION 15, T1N, R67E, MDM  
LOCAL EVIDENCE RETRACEMENT  
AND GEODETIC CONTROL DIAGRAM  
SCALE 1" = 400'

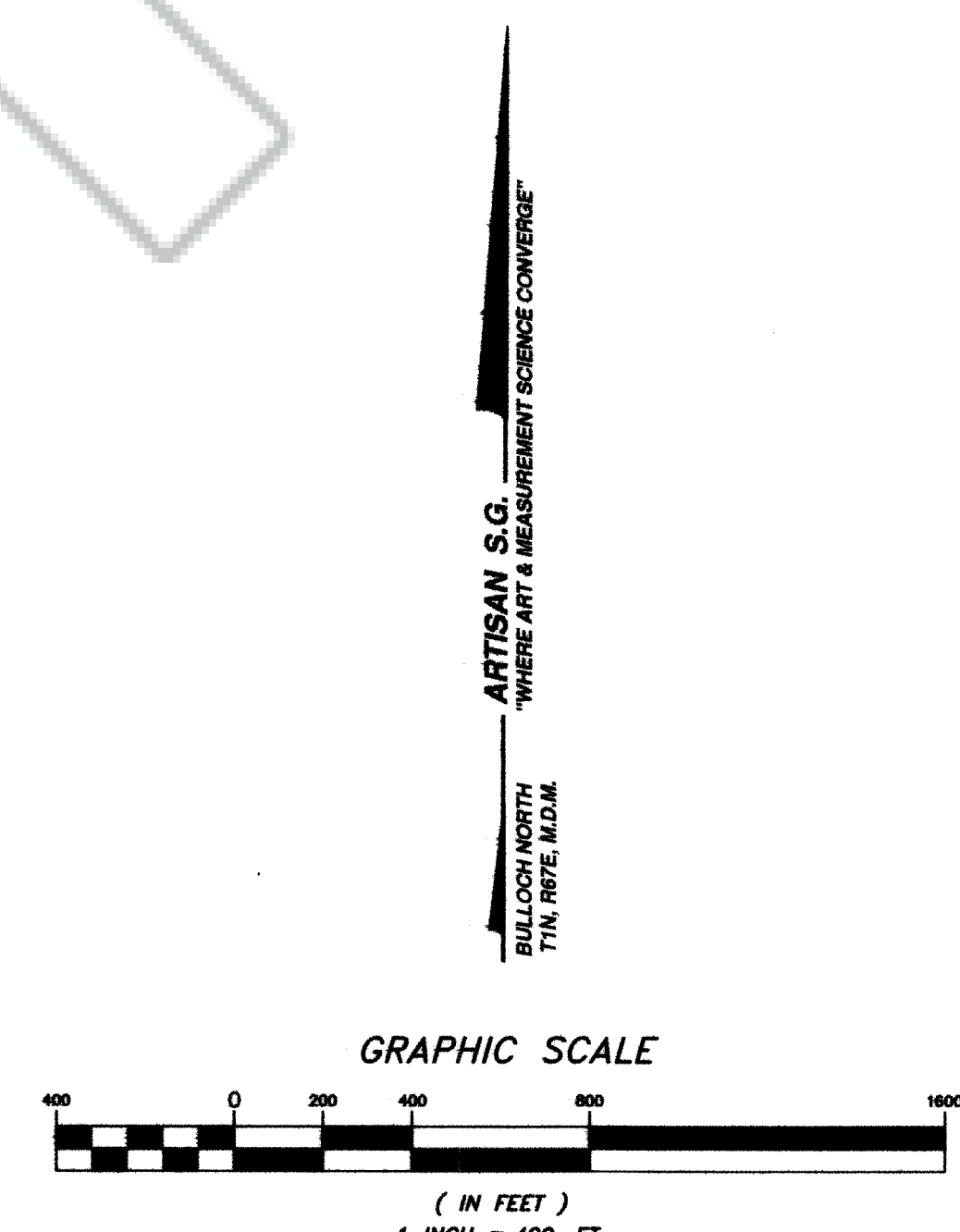
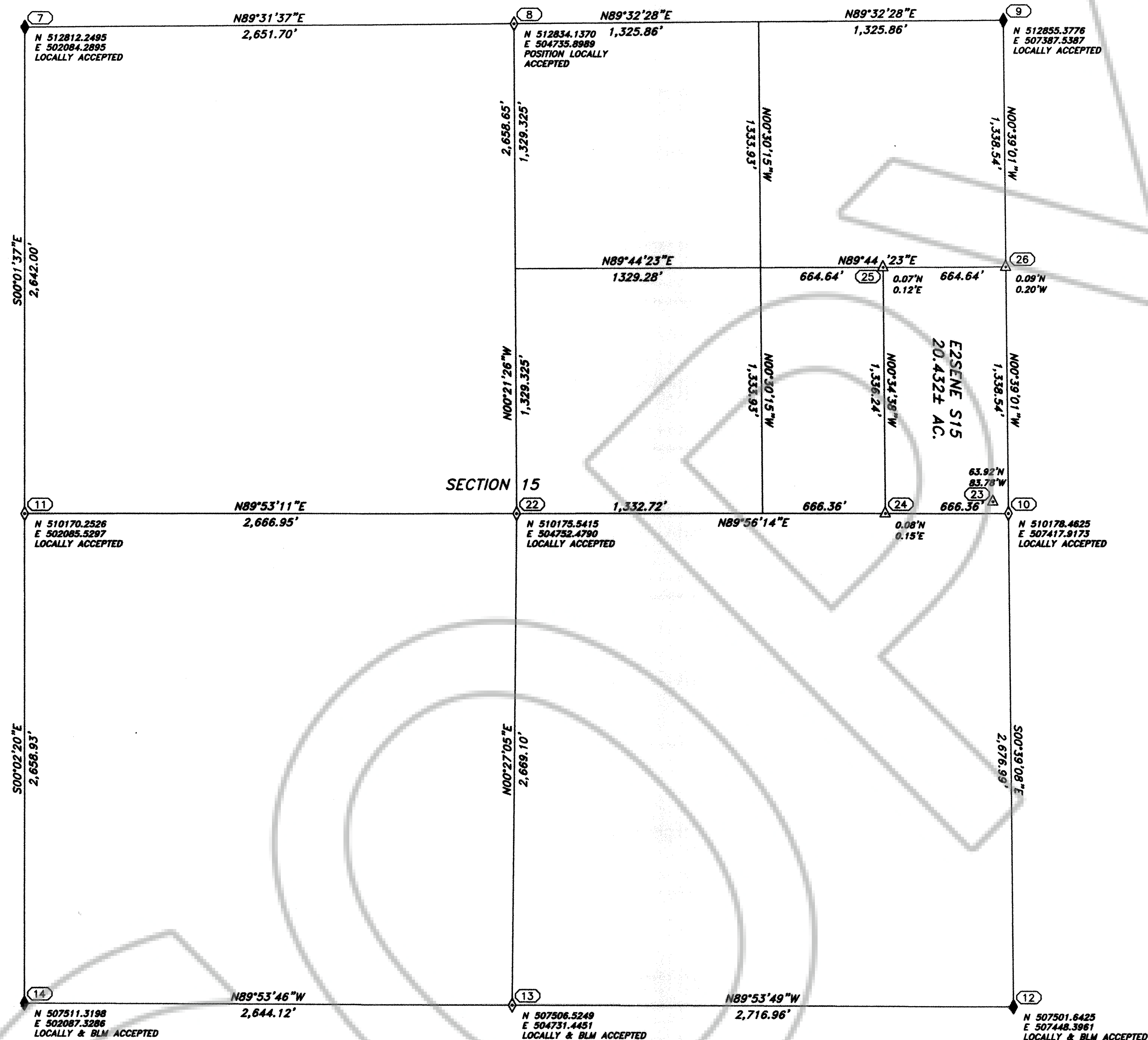
SECTION 15  
LOCAL EVIDENCE RETRACEMENT  
RECORD OF SURVEY  
FOR  
PIOCHE-ELY VALLEY MINES, INC.

LINCOLN COUNTY, NV 2019-155686  
Rec: \$27.00 01/04/2019 01:03 PM  
Total: \$27.00  
ARTISAN SURVEY GROUP PGS-1 AE



OFFICIAL RECORD  
LESLIE BOUCHER, RECORDER

TOWNSHIP 01 NORTH, RANGE 67 EAST



**GEOSPATIAL SURVEYOR'S CERTIFICATE**  
I, Timothy J. Wolf, a Professional Land Surveyor, registered in the State of Nevada, acting as Agent for Artisan Surveying Group, a Nevada Limited Liability Company, do hereby certify that:

- This plat represents the results of a survey conducted at the direction of the undersigned, performed at the instance of Pioche-Ely Valley Mines, Inc., a Nevada Corporation, successor in interest by merger from Pioche Mines Consolidated, Inc., a Nevada Corporation, and, Ely Valley Mines, Inc., a Nevada Corporation.
- The lands surveyed are situated within Section 15, Township 1 North, Range 67 East, Mount Diablo Meridian, Lincoln County, Nevada, United States of America, and the field retracement portion of this survey was completed on October 30, 2018.
- This survey and map complies with applicable State Statutes and any Local Ordinances in effect as of the date of its completion.
- The monuments depicted within this survey are of the character shown, occupy the positions indicated, and are of sufficient durability.
- All surveying was conducted by, and positions derived with, use of GNSS Satellite Global Positioning System Static and RTK techniques employing precision calibrated, U.S.A. National Geodetic Survey-approved Hixson Fixed-Height, 3-Strut Stabilized quad-pods.
- Terrain conditions surround gentle sloping and open grasslands, significant civil improvement of utilities, roads, trails, and buildings. General foliage populated with light brush of varying type, including dendrologic species of sparse pinon, juniper, cedar, and occasional spruce. Area and former original 1873-era cadastral monumentation has been subjected to loss, fire consumption and other obliteration-related damage.

**CADASTRAL RETRACEMENT GEODETIC CONTROL TABLE**

NO.	LATITUDE	LONGITUDE	FOUND	CONSTRUCTED
7	37°57'10.93095\"N	114°27'52.72024\"W	No.5 Rbr, Mnd, Locally Acptd	1.5DAM 2018 Per Manual
8	37°57'11.14238\"N	114°27'19.62548\"W	No.3 Rebar, Small Mound, Locally Accepted	
9	37°57'11.34484\"N	114°26'46.53036\"W	20BM RLS 3644, 1981 concrete, can, mound, T-Post	
10	37°56'44.88917\"N	114°26'46.16237\"W	1DPM PLS 6498, \"NEVADA\" T-Post	
11	37°56'44.82089\"N	114°27'52.70923\"W	No.5 Rbr, Mnd, Locally Acptd	1.5DAM 2018 Per Manual
12	37°56'18.43546\"N	114°26'45.79313\"W	20BM PLS 3644, 1981, concrete, can, mound, T-Post	
13	37°56'18.49128\"N	114°27'19.69657\"W	20BM RLS 3644, 1981 concrete, mound.	
14	37°56'18.54342\"N	114°27'52.69122\"W	20BM PLS 3644, 1981 concrete, can, mound.	
22	37°56'44.86830\"N	114°27'19.42634\"W	20BM PLS 3644, 1981 concrete, can, mound.	
23	37°56'45.52167\"N	114°26'47.20769\"W	3.25DBM PLS 12751, 2004, CMU brick, T-Post	
24	37°56'44.88536\"N	114°26'54.47651\"W	1DPM PLS 6498, T-Post	
25	37°56'58.09024\"N	114°26'54.63973\"W	1DPM PLS 6498, T-Post	
26	37°56'58.11817\"N	114°26'46.34889\"W	1DPM PLS 6498, T-Post	

**REFERENCES**

- Nevada Revised Statutes, Chapter 278, 327, 329, 625, and, Nevada administrative Code 625.
- A Title Report was not provided to the Surveyor for this work; therefore, this document cannot be relied upon for Title, Ownership, or Ownership Fractionalization definition.
- Recorded Documents Reviewed, Doc. No.'s:  
Parcel Maps: 71481, 77097, 79512, 79514, 79626, 80453, 82153, 82359, 82862, 85238, 87234, 101188, 101319, 101568, 101569, 101907, 102089, 102096, 102764, 104220, 105108, 105717, 108397, 109139, 109140, 109505, 109749, 109750, 110152, 110153, 110134, 110135, 110137, 110928, 111311, 111650, 111651, 112674, 112675, 116803, 121498, 125984, 126084, 126354, 127310, 129660, 144749, 152189.  
Record of Surveys: 75592, 96734, 100051, 101189, 109730, 115298, 122295, 123211, 126099, 128616, 141167.
- Original Cadastral Survey plat and field notes approved May 1, 1873; Dependent Cadastral Resurvey plat and field notes approved January 8, 1985.

**MONUMENT & MAP SYMBOLOGY**

- Found or Rehabilitated Section Corner, as noted.
- Found or Rehabilitated Quarter Section Corner, as noted.
- Found 1\" diameter Plastic Monument as noted.
- Section, Center Section, Sub-Section Line, respectively.

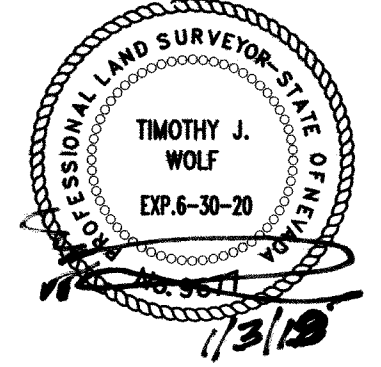
**RECORDER'S NOTE**

Any subsequent changes to this map should be examined and may be determined by reference to the County Recorder's Cumulative Map Index. NRS 279.5695

**BASIS OF BEARINGS**

The basis of bearings hereon was established using the Pioche Coordinate System and Control established by Bulloch Brothers, Doc. No. 100051, wherein ASG's \"PBase\" at Latitude 37°56'12.44658\"N, Longitude 114°27'15.18191\"W, El. H. 5897.327' provided geodetic reference utilizing NAVSTAR & GLONASS Satellite GPS Systems and the National Geodetic Survey's NAD83 (GRS80), Datum 2010.00 (Epoch 2011) and CORS Station NVPI from the National Geodetic Survey at <http://www.ngs.noaa.gov/> Ground coordinates are Bulloch Brothers using traversed \"P\" control and adding 500,000 in both north and east dimensions to keep values positive for future southerly surveys.

TIMOTHY J. WOLF  
PROFESSIONAL LAND SURVEYOR  
NEVADA CERTIFICATE NO. 9677  
AGENT, ARTISAN SURVEYING GROUP



**Art** ARTISAN SURVEY GROUP, A NV LLC  
\"WHERE ART & MEASUREMENT SCIENCE CONVERGE\"  
P.O. BOX 396  
PIOCHE, NEVADA 89043-0396  
(775) 962-LAND (5263)

CONTRACT: PCH-ELY VLY MINE  
LOCATION: NW OF PIOCHE, NV  
NAME: PCH-ELY MN SHEET  
REV. DATE: 12/5/18  
DRAWN: P.R. WOLF, IL  
REVIEWED: T.J. WOLF, PLS, GDS  
H.SCALE: 1\" = 400'  
V.SCALE: N/A

1 of 1 SHEETS