

CERTIFICATE OF AMENDMENT

December 11, 2018

Cory Lytle, Director
Lincoln County Planning and Building
181 Main St., P.O. Box 329
Pioche, NV 89043



OFFICIAL RECORD
LESLIE BOUCHER, RECORDER

Record of Survey, Lincoln County Doc No.146538
Book D, Page 143, Pt. Section 2 & 11, T3S, R67E, M.D.M.

During the course of mapping this survey, two complications, one omission, and one errant decimal resulted in what are dimensional mapping ambiguities, and final area. The first relates to silence on the type of apportionment to be applied by decree omitted in the cited railroad Quiet Title. The second relates to the acceptance of Lenard Smiths' corner for the C-S 1/16th leaving a theoretical south sixteenth line and an accepted sixteenth line merely 0.37' from each other at a mapping scale of 1" = 300' wherein the wrong line became annotated on the final map. The third relates to West 16th line bearing that although can be calculated using the Cadastral Diagram, should be listed because it's contains a property line. The fourth removes an errant number in north line of the Cadastral Diagram, wherein the fifth deals with resultant area.

Amendment 1: Through legal counsel the prolongation method of apportionment was applied to the railroad wherein the centerline of the railroad bed distance which currently reads 1,189.27' is hereby amended to **1,233.29'**.

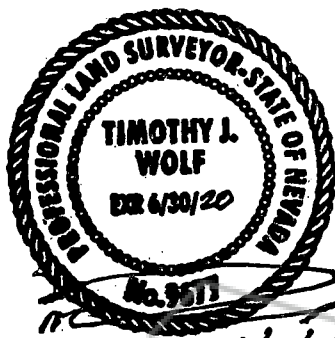
Amendment 2: The ROS-noted as accepted south sixteenth corner and line amends the following; all bearings west of the C-S 1/16th Smith Corner listed as N 89° 31' 00" E is hereby amended to **N 89° 30' 35" E**. One distance of 101.27' is amended to 101.28'. The bearing east of the ROS-noted as accepted C-S 1/16th Smith Corner is as listed on map, but one distance of 382.00' is amended to **381.98'**.

Amendment 3: The West Sixteenth Line, including the property line length listed as 207.81' is **S 00° 02' 36" E**.

Amendment 4: The east portion of the north line of Section 2 on the Cadastral Diagram listed at 26678.30' is hereby amended to **2,667.31'**.

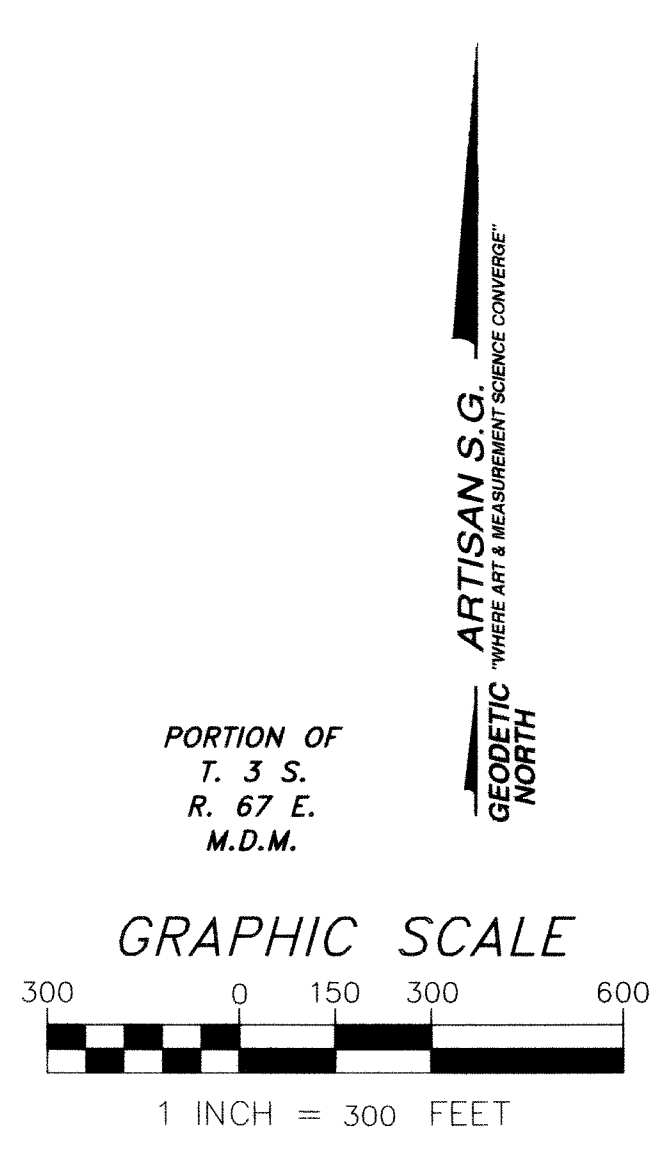
Amendment 5: The changes above impact the area wherein as calculated by computer determination methods the square footage listed as 6,642,296.24 is hereby amended to **6,642,293.10** and the mathematically equivalent acreage listed as 152.502+/- is amended to **152.501+/-**.

Timothy J. Wolf
Professional Land Surveyor
Nevada License No. 9677
Agent, Artisan Surveying Group, a NV LLC



12/4/18

COPY



MONUMENTATION & RELATED MAP SYMBOLS

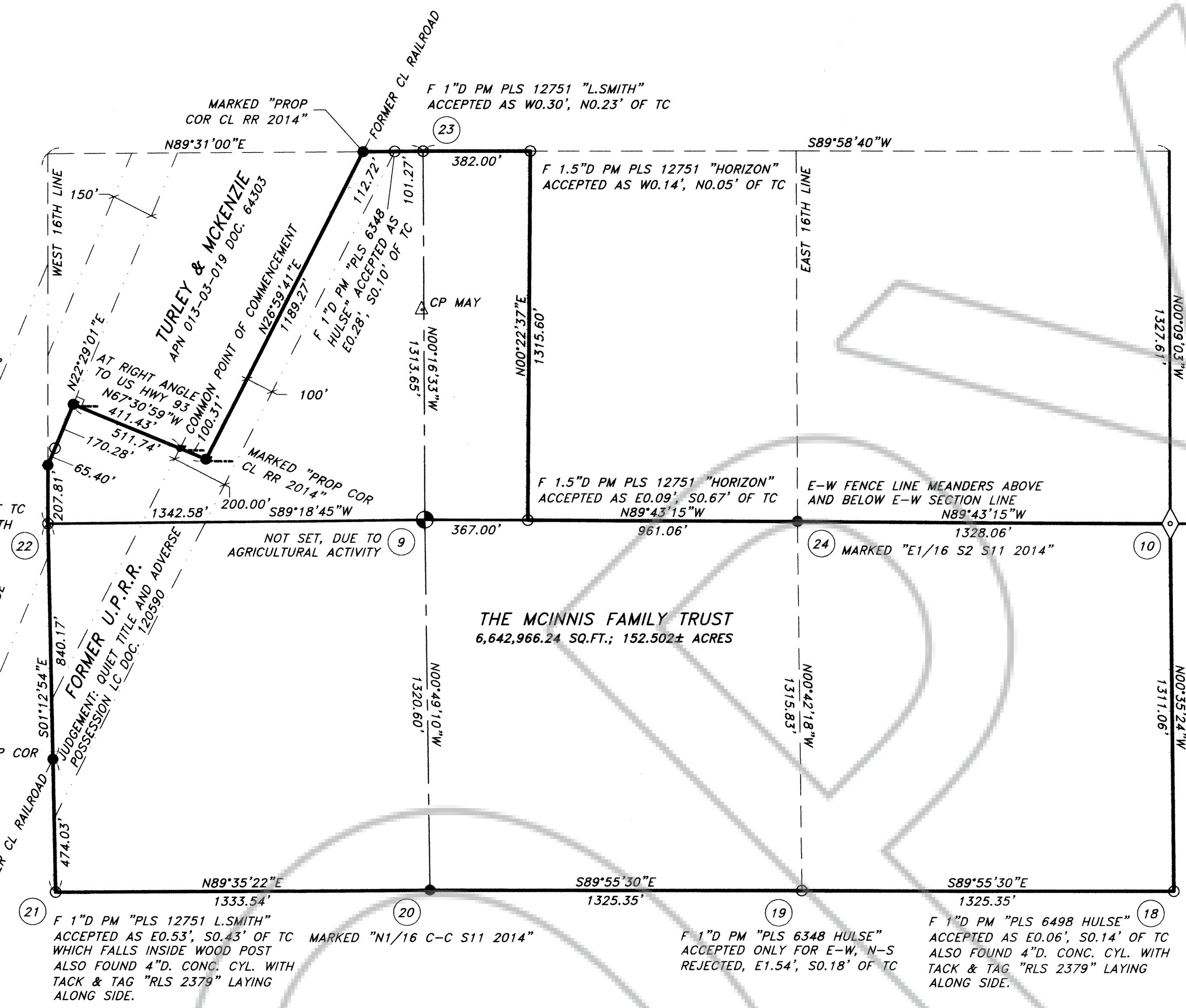
- ◊ FOUND SECTION CORNER, OR ACCESSORY AS NOTED
- ◆ FOUND 1/4 SECTION CORNER, OR ACCESSORY AS NOTED
- △ SET GEODETIC CONTROL POINT, AS NOTED
- ⊕ POSITION CALCULATED BY APPROPRIATE FEDERAL METHOD
- SET 1.5"D. AM ARTISAN PLS 9677 MONUMENT, AS NOTED
- FOUND MONUMENT, AS NOTED

REFERENCES

1. NEVADA REVISED STATUTES 240, 278, 327, 329, 533, 625 (ALSO NAC, AS APPLICABLE).
2. VARIOUS SUBDIVISION OF SECTIONS FIELD NOTES AND PLAT FOR TOWNSHIP 3 SOUTH, RANGE 67 EAST, APPROVED BY U.S. SURVEYOR GENERAL NEVADA, AND BLM CADASTRAL CHIEF.
3. TITLE REPORT NO. 01415-13145 PREPARED BY STEWART TITLE COMPANY, 810 IDAHO STREET, ELKO NEVADA 89801 DATED AS OF JUNE 16, 2014 AT 7:30 AM, CHERI MORRIS, TITLE OFFICER. SAID DOCUMENT ALSO INCLUDES COPIES OF ALL DOCUMENTS CITED UNDER SAID TITLE REPORT.
4. LINCOLN COUNTY DISTRICT COURT, RECORDS ON FILE ASSOCIATED WITH CASE NO. 53 11 2000LC.

NOTES

1. THE POSITION FOR THE QUARTER CORNER COMMON TO SECTIONS 2 AND 11 WAS RESTORED USING A GRANT-BOUNDARY METHOD TO PROTECT THE DEFLECTION NOTED ON THE OFFICIAL PLAT.
2. THE WEST QUARTER CORNER FOR SECTION 11 IS PERPETUATED BY THE LOCATION OF TWO INTERMEDIATE CONTROLLING CORNERS ESTABLISHED AT ONE CHAIN FROM EACH OF TWO BLM REFERENCE MONUMENTS, THE RESULTANT DISTANCES OF WHICH CONFIRM USE.
3. THE TRUE CORNER FOR SECTIONS 1, 2, 11, 12 WAS NOT SET BY THE BUREAU OF LAND MANAGEMENT. BLM ESTABLISHED A WITNESS CORNER 1.1 CHAINS EASTERLY OF THE TRUE CORNER, BY RULE ALONG THE RUNNING LINE. SAID WITNESS CORNER WAS RECOVERED IN THIS SURVEY AND IS USED IN ACCORDANCE WITH THE MANNER STIPULATED BY METHOD AS DEFINED BY SEQUENCE WITHIN THE RUNNING LINE FIELD NOTES. SAID POSITION IS ALSO NOT SET HEREIN DUE TO DELIMITING FEATURES CITED BY BLM CADASTRAL SURVEYOR CONCERNING THE LOCATION OF A DEEP SEDIMENTARY WASH WHEREIN STORM FLOWS CONSISTENTLY CARRY AND CONTINUE TO ERODE MATERIAL DOWNSTREAM.
4. THE CENTERLINE RAILROAD (NON-MONUMENTED AND TRACKS REMOVED) WAS ESTABLISHED BY THE MEASUREMENT OF THE PHYSICAL CENTER OF THREE WOODEN TRESTLES, EACH AGREEING WITHIN LESS THAN ONE TENTH FOOT WHEREIN SAID ALIGNMENT ALSO FAVORABLY CHECKED AGAINST REMAINING RAILROAD FENCELINES. JUDGEMENT FILED IN DOC. 120590 AND CASE FILE CONTAINED NO DEFINITION MAP. GEOMETRY UTILIZES A REVERSE DONATION METHOD OF EQUITY IN STRICT CONFORMITY WITH THE MCINNIS DECREEED JUDICIAL ORDER: "Together with the real property located within or between Parcels One and Two for which an easement or right-of-way for the purpose of constructing, repairing and maintaining a railroad or railway is dedicated, granted, used or abandoned."
5. THE NEVADA DEPARTMENT OF TRANSPORTATION MINIMIZED CADASTRAL RETRACEMENT DURING THE MONUMENTATION OF IMPROVEMENTS UNDER 1937 PROJECT ENTITLED NEVADA LINCOLN COUNTY ROUTE 7: SECTION C: F.A.P.85, AS INDICATED ON SHEET 7 OF 12. THE WESTERLY N-S SIXTEENTH LINE OF SECTIONS 2 AND 11 WAS NOT LOCATED BY SURVEY, BUT BY SCALING FROM AN UNMENTIONED SOURCE. AS A RESULT, NDOT CONSTRUCTION MONUMENTED THAT SCALED LINE, INCORRECTLY DEMARCATING A RIGHT OF WAY WIDTH CHANGE FROM 150 TO 400-FEET. THE RESULT OF THAT OMISSION PRECIPITATED IN THE CONSTRUCTION OF A LINE OF 6"SO. CONCRETE & BRASS PLUG RIGHT OF WAY MONUMENTS POSITIONED TOO FAR EAST ENCRANCHING ONTO PRIVATE LANDS IN AN AREA NOT GRANTED RIGHT OF WAY, NOR CO-OCCUPIED WITH IMPROVEMENTS AND THEREFORE NOT SUBJECT TO DESCRIPTION. THE OMISSION SUBSEQUENTLY RESULTED IN THE ERRONEOUS ERECTION OF A PRIVATE FENCE WALL ALONG A THEORETICAL SIXTEENTH LINE THEREBY DELIMITING FULL USE OF VESTED LANDS. THIS SURVEY AND THE RESULTING GEOMETRY CORRECTS THAT CONDITION IGNORING NDOT MONUMENTS.
6. A LATENT AMBIGUITY EXISTS WITHIN THE GEOMETRIC CALLS OF PARAGRAPH 2 OF DEED, DOC. 121956, AS CONCERNS ABILITY TO MATHEMATICALLY CLOSE. EQUITABLE RESOLUTION OF GEOMETRIC CLOSURE BEST MANIFESTED IN OBSERVATION OF ADJACENT PROPERTY COMPARING TO STATE & U.S. PATENT CONVEYANCES CONTAINED WITHIN THE HEREIN CITED TITLE REPORT WITH SPECIAL COMPARISON AND CONSIDERATION TO THE ADJACENT VESTING DEED FOR APN 01303019. SAID DEED, A.K.A. DOC. 64303, IS A SEVENTH JUDICIAL COURT, DECREE OF DISTRIBUTION, DTD. MAY 24 1979. SAID ORDER DICTATES VESTING TO MARILYN TURLEY (ANDERSON) AND JOHN G. MCKENZIE CITING ASSETS AND LAND DESCRIPTION. SAID DEED ORDERS THE SOUTH LINE OF WHAT IS NOW 01303019 TO BE "AT RIGHT ANGLES" WEST TO US HIGHWAY 93" FROM THE POINT OF COMMENCEMENT; SAME ALSO MCINNIS' POINT OF TERMINUS. IN THE ABSENCE AND RECOGNITION OF NO OTHER EVIDENCE TO THE CONTRARY, SAID LINE ASCRIBED TO BE IN COMMON WITH MCINNIS.



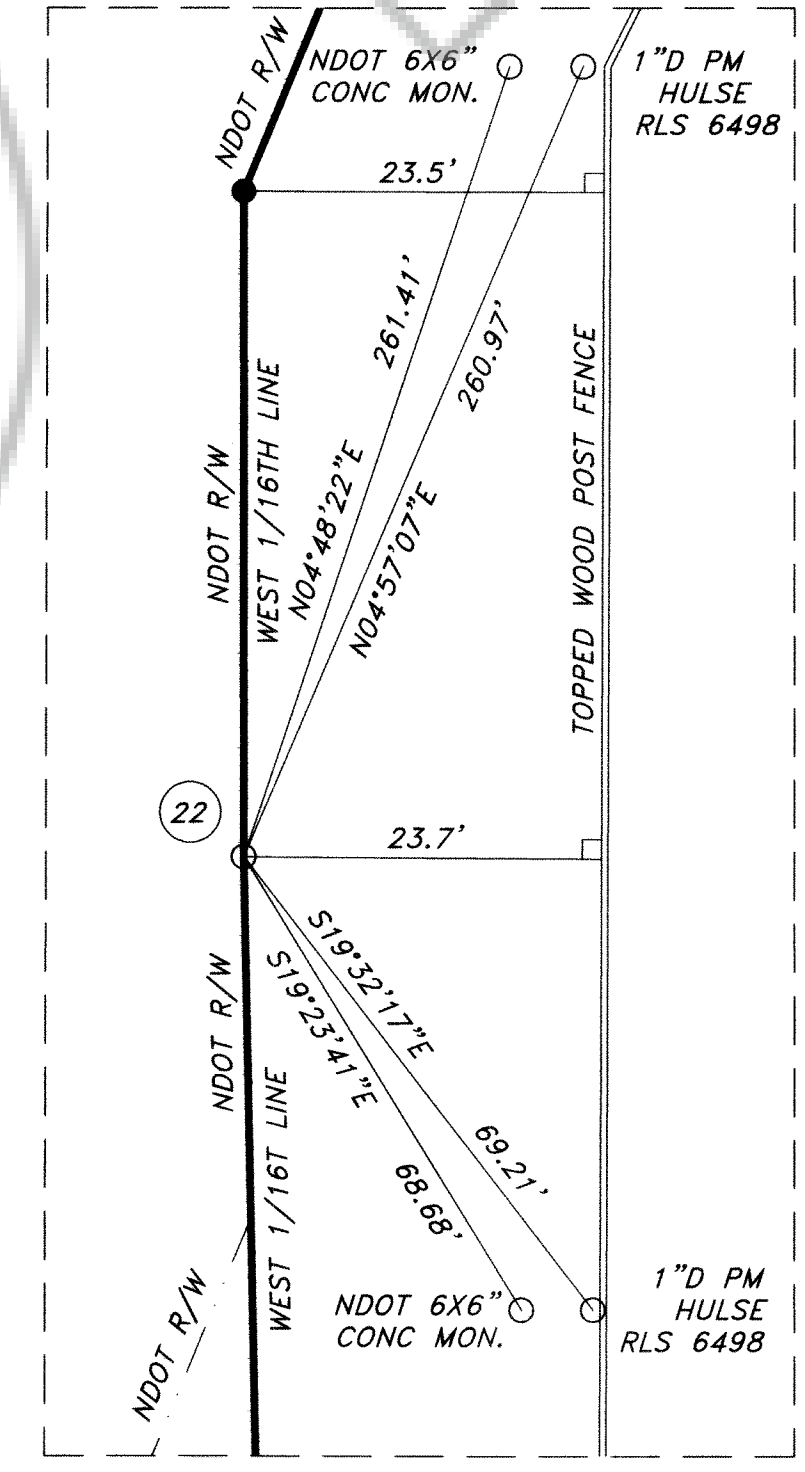
GEOGRAPHIC COORDINATES - CADASTRAL & CONTROL MONUMENTATION FOUND, SET OR CALCULATED PLSS CORNERS AS SHOWN HEREON

NO.	LATITUDE	LONGITUDE	EL. HGT.	DESCRIPTION
1.	37°43'22.60375\"N	114°27'46.56770\"W	4649.88	FOUND 3.5\"D BLM BM 35/36/2/1 1971
2.	37°43'22.88367\"N	114°27'13.68544\"W	4543.12	FOUND 3.5\"D BLM BM 1/4 35/2 1971
3.	37°43'22.90788\"N	114°26'40.49484\"W	N/A	CALCULATED SEC COR TRUE POINT
4.	37°43'22.90851\"N	114°26'39.59144\"W	4535.15	FOUND BLM BM WC 35/36/1/2 1971
5.	37°43'22.93548\"N	114°26'07.32575\"W	4597.28	FOUND BLM BM 1/4 36/1 1971
6.	37°42'56.38465\"N	114°27'46.66373\"W	4558.49	FOUND 3.5\"D BLM BM 1/4 2/3 1971
7.	37°42'56.67241\"N	114°26'40.40396\"W	4521.36	FOUND 3.5\"D BLM BM 1/4 1/2 1971
8.	37°42'30.23191\"N	114°27'46.76502\"W	4562.89	FOUND 3.5\"D BLM BM 3/2/10/11 1971
9.	37°42'30.55450\"N	114°27'13.36116\"W	N/A	CALCULATED QTR COR TRUE POINT
10.	37°42'30.42810\"N	114°26'40.31663\"W	4511.32	FOUND 3.5\"D BLM BM 1/2/11/12 1971
11.	37°42'04.06415\"N	114°27'46.55446\"W	4498.81	FOUND 3.25\"D BLM BM RM 66.00'
12.	37°42'04.38800\"N	114°27'45.84175\"W	N/A	CALCULATED QTR COR TRUE POINT
13.	37°42'03.82285\"N	114°27'45.43166\"W	4497.28	FOUND 3.25\"D BLM BM RM 66.00'
14.	37°42'04.51224\"N	114°26'39.98052\"W	4514.89	FOUND 3.25\"D BLM BM 1/4 11/12 1971
15.	37°41'38.56943\"N	114°27'44.92560\"W	4483.73	FOUND NO. 5 REBAR & MND STN, NO MDN.
16.	37°41'38.45106\"N	114°27'12.41632\"W	4510.63	FOUND 3.25\"D BLM BM 1/4 11/14 1971
17.	37°41'38.32726\"N	114°26'39.91020\"W	4549.10	FOUND 3.25\"D BLM BM 11/12/13/14 1971
18.	37°42'17.47016\"N	114°26'40.14856\"W	N/A	CALCULATED CADASTRAL CORNER
19.	37°42'17.48689\"N	114°26'56.63651\"W	N/A	CALCULATED CADASTRAL CORNER
20.	37°42'17.50297\"N	114°27'13.12445\"W	4492.89	SET CADASTRAL CORNER ARTISAN
21.	37°42'17.40679\"N	114°27'29.71391\"W	N/A	CALCULATED CADASTRAL CORNER
22.	37°42'30.39354\"N	114°27'30.06309\"W	N/A	CALCULATED CADASTRAL CORNER
23.	37°42'43.53854\"N	114°27'13.44161\"W	N/A	CALCULATED CADASTRAL CORNER
24.	37°42'30.49161\"N	114°26'56.83889\"W	4507.40	SET CADASTRAL CORNER ARTISAN

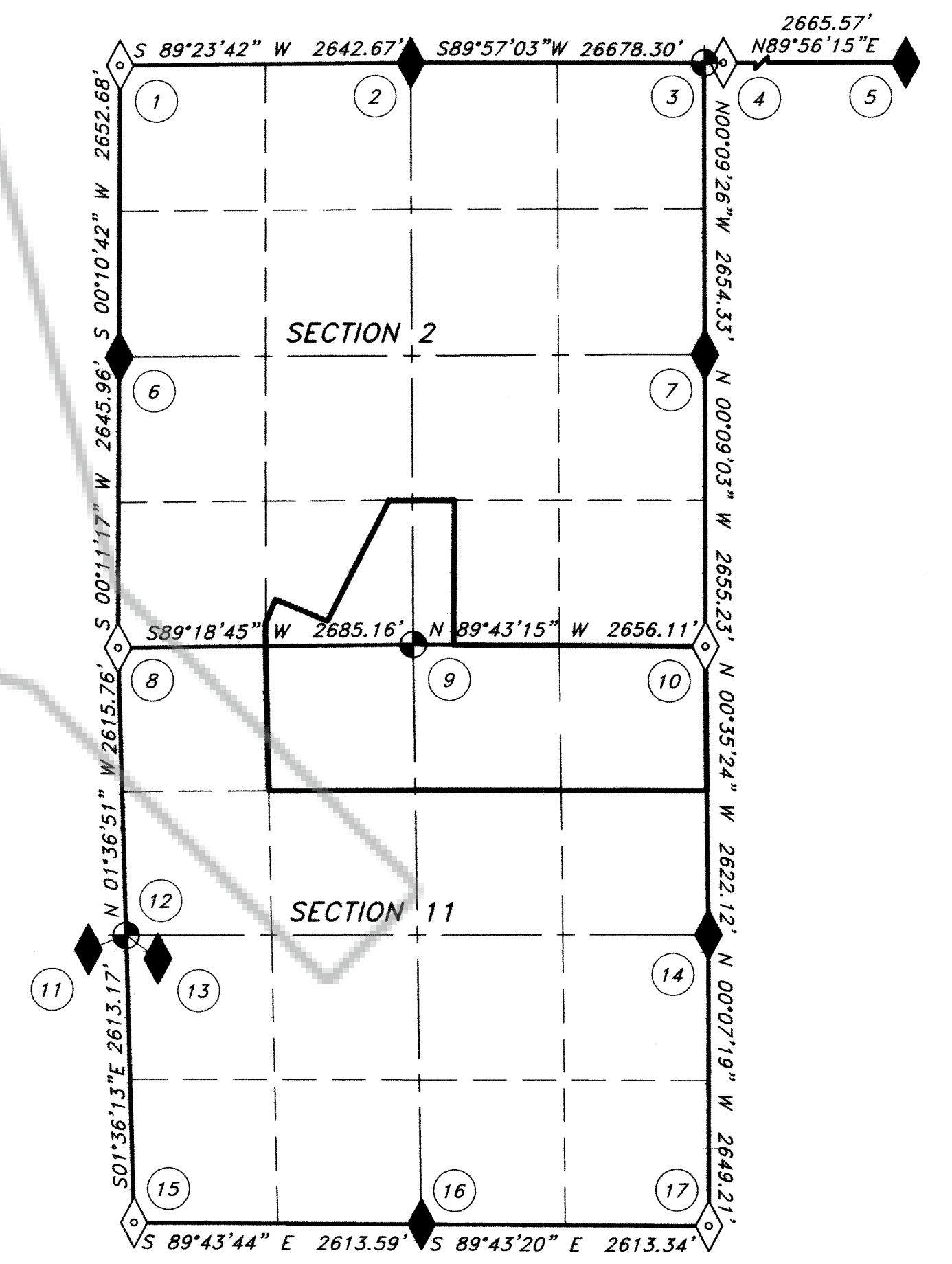
'D' DIAMETER; 'N' NORTH; 'S' SOUTH; 'E' EAST; 'W' WEST; 'P' PLASTIC; 'A' ALUMINUM; 'BR' BRASS; 'M' MONUMENT; 'WC' WITNESS CORNER; 'TC' TRUE CORNER; 'CP' CONTROL POINT; 'BLM' BUREAU LAND MANAGEMENT; DATUM: NAD83 NGS CORS 2002.00

- CONVENTIONAL MAP SYMBOLS**
- FORMER AND CURRENT RIGHT OF WAY EXTENTS
 - BOUNDARY 6,642,966.24 SQ.FT.; 152.502± ACRES
 - SECTION, CENTERSECTION & SIXTEENTH LINES

RIGHT OF WAY AREA DETAIL (EXAGGERATED SCALE)



RECORDER'S NOTE
 ANY SUBSEQUENT CHANGES TO THIS MAP SHOULD BE EXAMINED AND MAY BE DETERMINED BY REFERENCE TO THE COUNTY RECORDER'S CUMULATIVE MAP INDEX. NRS 279.5695



CADASTRAL DIAGRAM 1" = 1200'

BASIS OF BEARINGS (B.O.B.)

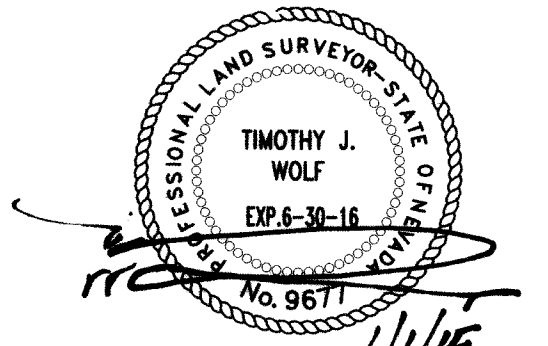
BASIS OF BEARINGS HEREON REPRESENTS A TRUE MERIDIAN PASSING THROUGH POINT "MAY" AT LATITUDE 37°42'37.95112\"N, LONGITUDE 114°27'13.49584\"W. THE BEARINGS HEREON THEREFORE REFLECT GEODETIC (GPS) NORTH USING SURVEY-GRADE EQUIPMENT FROM THE GEOGRAPHIC POINT, MAY & GLEE. EACH POINT IS CONSTRUCTED OF A 1.5\" DIA. ALUMINUM MONUMENT ARTISAN PLS 9677. DATUM IS NGS 2002.00 UTILIZING APPROXIMATELY 60-HOURS OF STATIC DATA COLLECTED AT GLEE AND 24-HOURS AT POINT MAY.

SURVEYOR'S CERTIFICATE

I, TIMOTHY J. WOLF, A PROFESSIONAL LAND SURVEYOR, REGISTERED IN THE STATE OF NEVADA, ACTING AS AGENT FOR ARTISAN SURVEYING GROUP, A NV LLC, DO HEREBY CERTIFY THAT:

1. THIS PLAT REPRESENTS THE RESULTS OF A SURVEY CONDUCTED BY ME AT THE INSTANCE OF CLAY NANNINI FOR THE MCINNIS FAMILY TRUST DATED 10/06/03.
2. THE LANDS SURVEYED LIE WITHIN TOWNSHIP 03 SOUTH, RANGE 67 EAST, M.D.M., LINCOLN COUNTY, NEVADA, AND THE FIELD SURVEY WAS COMPLETED ON DEC. 12, 2014.
3. THIS PLAT COMPLIES WITH APPLICABLE STATE STATUTES AND ANY LOCAL ORDINANCES IN EFFECT ON THE DAY THAT THE GOVERNING BODY GAVE ITS FINAL APPROVAL, IF APPLICABLE.
4. THE MONUMENTS DEPICTED ON THIS PLAT ARE OF THE CHARACTER SHOWN, OCCUPY THE POSITIONS INDICATED, AND ARE OF SUFFICIENT NUMBER AND DURABILITY.

TIMOTHY J. WOLF
 PROFESSIONAL LAND SURVEYOR
 NEVADA CERTIFICATE NO. 9677
 AGENT, ARTISAN SURVEYING GROUP
 A NEVADA LIMITED LIABILITY COMPANY



ARTISAN SURVEYING GROUP, A NV LLC
 "WHERE ART & MEASUREMENT SCIENCE CONVERGE"
 P.O. BOX 396
 PIOCHE, NEVADA 89043-0396
 (775) 962-LAND (5263)

CONTRACT: MCINNIS
 LOCATION: PANACA VALLEY
 NAME: MCINNIS, ROS.DWG SHEET
 REV. DATE: 01/01/15
 DRAWN: T.WOLF
 REVIEWED: C.NANNINI
 H.SCALE: 1"=300'
 V.SCALE: N/A

THE MCINNIS FAMILY TRUST
 DATED 10/6/03
 FILED MARCH 17, 2004
 AS DOCUMENT NO. 121956
 LINCOLN COUNTY, NV

RECORD OF SURVEY RESULTS
 RETRACING SECTIONS 2 & 11
 TO ESTABLISH PORTIONS THEREOF
 TOWNSHIP 3 SOUTH, RANGE 67 EAST
 M.D.M., LINCOLN COUNTY, NV

DOC # 0146538
 01/02/2015 03:41 PM
Official Record
 Recorded & Indexed By:
 ARTISAN LAND TRANSACTION ASSISTANTS
 Lincoln County - NV
 Leslie Boucher - Recorder
 Fee \$21.00 Page 1 of 1
 RPTT Recorded By: LB
 Book- D Page- 0143