

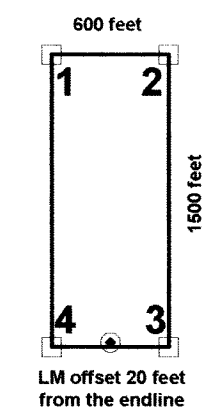
Section lines from  
PLSS Lincoln County, Nevada

- Section line
- Claim corner 2" by 2" wooden post
- Location monument 2" by 2" wooden post.  
Offset 20 feet from the claim end line and  
300 feet from either side line, except for  
claims Gap 12, Gap 202, 204,  
206 & Gap 208 which are offset 500  
feet from the claim end line.
- ⊕ Tie point

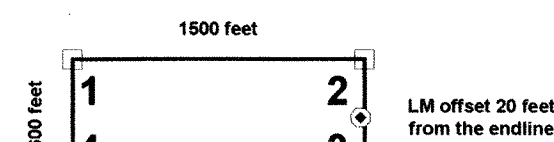
All claims are 1500 feet by 600 feet:

Gap 12 through Gap 172 and Gap 301  
through Gap 302 claims are 1500 feet  
East-West by 600 feet North-South

Gap 202, 204, 206 and 208 claims are  
1500 feet North-South by 600 feet East-West



Typical  
North-South  
claim



Typical  
East-West  
claim

Map of the Gap 12 through Gap 302 Lode Mining Claims  
Claim numbers are not inclusive  
Claims located in Sections 9-12, 13-16 & 23-24  
of T1N, R66E  
Mt. Diablo Base & Meridian  
Highland Mining District  
Lincoln County, Nevada  
1 inch = 500 feet  
NAD83/WGS84, Zone 11N  
Renaissance Exploration, Inc.  
4750 Longley Lane, Suite 106  
Reno, NV 89502

Map of the Gap claim group  
Gap 12 through Gap 302, Not inclusive  
Gap 12, 14, 16, 18, 20-26 located on September 2, 2018  
Gap 37-54, Gap 63-80 located on September 3, 2018  
Gap 81-94, Gap 111-126 located on September 4, 2018  
Gap 95-97, Gap 147-157, 159-167, &  
Gap 301-302 located on September 6, 2018  
Gap 99-104, Gap 127-Gap 145, & Gap 168-172  
located on September 5, 2018  
Gap 105-109, Gap 202, 204, 206 & 208  
located on September 7, 2018  
by David Freedman, Agent for:  
Renaissance Exploration, Inc.  
4750 Longley Lane, Suite 106  
Reno, NV 89502

T1N R66E

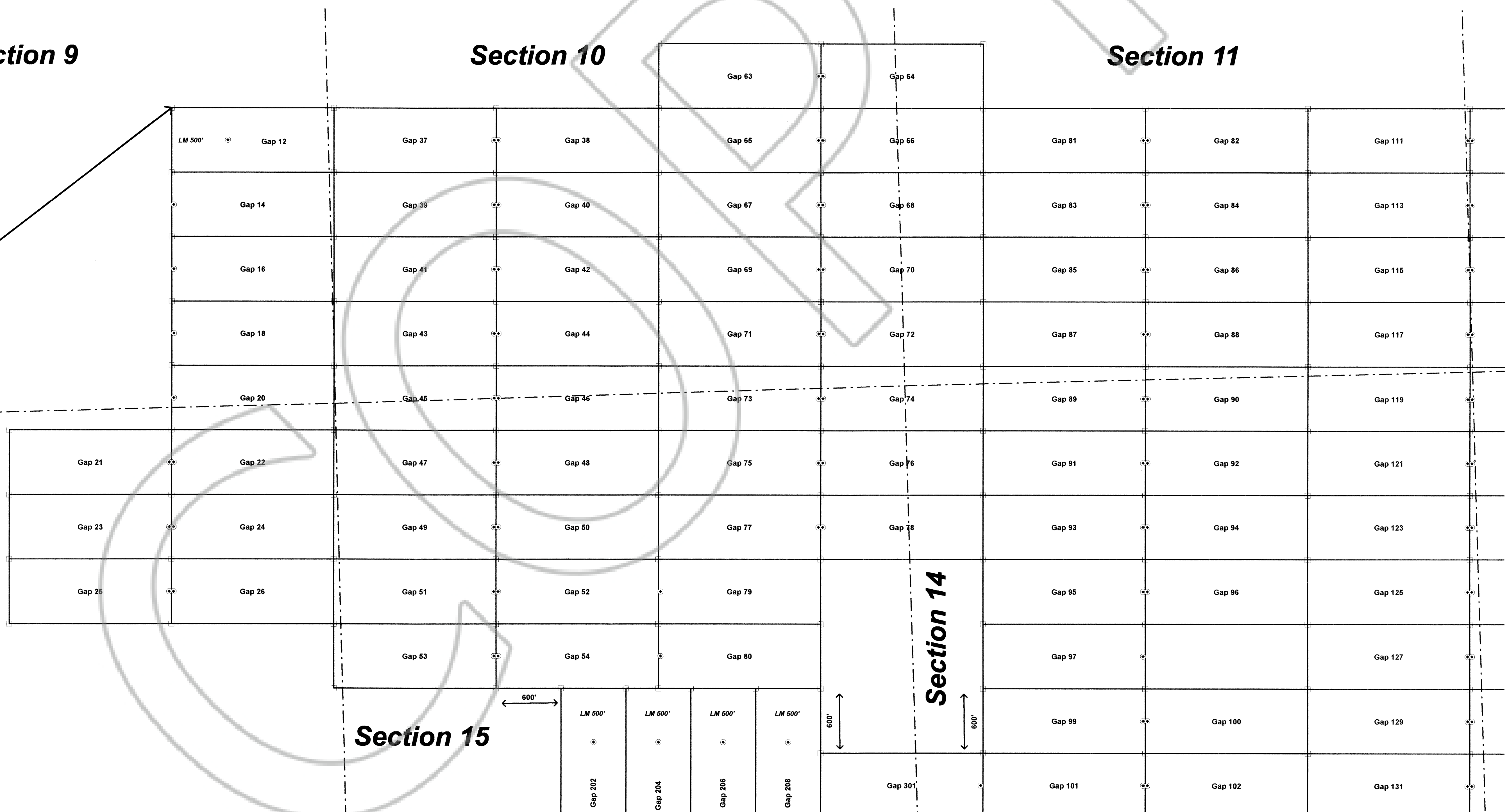
Section 9

Section 10

Section 11

The tiepoint for  
the Gap claims,  
Map 1 of 3 sheets  
is about 4720 feet  
in a N52 direction  
from the SW corner  
of Section 9, T1N, R66E  
to the NW corner of  
the Gap 12 claim

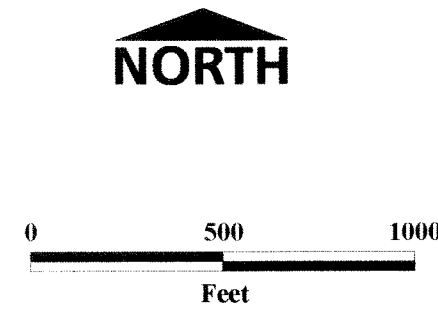
Section 16



LINCOLN COUNTY, NV 2018-155572  
Rec: \$2,125.00  
Total: \$2,125.00 11/26/2018 02:30 PM  
RENAISSANCE EXPLORATION, INC. Pgs: 3 AK

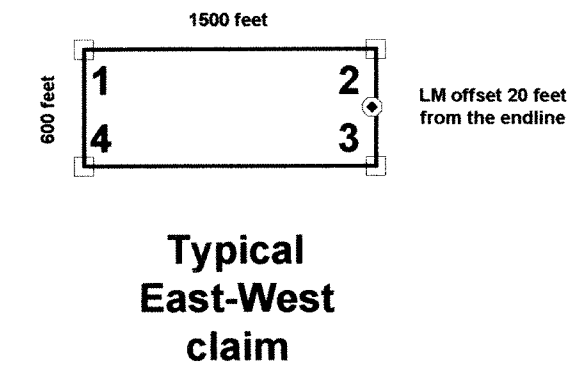
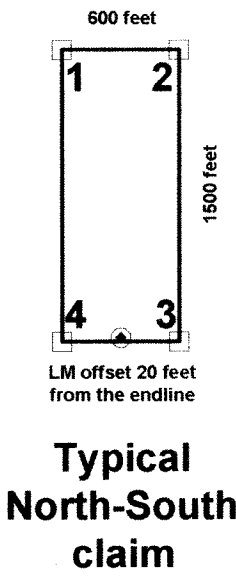


OFFICIAL RECORD  
LESLIE BOUCHER, RECORDER



Section lines from  
PLSS Lincoln County, Nevada

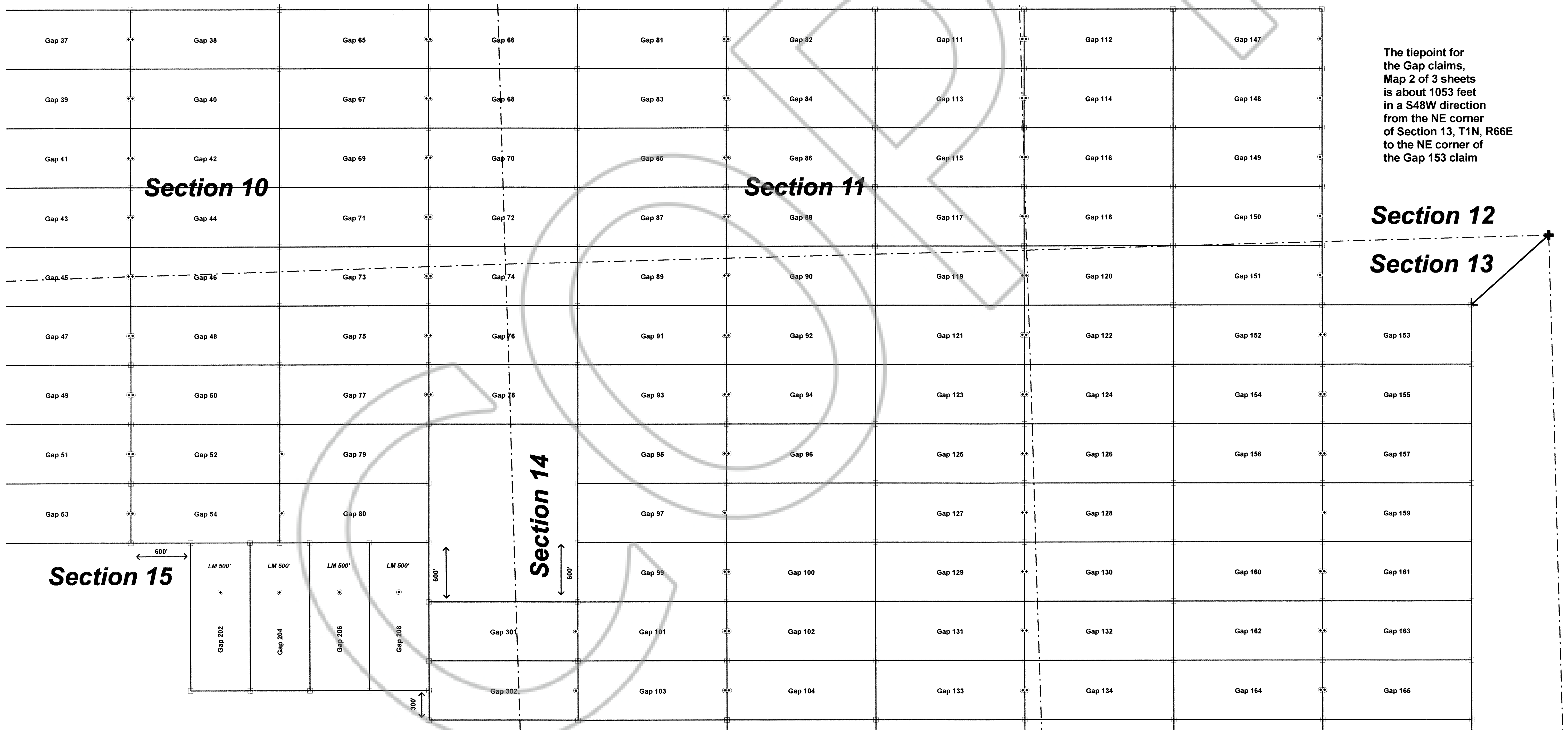
- Section line
  - Claim corner 2" by 2" wooden post
  - Location monument 2" by 2" wooden post. Offset 20 feet from the claim end line and 300 feet from either side line, except for claims Gap 12, Gap 202, 204, 206 & Gap 208 which are offset 500 feet from the claim end line.
  - ⊕ Tie point
- All claims are 1500 feet by 600 feet:  
Gap 12 through Gap 172 and Gap 301 through Gap 302 claims are 1500 feet East-West by 600 feet North-South  
Gap 202, 204, 206 and 208 claims are 1500 feet North-South by 600 feet East-West

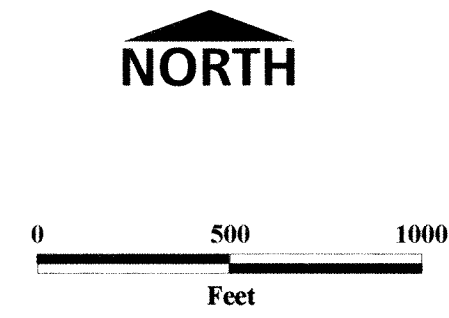


Map of the Gap 12 through Gap 302 Lode Mining Claims  
Claim numbers are not inclusive  
Claims located in Sections 9-12, 13-16 & 23-24  
of T1N, R66E  
Mt. Diablo Base & Meridian  
Highland Mining District  
Lincoln County, Nevada  
1 inch = 500 feet  
NAD83/WGS84, Zone 11N  
Renaissance Exploration, Inc.  
4750 Longley Lane, Suite 106  
Reno, NV 89502

Map of the Gap claim group  
Gap 12 through Gap 302, Not inclusive  
Gap 12, 14, 16, 18, 20-26 located on September 2, 2018  
Gap 37-54, Gap 63-80 located on September 3, 2018  
Gap 81-94, Gap 111-126 located on September 4, 2018  
Gap 95-97, Gap 147-157, 159-167, &  
Gap 301-302 located on September 6, 2018  
Gap 99-104, Gap 127-Gap 145, & Gap 168-172  
located on September 5, 2018  
Gap 105-109, Gap 202, 204, 206 & 208  
located on September 7, 2018  
by David Freedman, Agent for:  
Renaissance Exploration, Inc.  
4750 Longley Lane, Suite 106  
Reno, NV 89502

T1N R66E

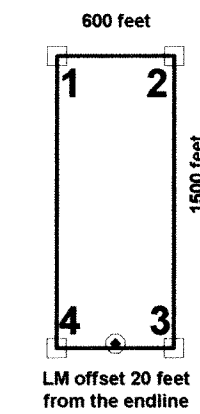




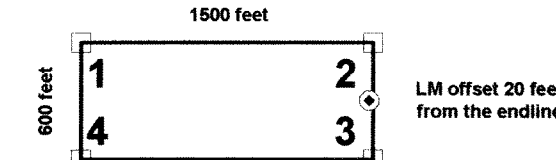
Section lines from  
PLSS Lincoln County, Nevada

- - - - - Section line
- Claim corner 2" by 2" wooden post
- Location monument 2" by 2" wooden post.  
Offset 20 feet from the claim end line and 300 feet from either side line, except for claims Gap 12, Gap 202, 204, 206 & Gap 208 which are offset 500 feet from the claim end line.
- + Tie point

All claims are 1500 feet by 600 feet:  
Gap 12 through Gap 172 and Gap 301 through Gap 302 claims are 1500 feet East-West by 600 feet North-South  
Gap 202, 204, 206 and 208 claims are 1500 feet North-South by 600 feet East-West



Typical  
North-South  
claim

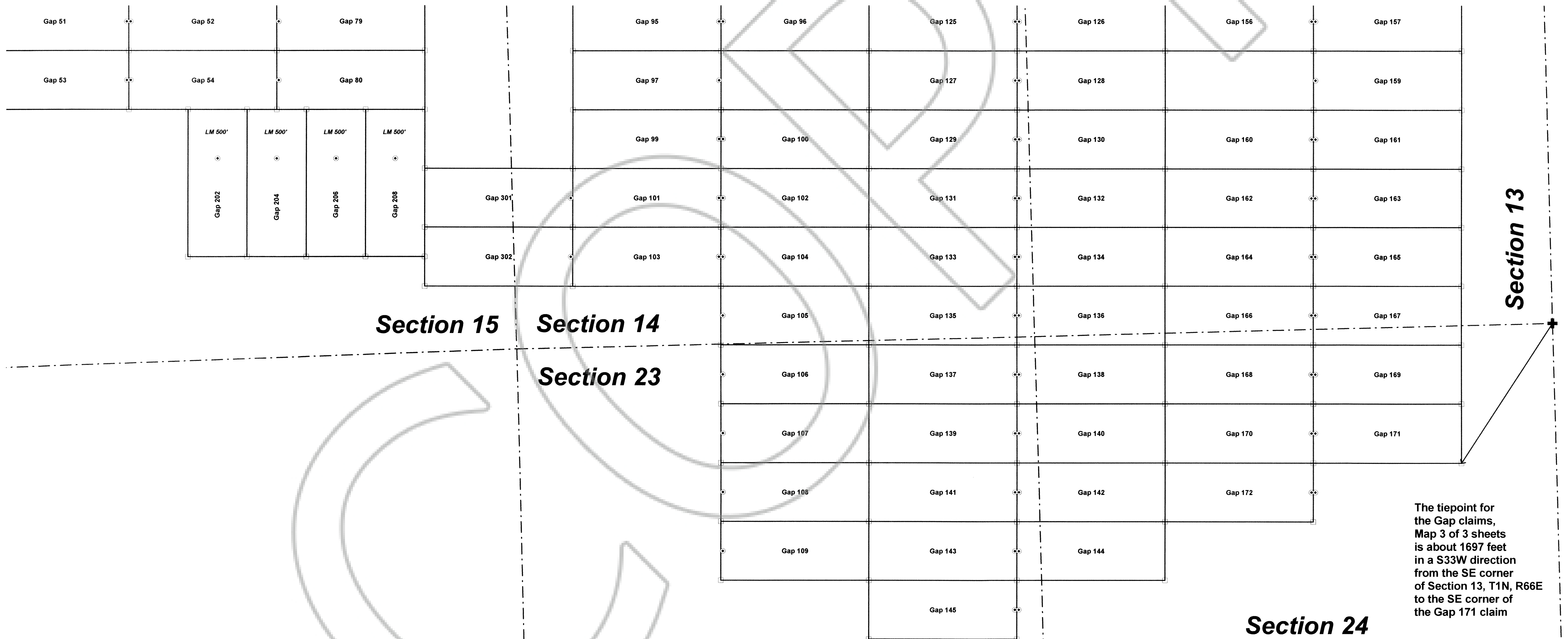


Typical  
East-West  
claim

Map of the Gap 12 through Gap 302 Lode Mining Claims  
Claim numbers are not inclusive  
Claims located in Sections 9-12, 13-16 & 23-24  
of T1N, R66E  
Mt. Diablo Base & Meridian  
Highland Mining District  
Lincoln County, Nevada  
1 inch = 500 feet  
NAD83/WGS84, Zone 11N  
Renaissance Exploration, Inc.  
4750 Longley Lane, Suite 106  
Reno, NV 89502

Map of the Gap claim group  
Gap 12 through Gap 302, Not inclusive  
Gap 12, 14, 16, 18, 20-26 located on September 2, 2018  
Gap 37-54, Gap 63-80 located on September 3, 2018  
Gap 81-94, Gap 111-126 located on September 4, 2018  
Gap 95-97, Gap 147-157, 159-167, &  
Gap 301-302 located on September 6, 2018  
Gap 99-104, Gap 127-Gap 145, & Gap 168-172  
located on September 5, 2018  
Gap 105-109, Gap 202, 204, 206 & 208  
located on September 7, 2018  
by David Freedman, Agent for:  
Renaissance Exploration, Inc.  
4750 Longley Lane, Suite 106  
Reno, NV 89502

T1N R66E



The tiepoint for the Gap claims, Map 3 of 3 sheets is about 1697 feet in a S33W direction from the SE corner of Section 13, T1N, R66E to the SE corner of the Gap 171 claim