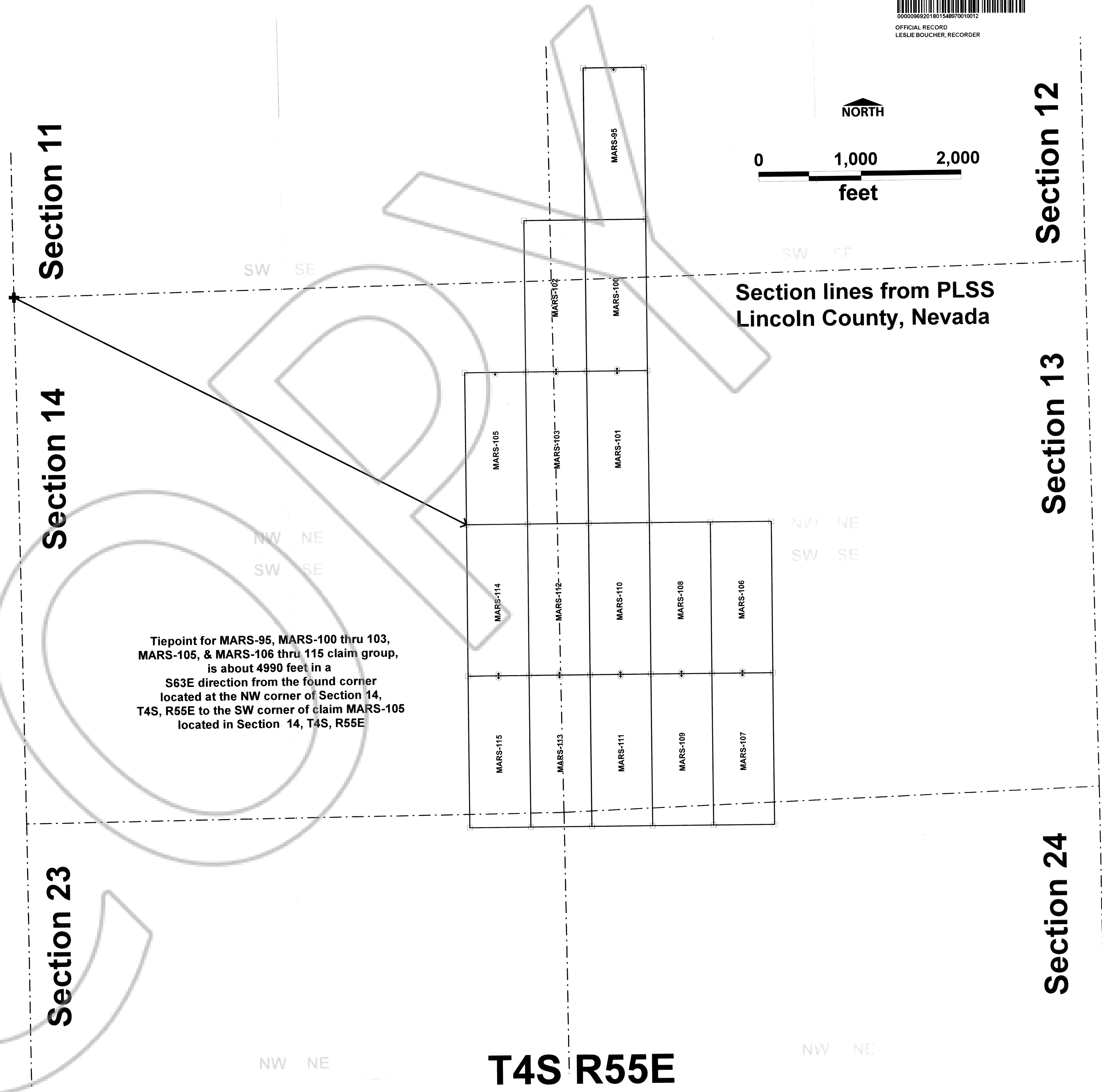
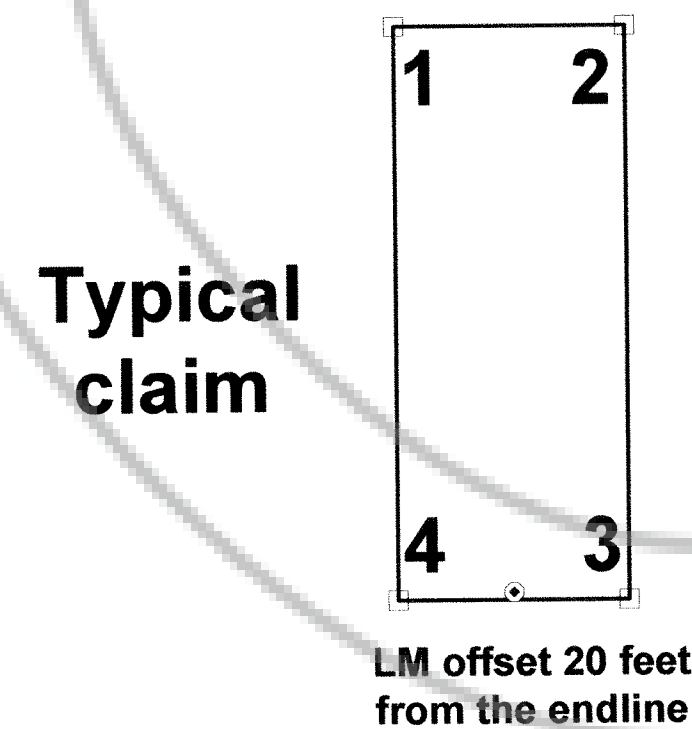


**Map of the MARS-95, MARS-100 thru 103, MARS-105
 and MARS-106 thru MARS-115**
 Lode Mining Claim Group
 Located in Sections 11, 12, 13, 14, 23 & 24, T4S, R55E
 Don Dale Mining District
 Lincoln County, Nevada
 1 inch = 500 feet
 NAD83/WGS84, Zone 11, MDB&M
 Renaissance Exploration, Inc.
 4750 Longley Lane, Suite 106
 Reno, NV 89502

MARS-95, MARS-100 thru 103 & MARS-105
 Located on April 11, 2018
AND MARS-106 thru MARS-115
 Located on April 12, 2018
 by Lindsay Craig
 Agent for:
 Renaissance Exploration, Inc.
 4750 Longley Lane, Suite 106
 Reno, NV 89502

All claims are 1500 feet North-South by
 600 feet East-West.

- Section line
- Claim corner 2" by 2" wooden post
- Location monument 2" by 2" wooden post.
 Offset 20 feet from the claim end line and
 300 feet from either side line.
- + Found corner at NW corner of
 Section 14, T4S, R55E



T4S R55E