



OFFICIAL RECORD  
 LESLIE BUCHER, RECORDER

16

15

14

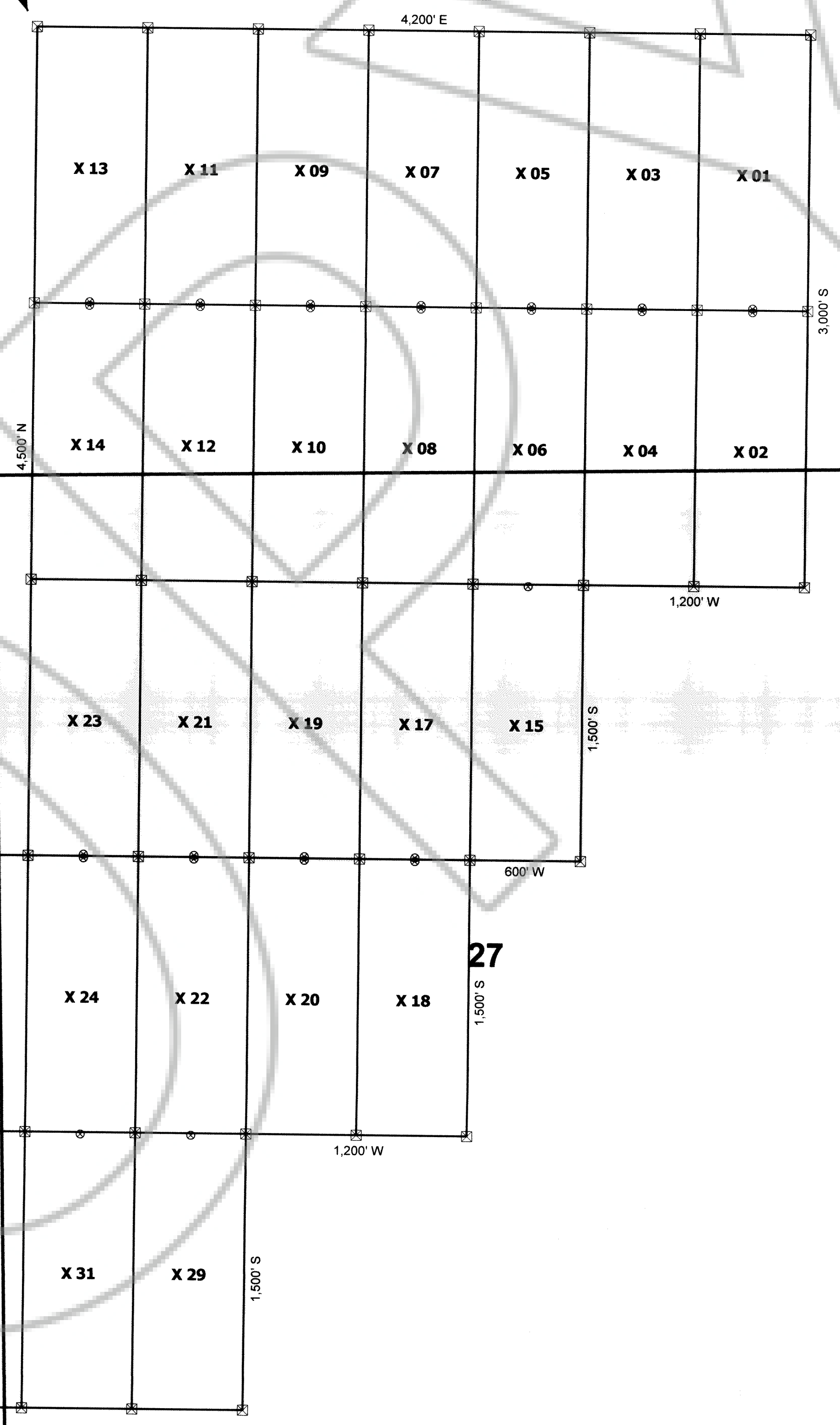
21

22

23

T9S, R65E

Tie Point Data:  
 The NW corner of X 13 is located 1,586 ft  
 south and 741 ft east of the found Benchmark 25 DOR  
 along NV State Rte 317 within Section 21, T9S, R65E, MDM.



28

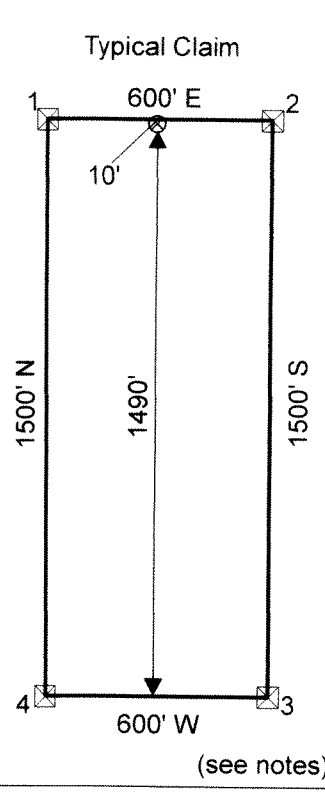
27

26

33

34

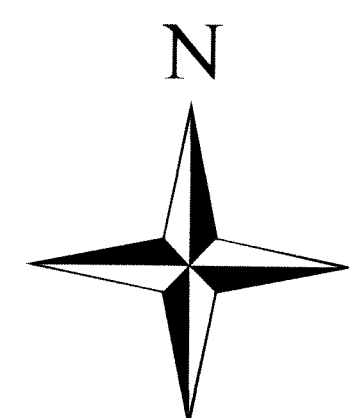
35



**Rangefront Consulting LLC**

Location Dates:  
 June 13, 2018: X 01 - 15, 17 - 24, 26, 28 - 29, 31, 33, 35, 37, 39  
 June 15, 2018: X 30, 32

Notes:  
 X location monuments are set 10 feet from endline along centerline of claim.  
 All location monuments are 2"x2"x4' wooden posts with scribed metal tags.  
 All claims are 600' x 1500'.



UTM NAD83  
 Sections from BLM GCDB  
 1:6,000 1 inch = 500 feet  
 0 500 1,000 1,500 Feet

**X Unpatented Lode Mining Claims**

Township 9 South, Range 65 East, Sect. 22, 27, & 28  
 Mt. Diablo Base Line and Meridian  
 Lincoln County, Nevada

Locator:  
 Rangefront Consulting LLC  
 1031 Railroad St, Ste 102B  
 Elko, Nevada 89801

Sheet 1 of 1

Drawn by: HAW

Date: 18-June-2018