

**Official Record**Recording requested By  
ARTISAN SURVEYING GROUP

Lincoln County - NV

Leslie Boucher - Recorder

Fee: \$35.00

Page 1 of 3

RPTT:

Recorded By: AK

Book- D Page- 0262

**CORNER RECORD**

SECTION: 8, T4S, R67E, MDM.



0153997

**SURVEYOR'S CERTIFICATE**Sheet 1 of 3

I, Timothy J. Wolf, a Professional Land Surveyor, registered in the State of Nevada, as agent for Artisan Surveying Group, A NV LLC, certify;

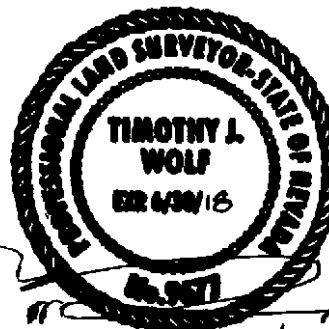
1) This Corner Record represents the establishment or restoration of a corner or accessory to a corner conducted under my direct supervision.

2) The monument or accessories perpetuated lie within the Sections 8, Township 4 South Range 67 East, as referenced to the Mount Diablo Meridian, Lincoln County, Nevada, and the establishment, evidence, or restoration was completed in March 2018. This work perpetuates the Caliente Control System established by the late Richard Fonger, PLS, July 6, 1990, as approved by the Caliente City Council on July 17, 1990. Said coordinate system was again memorialized by re-recording the minutes of City Council meeting and signed ratification by Mayor George T. Rowe which now resides in Lincoln County Recorder's Document No. 0148417, and Fonger work evidenced in LC Document No. 0148460, Sealed by PLS' WOLF & SMITH.

3) This Corner Record has been filed pursuant to N.R.S. 329.140 or N.R.S. 329.150 and complies with the provisions of Nevada Administrative Code Section 329 and any local ordinances in effect on the date that the establishment or restoration was completed.

4) The monument or witness corner monument and accessories found are of the character shown, occupy the positions indicated and are of sufficient durability.

Timothy J. Wolf  
Professional Land Surveyor  
Nevada License No. 9677  
Agent, Artisan Surveying Group, a NV LLC



RECORDER, PLEASE RETURN TO:  
Artisan Surveying Group  
P.O. Box 396  
Pioche, NV 89043  
(775) 962-LAND (5263)  
www.ArtisanSurveying.com



0153997

Sec. 8  
Twn. 4 South  
Rng. 67 East  
M.D.M.

# CORNER RECORD

## MONUMENTS

Sheet 2 of 3

ARTISAN  
GEODETTIC "WHERE ART & MEASUREMENT SCIENCE CONVERGE"  
NORTH

PRIMARY CONTROL  
FONGER CALIENTE CITY  
MONUMENT NO. 76

FND 2" DIA. ALUMINUM "CCC1"  
LAT: 37°36'56.43437"N  
LON: 114°30'54.32906"W  
E.H.: 1314.742m

FND 2" DIA. ALUMINUM "CCC2"  
LAT.: 37°36'54.93750"N  
LON.: 114°30'25.36059"W  
EL.HGT.: 1327.989m

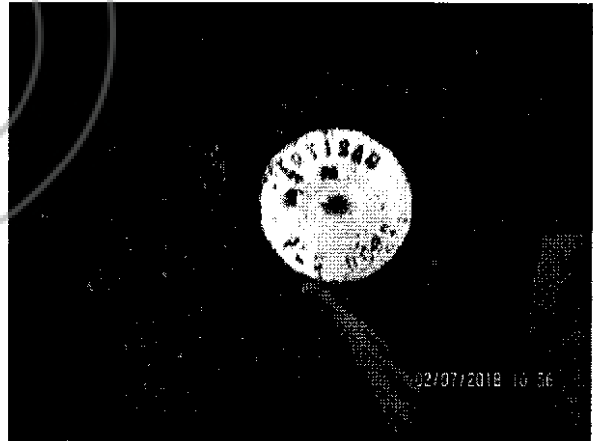
FOUND MAGNET & NO.5 REBAR  
APPROXIMATELY 2.5' BELOW  
ASPHALT SURFACE WITHIN  
EXPECTED SPATIAL ERROR OF  
COORDINATES.

CONSTRUCTED 1.5" DIAMETER  
ALUMINUM MONUMENT ON FONGER  
POINT NO. 76. CITY INSTALLED  
HAND WELL & COVER.



### DATUM

ORIGINAL PRIMARY CONTROL POINT  
POSITIONS FOR "CCC1" AND "CCC2"  
WERE ESTABLISHED USING NGS STATIC  
SEEDED OPUS WITH 50± HOURS OF  
STATIC DATA NGS NAD83 (2010.0000).  
[HTTP://WWW.NGS.NOAA.GOV/OPUS](http://www.ngs.noaa.gov/opus)



### REFERENCES

RECORD OF SURVEY, CITY OF CALIENTE, RICHARD E. FONGER, JULY 6, 1990. LC  
DOC. NO. 0148460 & CITY COUNCIL APPROVAL LC DOC. NO. 0148417.

Artisan Surveying Group, a NV LLC

[www.ArtisanSurveying.com](http://www.ArtisanSurveying.com)

"Where Art & Measurement Science Converge" (775) 962-LAND

Sec. 8  
Twn. 4 South  
Rng. 67 East  
M.D.M.

# CORNER RECORD MONUMENTS

Sheet 3 of 3

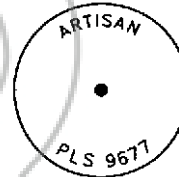
ARTISAN  
"WHERE ART & MEASUREMENT SCIENCE CONVERGE"  
GEODETTIC NORTH

PRIMARY CONTROL  
FONGER CALIENTE CITY  
MONUMENT NO. 81

FND 2" DIA. ALUMINUM "CCC1"  
LAT: 37°36'56.43437"N  
LON: 114°30'54.32906"W  
E.H.: 1314.742m

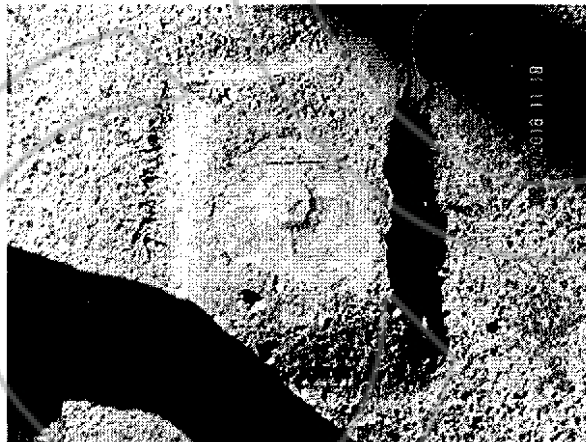
FND 2" DIA. ALUMINUM "CCC2"  
LAT.: 37°36'54.93750"N  
LON.: 114°30'25.36059"W  
EL.HGT.: 1327.989m

FOUND 4X8" CONCRETE FOOTING  
& BRASS STEM UPRIGHT 0.2'  
BELOW ASPHALT WITHIN EXPECTED  
SPATIAL ERROR OF COORDINATES.  
REEMED STEM, REPLACED WITH 2"  
DIAMETER ALUMINUM MONUMENT  
ON FONGER POINT NO. 81. CITY  
INSTALLED HAND WELL & COVER.



## DATUM

ORIGINAL PRIMARY CONTROL POINT  
POSITIONS FOR "CCC1" AND "CCC2"  
WERE ESTABLISHED USING NGS STATIC  
SEEDED OPUS WITH 50± HOURS OF  
STATIC DATA NGS NAD83 (2010.0000).  
[HTTP://WWW.NGS.NOAA.GOV/OPUS](http://www.ngs.noaa.gov/opus)



## REFERENCES

RECORD OF SURVEY, CITY OF CALIENTE, RICHARD E. FONGER, JULY 6, 1990. LC  
DOC. NO. 0148460 & CITY COUNCIL APPROVAL LC DOC. NO. 0148417.