

**Official Record**Recording requested By  
ARTISAN SURVEYING GROUP

Lincoln County - NV

Leslie Boucher - Recorder

Fee: \$35.00

Page 1 of 2

RPTT:

Recorded By: AK

Book- D Page- 0254

## CORNER RECORD

SECTIONS: 22, T1N, R67E, MDM.



0153731

## SURVEYOR'S CERTIFICATE

Sheet 1 of 2

I, Timothy J. Wolf, a Professional Land Surveyor, registered in the State of Nevada, as agent for Artisan Surveying Group, a NV Limited Liability Company, certify;

1) This Corner Record represents the establishment or restoration of a corner or accessory to a corner conducted under my direct supervision.

2) The monument or accessories perpetuated lie within the Section(s), Townships, and Ranges as noted above, as referenced to the Mount Diablo Meridian, Lincoln County, Nevada, and the establishment or restoration was completed in February, 2018.

3) This Corner Record has been filed pursuant to N.R.S. 329.140 or N.R.S. 329.150 and complies with the provisions of Nevada Administrative Code Section 329 and any local ordinances in effect on the date that the establishment or restoration was completed.

4) The monument or witness corner monument and accessories found are of the character shown, occupy the positions indicated and are of sufficient durability (latter solely if established by Artisan Surveying Group, a NV Limited Liability Company).

Timothy J. Wolf  
Professional Land Surveyor  
Nevada License No. 9677  
Agent, Artisan Surveying Group



2/6/18

RECORDER, PLEASE RETURN TO:  
Artisan Surveying Group  
P.O. Box 396  
Pioche, NV 89043  
(775) 962-LAND  
[www.ArtisanSurveying.com](http://www.ArtisanSurveying.com)



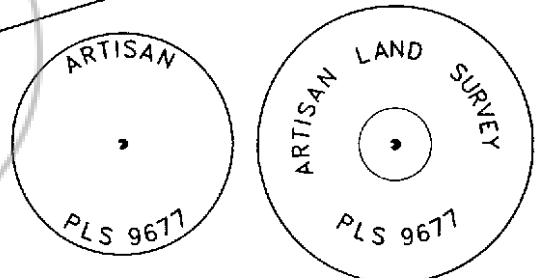
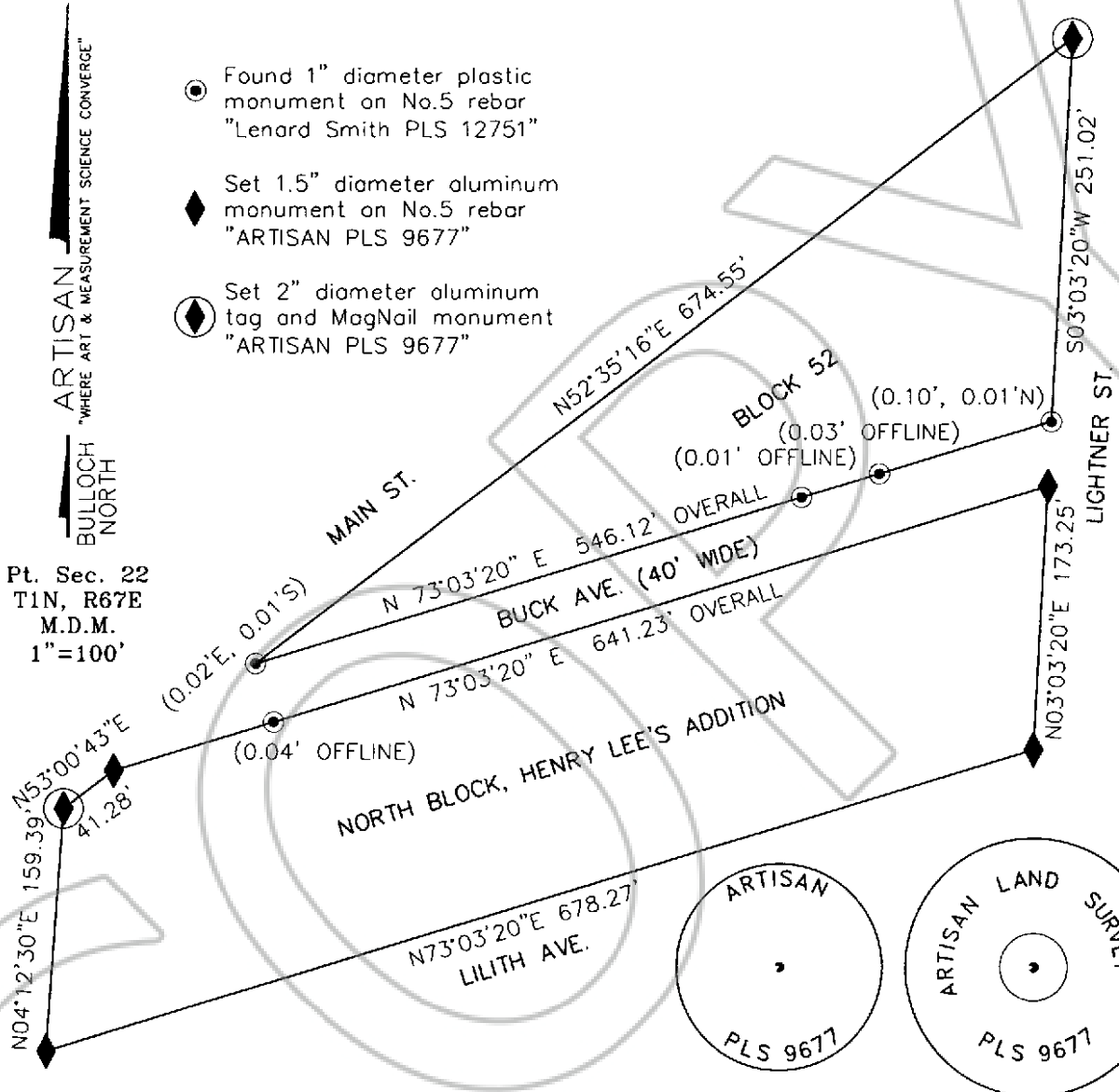
0153731

# CORNER RECORD Sheet 2 of 2

ARTISAN  
"WHERE ART & MEASUREMENT SCIENCE CONVERGE"  
BULLOCH  
NORTH

- Found 1" diameter plastic monument on No.5 rebar "Lenard Smith PLS 12751"
- ◆ Set 1.5" diameter aluminum monument on No.5 rebar "ARTISAN PLS 9677"
- ◈ Set 2" diameter aluminum tag and MagNail monument "ARTISAN PLS 9677"

Pt. Sec. 22  
T1N, R67E  
M.D.M.  
1"=100'



### LEGEND

— Exterior Block Boundary and Right of Way Line

### REFERENCES

1. Pioche LC Doc. No.57; Supplement A Doc. No.61; Bulloch Map No. 100051; Lincoln County Recorder's Office.
2. Henry Lee's Subdivision Map, Doc No.16373, Lincoln County Recorder's Office.

Artisan Surveying Group  
"Where Art & Measurement Science Converge"  
P.O. Box 396, Pioche, NV 89043-0396



www.ArtisanSurveying.com  
TWolf@ArtisanSurveying.com  
(775) 962-LAND (5263)