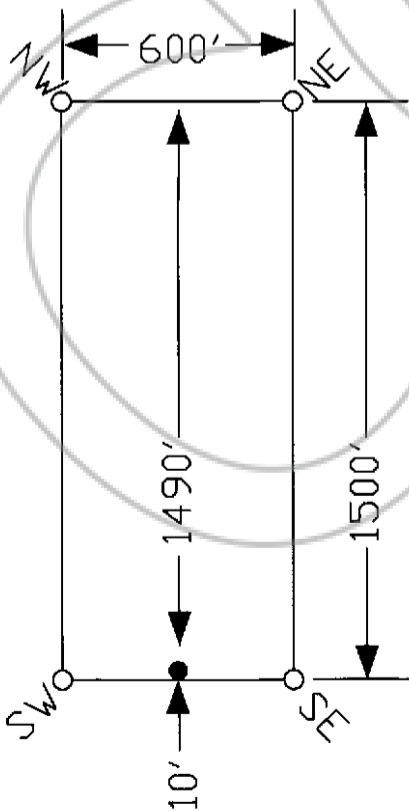
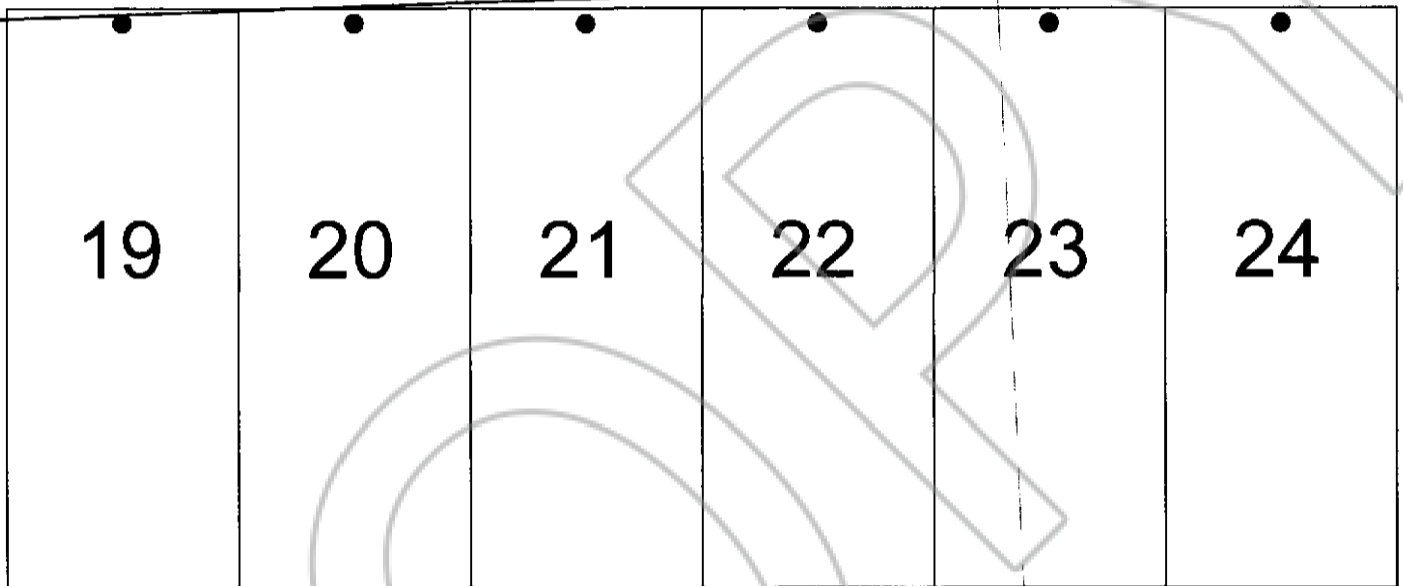
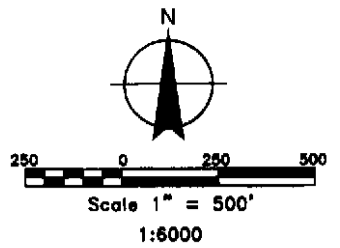


TIE POINT DATA:
 THE NORTHEAST CORNER OF GC 24 LIES APPROXIMATELY
 1,666 FEET WEST AND 157 FEET SOUTH OF THE SURVEYED
 SOUTHEAST CORNER OF SECTION 8, T.3S., R.67E., M.D.B.M.

8



LOCATION DATE:
 January 16, 2018

17

DOC # 0153654

02/05/2018 10:22 AM

Official Record

Recording requested By
 CARLIN TREND MINING SERVICES

Lincoln County - NV

Leslie Boucher - Recorder

Fee: \$100.00

Page 1 of 1

RPTT:

Recorded By: AK

Book- 317 Page- 0075



0153654

TYPICAL CLAIM

NOTES:
 LOCATION MONUMENTS SET 10' FROM CLAIM END CENTERLINES
 UNLESS NOTED ON MAP. ALL LOCATION MONUMENTS AND CLAIM
 POSTS ARE 2"x2"x4' WOODEN STAKES.

	Location: Manta Minerals Corp. 1901 Davis Avenue, Unit B-1, Juneau, Alaska 99801 GC 19-24 Lode Claims T.3S., R.67E., Lincoln County, Nevada	
	309 - 5th STREET ELKO, NV 89801 PH: (775) 778-0668 FAX: (775) 778-0687	DATE: January 2018