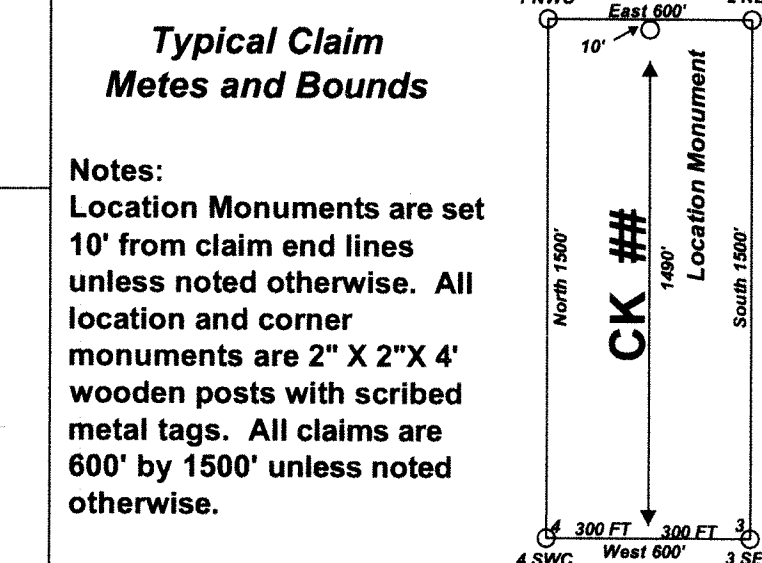
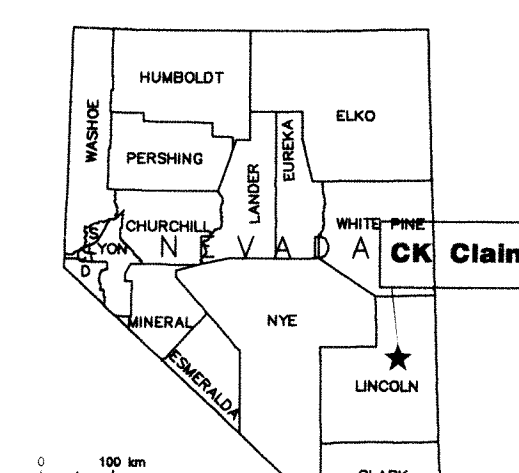
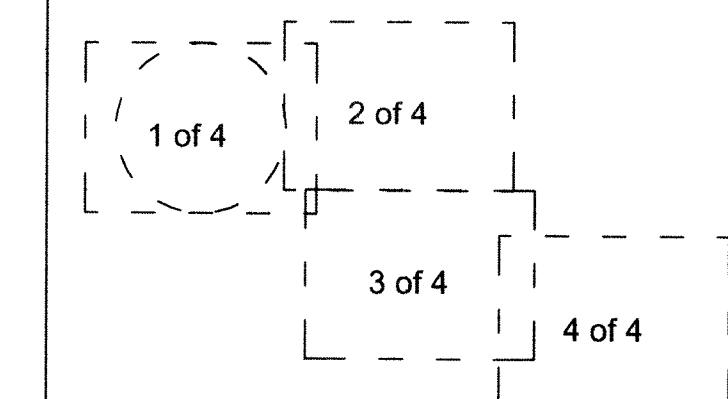


**Location Map
for CK 1-220 & 222-385
Lode Claims
Sheet 1 of 4**

"CK" Lode claims 99-152 & 167-216 were located on October 7, 2017 and
 "CK" Lode claims 80-98, 153-166 & 224-257 were located on October 8, 2017 and
 "CK" Lode claims 38-62, 64-79, 217-220 & 258-263 were located on October 9, 2017 and
 "CK" Lode claims 264-312 were located on October 10, 2017 and
 "CK" Lode claims 321-351 were located on October 11, 2017
 "CK" Lode claims 313-320 & 352-385 were located on October 12, 2017 and
 "CK" Lode claims 8-33 were located on October 14, 2017 and
 "CK" Lode claims 1-7, 34-37, 63 & 222-223 were located on October 15, 2017 in
 Township 8 South, Range 67 East, Section 12;
 Township 8 South, Range 68 East, Sections 4-10, 15-18, 20-27 & 35-36;
 Township 8 South, Range 69 East, Sections 30-31;
 in Lincoln County, Nevada, MDB&M.



Notes:
 Location Monuments are set 10' from claim end lines unless noted otherwise. All location and corner monuments are 2" X 2" X 4' wooden posts with scribed metal tags. All claims are 600' by 1500' unless noted otherwise.



PROPERTY LOCATION
 Locator:
 Silver One Resources (USA) Inc.
 1859 Whitney Mesa Dr.
 Henderson, NV 89014

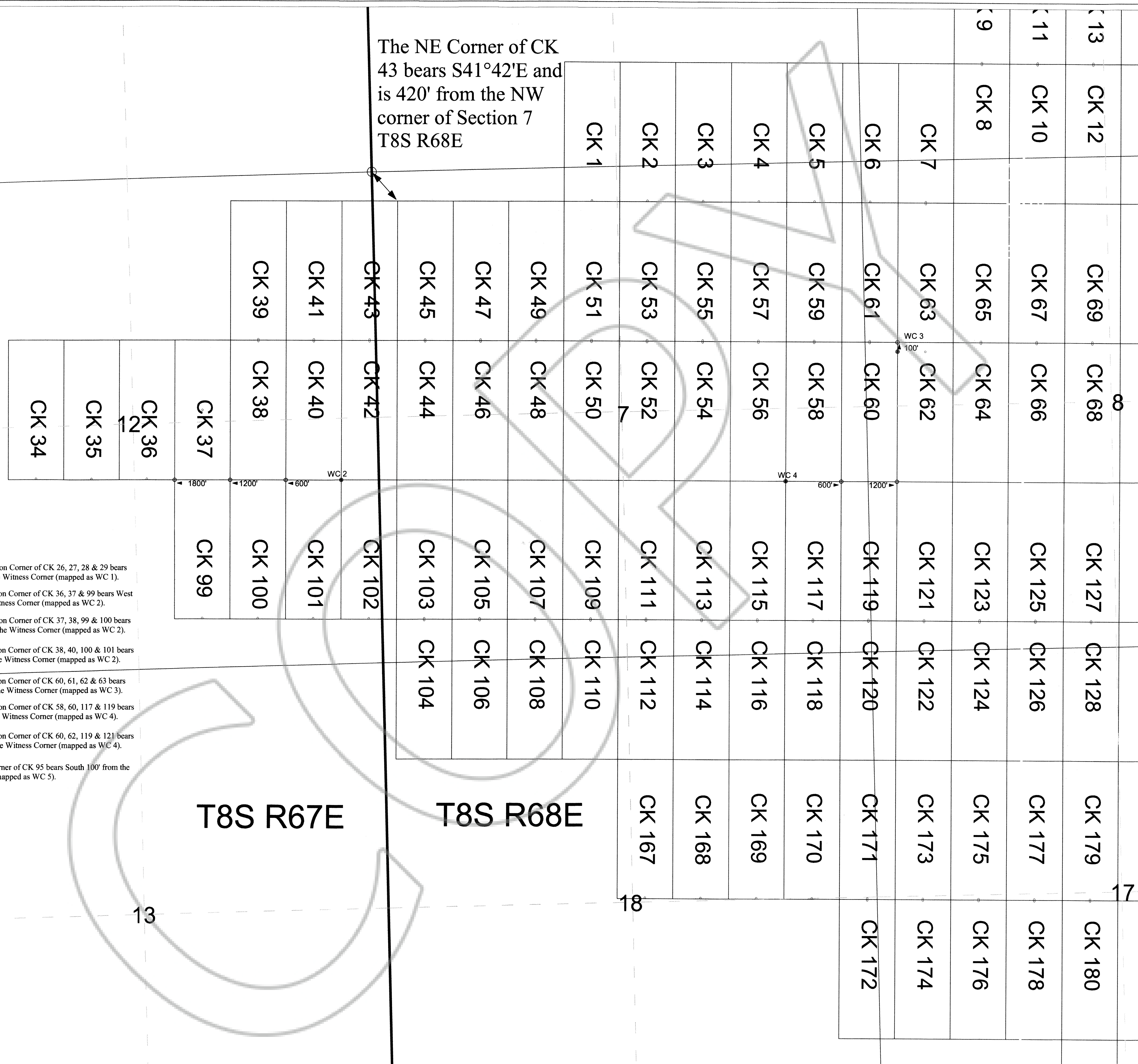
Bearings reported in UTM Grid North (GN), Datum, 1983.
 Scale 1:6000
 1" = 500'
 FEET

Location Map for CK 1-220 & 222-385
 Lode Claims
 Sheet 1 of 4
 Silver One Resources (USA) Inc.
 1859 Whitney Mesa Dr.
 Henderson, NV 89014
 CK_1-385_Claims_N83211ft.dwg
 December 14, 2017
 Drawn By: G.I.S. Land Services
 Field Work By: T&T Exploration L.L.C.
 Datum: 1983 Projection: UTM Zone 11
 Units: Feet

DOC # 0158439
 12/18/2017 04:59 PM
Official Record
 Recording Requested By:
 SILVER ONE RESOURCES (USA) INC.
 Lincoln County - NV
 Leslie Boucher - Recorder
 Fee \$5,770.00 Page 1 of 4
 0071 Recorded By: RB
 Book- 316 Page- 0273



The NE Corner of CK 43 bears S41°42'E and is 420' from the NW corner of Section 7 T8S R68E



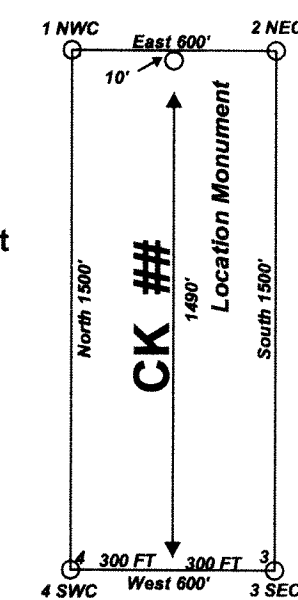
The actual Common Corner of CK 26, 27, 28 & 29 bears East 200' from the Witness Corner (mapped as WC 1).
 The actual Common Corner of CK 36, 37 & 99 bears West 1800' from the Witness Corner (mapped as WC 2).
 The actual Common Corner of CK 38, 39, 99 & 100 bears West 1200' from the Witness Corner (mapped as WC 2).
 The actual Common Corner of CK 38, 40, 100 & 101 bears West 600' from the Witness Corner (mapped as WC 2).
 The actual Common Corner of CK 60, 61, 62 & 63 bears North 100' from the Witness Corner (mapped as WC 3).
 The actual Common Corner of CK 58, 60, 117 & 119 bears East 600' from the Witness Corner (mapped as WC 4).
 The actual Common Corner of CK 60, 62, 119 & 121 bears East 1200' from the Witness Corner (mapped as WC 4).
 The actual NE Corner of CK 95 bears South 100' from the Witness Corner (mapped as WC 5).

Location Map for CK 1-220 & 222-385 Lode Claims Sheet 4 of 4

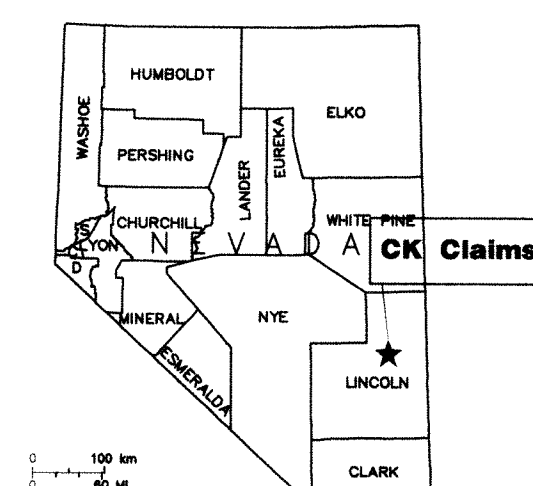
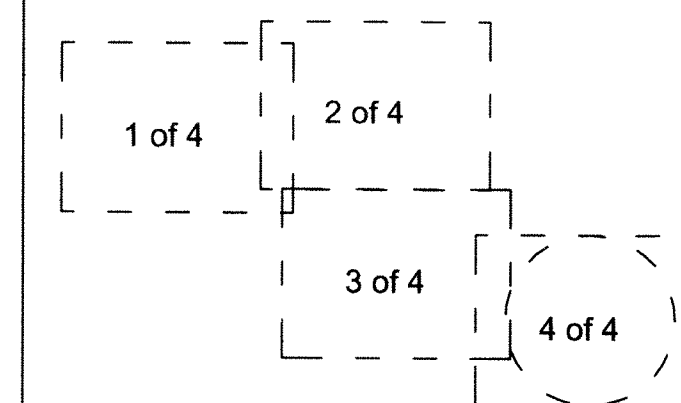
"CK " lode claims 99-152 & 167-216 were located on October 7, 2017 and
 "CK " lode claims 80-98, 153-166 & 224-257 were located on October 8, 2017 and
 "CK " lode claims 38-62, 64-79, 217-220 & 258-263 were located on October 9, 2017 and
 "CK " lode claims 264-312 were located on October 10, 2017 and
 "CK " lode claims 321-351 were located on October 11, 2017
 "CK " lode claims 313-320 & 352-385 were located on October 12, 2017 and
 "CK " lode claims 8-33 were located on October 14, 2017 and
 "CK " lode claims 1-7, 34-37, 63 & 222-223 were located on October 15, 2017 in
 Township 8 South, Range 67 East, Section 12;
 Township 8 South, Range 68 East, Sections 4-10, 15-18, 20-27 & 35-36;
 Township 8 South, Range 69 East, Sections 30-31; in Lincoln County, Nevada, MDB&M.

Typical Claim Metes and Bounds

Notes:
 Location Monuments are set 10' from claim end lines unless noted otherwise. All location and corner monuments are 2" X 2" X 4' wooden posts with scribed metal tags. All claims are 600' by 1500' unless noted otherwise.



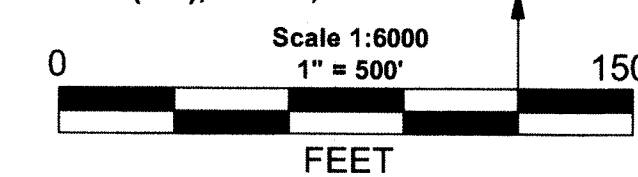
⊙ Witness Corner (WC)
 ○ Actual Corner
 ▼ Direction from Witness Corner to Actual Corner
 ### Distance from Witness Corner to Actual Corner



PROPERTY LOCATION

Locator:
 Silver One Resources (USA) Inc.
 1859 Whitney Mesa Dr.
 Henderson, NV 89014

Bearings reported in UTM Grid North (GN), Datum, 1983.



Location Map for CK 1-220 & 222-385
 Lode Claims
 Sheet 4 of 4

Silver One Resources (USA) Inc.
 1859 Whitney Mesa Dr.
 Henderson, NV 89014

CK_1-385_Claims_N83211R.dwg
 December 14, 2017
 Drawn By: G.I.S. Land Services
 Field Work By: T&T Exploration L.L.C.
 Datum: 1983 Projection: UTM Zone 11
 Units: Feet

| | | | | | |
|--------|--------|--------|--------|--------|--------|
| 19 | | 24 | | 30 | |
| CK 262 | CK 293 | CK 292 | CK 319 | CK 320 | |
| CK 264 | CK 295 | CK 294 | CK 321 | CK 322 | |
| CK 266 | CK 297 | CK 296 | CK 323 | CK 324 | |
| CK 268 | CK 299 | CK 298 | CK 325 | CK 326 | CK 352 |
| CK 269 | CK 301 | CK 300 | CK 327 | CK 328 | CK 353 |
| | CK 303 | CK 302 | CK 329 | CK 330 | CK 354 |
| | CK 305 | CK 304 | CK 331 | CK 332 | CK 355 |
| | CK 307 | CK 306 | CK 333 | CK 334 | CK 357 |
| | CK 309 | CK 308 | CK 335 | CK 336 | CK 359 |
| | CK 310 | CK 310 | CK 337 | CK 338 | CK 361 |
| | CK 311 | CK 311 | CK 339 | CK 340 | CK 363 |
| | CK 312 | CK 312 | CK 341 | CK 342 | CK 365 |
| | | | CK 343 | CK 344 | CK 367 |
| | | | CK 345 | CK 346 | CK 369 |
| | | | CK 347 | CK 348 | CK 371 |
| | | | CK 349 | CK 350 | CK 373 |
| | | | CK 351 | CK 351 | CK 375 |
| | | | CK 353 | CK 354 | CK 377 |
| | | | CK 355 | CK 356 | CK 379 |
| | | | CK 357 | CK 358 | CK 381 |
| | | | CK 359 | CK 360 | CK 383 |
| | | | CK 361 | CK 362 | CK 385 |
| | | | CK 363 | CK 364 | CK 387 |
| | | | CK 365 | CK 366 | CK 389 |
| | | | CK 367 | CK 368 | CK 391 |
| | | | CK 369 | CK 370 | CK 393 |
| | | | CK 371 | CK 372 | CK 395 |
| | | | CK 373 | CK 374 | CK 397 |
| | | | CK 375 | CK 376 | CK 399 |
| | | | CK 377 | CK 378 | CK 401 |
| | | | CK 379 | CK 380 | CK 403 |
| | | | CK 381 | CK 382 | CK 405 |
| | | | CK 383 | CK 384 | CK 407 |
| | | | CK 385 | CK 386 | CK 409 |
| | | | CK 387 | CK 388 | CK 411 |
| | | | CK 389 | CK 390 | CK 413 |
| | | | CK 391 | CK 392 | CK 415 |
| | | | CK 393 | CK 394 | CK 417 |
| | | | CK 395 | CK 396 | CK 419 |
| | | | CK 397 | CK 398 | CK 421 |
| | | | CK 399 | CK 400 | CK 423 |
| | | | CK 401 | CK 402 | CK 425 |
| | | | CK 403 | CK 404 | CK 427 |
| | | | CK 405 | CK 406 | CK 429 |
| | | | CK 407 | CK 408 | CK 431 |
| | | | CK 409 | CK 410 | CK 433 |
| | | | CK 411 | CK 412 | CK 435 |
| | | | CK 413 | CK 414 | CK 437 |
| | | | CK 415 | CK 416 | CK 439 |
| | | | CK 417 | CK 418 | CK 441 |
| | | | CK 419 | CK 420 | CK 443 |
| | | | CK 421 | CK 422 | CK 445 |
| | | | CK 423 | CK 424 | CK 447 |
| | | | CK 425 | CK 426 | CK 449 |
| | | | CK 427 | CK 428 | CK 451 |
| | | | CK 429 | CK 430 | CK 453 |
| | | | CK 431 | CK 432 | CK 455 |
| | | | CK 433 | CK 434 | CK 457 |
| | | | CK 435 | CK 436 | CK 459 |
| | | | CK 437 | CK 438 | CK 461 |
| | | | CK 439 | CK 440 | CK 463 |
| | | | CK 441 | CK 442 | CK 465 |
| | | | CK 443 | CK 444 | CK 467 |
| | | | CK 445 | CK 446 | CK 469 |
| | | | CK 447 | CK 448 | CK 471 |
| | | | CK 449 | CK 450 | CK 473 |
| | | | CK 451 | CK 452 | CK 475 |
| | | | CK 453 | CK 454 | CK 477 |
| | | | CK 455 | CK 456 | CK 479 |
| | | | CK 457 | CK 458 | CK 481 |
| | | | CK 459 | CK 460 | CK 483 |
| | | | CK 461 | CK 462 | CK 485 |
| | | | CK 463 | CK 464 | CK 487 |
| | | | CK 465 | CK 466 | CK 489 |
| | | | CK 467 | CK 468 | CK 491 |
| | | | CK 469 | CK 470 | CK 493 |
| | | | CK 471 | CK 472 | CK 495 |
| | | | CK 473 | CK 474 | CK 497 |
| | | | CK 475 | CK 476 | CK 499 |
| | | | CK 477 | CK 478 | CK 501 |
| | | | CK 479 | CK 480 | CK 503 |
| | | | CK 481 | CK 482 | CK 505 |
| | | | CK 483 | CK 484 | CK 507 |
| | | | CK 485 | CK 486 | CK 509 |
| | | | CK 487 | CK 488 | CK 511 |
| | | | CK 489 | CK 490 | CK 513 |
| | | | CK 491 | CK 492 | CK 515 |
| | | | CK 493 | CK 494 | CK 517 |
| | | | CK 495 | CK 496 | CK 519 |
| | | | CK 497 | CK 498 | CK 521 |
| | | | CK 499 | CK 500 | CK 523 |
| | | | CK 501 | CK 502 | CK 525 |
| | | | CK 503 | CK 504 | CK 527 |
| | | | CK 505 | CK 506 | CK 529 |
| | | | CK 507 | CK 508 | CK 531 |
| | | | CK 509 | CK 510 | CK 533 |
| | | | CK 511 | CK 512 | CK 535 |
| | | | CK 513 | CK 514 | CK 537 |
| | | | CK 515 | CK 516 | CK 539 |
| | | | CK 517 | CK 518 | CK 541 |
| | | | CK 519 | CK 520 | CK 543 |
| | | | CK 521 | CK 522 | CK 545 |
| | | | CK 523 | CK 524 | CK 547 |
| | | | CK 525 | CK 526 | CK 549 |
| | | | CK 527 | CK 528 | CK 551 |
| | | | CK 529 | CK 530 | CK 553 |
| | | | CK 531 | CK 532 | CK 555 |
| | | | CK 533 | CK 534 | CK 557 |
| | | | CK 535 | CK 536 | CK 559 |
| | | | CK 537 | CK 538 | CK 561 |
| | | | CK 539 | CK 540 | CK 563 |
| | | | CK 541 | CK 542 | CK 565 |
| | | | CK 543 | CK 544 | CK 567 |
| | | | CK 545 | CK 546 | CK 569 |
| | | | CK 547 | CK 548 | CK 571 |
| | | | CK 549 | CK 550 | CK 573 |
| | | | CK 551 | CK 552 | CK 575 |
| | | | CK 553 | CK 554 | CK 577 |
| | | | CK 555 | CK 556 | CK 579 |
| | | | CK 557 | CK 558 | CK 581 |
| | | | CK 559 | CK 560 | CK 583 |
| | | | CK 561 | CK 562 | CK 585 |
| | | | CK 563 | CK 564 | CK 587 |
| | | | CK 565 | CK 566 | CK 589 |
| | | | CK 567 | CK 568 | CK 591 |
| | | | CK 569 | CK 570 | CK 593 |
| | | | CK 571 | CK 572 | CK 595 |
| | | | CK 573 | CK 574 | CK 597 |
| | | | CK 575 | CK 576 | CK 599 |
| | | | CK 577 | CK 578 | CK 601 |
| | | | CK 579 | CK 580 | CK 603 |
| | | | CK 581 | CK 582 | CK 605 |
| | | | CK 583 | CK 584 | CK 607 |
| | | | CK 585 | CK 586 | CK 609 |
| | | | CK 587 | CK 588 | CK 611 |
| | | | CK 589 | CK 590 | CK 613 |
| | | | CK 591 | CK 592 | CK 615 |
| | | | CK 593 | CK 594 | CK 617 |
| | | | CK 595 | CK 596 | CK 619 |
| | | | CK 597 | CK 598 | CK 621 |
| | | | CK 599 | CK 600 | CK 623 |
| | | | CK 601 | CK 602 | CK 625 |
| | | | CK 603 | CK 604 | CK 627 |
| | | | CK 605 | CK 606 | CK 629 |
| | | | CK 607 | CK 608 | CK 631 |
| | | | CK 609 | CK 610 | CK 633 |
| | | | CK 611 | CK 612 | CK 635 |
| | | | CK 613 | CK 614 | CK 637 |
| | | | CK 615 | CK 616 | CK 639 |
| | | | CK 617 | CK 618 | CK 641 |
| | | | CK 619 | CK 620 | CK 643 |
| | | | CK 621 | CK 622 | CK 645 |
| | | | CK 623 | CK 624 | CK 647 |
| | | | CK 625 | CK 626 | CK 649 |
| | | | CK 627 | CK 628 | CK 651 |
| | | | CK 629 | CK 630 | CK 653 |
| | | | CK 631 | CK 632 | CK 655 |
| | | | CK 633 | CK 634 | CK 657 |
| | | | CK 635 | CK 636 | CK 659 |
| | | | CK 637 | CK 638 | CK 661 |
| | | | CK 639 | CK 640 | CK 663 |
| | | | CK 641 | CK 642 | CK 665 |
| | | | CK 643 | CK 644 | CK 667 |
| | | | CK 645 | CK 646 | CK 669 |
| | | | CK 647 | CK 648 | CK 671 |
| | | | CK 649 | CK 650 | CK 673 |
| | | | CK 651 | CK 652 | CK 675 |
| | | | CK 653 | CK 654 | CK 677 |
| | | | CK 655 | CK 656 | CK 679 |
| | | | CK 657 | CK 658 | CK 681 |
| | | | CK 659 | CK 660 | CK 683 |
| | | | CK 661 | CK 662 | CK 685 |
| | | | CK 663 | CK 664 | CK 687 |
| | | | CK 665 | CK 666 | CK 689 |
| | | | CK 667 | CK 668 | CK 691 |
| | | | CK 669 | CK 670 | CK 693 |
| | | | CK 671 | CK 672 | CK 695 |
| | | | CK 673 | CK 674 | CK 697 |
| | | | CK 675 | CK 676 | CK 699 |
| | | | CK 677 | CK 678 | CK 701 |
| | | | CK 679 | CK 680 | CK 703 |
| | | | CK 681 | CK 682 | CK 705 |
| | | | CK 683 | CK 684 | CK 707 |
| | | | CK 685 | CK 686 | CK 709 |
| | | | CK 687 | CK 688 | CK 711 |
| | | | CK 689 | CK 690 | CK 713 |
| | | | CK 691 | CK 692 | CK 715 |
| | | | CK 693 | CK 694 | CK 717 |
| | | | CK 695 | CK 696 | CK 719 |
| | | | CK 697 | CK 698 | CK |