

PART SECTIONS 28 & 33, T1S, R67E, MDM
STAND-ALONE MINERAL PATENT RETRACEMENT & RESTORATION
AND GEODETIC CONTROL DIAGRAM
SCALE 1" = 200'

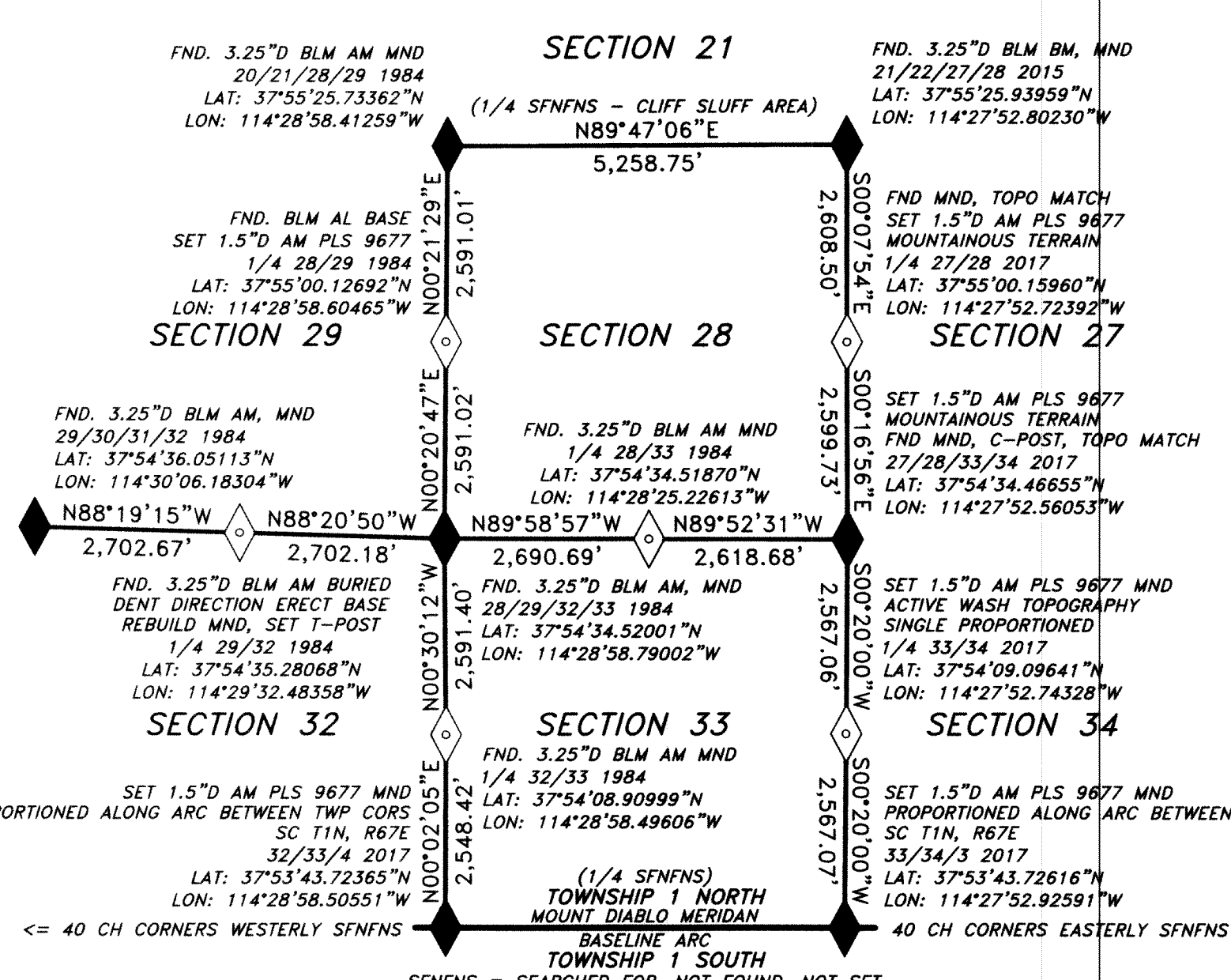
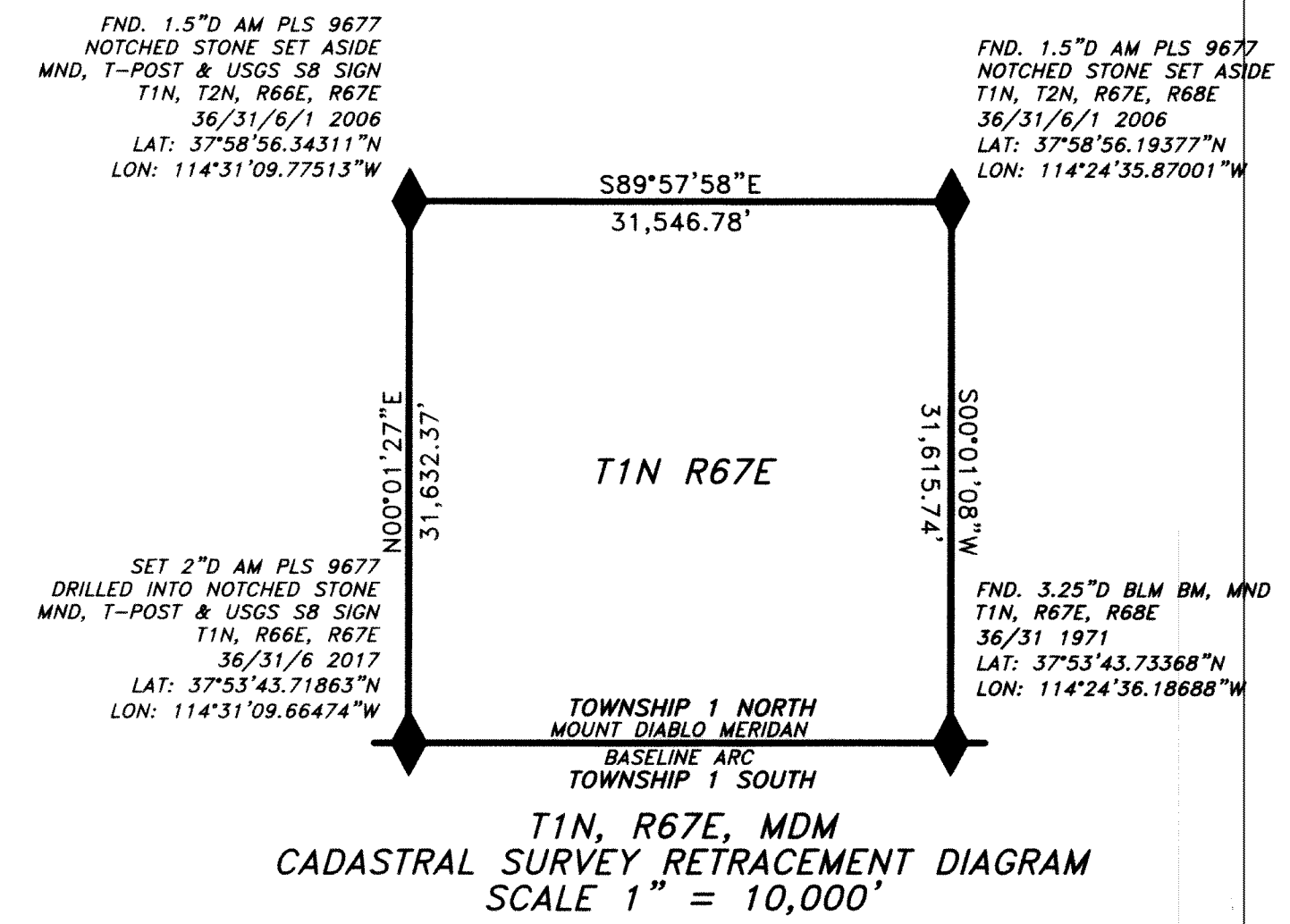
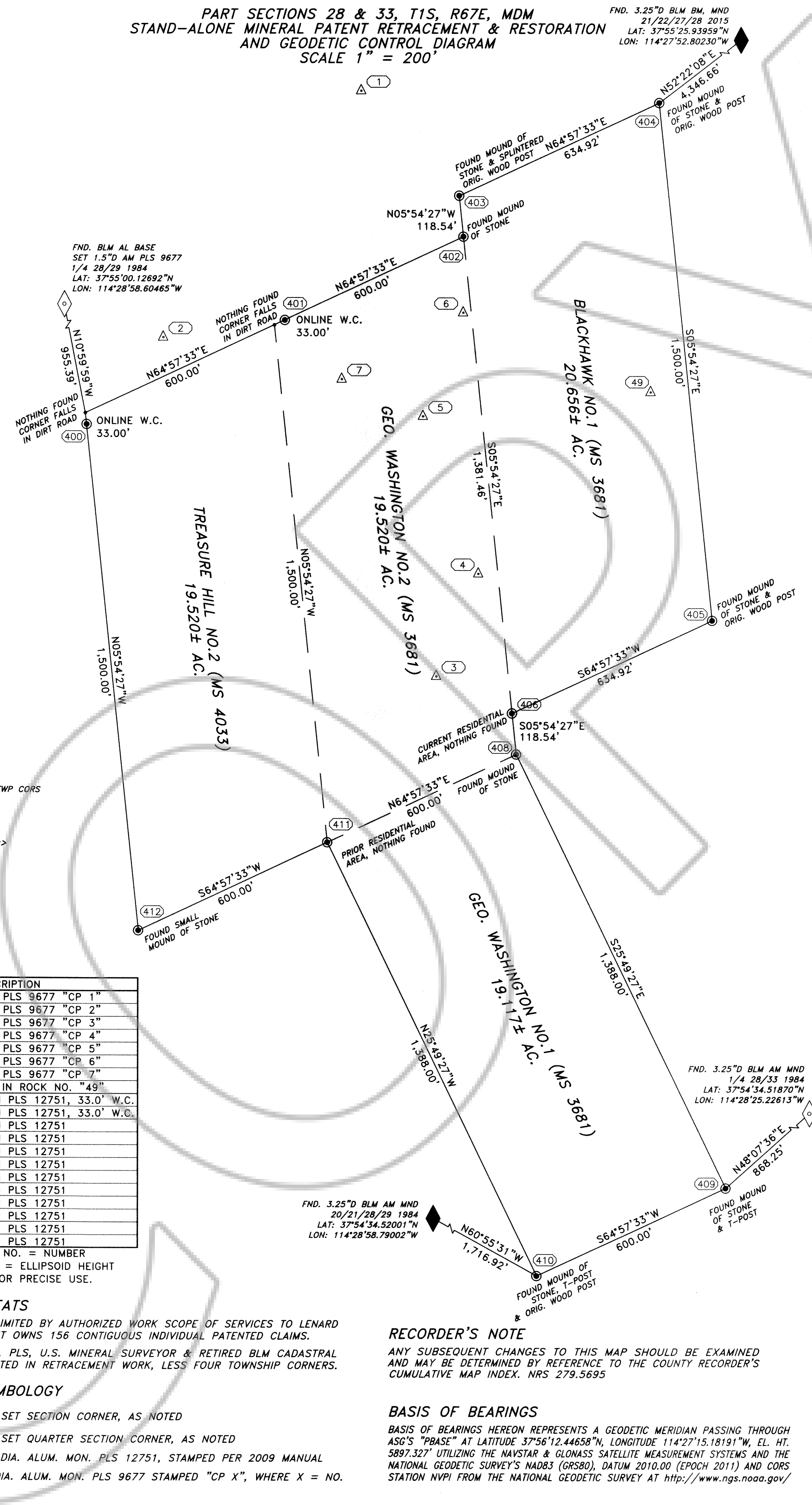
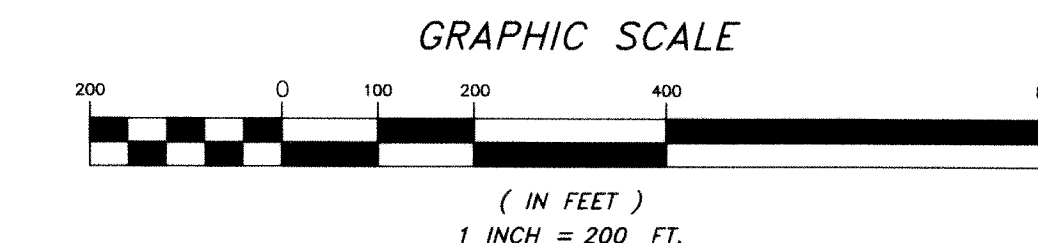
CASELTON HEIGHTS
CADASTRAL, USMS PATENT & CONTROL
RECORD OF SURVEY
FOR
LENARD SMITH LAND SURVEY

DOC # 0152793
10/30/2017 06:58 AM
Official Record
Recording requested by
TJM WOLF
Lincoln County - NV
Leslie Baucher - Recorder
Fee: \$27.00 Page 1 of 1
RPT: Recorded By: RK
Book: D Page: 0249

PORTIONS OF SECTIONS 29, 28, 32 & 33
AND SHOWN PATENTED MINING CLAIMS
TOWNSHIP 01 NORTH, RANGE 67 EAST

MINERAL PATENT
LAND SURFACE TABULATIONS

PATENT SURVEY NAME	AREA
BLACKHAWK NO. 1	20.656± AC.
GEO. WASHINGTON NO. 1	19.117± AC.
GEO. WASHINGTON NO. 2	19.520± AC.
TREASURE HILL NO. 2	19.520± AC.
TOTAL	78.813± AC.



GROUND AND GEODETIC CONTROL TABLE

NO.	NORTHING	EASTING	M.O.E.	LATITUDE	LONGITUDE	EL. HT.	DESCRIPTION
1	492674.823	492684.626	6316.196	37°55'00.04144"N	114°28'46.44327"W	6240.250	SET 1.5"DAM PLS 9677 "CP 1"
2	491964.100	492115.705	6060.012	37°54'53.01570"N	114°28'53.53813"W	5984.027	SET 1.5"DAM PLS 9677 "CP 2"
3	490986.772	492903.208	6026.153	37°54'43.35884"N	114°28'43.71085"W	5950.138	SET 1.5"DAM PLS 9677 "CP 3"
4	491282.077	493023.893	6044.454	37°54'46.27768"N	114°28'42.20632"W	5968.448	SET 1.5"DAM PLS 9677 "CP 4"
5	491736.091	492863.863	6061.130	37°54'50.76433"N	114°28'44.20413"W	5985.137	SET 1.5"DAM PLS 9677 "CP 5"
6	492034.854	492979.249	6081.379	37°54'53.71734"N	114°28'42.76568"W	6005.395	SET 1.5"DAM PLS 9677 "CP 6"
7	491843.589	492629.848	6062.897	37°54'51.82612"N	114°28'47.12380"W	5986.908	SET 1.5"DAM PLS 9677 "CP 7"
49	491807.055	493519.059	6232.647	37°54'51.46731"N	114°28'36.03088"W	6156.656	FND HEX BIT IN ROCK NO. "49"
400	491713.090	491895.478	6007.61	37°54'50.53429"N	114°28'56.28450"W	4924.007	SET 3.25"DAM PLS 12751, 33.0' W.C.
401	492013.700	492465.284	6046.53	37°54'53.50689"N	114°28'49.17731"W	4924.016	SET 3.25"DAM PLS 12751, 33.0' W.C.
402	492253.830	492979.291	6086.52	37°54'55.88149"N	114°28'42.76588"W	4924.022	SET 3.25"DAM PLS 12751
403	492371.738	492967.090	6117.62	37°54'57.04676"N	114°28'42.91846"W	4924.026	SET 3.25"DAM PLS 12751
404	492640.475	493542.329	6123.16	37°54'59.70414"N	114°28'35.74308"W	4924.032	SET 3.25"DAM PLS 12751
405	491148.440	493696.711	6056.32	37°54'44.95857"N	114°28'33.81276"W	4923.989	SET 3.25"DAM PLS 12751
406	490879.703	493121.473	6004.33	37°54'42.30122"N	114°28'40.98776"W	4923.981	SET 3.25"DAM PLS 12751
408	490761.795	493133.673	5999.27	37°54'41.13596"N	114°28'40.83520"W	4923.978	SET 3.25"DAM PLS 12751
409	489512.406	493738.299	5970.55	37°54'28.78957"N	114°28'33.28923"W	4923.931	SET 3.25"DAM PLS 12751
410	489258.448	493194.694	5943.91	37°54'26.27837"N	114°28'40.06925"W	4923.923	SET 3.25"DAM PLS 12751
411	490507.837	492590.068	5975.12	37°54'38.62464"N	114°28'47.61546"W	4923.970	SET 3.25"DAM PLS 12751
412	490253.879	492046.464	5943.99	37°54'36.11321"N	114°28'54.39560"W	4923.962	SET 3.25"DAM PLS 12751

AM = ALUMINUM MONUMENT; BM = BRASS MONUMENT; USMS = U.S. MINERAL SURVEY; COR = CORNER; NO. = NUMBER
PLS = PROFESSIONAL LAND SURVEYOR; DAM/DBM = DIAMETER ALUMINUM OR BRASS MONUMENT; EL. HT. = ELLIPSOID HEIGHT
M.O.E. = MODELED ORTHOMETRIC ELEVATION BASED UPON NGS' GEOID 12A - CAUTION: NOT INTENDED FOR PRECISE USE.

- REFERENCES**
- NEVADA REVISED STATUTES, CHAPTER 278, 452, 625, AND NEVADA ADMINISTRATIVE CODE 625.
 - MERGER & RESUBDIVISION PARCEL MAP, LC DOC. NO. 128760.
 - CORNER RECORDS FOR T1& 2N, R67E, AND EXTERIOR TOWNSHIP FILED AS A RESULT OF ADJACENT TOWNSHIP RETRACEMENT, BOOK 297, PAGES 219-231.
 - NO TITLE REPORT WAS PROVIDED TO THE SURVEYOR FOR U.S. MINERAL SURVEY PATENTS; THIS DOCUMENT CANNOT BE RELIED UPON FOR TITLE OR FRACTIONAL OWNERSHIP DEFINITION.
 - PATENT FOOTPRINT DEFINITION: USA PATENT NO. 144752, U.S. MINERAL SURVEY 3681, & USA PATENT NO. 463517, U.S. MINERAL SURVEY 4033.
 - ORIGINAL CADASTRAL PLAT & FIELD NOTES, APPROVED MAY 1, 1873. DEPENDENT CADASTRAL RESURVEY & FIELD NOTES, APPROVED JAN 8, 1985. CADASTRAL MINERAL SURVEY CONNECTION SHEET FOR SECTION 28, T1N, R67E.

- NOTES & CAVEATS**
- PATENT SURVEY LIMITED BY AUTHORIZED WORK SCOPE OF SERVICES TO LENARD LAND SURVEY. CLIENT OWNS 156 CONTIGUOUS INDIVIDUAL PATENTED CLAIMS.
 - DON ACHENBACH, PLS, U.S. MINERAL SURVEYOR & RETIRED BLM CADASTRAL SURVEYOR PARTICIPATED IN RETRACEMENT WORK, LESS FOUR TOWNSHIP CORNERS.
- MONUMENT SYMBOLOGY**
- ◆ FOUND OR SET SECTION CORNER, AS NOTED
 - ◇ FOUND OR SET QUARTER SECTION CORNER, AS NOTED
 - SET 3.25" DIA. ALUM. MON. PLS 12751, STAMPED PER 2009 MANUAL
 - ⊗ SET 1.5" DIA. ALUM. MON. PLS 9677 STAMPED "CP X", WHERE X = NO.

RECORDER'S NOTE
ANY SUBSEQUENT CHANGES TO THIS MAP SHOULD BE EXAMINED AND MAY BE DETERMINED BY REFERENCE TO THE COUNTY RECORDER'S CUMULATIVE MAP INDEX. NRS 279.5695

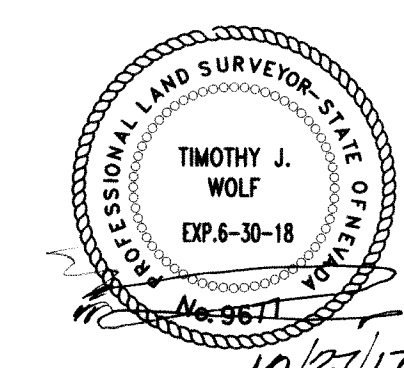
BASIS OF BEARINGS
BASIS OF BEARINGS HEREON REPRESENTS A GEODETIC MERIDIAN PASSING THROUGH ASG'S "PBASE" AT LATITUDE 37°56'12.44658"N, LONGITUDE 114°27'15.18191"W, EL. HT. 5897.327' UTILIZING THE NAVSTAR & GLOMSSAT SATELLITE MEASUREMENT SYSTEMS AND THE NATIONAL GEODETIC SURVEY'S NAD83 (GRS80), DATUM 2010.00 (EPOCH 2011) AND CORS STATION NVPI FROM THE NATIONAL GEODETIC SURVEY AT <http://www.ngs.noaa.gov/>

GEOSPATIAL SURVEYOR'S CERTIFICATE

I, TIMOTHY J. WOLF, A PROFESSIONAL LAND SURVEYOR, REGISTERED IN THE STATE OF NEVADA, ACTING AS AGENT FOR ARTISAN SURVEYING GROUP, A NEVADA LIMITED LIABILITY COMPANY, DO HEREBY CERTIFY THAT:

- THIS PLAT REPRESENTS THE RESULTS OF A SURVEY CONDUCTED BY ME AT THE INSTANCE OF LENARD SMITH, PLS, OF LENARD SMITH LAND SURVEY;
- THE LANDS SURVEYED LIE WITHIN TOWNSHIP 01 NORTH, RANGE 67 EAST, M.D.M., LINCOLN COUNTY, NEVADA, AND THE SURVEY WAS COMPLETED ON OCT. 20, 2017;
- THIS SURVEY AND MAP COMPLIES WITH APPLICABLE STATE STATUTES AND ANY LOCAL ORDINANCES IN EFFECT AS OF THE DAY OF ITS COMPLETION;
- THE MONUMENTS DEPICTED IN THIS SURVEY ARE OF THE CHARACTER SHOWN, OCCUPY THE POSITIONS INDICATED, AND ARE OF SUFFICIENT NUMBER AND DURABILITY;
- ALL NON-PATENT CORNERS WERE POSITIONED USING GNSS SATELLITE SYSTEM, STATIC TECHNIQUES, PRECISION CALIBRATED NGS-APPROVED HIXON FIXED-HEIGHT 4-POINT STABILIZED STRUTS;
- TERRAIN CONDITIONS VARY FROM GENTLE SLOPING & OPEN TO CONVOLUTED, STEEP, HEAVY FORESTED, MOUNTAINOUS, CLIFFED; FOLIAGE POPULATED WITH PINION, JUNIPER, MOHOGANY, PINE;
- GEODETIC CONTROL AND PATENT CORNER RESTORATIONS RECONSTRUCTED TO INCLUDE 5" TALL GREEN METAL T-POSTS WITH WHITE TOP, WHEN PRACTICABLE. GEODETIC CONTROL POSITIONS ALSO FORTIFIED WITH STONE COLLARS, WHEN OTHER THAN ROCK OUTCROPPING CONDITIONS PERMITTED.

TIMOTHY J. WOLF
PROFESSIONAL LAND SURVEYOR
NEVADA CERTIFICATE NO. 9677
AGENT, ARTISAN SURVEY GROUP



Art ARTISAN SURVEY GROUP, A NV LLC
"WHERE ART & MEASUREMENT SCIENCE CONVERGE"

P.O. BOX 396
PIOCHE, NEVADA 89043-0396
(775) 962-LAND (5263)

CONTRACT: LENARD SMITH, PLS
LOCATION: CALENTIE, NV, USA
NAME: CAS HGT ROS SHEET
REV. DATE: 10/27/17
DRAWN: P.R. WOLF, II
REVIEWED: T.J. WOLF, PLS, OTDS
H. SCALE: 1" = 200'
V. SCALE: N/A