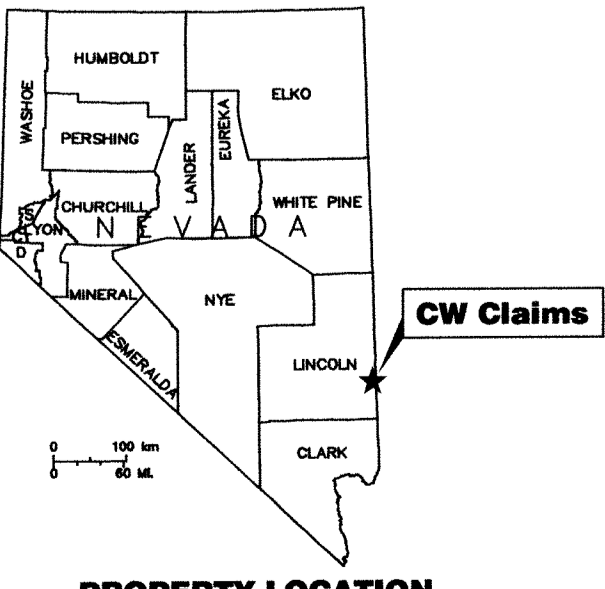
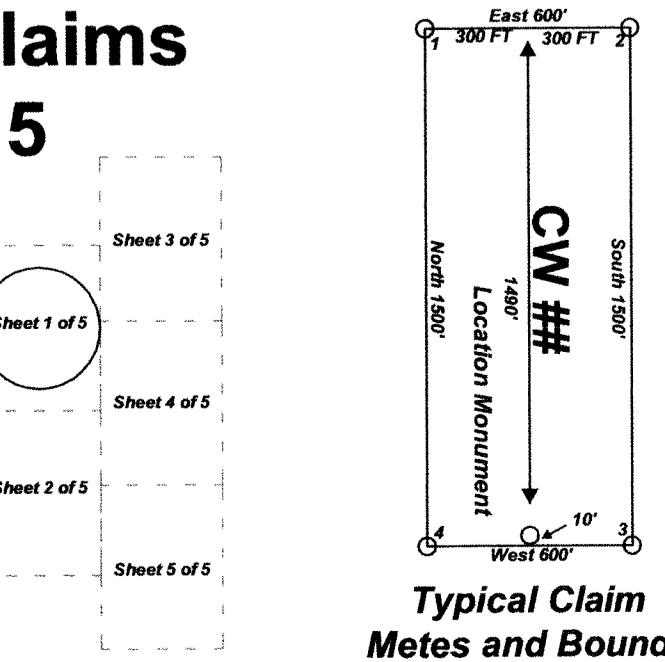


"CW" lode claims 79-224 were located on March 1, 2017 and "CW" lode claims 225-306 & 549-566 were located on March 2, 2017 and "CW" lode claims 307-408 were located on March 3, 2017 and "CW" lode claims 409-531 were located on March 4, 2017 and "CW" lode claims 532-548 & 567-570 were located on March 5, 2017 in Township 7 South, Range 70 East, Sections 12, 13 & 24 and in Township 7 South, Range 71 East, Sections 4-9, 16-21, & 28-33 and in Township 8 South, Range 71 East, Sections 4 & 5 in Lincoln County, Nevada, Mount Diablo Base & Meridian.

Notes:
 Location Monuments are set 10' from claim and end lines unless noted otherwise. All location and corner monuments are 2" X 2" X 4" wooden posts with scribed metal tags. All claims are 600' by 1500' unless noted otherwise.



**Location Map for CW 79-570
 Lode Mining Claims
 Sheet 1 of 5**



Scale 1:6000
 1" = 500'
 0 1500'
 FEET

Location Map for CW 79-570
 Lode Mining Claims

Tonkin Springs LLC
 2215 North 5th Street
 Elko, NV 89801

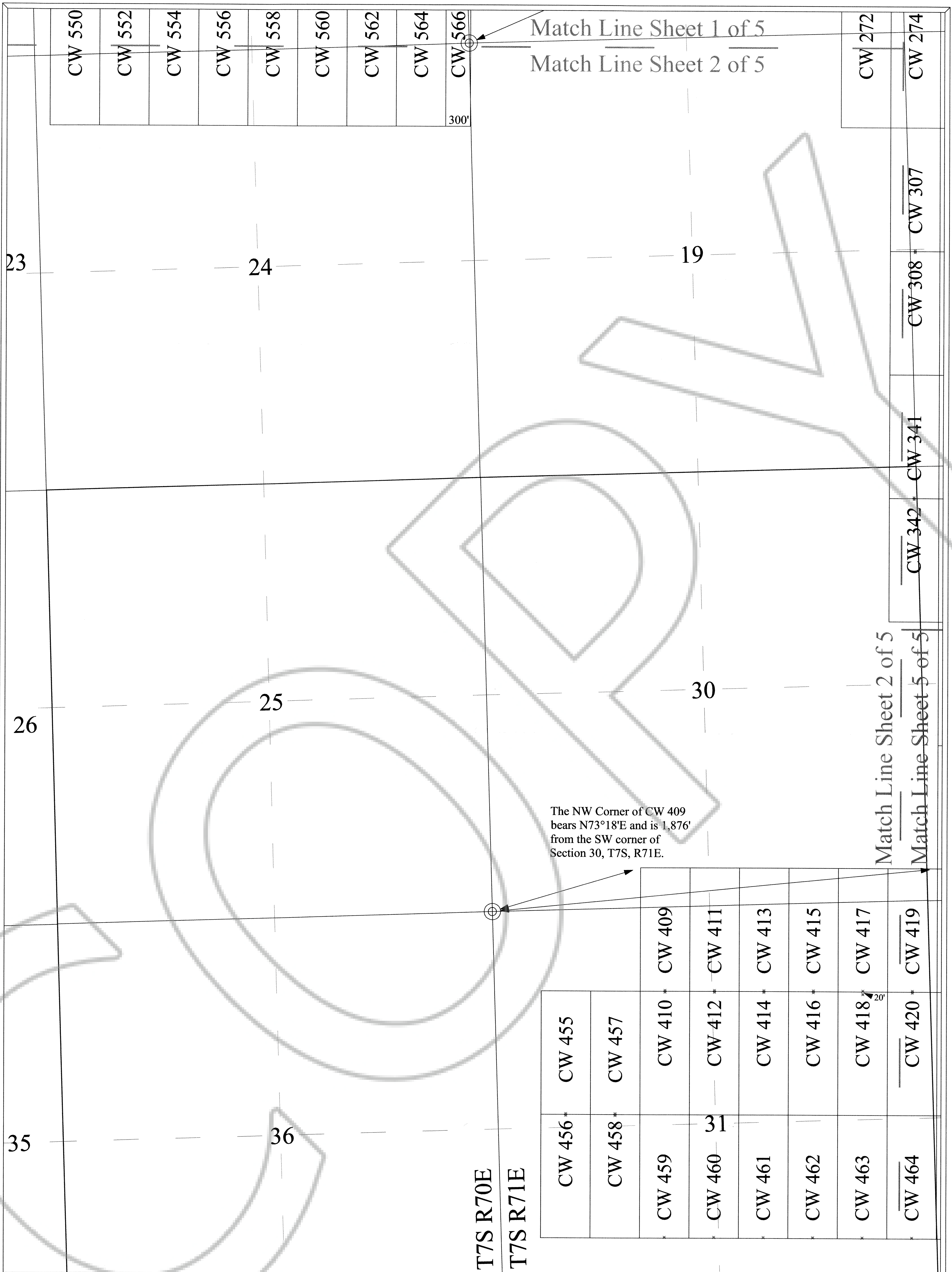
CW_79-570-Claims_N27211FLdwg
 April 19, 2017
 Drawn By: G.I.S. Land Services
 Field Work By: T&T Exploration
 Datum: 1927 Projection: UTM Zone 11
 Units: Feet

DOC # 0151703
 04/19/2017 10:43 AM
 CLERK OF COUNTY RECORDS
 Lincoln County - NV
 Leslie Boucher - Recorder
 8971 17386 00
 Recorder's Fee - \$6
 Book - 310 Page - 0008
 0151703

18
 The SW Corner of CW 236 bears N66°15'E and is 4,936' from the SW corner of Section 18, T7S, R71E.

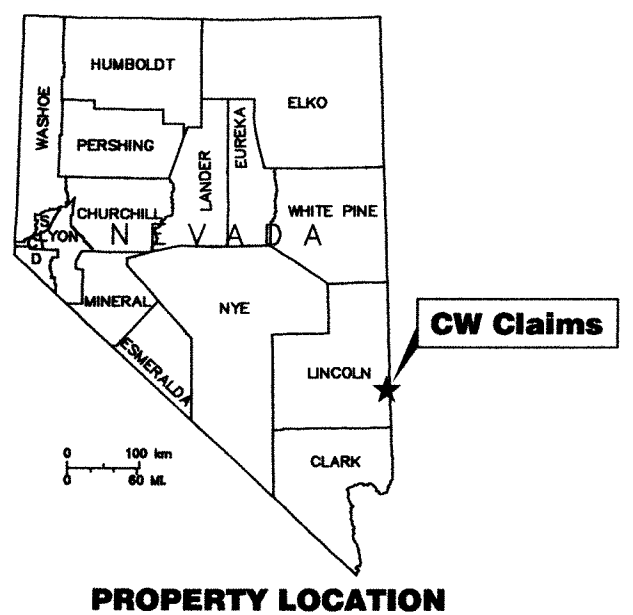
Match Line Sheet 1 of 5
 Match Line Sheet 2 of 5

The SW bears N6 from the Section 1



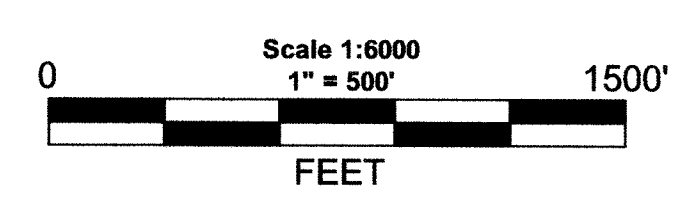
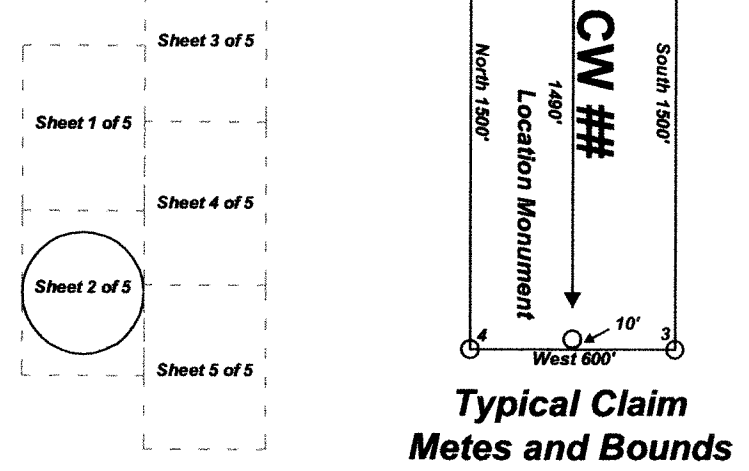
"CW" lode claims 79-224 were located on March 1, 2017 and "CW" lode claims 225-306 & 549-566 were located on March 2, 2017 and "CW" lode claims 307-408 were located on March 3, 2017 and "CW" lode claims 409-531 were located on March 4, 2017 and "CW" lode claims 532-548 & 567-570 were located on March 5, 2017 in Township 7 South, Range 70 East, Sections 12, 13 & 24 and in Township 7 South, Range 71 East, Sections 4-9, 16-21, & 28-33 and in Township 8 South, Range 71 East, Sections 4 & 5 in Lincoln County, Nevada, Mount Diablo Base & Meridian.

**Location Map for CW 79-570
Lode Mining Claims
Sheet 2 of 5**



Notes:
Location Monuments are set 10' from claim end lines unless noted otherwise. All location and corner monuments are 2" X 2" X 4' wooden posts with scribed metal tags. All claims are 600' by 1500' unless noted otherwise.

Locator:
Tonkin Springs LLC
2215 North 5th Street
Elko, NV 89801



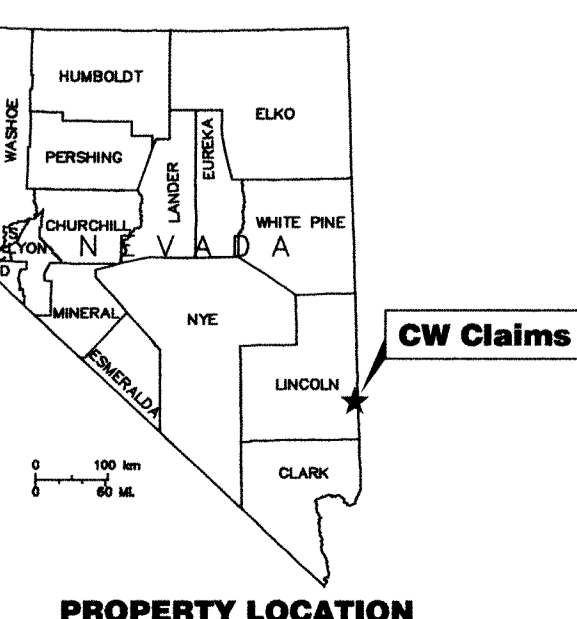
Location Map for CW 79-570
Lode Mining Claims
Tonkin Springs LLC
2215 North 5th Street
Elko, NV 89801
CW_79-570-Claims_N27211FLdwg
April 19, 2017
Drawn By: G.I.S. Land Services
Field Work By: T&T Exploration
Datum: 1927 Projection: UTM Zone 11
Units: Feet

0151700 Book 310 06/01/2017
Page 859 of 2105

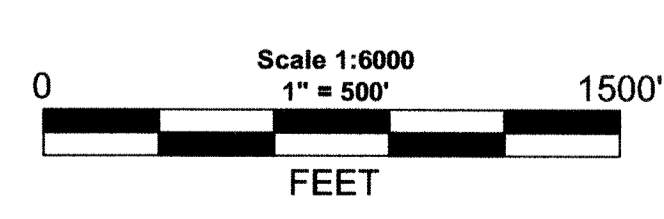
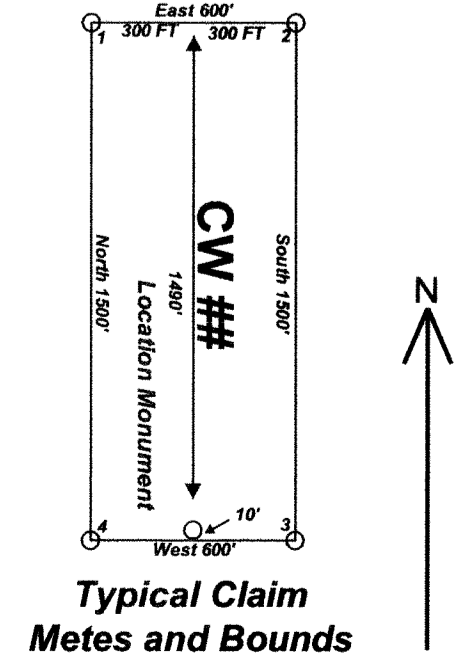
CW 198	CW 199	CW 200	CW 201	CW 202	CW 203	CW 204	CW 205	CW 206	CW 207	CW 208	CW 209	CW 210	CW 211	CW 212	CW 213	CW 214	CW 215	CW 216	CW 217	CW 218	CW 219	CW 220	CW 221	CW 222	CW 223	CW 224	CW 225	CW 226	CW 227	CW 228	CW 229	CW 230	CW 231	CW 232	CW 233	CW 234																																																																																																																																								
		CW 235	CW 236	CW 237	CW 238	CW 239	CW 240	CW 241	CW 242	CW 243	CW 244	CW 245	CW 246	CW 247	CW 248	CW 249	CW 250	CW 251	CW 252	CW 253	CW 254	CW 255	CW 256	CW 257	CW 258	CW 259	CW 260	CW 261	CW 262	CW 263	CW 264	CW 265	CW 266	CW 267	CW 268	CW 269	CW 270	CW 271	CW 272	CW 273	CW 274	CW 275	CW 276	CW 277	CW 278	CW 279	CW 280	CW 281	CW 282	CW 283	CW 284	CW 285	CW 286	CW 287	CW 288	CW 289	CW 290	CW 291	CW 292	CW 293	CW 294	CW 295	CW 296	CW 297	CW 298	CW 299	CW 300	CW 301	CW 302	CW 303	CW 304	CW 305	CW 306	CW 307	CW 308	CW 309	CW 310	CW 311	CW 312	CW 313	CW 314	CW 315	CW 316	CW 317	CW 318	CW 319	CW 320	CW 321	CW 322	CW 323	CW 324	CW 325	CW 326	CW 327	CW 328	CW 329	CW 330	CW 331	CW 332	CW 333	CW 334	CW 335	CW 336	CW 337	CW 338	CW 339	CW 340	CW 341	CW 342	CW 343	CW 344	CW 345	CW 346	CW 347	CW 348	CW 349	CW 350	CW 351	CW 352	CW 353	CW 354	CW 355	CW 356	CW 357	CW 358	CW 359	CW 360	CW 361	CW 362	CW 363	CW 364	CW 365	CW 366	CW 367	CW 368	CW 369	CW 370	CW 371	CW 372	CW 373	CW 374	CW 375	CW 376	CW 377	CW 378	CW 379	CW 380	CW 381	CW 382	CW 383	CW 384	CW 385	CW 386	CW 387	CW 388	CW 389	CW 390	CW 391	CW 392	CW 393	CW 394	CW 395	CW 396	CW 397	CW 398	CW 399	CW 400	CW 401	CW 402	CW 403	CW 404	CW 405

"CW" lode claims 79-224 were located on March 1, 2017 and "CW" lode claims 225-306 & 549-566 were located on March 2, 2017 and "CW" lode claims 307-408 were located on March 3, 2017 and "CW" lode claims 409-531 were located on March 4, 2017 and "CW" lode claims 532-548 & 567-570 were located on March 5, 2017 in Township 7 South, Range 70 East, Sections 12, 13 & 24 and in Township 7 South, Range 71 East, Sections 4-9, 16-21, & 28-33 and in Township 8 South, Range 71 East, Sections 4 & 5 in Lincoln County, Nevada, Mount Diablo Base & Meridian.

Notes:
Location Monuments are set 10' from claim end lines unless noted otherwise. All location and corner monuments are 2" X 2" X 4' wooden posts with scribed metal tags. All claims are 600' by 1500' unless noted otherwise.



**Location Map for CW 79-570
Lode Mining Claims
Sheet 4 of 5**



Location Map for CW 79-570 Lode Mining Claims	
Tonkin Springs LLC 2215 North 5th Street Elko, NV 89801	
CW_79-570-Claims_N27Z11Fdwg April 19, 2017	
Drawn By: G.I.S. Land Services	
Field Work By: T&T Exploration	
Datum: 1927 Projection: UTM Zone 11 Units: Feet	

05/01/2017
051708
Page 6 of 5

2 of 5

5 of 5

375

377

379

381

383

385

387

389

391

393

395

397

399

401

403

405

Match Line Sheet 4 of 5

Match Line Sheet 5 of 5

Match Line Sheet 2 of 5

Match Line Sheet 5 of 5

Match Line Sheet 4 of 5

Match Line Sheet 5 of 5

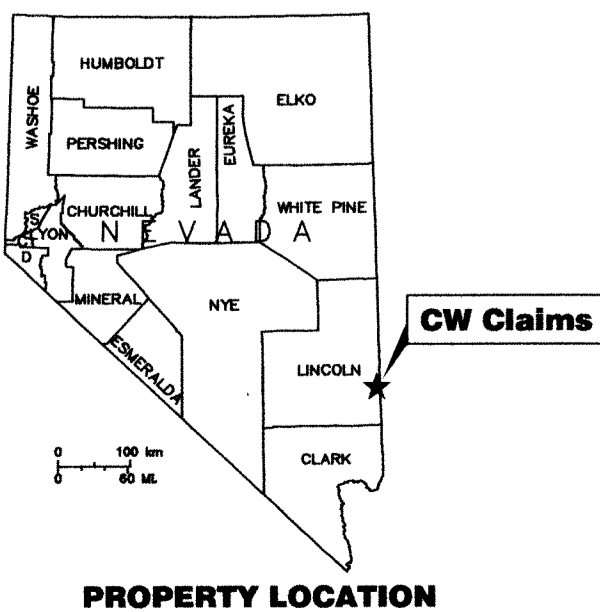
The NE Corner of CW 419 bears N84°18'E and is 5,424' from the SW corner of Section 30, T7S, R71E.

	CW 464	CW 420	CW 419	
	CW 465	CW 422	CW 421	CW 376
	CW 466	CW 424	CW 423	CW 377
	CW 467	CW 426	CW 425	CW 379
	CW 468	CW 428	CW 427	CW 381
	CW 470	CW 430	CW 429	CW 383
	CW 472	CW 432	CW 431	CW 385
	CW 474	CW 434	CW 433	CW 387
	CW 476	CW 436	CW 435	CW 389
	CW 478	CW 438	CW 437	CW 391
	CW 480	CW 440	CW 439	CW 393
	CW 482	CW 442	CW 441	CW 395
	CW 484	CW 444	CW 443	CW 397
	CW 486	CW 446	CW 445	CW 399
	CW 488	CW 448	CW 447	CW 401
	CW 490	CW 450	CW 449	CW 403
	CW 492	CW 452	CW 451	CW 405
	CW 494	CW 454	CW 453	CW 407
CW 520	CW 496	CW 497		
CW 521	CW 498	CW 499		
CW 522	CW 500	CW 501		
CW 523	CW 502	CW 503		
CW 524	CW 504	CW 505		
CW 525	CW 506	CW 507		
CW 526	CW 508	CW 509		
CW 527	CW 510	CW 511		
CW 528	CW 512	CW 513		
CW 529	CW 514	CW 515		
CW 530	CW 516	CW 517		
CW 531	CW 518	CW 519		

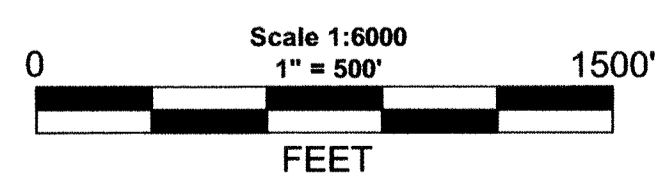
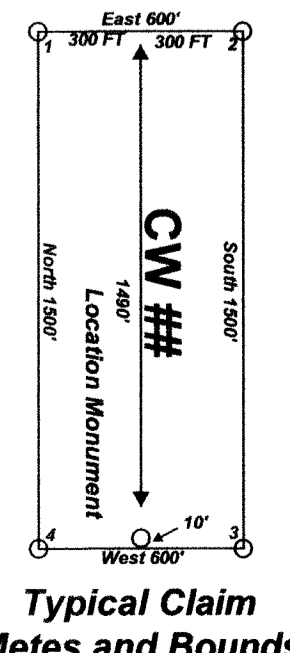
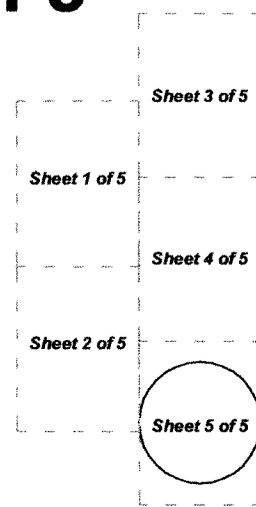
"CW" lode claims 79-224 were located on March 1, 2017 and
 "CW" lode claims 225-306 & 549-566 were located on March 2, 2017 and
 "CW" lode claims 307-408 were located on March 3, 2017 and
 "CW" lode claims 409-531 were located on March 4, 2017 and
 "CW" lode claims 532-548 & 567-570 were located on March 5, 2017 in
 Township 7 South, Range 70 East, Sections 12, 13 & 24 and in
 Township 7 South, Range 71 East, Sections 4-9, 16-21, & 28-33 and in
 Township 8 South, Range 71 East, Sections 4 & 5 in
 Lincoln County, Nevada, Mount Diablo Base & Meridian.

Locator:
 Tonkin Springs LLC
 2215 North 5th Street
 Elko, NV 89801

Notes:
 Location Monuments are set 10' from
 claim end lines unless noted otherwise.
 All location and corner monuments are
 2" X 2" X 4' wooden posts with scribed
 metal tags. All claims are 600' by 1500'
 unless noted otherwise.



Location Map for CW 79-570
 Lode Mining Claims
 Sheet 5 of 5



Location Map for CW 79-570
 Lode Mining Claims

Tonkin Springs LLC
 2215 North 5th Street
 Elko, NV 89801

CW 79-570-Claims_J27211FLdmg
 April 19, 2017
 Drawn By: G.I.S. Land Services
 Field Work By: T&T Exploration
 Datum: 1927 Projection: UTM Zone 11
 Units: Feet

05/01/2017 08:51:06 Page 602