

Official Record

Recording requested By
ARTISAN SURVEYING GROUPLincoln County - NV
Leslie Boucher - Recorder

Fee: \$15.00

Page 1 of 2

RPTT:

Recorded By: AE

Book- D Page-

0225

CORNER RECORD

SECTIONS: 22, T1N, R67E, MDM.



0151032

SURVEYOR'S CERTIFICATE

Sheet 1 of 2

I, Timothy J. Wolf, a Professional Land Surveyor, registered in the State of Nevada, as agent for Artisan Surveying Group, a NV Limited Liability Company, certify;

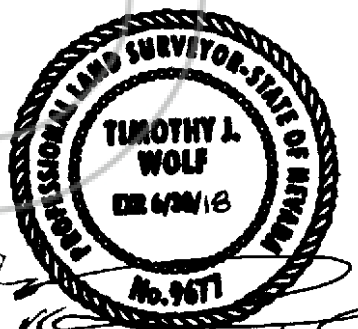
1) This Corner Record represents the establishment or restoration of a corner or accessory to a corner conducted under my direct supervision.

2) The monument or accessories perpetuated lie within the Section(s), Townships, and Ranges as noted above, as referenced to the Mount Diablo Meridian, Clark County, Nevada, and the establishment or restoration was completed in March, 2017.

3) This Corner Record has been filed pursuant to N.R.S. 329.140 or N.R.S. 329.150 and complies with the provisions of Nevada Administrative Code Section 329 and any local ordinances in effect on the date that the establishment or restoration was completed.

4) The monument or witness corner monument and accessories found are of the character shown, occupy the positions indicated and are of sufficient durability (latter solely if established by Artisan Surveying Group, a NV Limited Liability Company).

Timothy J. Wolf
Professional Land Surveyor
Nevada License No. 9677
Agent, Artisan Surveying Group



3/21/17

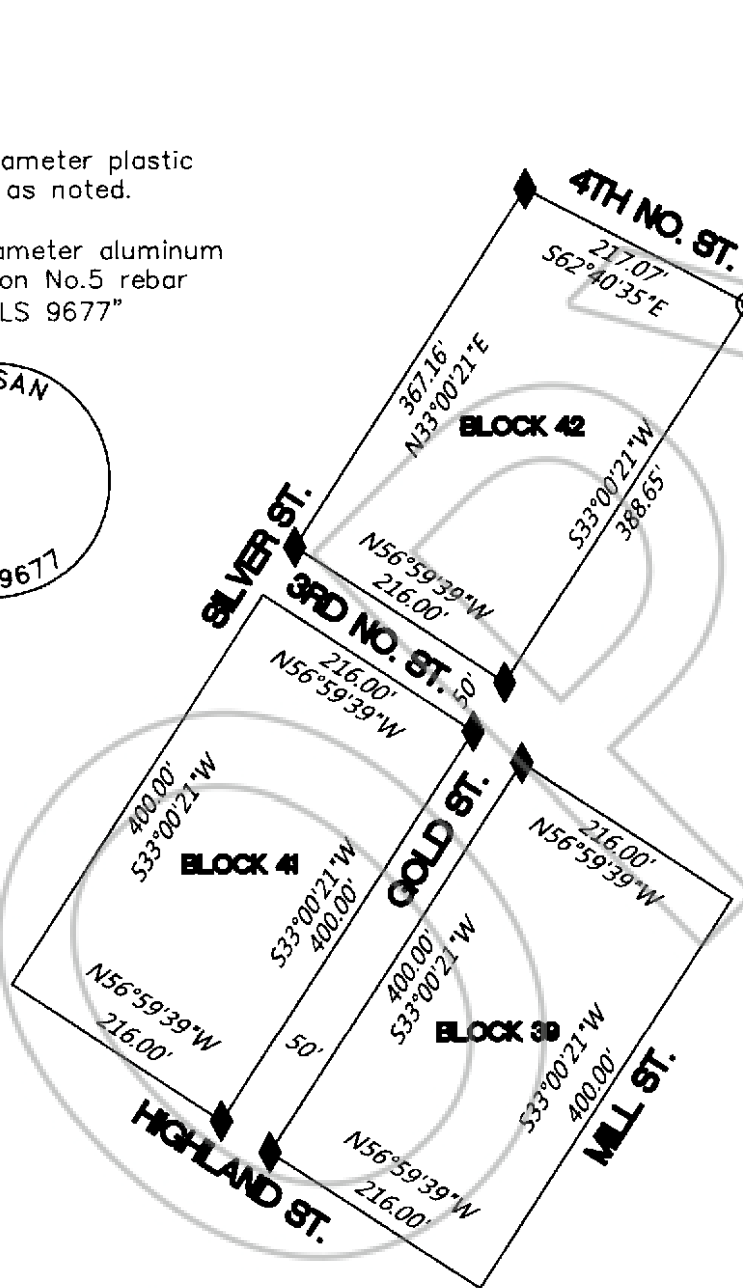
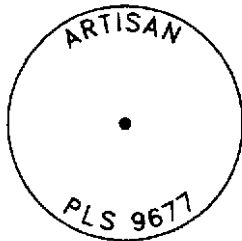
RECORDER, PLEASE RETURN TO:
Artisan Surveying Group
P.O. Box 396
Pioche, NV 89043
(775) 962-LAND
www.ArtisanSurveying.com



CORNER RECORD

● Found 1" diameter plastic monument, as noted.

◆ Set 1.5" diameter aluminum monument on No.5 rebar "ARTISAN PLS 9677"



Owens, PLS 2884
E0.72', S0.09'

ARTISAN
"WHERE ART & MEASUREMENT SCIENCE CONVERGE"
BULLOCH
NORTH

Pt. Sec. 22
T1N, R67E
M.D.M.
1"=150'

LEGEND

———— Exterior Block Boundary and Right of Way Line

REFERENCES

1. Pioche LC Doc. No.57; Supplement A Doc. No.61; Bulloch Map No. 100051; and Boundary Line Adjustment Maps Doc. No.s 110952 & 119166. Lincoln County Recorder's Office.
2. Donald and Ruthie Spaulding Deed Document No. 123626, Lincoln County Recorder's Office.

Artisan Surveying Group
"Where Art & Measurement Science Converge"
P.O. Box 396, Pioche, NV 89043-0396



www.ArtisanSurveying.com
TWolf@ArtisanSurveying.com
(775) 962-LAND (5263)