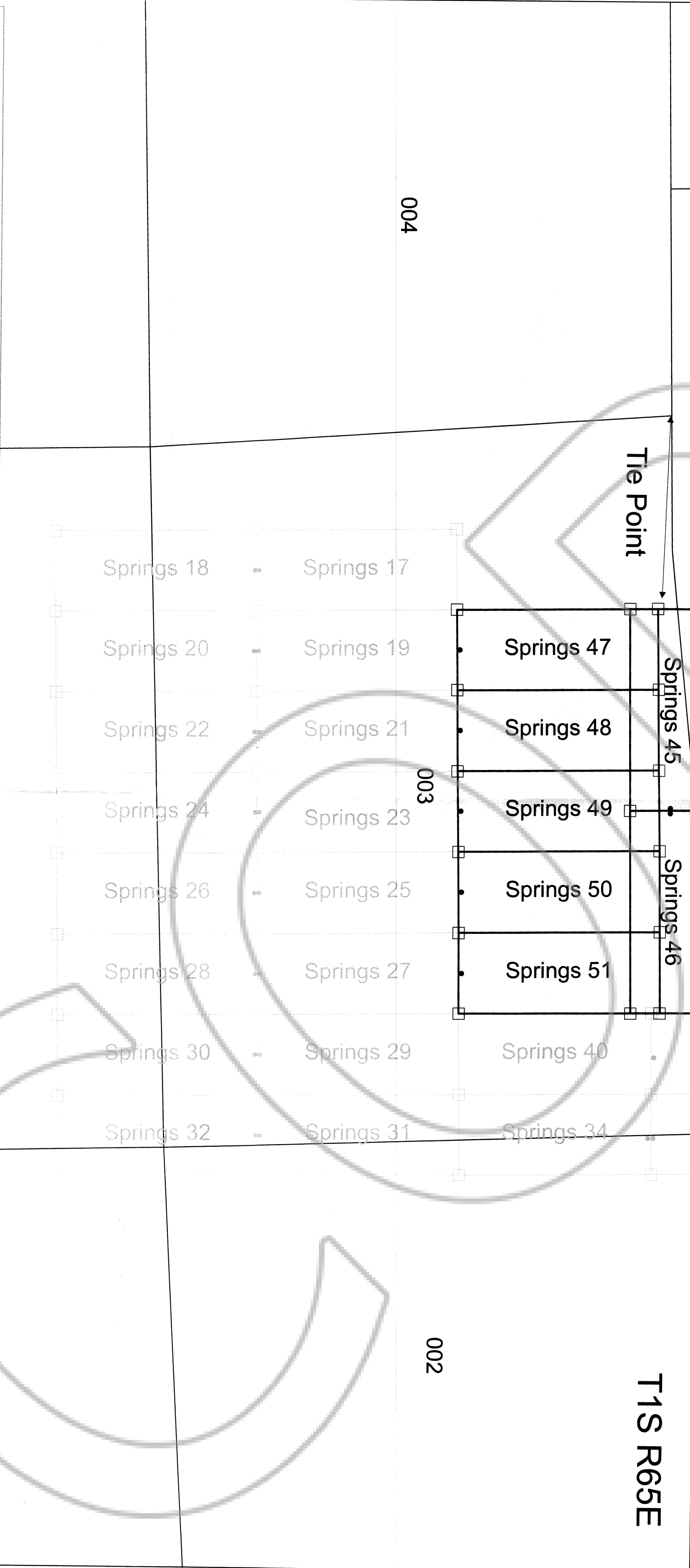
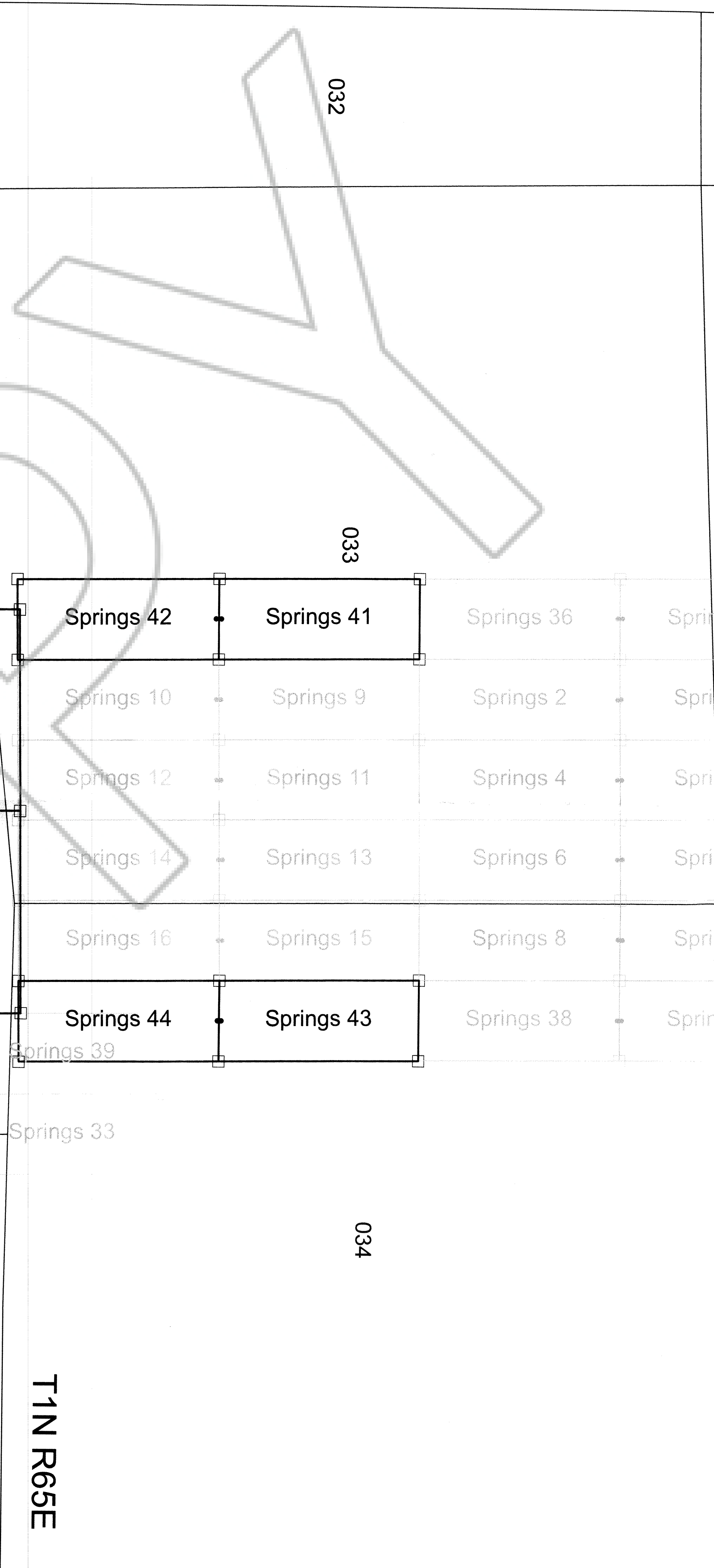


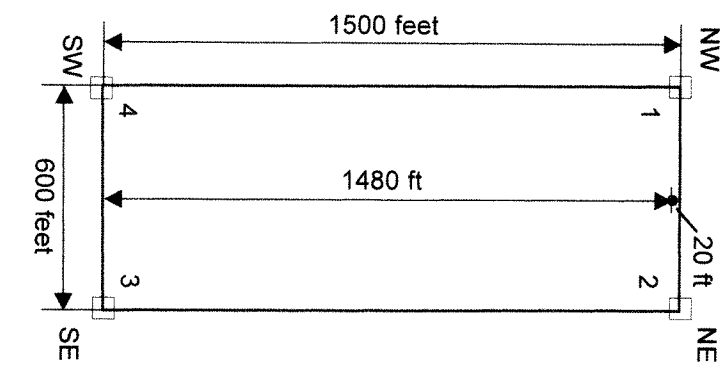
029

028

027

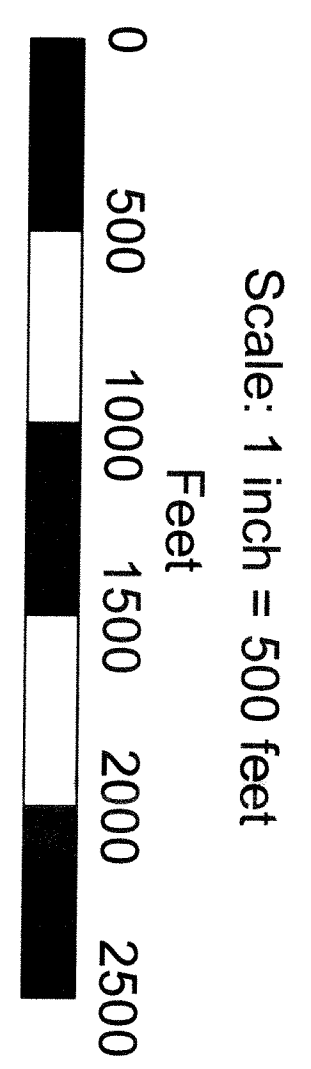


TYPICAL CLAIM



LEGEND

- claim corner
- location monument



NOTES: the point - NW corner of Springs 47 is approximately 1384 feet East and 137 feet South of common corner Sec. 3 (NW corner) and Sec. 4 (NE corner), T1S R65E, MDB&M.
 All monuments are 2 inch by 2 inch by 2 inch by 4 foot long wooden posts with a scribed metal tag.
 Location Date: 12 September 2016 - Springs 41-51

Springs 41-51 Claims
 Ely Springs District
 Lincoln County, Nevada
 Section 3, T1S R65E, MDB&M
 Sections 33 and 34, T1N R65E, MDB&M

Located by: Gregory T. Hill
 agent for:
Kinetic Gold (US) Inc.
 4790 Caughlin Pkwy. #410
 Reno, Nevada 89519

Date: November 14, 2016
 Drawn by: G. Hill