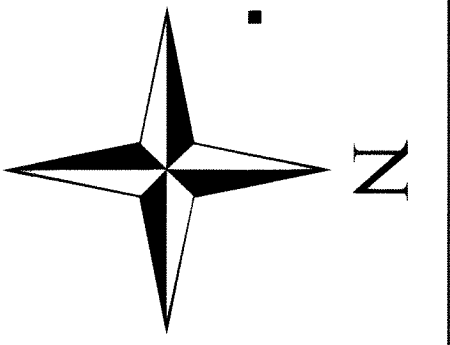


Location Dates:
 September 14, 2016: BR-1 - BR-38

Notes:
 BR location monuments are set 5 feet from endline along centerline of claim unless otherwise noted.
 BR-3 and BR-4 location monuments are set 50 ft from endline.
 All location monuments are 2"x2"x4" wooden posts with scribed metal tags.
 All claims are 600' x 1500' unless otherwise noted.
 Claims in gray are on other Map Sheet.

Logan Resources (USA) Ltd.

DOC # 0150542
 11/04/2016 02:56 PM
Official Record
 REGISTERED ELECTRONICALLY
 Lincoln County - NW
 Lastle Bucher, Recorder
 11/11/2016 08:00
 Recorder By: DE
 Book - 307 Page - 0217
 0150542



UTM NAD83

1:6,000 1 inch = 500 feet
 0 500 1,000 1,500 Feet

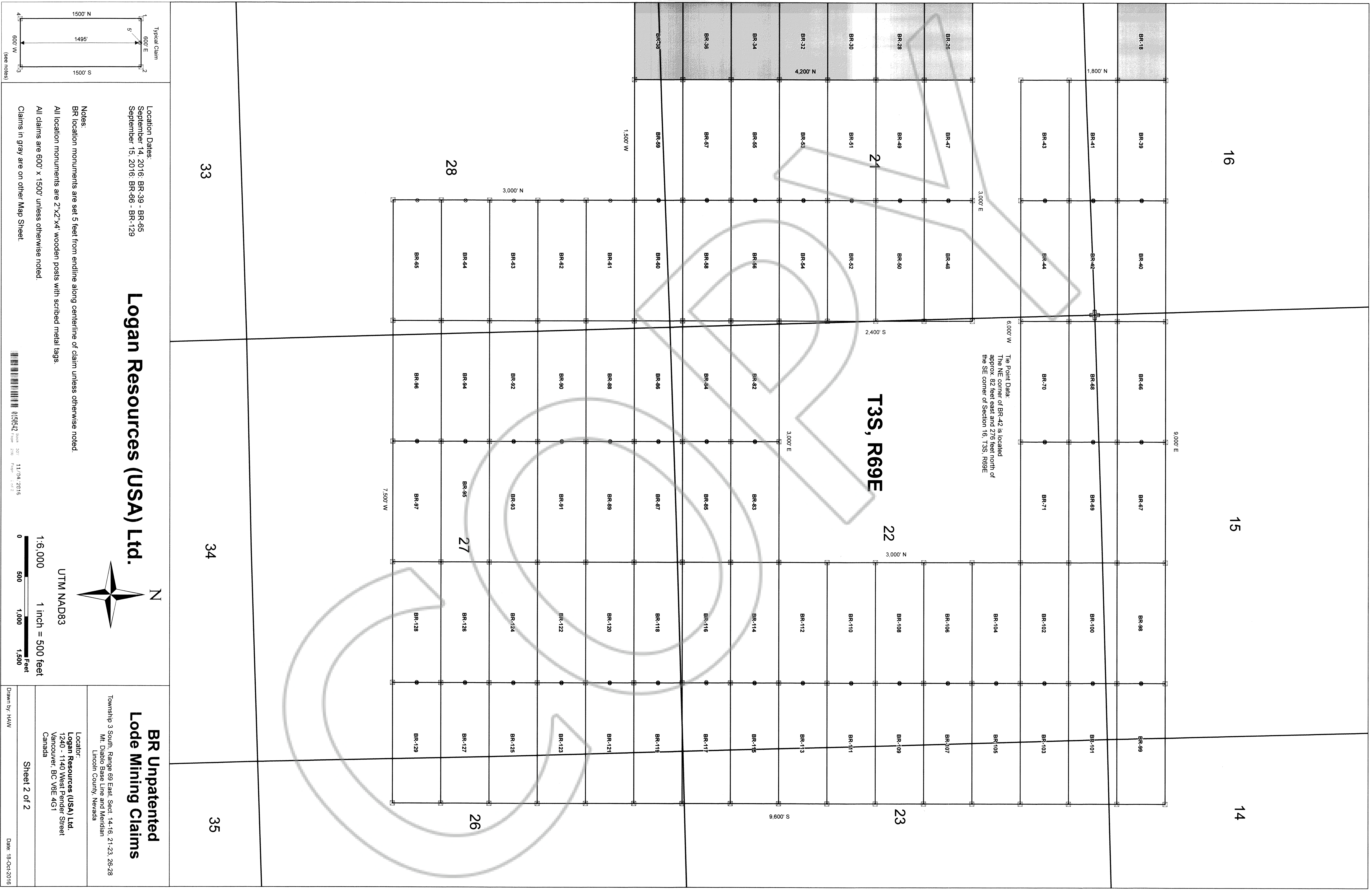
BR Unpatented Lode Mining Claims

Township 3 South, Range 69 East, Sect. 16-21, 28 & 29
 Mt. Diablo Base Line and Meridian
 Lincoln County, Nevada

Locator:
 Logan Resources (USA) Ltd.
 1240 - 1140 West Pender Street
 Vancouver, BC V6E 4G1
 Canada

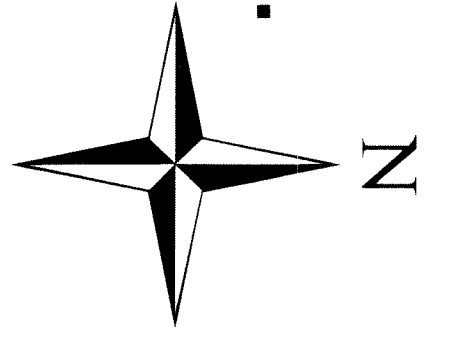
Sheet 1 of 2

Drawn By: HAW Date: 18-Oct-2016



Location Dates:
 September 14, 2016: BR-39 - BR-65
 September 15, 2016: BR-66 - BR-129

Logan Resources (USA) Ltd.



UTM NAD83

1:6,000 1 inch = 500 feet
 0 500 1,000 1,500 Feet

Notes:
 BR location monuments are set 5 feet from endline along centerline of claim unless otherwise noted.
 All location monuments are 2"x2"x4" wooden posts with scribed metal tags.
 All claims are 600' x 1500' unless otherwise noted.
 Claims in gray are on other Map Sheet!

BR Unpatented Lode Mining Claims

Township 3 South, Range 69 East, Sect. 14-16, 21-23, 26-28
 Mt. Diablo Base Line and Meridian
 Lincoln County, Nevada

Locator:
 Logan Resources (USA) Ltd.
 1240 - 1140 West Pender Street
 Vancouver, BC V6E 4G1
 Canada