

DOC # 0150410

10/31/2016 02:41 PM

Official Record

Recording requested by
CARLIN TREND MINING SERVICES

Lincoln County - NV

Leslie Boucher - Recorder

Fee: \$124.00 Page 1 of 1
RPTT: Recorded By: AE

Book- 307 Page- 0051



LOCATION DATE:
September 11, 2016 - GC 1-8

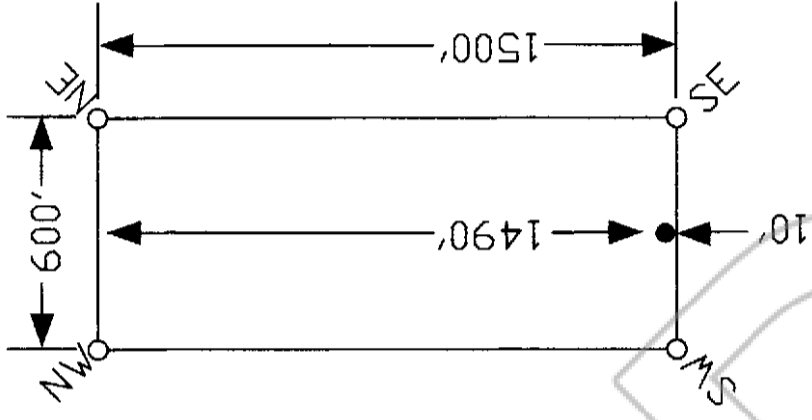
Agent who located claims:
Michael Power

Carlin Trend Mining Services
309 S. 5th Street
PH: (775) 778-0668 ELKO, NV 89801 FAX: (775) 778-4827

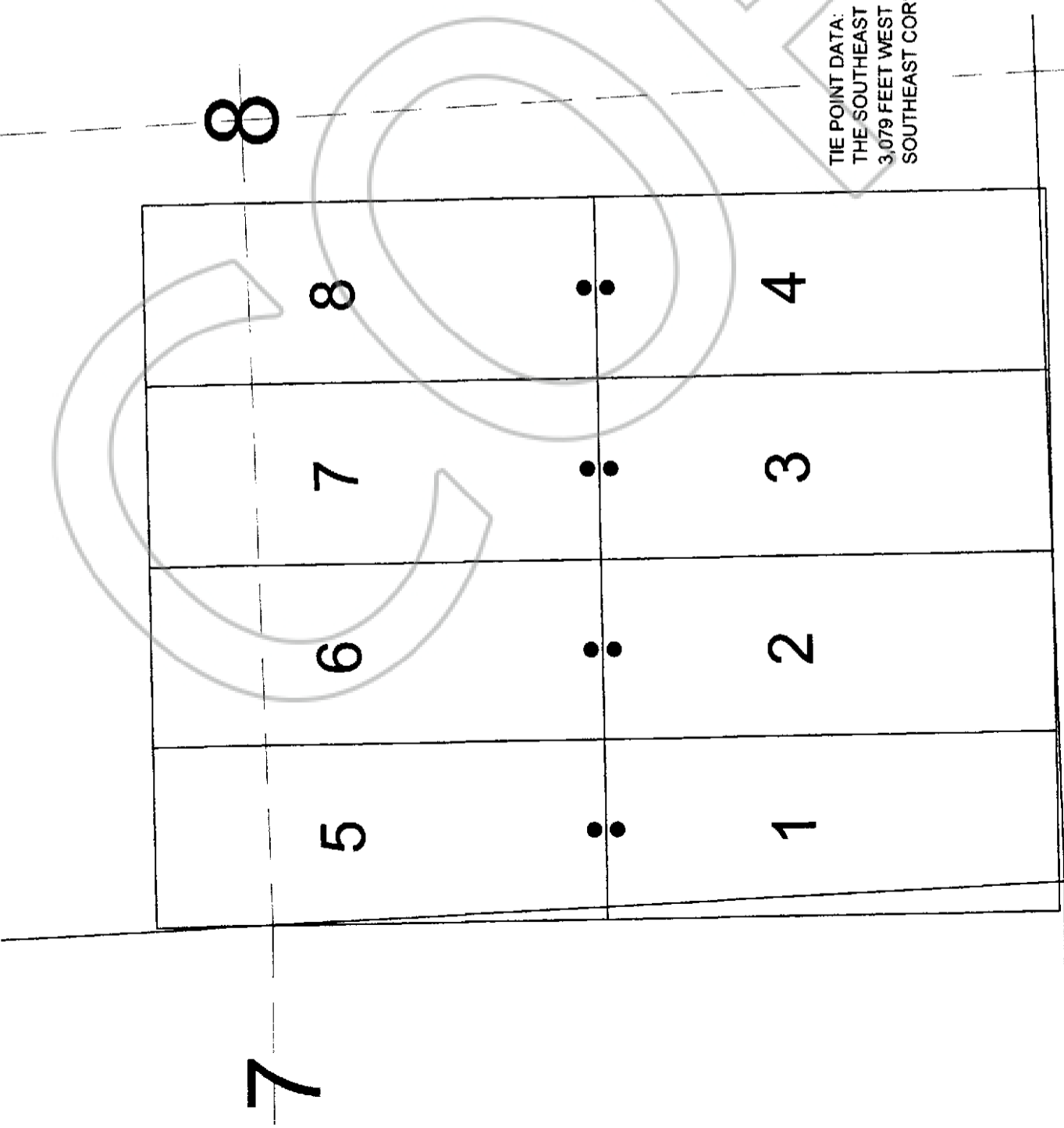
Manta Minerals Corp.
1901 Davis Avenue, Unit B-1, Juneau, Alaska 99801
GC 1-8 Lode Claims
T.3S., R.67E., Lincoln County, Nevada

October 2016

TYPICAL CLAIM



TIE POINT DATA:
THE SOUTHEAST CORNER OF GC 4 LIES APPROXIMATELY
3,079 FEET WEST AND 130 FEET SOUTH OF THE SURVEYED
SOUTHEAST CORNER OF SECTION 8, T.3S., R.67E., M.D.B.M.



NOTES:
LOCATION MONUMENTS SET 10' FROM CLAIM END CENTERLINES
UNLESS NOTED ON MAP. ALL LOCATION MONUMENTS AND CLAIM
POSTS ARE 2"x2"x4" WOODEN STAKES.