

26	GST 138	GST 103	GST 102	GST 67	23	GST 66
	GST 139	GST 105	GST 104	GST 69	*	GST 68
	GST 140	GST 107	GST 106	GST 71	*	GST 70
	GST 141	GST 109	GST 108	GST 73	*	GST 72
	GST 142	GST 111	GST 110	GST 75	*	GST 74
25	GST 143	GST 113	GST 112	GST 77	24	GST 76
	GST 144	GST 115	GST 114	GST 79	*	GST 78
	GST 145	GST 117	GST 116	GST 81	*	GST 80
		GST 119	GST 118	GST 83	*	GST 82
		GST 121	GST 120	GST 85	*	GST 84
		GST 123	GST 122	GST 87	*	GST 86
		GST 125	GST 124	GST 89	*	GST 88
		GST 127	GST 126	GST 91	*	GST 90
		GST 129	GST 128	GST 93	*	GST 92
		GST 131	GST 130	GST 95	19	GST 94
		GST 133	GST 132	GST 97	*	GST 96
		GST 135	GST 134	GST 99	*	GST 98
		GST 137	GST 136	GST 101	*	GST 100

The SW Corner of GST 139 bears N02°09'W and is 7,482' from the SE corner of Section 35 T7S R70E.

Match Line Sheet 1 of 2
Match Line Sheet 2 of 2

GST 146
GST 148
GST 150

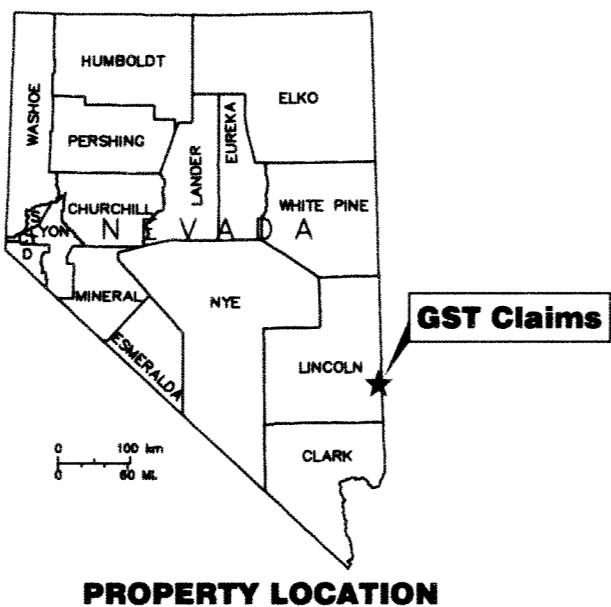
The SW Corner of GST 148 bears S88°07'W and is 283.5' from the SE corner of Section 35 T7S R70E.

T7S R70E

T7S R70E
T7S R71E

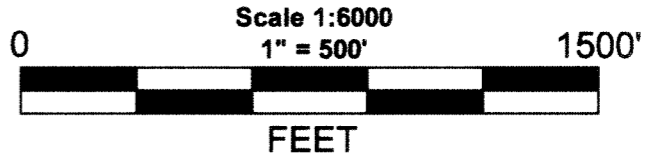
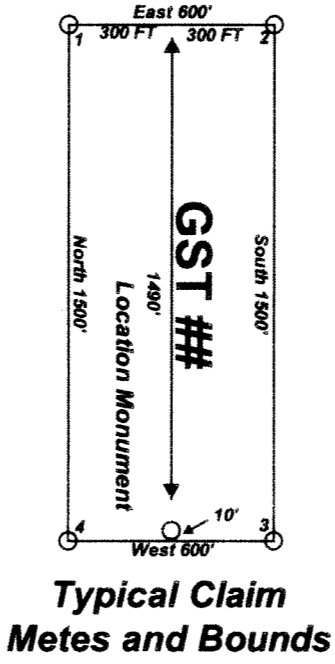
T7S R71E
T8S R71E

"GST" lode claims 102-145 were located on May 9, 2016 and "GST" lode claims 66-101 & 146-151 were located on May 10, 2016 in Township 7 South, Range 70 East, Sections 23-26 & 35-36 and in Township 7 South, Range 71 East, Sections 19&30 and in Township 8 South, Range 70 East, Sections 1 & 2 in Lincoln County, Nevada.



Notes:
Location Monuments are set 10' from claim end lines unless noted otherwise.
All location and corner monuments are 2" X 2" X 4' wooden posts with scribed metal tags. All claims are 600' by 1500' unless noted otherwise.

Location Map for GST 66-151
Lode Mining Claims
Sheet 1 of 2



Location Map for GST 66-151 Lode Mining Claims
Tonkin Springs LLC 2215 North 5th Street Elko, NV 89801
GST_66-151-Claims_N27Z11FLdwg May 0, 2016
Drawn By: G.I.S. Land Services Surveyed By: T&T Exploration L.L.C. Datum: 1927 Projection: UTM Zone 11 Units: Feet

DOC # 0149770
05/27/2016 04:16 PM
Official Record
Recording requested by
TONKIN SPRINGS LLC
Lincoln County - NV
Leslie Boucher - Recorder
Fee \$1,294.00 Page 1 of 2
SPT Recorded By: RE
Book- 304 Page- 0376
0149770

Locator:
Tonkin Springs LLC
2215 North 5th Street
Elko, NV 89801

26	GST 138	GST 103	GST 102
	GST 139	GST 105	GST 104
	GST 140	GST 107	GST 106
	GST 141	GST 109	GST 108
	GST 142	GST 111	GST 110
25	GST 143	GST 113	GST 112
	GST 144	GST 115	GST 114
	GST 145	GST 117	GST 116
		GST 119	GST 118
		GST 121	GST 120
		GST 123	GST 122
		GST 125	GST 124
		GST 127	GST 126
		GST 129	GST 128
		GST 131	GST 130
		GST 133	GST 132
		GST 135	GST 134
		GST 137	GST 136

The SW Corner of GST 139 bears N02°09'W and is 7,482' from the SE corner of Section 35 T7S R70E.

Match Line Sheet 1 of 2
Match Line Sheet 2 of 2

GST 146
GST 148
GST 150
GST 147
GST 149
GST 151

The SW Corner of GST 148 bears S88°07'W and is 283.5' from the SE corner of Section 35 T7S R70E.

T7S R70E
T8S R70E

T7S R70E
T7S R71E

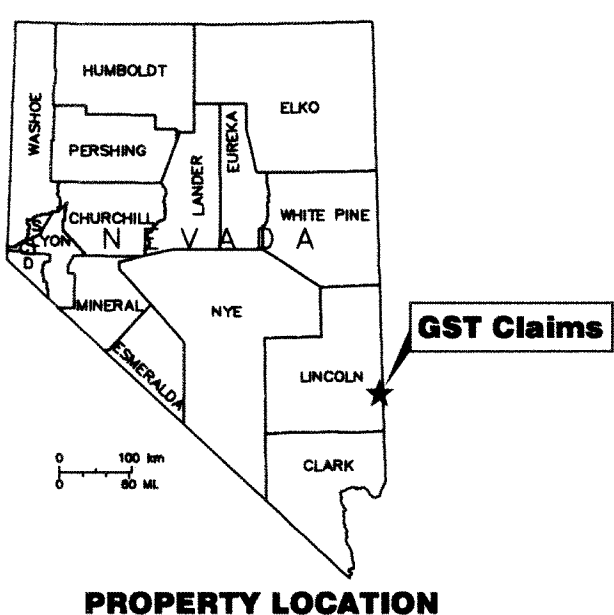
T7S R71E
T8S R71E

T8S R70E
T8S R71E

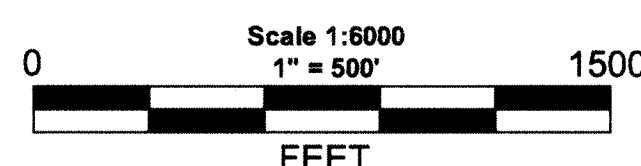
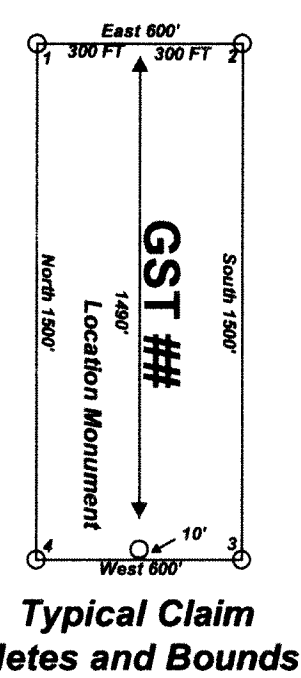
"GST" lode claims 102-145 were located on May 9, 2016 and "GST" lode claims 66-101 & 146-151 were located on May 10, 2016 in Township 7 South, Range 70 East, Sections 23-26 & 35-36 and in Township 7 South, Range 71 East, Sections 19&30 and in Township 8 South, Range 70 East, Sections 1 & 2 in Lincoln County, Nevada.

Locator:
Tonkin Springs LLC
2215 North 5th Street
Elko, NV 89801

Notes:
Location Monuments are set 10' from claim end lines unless noted otherwise. All location and corner monuments are 2" X 2" X 4" wooden posts with scribed metal tags. All claims are 600' by 1500' unless noted otherwise.



Location Map for GST 66-151 Lode Mining Claims Sheet 2 of 2



Location Map for GST 66-151 Lode Mining Claims
Tonkin Springs LLC 2215 North 5th Street Elko, NV 89801
GST_66-151-Claims_N27Z11FLdwg May 17, 2016
Drawn By: G.I.S. Land Services
Surveyed By: T&T Exploration L.L.C. Datum: 1927 Projection: UTM Zone 11 Units: Feet

0149770 Book 304 06/27/2016
Page 377 Page 2 of 2