

35

36

31

6S 70E

6S 71E

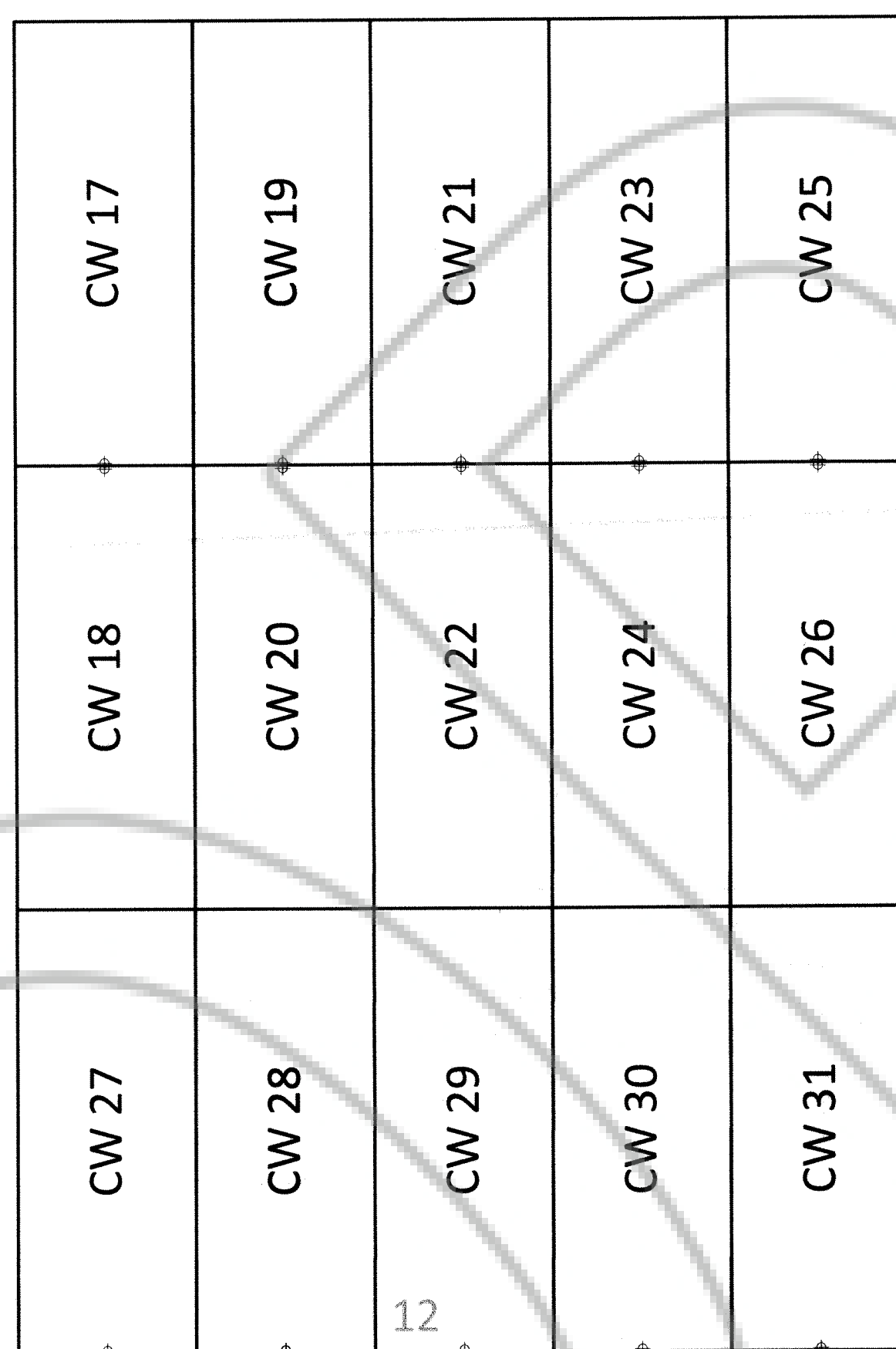
7S 70E

7S 71E

2

1

6



**Tie Point:**  
 The SE corner of CW 25 bears  
 959.61 feet @ 277.73° from the  
 NW corner of section 7, T7S R71E

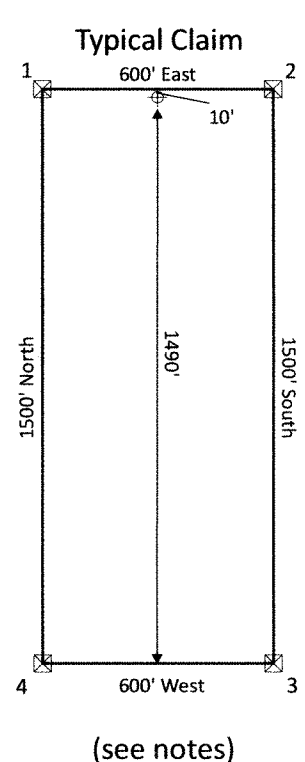
11

7

14

13

18



**Locator:**  
 Tonkin Springs LLC  
 2215 North 5th Street  
 Elko, NV 89801

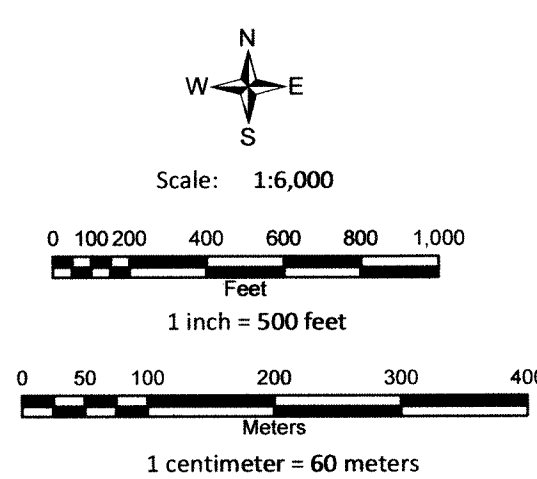
**Tie Point:**  
 The SE corner of CW 25 bears 959.61 feet  
 @ 277.73° from the NW corner of section 7, T7S R71E

**Location Dates**  
 CW 17-31 claims were located on  
 May 27, 2016

**Notes:**  
 Location monuments are set 10 feet from endline

All location monuments are 2"x2"x4' wooden posts with scribed metal tags.

All claims are 600'x1500'



**Legend**

- Location Monuments
- Claims

**CW 16-31 Unpatented Lode Mining Claims**

Sections 1, 12 Township 7 South, Range 70 East  
 Mt. Diablo Base Line and Meridian

Lincoln County, Nevada

**DOC # 0149683**

06/27/2016 03:57 PM  
**Official Record**  
 Recording requested By  
 TONKIN SPRINGS LLC  
 Lincoln County - NV  
 Leslie Boucher - Recorder  
 Fee: \$229.00 Page: 1 of 1  
 RPT: Recorded By: AE  
 Book- 304 Page- 0289

