

26

25

T7S R70E

T7S R71E

30

29

GST 46	GST 48	GST 50	GST 52	GST 54
GST 47	GST 49	GST 51	GST 53	GST 55

The SE corner of GST 55 bears 3,139.02 feet @ 252.884° from the NW corner of section 31, T7S R71E.

The NE corner of GST 64 bears 1,103.68 feet @ 148.029° from the NW corner of section 31, T7S R71E.

36

GST 56	GST 57	GST 58	GST 59	GST 61	GST 63	GST 65
				GST 60	GST 62	GST 64

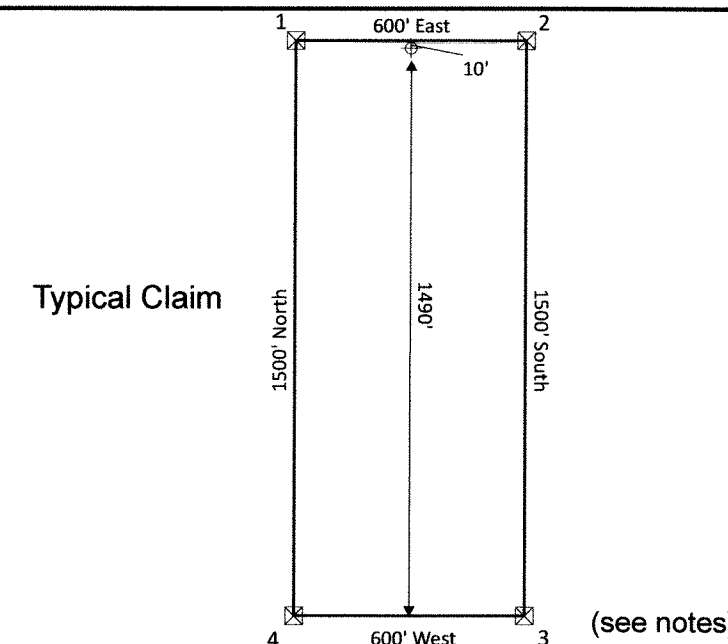
31

32

35

DOC # 0149362

05/27/2016 03:51 PM
Official Record
 Recording requested by
 TONKIN SPRINGS VENTURE
 Lincoln County - NV
 Leslie Boucher - Recorder
 Fee: \$304.00 Page 1 of 1
 RPTT Recorded by: HB
 Book- 303 Page- 0309



Location Dates
 GST 46-65 claims were located on March 27, 2016.

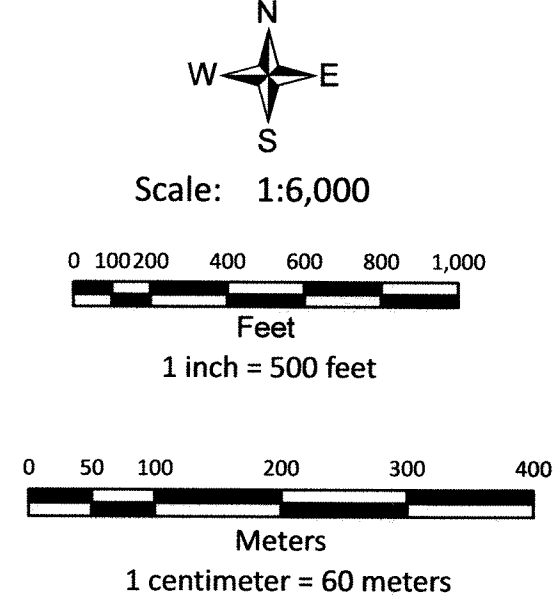
Notes:
 Location monuments are set 10 feet from endline.
 All location monuments are 2"x2"x4' wooden posts with scribed metal tags.
 All claims are 600'x1500'.

Locator:
 Tonkin Springs LLC
 1595 Meadow Wood Lane, Suite 3
 Reno, NV 89502

Tie Points:
 The NE corner of GST 64 bears 1,103.68 feet @ 148.029° from the NW corner of section 31, T7S R71E.

The SE corner of GST 55 bears 3,139.02 feet @ 252.884° from the NW corner of section 31, T7S R71E.

Legend
 + Location Monuments
 □ Claims



GST 46-65 Unpatented Lode Mining Claims
 Sections 25, 26, 35, 36, Township 7 South, Range 70 East
 Section 31, Township 7 South, Range 71 East
 Mt. Diablo Base Line and Meridian
 Lincoln County, Nevada