

26

25

30

29

35

36

31

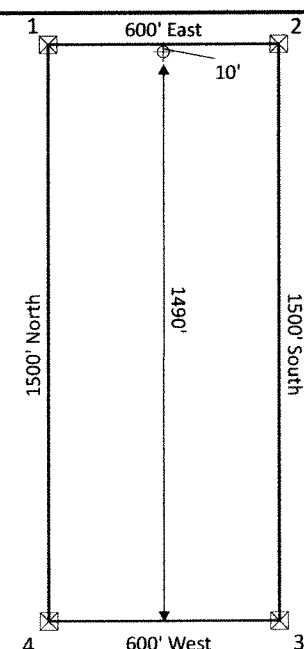
32

T7S R70E

T7S R71E

The SE corner of GST 16 bears 2,024 feet @ 117.21° from the NW corner of section 31, T7S R71E.

Typical Claim



(see notes)

**Location Dates**

GST 1-11 claims were located on January 11, 2016.  
 GST 12-33 claims were located on January 27, 2016  
 GST 34-45 claims were located on January 29, 2016

**Notes:**

Location monuments are set 10 feet from endline.

All location monuments are 2"x2"x4" wooden posts with scribed metal tags.

All claims are 600'x1500'.

**Locator:**

Tonkin Springs LLC  
 1595 Meadow Wood Lane, Suite 3  
 Reno, NV 89502

**Tie Point:**

The SE corner of GST 16 bears 2,024 feet @ 117.21° from the NW corner of section 31, T7S R71E.

**Legend**

- + Location Monuments
- Claims



Scale: 1:6,000  
 0 100 200 400 600 800 1,000  
 Feet  
 1 inch = 500 feet  
 0 50 100 200 300 400  
 Meters  
 1 centimeter = 60 meters

**GST 1-45  
 Unpatented Lode Mining Claims**

Sections 25, 35, 36, Township 7 South, Range 70 East  
 Sections 29-31, Township 7 South, Range 71 East  
 Mt. Diablo Base Line and Meridian

Lincoln County, Nevada

DOC # 0149070

03/24/2016 03:20 PM  
**Official Record**  
 Record-1110 - Requested By:  
 TOKKINS SPRINGS VENTURE  
 Lincoln County - NV  
 Leslie Boucher - Recorder  
 Fee: \$679.00 Page: 1 of 1  
 RPT1 Recorded By: HB  
 Book- 301 Page- 0604



0149070