

027

028

029

034

033

032

T1N R65E

T1S R65E

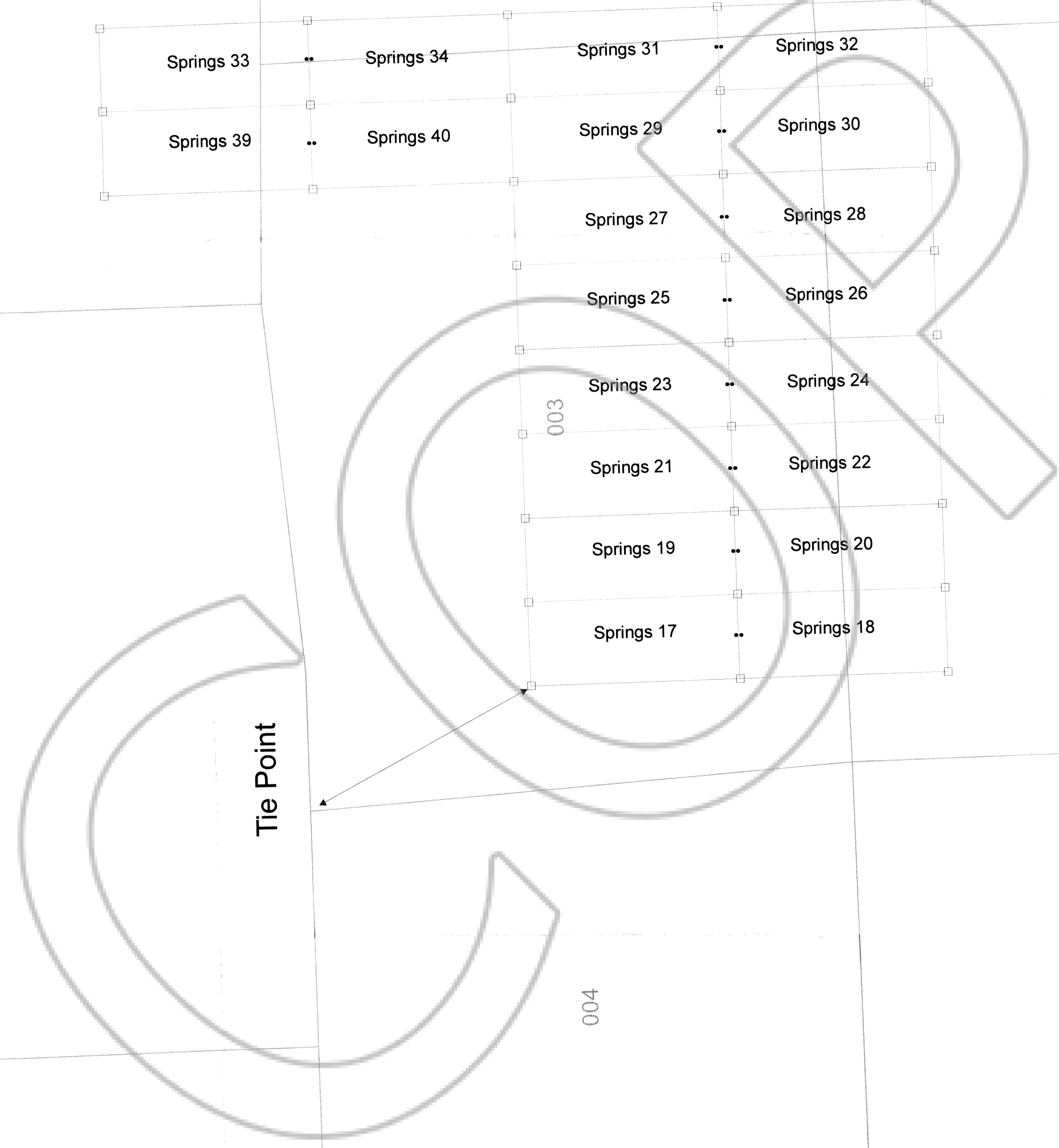
002

003

004

010

009



DOC # 0147514
 06/13/2015 03:34 PM
Official Record
 Recording Provided By:
 KINETIC CALLINAN GENERATIVE LLC
 Lincoln County - NV
 Leslie Boucher - Recorder
 Fee: \$304.00 Page 1 of 1
 RPT1 Recorded By: LB
 Book- 295 Page- 0295
 0147514

Springs 17-34, 39-40 Claims
 Ely Springs District
 Lincoln County, Nevada
 Sections 2, 3, 10, 11, T1S R65E, MDB&M
 Section 34, T1N R65E, MDB&M

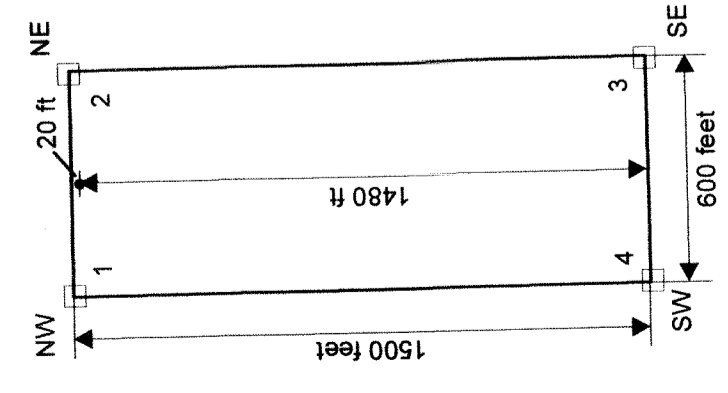
Located by: Gregory T. Hill
 agent for:

Kinetic Callinan Generative LLC

4790 Caughlin Pkwy. #410
 Reno, Nevada 89519

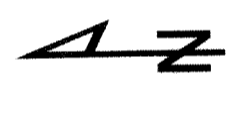
Date: May 11, 2015
 Drawn by: G. Hill

TYPICAL CLAIM



LEGEND

- claim corner
 - location monument
- Scale: 1 inch = 500 feet
 Feet
 0 500 1000 1500 2000 2500



NOTES: tie point - NW corner of Springs 17 is approximately 784 feet East and 1637 feet South of common corner Sec.3 (NW corner) and Sec. 4 (NE corner), T1S R65E, MDB&M.
 All monuments are 2 inch by 2 inch by 4 foot long wooden posts with a scribed metal tag.
 Location Date: 13 February 2015 - Springs 17-32
 14 February 2015 - Springs 33-34, 39-40