



0147312

33

T1N R65E

The NW corner of SES 21 bears 92.25 degrees
and is 3806.5 feet from the NE corner of
Section 4 T1S R65E

SES 21

Existing claims

3

T1S R65E

SES 21

Unpatented Lode Mining Claim

Section 3, Township 1 South, Range 65 East
Mt. Diablo Base Line and Meridian

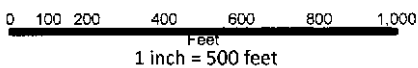
Lincoln County, Nevada

Legend

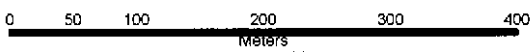
- Location Monument
- Claims



Scale: 1:6,000



1 inch = 500 feet



1 centimeter = 60 meters

Locator:

Tonkin Springs LLC
1595 Meadow Wood Lane #3
Reno, NV 89502

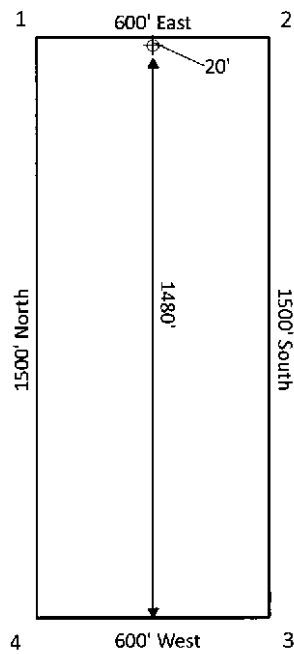
Location Dates

SES 21 was located on
January 21, 2015

Notes:

Location monuments are set 20 feet from endlines.
All location monuments are 2"x2"x4' wooden posts with scribed metal tags.
All claims are 600'x1500'

Typical Claim



(see notes)