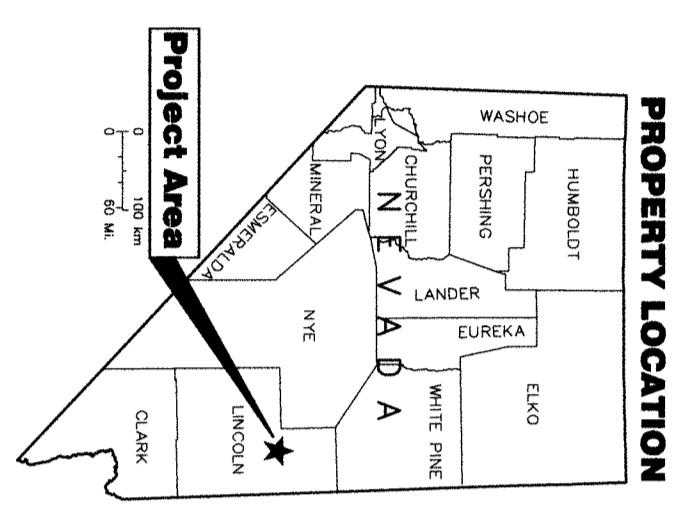
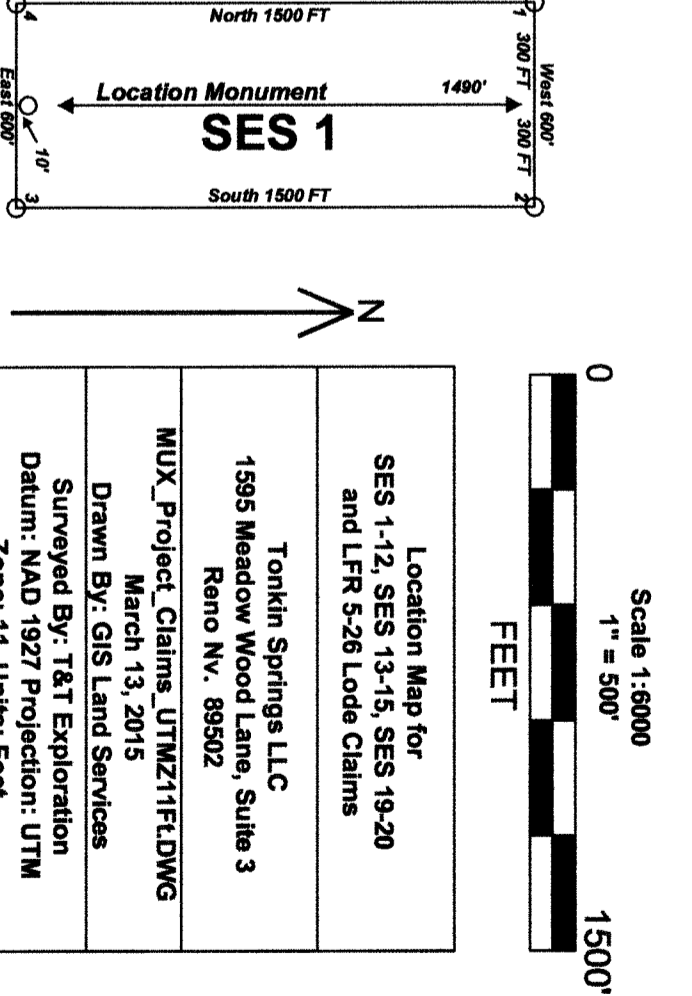


SES 1-12 were located on January 15, 2015 and
 LFR 4-8 were located on February 18, 2015 and
 LFR 9-26 and SES 13, 15 & 19 were located on February 19, 2015 and
 SES 14 & 20 were located on February 20, 2015 in
 Sections 21-22, 27-28, 33-34, Township 1 North, Range 65 East
 and
 Section 3, Township 1 South, Range 65 East
 in Lincoln County, Nevada



**Location Map for
 SES 1-12, SES 13-15, SES 19-20
 and LFR 5-26 Lode Claims
 Sheet 1 of 1**

Notes:
 Location Monuments are set 10' from
 claim end lines unless noted
 otherwise. All location and corner
 monuments are 2" x 2" x 4" wooden
 posts with scribed metal tags. All
 claims are 600' by 1500' unless noted
 otherwise.



Location Map for SES 1-12, SES 13-15, SES 19-20 and LFR 5-26 Lode Claims	Tonkin Springs LLC 1595 Meadow Wood Lane, Suite 3 Reno NV, 89502 MUX_Project_Claims_UTM271F.DWG March 13, 2015 Drawn By: GIS Land Services Surveyed By: T&T Exploration Datum: NAD 1983 Projection: UTM Zone: 11 Units: Feet
--	--