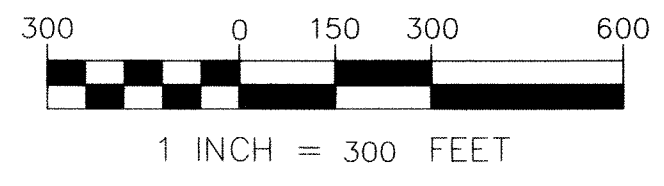


ARTISAN S.G.  
"WHERE ART & MEASUREMENT SCIENCE CONVERGE"  
GEODETIC NORTH

PORTION OF  
T. 3 S.  
R. 67 E.  
M.D.M.

GRAPHIC SCALE



**MONUMENTATION & RELATED MAP SYMBOLS**

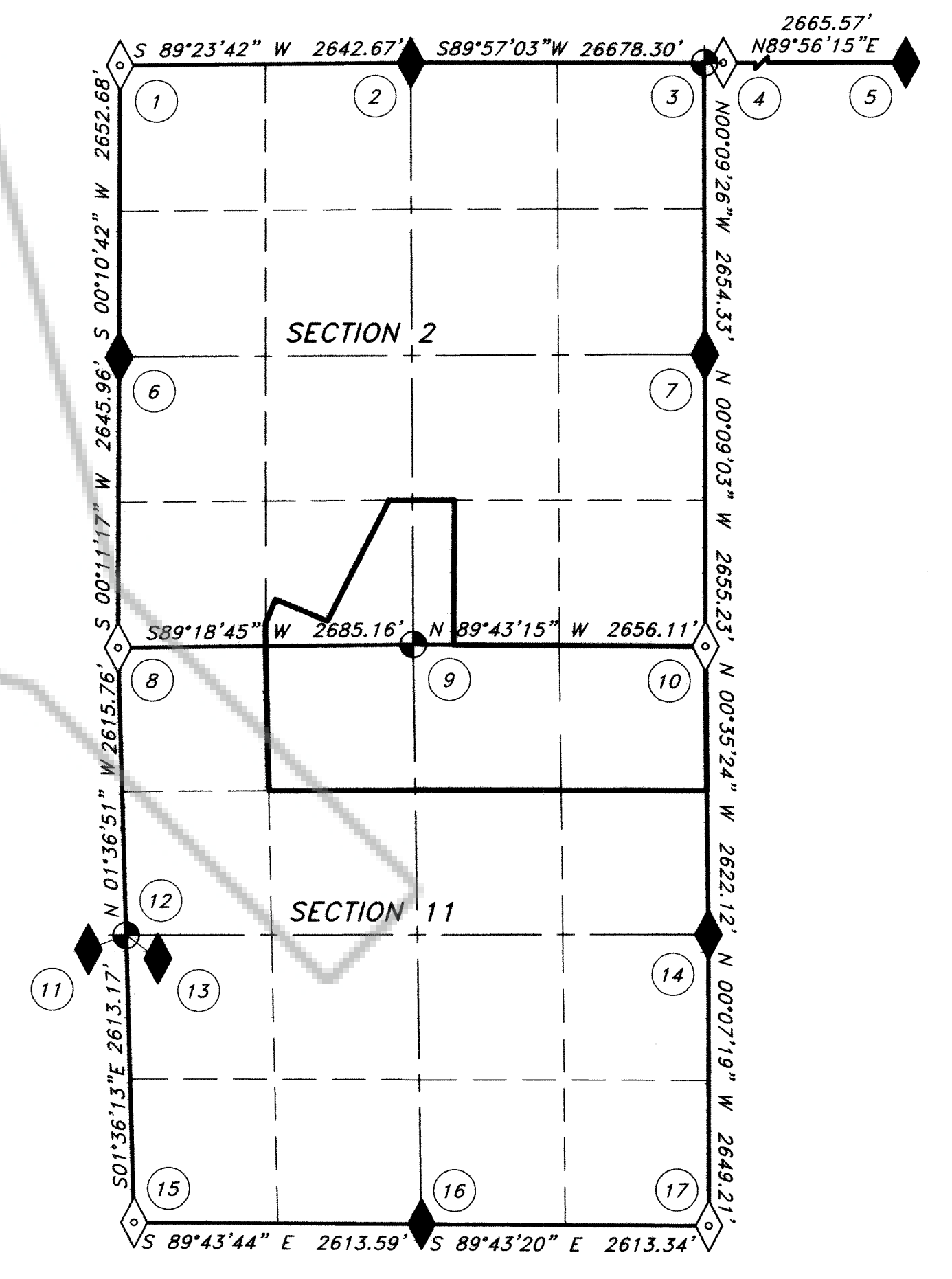
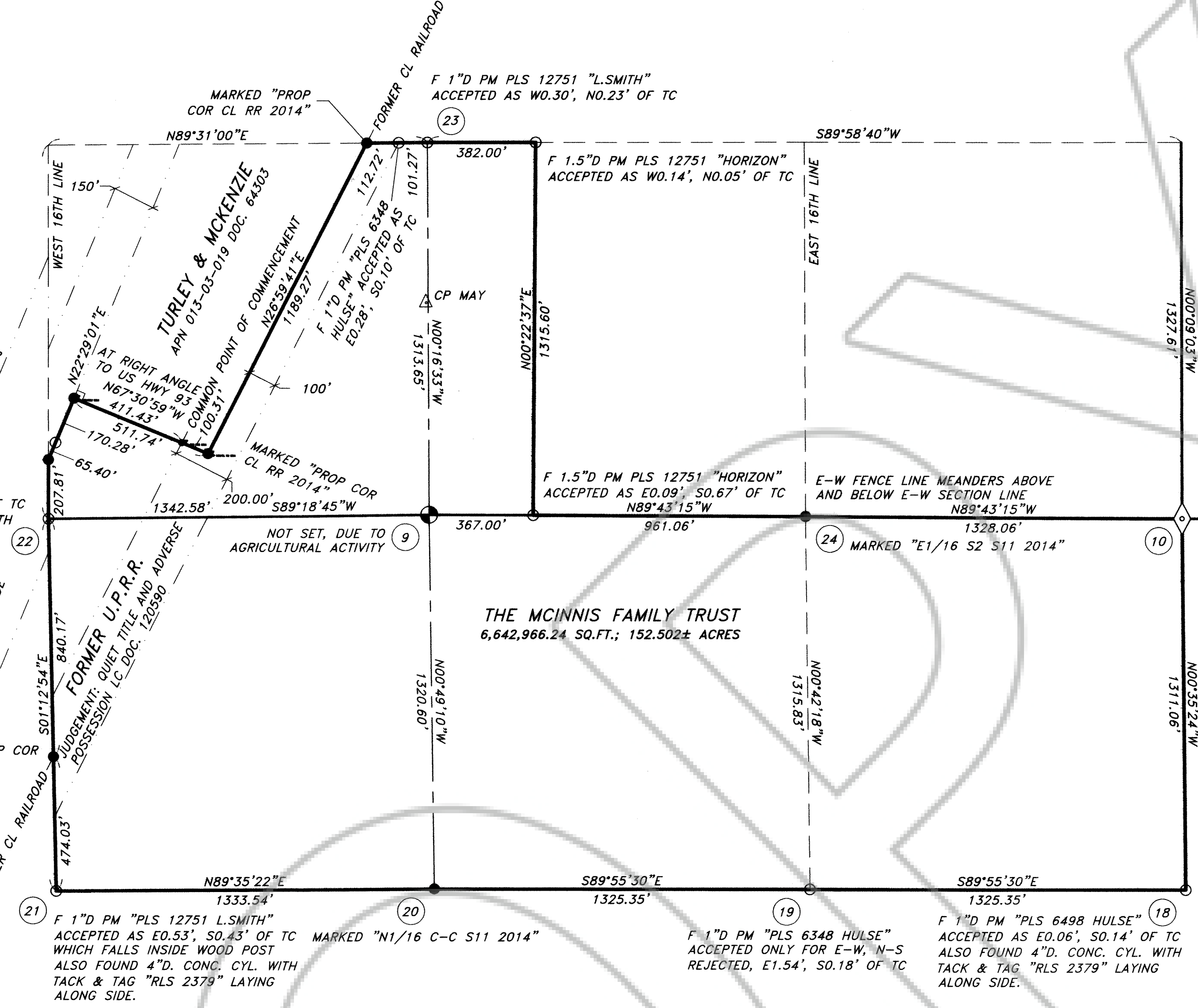
- ◊ FOUND SECTION CORNER, OR ACCESSORY AS NOTED
- ◆ FOUND 1/4 SECTION CORNER, OR ACCESSORY AS NOTED
- △ SET GEODETIC CONTROL POINT, AS NOTED
- ⊕ POSITION CALCULATED BY APPROPRIATE FEDERAL METHOD
- SET 1.5"D. AM ARTISAN PLS 9677 MONUMENT, AS NOTED
- FOUND MONUMENT, AS NOTED

**REFERENCES**

1. NEVADA REVISED STATUTES 240, 278, 327, 329, 533, 625 (ALSO NAC, AS APPLICABLE).
2. VARIOUS SUBDIVISION OF SECTIONS FIELD NOTES AND PLAT FOR TOWNSHIP 3 SOUTH, RANGE 67 EAST, APPROVED BY U.S. SURVEYOR GENERAL NEVADA, AND BLM CADASTRAL CHIEF.
3. TITLE REPORT NO. 01415-13145 PREPARED BY STEWART TITLE COMPANY, 810 IDAHO STREET, ELKO NEVADA 89801 DATED AS OF JUNE 16, 2014 AT 7:30 AM, CHERI MORRIS, TITLE OFFICER. SAID DOCUMENT ALSO INCLUDES COPIES OF ALL DOCUMENTS CITED UNDER SAID TITLE REPORT.
4. LINCOLN COUNTY DISTRICT COURT, RECORDS ON FILE ASSOCIATED WITH CASE NO. 53 11 2000LC.

**NOTES**

1. THE POSITION FOR THE QUARTER CORNER COMMON TO SECTIONS 2 AND 11 WAS RESTORED USING A GRANT-BOUNDARY METHOD TO PROTECT THE DEFLECTION NOTED ON THE OFFICIAL PLAT.
2. THE WEST QUARTER CORNER FOR SECTION 11 IS PERPETUATED BY THE LOCATION OF TWO INTERMEDIATE CONTROLLING CORNERS ESTABLISHED AT ONE CHAIN FROM EACH OF TWO BLM REFERENCE MONUMENTS, THE RESULTANT DISTANCES OF WHICH CONFIRM USE.
3. THE TRUE CORNER FOR SECTIONS 1, 2, 11, 12 WAS NOT SET BY THE BUREAU OF LAND MANAGEMENT. BLM ESTABLISHED A WITNESS CORNER 1.1 CHAINS EASTERLY OF THE TRUE CORNER, BY RULE ALONG THE RUNNING LINE. SAID WITNESS CORNER WAS RECOVERED IN THIS SURVEY AND IS USED IN ACCORDANCE WITH THE MANNER STIPULATED BY METHOD AS DEFINED BY SEQUENCE WITHIN THE RUNNING LINE FIELD NOTES. SAID POSITION IS ALSO NOT SET HEREIN DUE TO DELIMITING FEATURES CITED BY BLM CADASTRAL SURVEYOR CONCERNING THE LOCATION OF A DEEP SEDIMENTARY WASH WHEREIN STORM FLOWS CONSISTENTLY CARRY AND CONTINUE TO ERODE MATERIAL DOWNSTREAM.
4. THE CENTERLINE RAILROAD (NON-MONUMENTED AND TRACKS REMOVED) WAS ESTABLISHED BY THE MEASUREMENT OF THE PHYSICAL CENTER OF THREE WOODEN TRESTLES, EACH AGREEING WITHIN LESS THAN ONE TENTH FOOT WHEREIN SAID ALIGNMENT ALSO FAVORABLY CHECKED AGAINST REMAINING RAILROAD FENCELINES. JUDGEMENT FILED IN DOC. 120590 AND CASE FILE CONTAINED NO DEFINITION MAP. GEOMETRY UTILIZES A REVERSE DONATION METHOD OF EQUITY IN STRICT CONFORMITY WITH THE MCINNIS DECREEED JUDICIAL ORDER: "Together with the real property located within or between Parcels One and Two for which an easement or right-of-way for the purpose of constructing, repairing and maintaining a railroad or railway is dedicated, granted, used or abandoned."
5. THE NEVADA DEPARTMENT OF TRANSPORTATION MINIMIZED CADASTRAL RETRACEMENT DURING THE MONUMENTATION OF IMPROVEMENTS UNDER 1937 PROJECT ENTITLED NEVADA LINCOLN COUNTY ROUTE 7: SECTION C: F.A.P.85, AS INDICATED ON SHEET 7 OF 12. THE WESTERLY N-S SIXTEENTH LINE OF SECTIONS 2 AND 11 WAS NOT LOCATED BY SURVEY, BUT BY SCALING FROM AN UNMENTIONED SOURCE. AS A RESULT, NDOT CONSTRUCTION MONUMENTED THAT SCALED LINE, INCORRECTLY DEMARCATING A RIGHT OF WAY WIDTH CHANGE FROM 150 TO 400-FEET. THE RESULT OF THAT OMISSION PRECIPITATED IN THE CONSTRUCTION OF A LINE OF 6"SO. CONCRETE & BRASS PLUG RIGHT OF WAY MONUMENTS POSITIONED TOO FAR EAST ENCRANCHING ONTO PRIVATE LANDS IN AN AREA NOT GRANTED RIGHT OF WAY, NOR CO-OCCUPIED WITH IMPROVEMENTS AND THEREFORE NOT SUBJECT TO PRESCRIPTION. THE OMISSION SUBSEQUENTLY RESULTED IN THE ERRONEOUS ERECTION OF A PRIVATE FENCE WALL ALONG A THEORETICAL SIXTEENTH LINE THEREBY DELIMITING FULL USE OF VESTED LANDS. THIS SURVEY AND THE RESULTING GEOMETRY CORRECTS THAT CONDITION IGNORING NDOT MONUMENTS.
6. A LATENT AMBIGUITY EXISTS WITHIN THE GEOMETRIC CALLS OF PARAGRAPH 2 OF DEED, DOC. 121956, AS CONCERNS ABILITY TO MATHEMATICALLY CLOSE. EQUITABLE RESOLUTION OF GEOMETRIC CLOSURE BEST MANIFESTED IN OBSERVATION OF ADJACENT PROPERTY COMPARING TO STATE & U.S. PATENT CONVEYANCES CONTAINED WITHIN THE HEREIN CITED TITLE REPORT WITH SPECIAL COMPARISON AND CONSIDERATION TO THE ADJACENT VESTING DEED FOR APN 01303019. SAID DEED, A.K.A. DOC. 64303, IS A SEVENTH JUDICIAL COURT, DECREE OF DISTRIBUTION, DTD. MAY 24 1979. SAID ORDER DICTATES VESTING TO MARILYN TURLEY (ANDERSON) AND JOHN G. MCKENZIE CITING ASSETS AND LAND DESCRIPTION. SAID DEED ORDERS THE SOUTH LINE OF WHAT IS NOW 01303019 TO BE "AT RIGHT ANGLES" WEST TO US HIGHWAY 93" FROM THE POINT OF COMMENCEMENT; SAME ALSO MCINNIS' POINT OF TERMINUS. IN THE ABSENCE AND RECOGNITION OF NO OTHER EVIDENCE TO THE CONTRARY, SAID LINE ASCRIBED TO BE IN COMMON WITH MCINNIS.



CADASTRAL DIAGRAM 1" = 1200'

**BASIS OF BEARINGS (B.O.B.)**

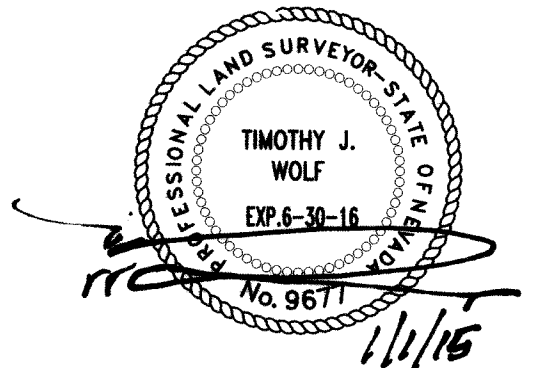
BASIS OF BEARINGS HEREON REPRESENTS A TRUE MERIDIAN PASSING THROUGH POINT "MAY" AT LATITUDE 37°42'37.95112"N, LONGITUDE 114°27'13.49584"W. THE BEARINGS HEREON THEREFORE REFLECT GEODETIC (GPS) NORTH USING SURVEY-GRADE EQUIPMENT FROM THE GEOGRAPHIC POINT, MAY & GLEE. EACH POINT IS CONSTRUCTED OF A 1.5" DIA. ALUMINUM MONUMENT ARTISAN PLS 9677. DATUM IS NGS 2002.00 UTILIZING APPROXIMATELY 60-HOURS OF STATIC DATA COLLECTED AT GLEE AND 24-HOURS AT POINT MAY.

**SURVEYOR'S CERTIFICATE**

I, TIMOTHY J. WOLF, A PROFESSIONAL LAND SURVEYOR, REGISTERED IN THE STATE OF NEVADA, ACTING AS AGENT FOR ARTISAN SURVEYING GROUP, A NV LLC, DO HEREBY CERTIFY THAT:

1. THIS PLAT REPRESENTS THE RESULTS OF A SURVEY CONDUCTED BY ME AT THE INSTANCE OF CLAY NANNINI FOR THE MCINNIS FAMILY TRUST DATED 10/06/03.
2. THE LANDS SURVEYED LIE WITHIN TOWNSHIP 03 SOUTH, RANGE 67 EAST, M.D.M., LINCOLN COUNTY, NEVADA, AND THE FIELD SURVEY WAS COMPLETED ON DEC. 12, 2014.
3. THIS PLAT COMPLIES WITH APPLICABLE STATE STATUTES AND ANY LOCAL ORDINANCES IN EFFECT ON THE DAY THAT THE GOVERNING BODY GAVE ITS FINAL APPROVAL, IF APPLICABLE.
4. THE MONUMENTS DEPICTED ON THIS PLAT ARE OF THE CHARACTER SHOWN, OCCUPY THE POSITIONS INDICATED, AND ARE OF SUFFICIENT NUMBER AND DURABILITY.

TIMOTHY J. WOLF  
PROFESSIONAL LAND SURVEYOR  
NEVADA CERTIFICATE NO. 9677  
AGENT, ARTISAN SURVEYING GROUP  
A NEVADA LIMITED LIABILITY COMPANY



**GEOGRAPHIC COORDINATES - CADASTRAL & CONTROL MONUMENTATION FOUND, SET OR CALCULATED PLSS CORNERS AS SHOWN HEREON**

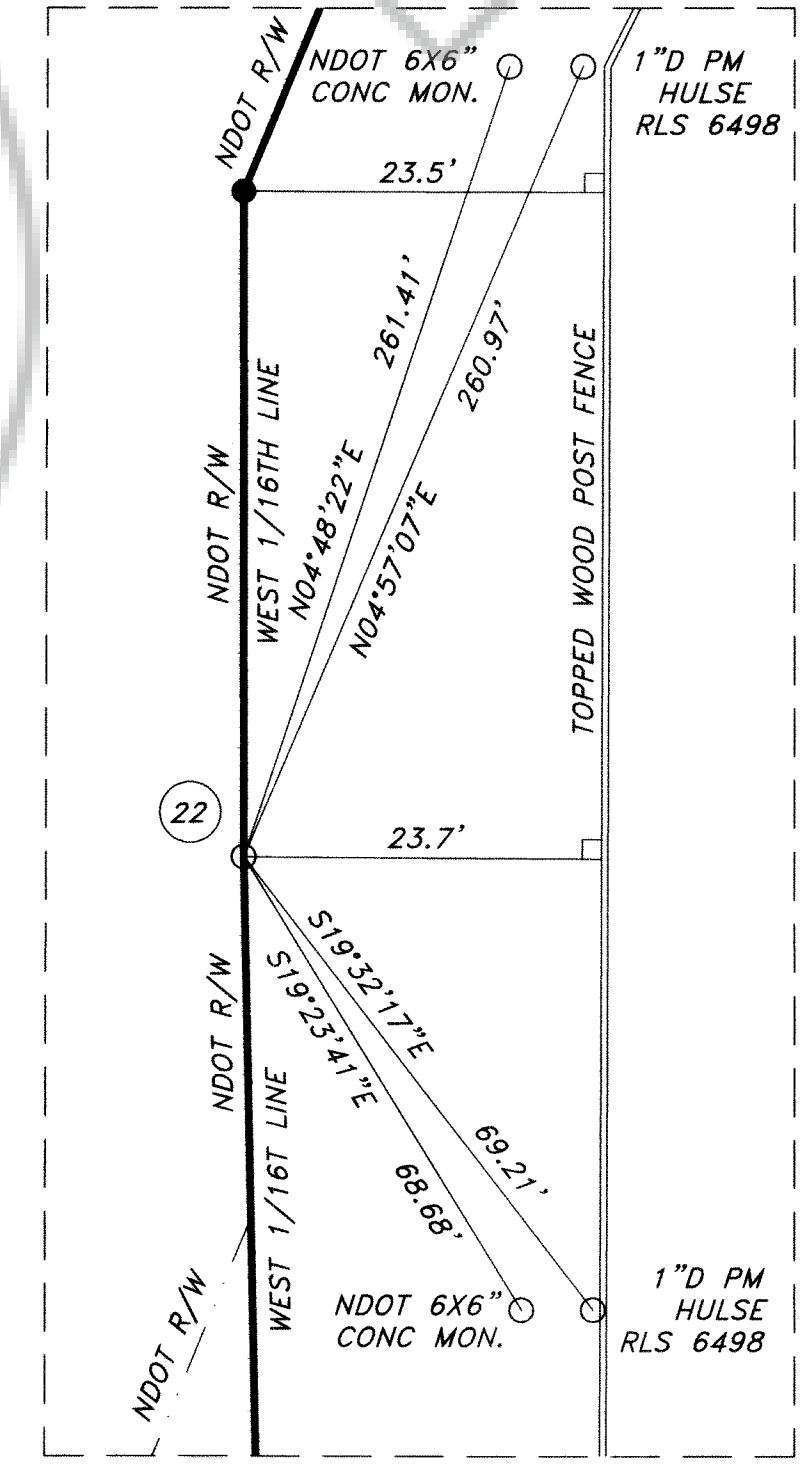
NO.	LATITUDE	LONGITUDE	EL. HGT.	DESCRIPTION
1.	37°43'22.60375"N	114°27'46.56770"W	4649.88	FOUND 3.5"D BLM BM 35/36/2/1 1971
2.	37°43'22.88367"N	114°27'13.68544"W	4543.12	FOUND 3.5"D BLM BM 1/4 35/2 1971
3.	37°43'22.90788"N	114°26'40.49484"W	N/A	CALCULATED SEC COR TRUE POINT
4.	37°43'22.90851"N	114°26'39.59144"W	4535.15	FOUND BLM BM WC 35/36/1/2 1971
5.	37°43'22.93548"N	114°26'07.32575"W	4597.28	FOUND BLM BM 1/4 36/1 1971
6.	37°42'56.38465"N	114°27'46.66373"W	4558.49	FOUND 3.5"D BLM BM 1/4 2/3 1971
7.	37°42'56.67241"N	114°26'40.40396"W	4521.36	FOUND 3.5"D BLM BM 1/4 1/2 1971
8.	37°42'30.23191"N	114°27'46.76502"W	4562.89	FOUND 3.5"D BLM BM 3/2/10/11 1971
9.	37°42'30.55450"N	114°27'13.36116"W	N/A	CALCULATED QTR COR TRUE POINT
10.	37°42'30.42810"N	114°26'40.91663"W	4511.32	FOUND 3.5"D BLM BM 1/2/11/12 1971
11.	37°42'04.06415"N	114°27'46.55446"W	4498.81	FOUND 3.25"D BLM BM RM 66.00'
12.	37°42'04.38800"N	114°27'45.84175"W	N/A	CALCULATED QTR COR TRUE POINT
13.	37°42'03.82285"N	114°27'45.43166"W	4497.28	FOUND 3.25"D BLM BM RM 66.00'
14.	37°42'04.51224"N	114°26'39.98052"W	4514.89	FOUND 3.25"D BLM BM 1/4 11/12 1971
15.	37°41'38.56943"N	114°27'44.92560"W	4483.73	FOUND NO. 5 REBAR & MND STN, NO MDN.
16.	37°41'38.45106"N	114°27'12.41632"W	4510.63	FOUND 3.25"D BLM BM 1/4 11/14 1971
17.	37°41'38.32726"N	114°26'39.91020"W	4549.10	FOUND 3.25"D BLM BM 11/12/13/14 1971
18.	37°42'17.47016"N	114°26'40.14856"W	N/A	CALCULATED CADASTRAL CORNER
19.	37°42'17.48689"N	114°26'56.63651"W	N/A	CALCULATED CADASTRAL CORNER
20.	37°42'17.50297"N	114°27'13.12445"W	4492.89	SET CADASTRAL CORNER ARTISAN
21.	37°42'17.40679"N	114°27'29.71391"W	N/A	CALCULATED CADASTRAL CORNER
22.	37°42'30.39354"N	114°27'30.06309"W	N/A	CALCULATED CADASTRAL CORNER
23.	37°42'43.53854"N	114°27'13.44161"W	N/A	CALCULATED CADASTRAL CORNER
24.	37°42'30.49161"N	114°26'56.83889"W	4507.40	SET CADASTRAL CORNER ARTISAN

'D' DIAMETER; 'N' NORTH; 'S' SOUTH; 'E' EAST; 'W' WEST; 'P' PLASTIC; 'A' ALUMINUM;  
'BR' BRASS; 'M' MONUMENT; 'WC' WITNESS CORNER; 'TC' TRUE CORNER; 'CP' CONTROL POINT;  
'BLM' BUREAU LAND MANAGEMENT; DATUM: NAD83 NGS CORS 2002.00

**CONVENTIONAL MAP SYMBOLS**

- FORMER AND CURRENT RIGHT OF WAY EXTENTS
- BOUNDARY 6,642,966.24 SQ.FT.; 152.502± ACRES
- SECTION, CENTERSECTION & SIXTEENTH LINES

**RIGHT OF WAY AREA DETAIL (EXAGGERATED SCALE)**



**RECORDER'S NOTE**

ANY SUBSEQUENT CHANGES TO THIS MAP SHOULD BE EXAMINED AND MAY BE DETERMINED BY REFERENCE TO THE COUNTY RECORDER'S CUMULATIVE MAP INDEX. NRS 279.5695

**ARTISAN SURVEYING GROUP, A NV LLC**  
"WHERE ART & MEASUREMENT SCIENCE CONVERGE"  
P.O. BOX 396  
PIOCHE, NEVADA 89043-0396  
(775) 962-LAND (5263)

CONTRACT: MCINNIS  
LOCATION: PANACA VALLEY  
NAME: MCINNIS, ROS.DWG SHEET  
REV. DATE: 01/01/15  
DRAWN: T.WOLF  
REVIEWED: C.NANNINI  
H.SCALE: 1"=300'  
V.SCALE: N/A SHEET(S)

**THE MCINNIS FAMILY TRUST**  
DATED 10/6/03  
FILED MARCH 17, 2004  
AS DOCUMENT NO. 121956  
LINCOLN COUNTY, NV

**DOC # 0146538**  
01/02/2015 03:41 PM  
**Official Record**  
Recorded and Indexed by  
ARTISAN LAND TRANSACTION ASSISTANTS  
Lincoln County - NV  
Leslie Boucher - Recorder  
Fee \$21.00 Page 1 of 1  
RPT. Recorded By: LB  
Book- D Page- 0143

**RECORD OF SURVEY RESULTS**  
RETRACING SECTIONS 2 & 11  
TO ESTABLISH PORTIONS THEREOF  
TOWNSHIP 3 SOUTH, RANGE 67 EAST  
M.D.M., LINCOLN COUNTY, NV