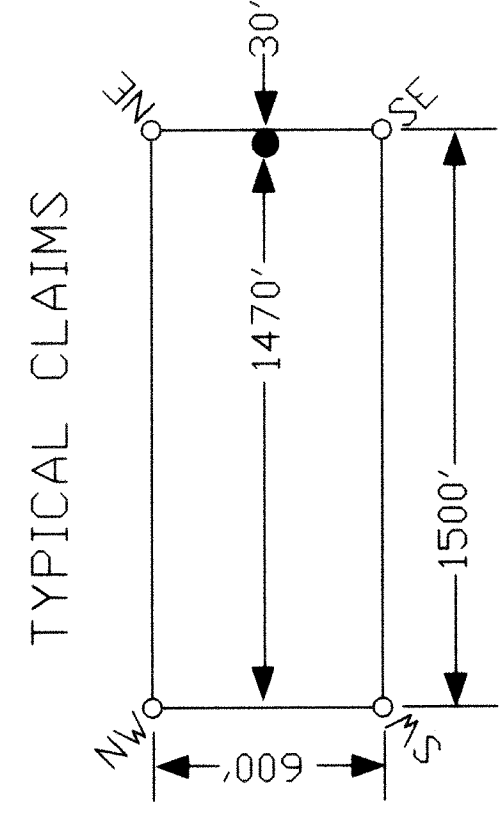
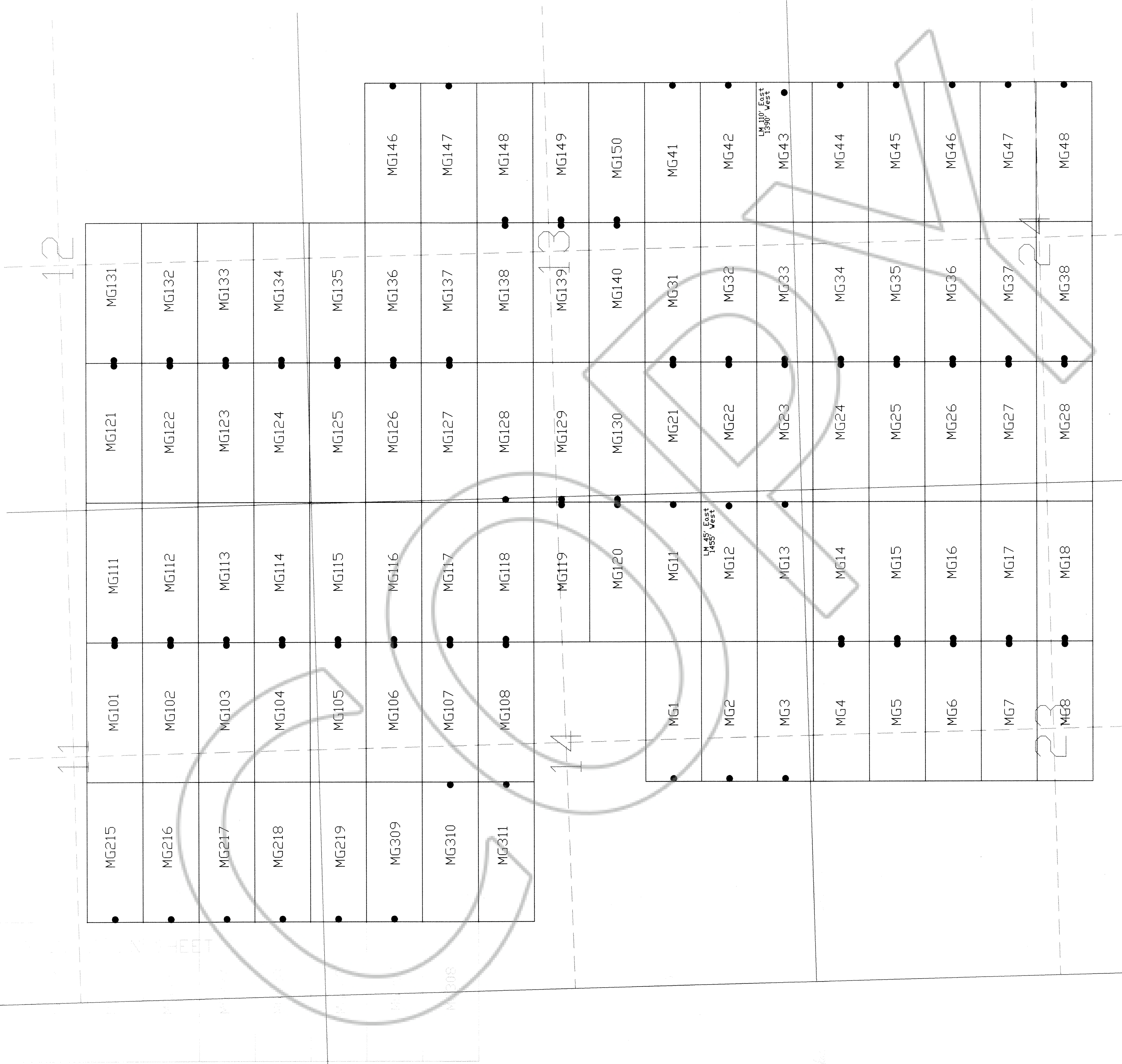


Notes: Location monuments are set 30' from claim end lines along claim center lines unless noted otherwise. All location and corner monuments are 1.5" x 1.5" x 4" wooden posts with scribed metal tags. All claims are 600' by 1500'

TIE POINT: THE NW CORNER OF MG 215 LIES APPROXIMATELY 11,584 FEET EAST AND 2,438 FEET SOUTH OF THE SURVEYED SOUTHWEST CORNER OF SECTION 4, T.1N., R.66E., M.D.B.M.



Scale 1" = 500'
1:6000



LOCATION DATES:

- May 13, 2014 - MG 1-8,11-18,21-28,31-38,41-48,108,118-120,128-130,138-140,148-150
- May 14, 2014 - MG 101-107,111-117,121-127,131-137,146-147,215-235,240-242,244-245,307-311
- May 15, 2014 - MG 236-239,246-279,293-306,312-319
- May 16, 2014 - MG 320-329

(185 Total Claims)

Locator: TRG USA Inc.
1930 Lassen Drive, Reno, Nevada 89503
MG Lode Claims
T.1N., R.66E.; Lincoln County, Nevada

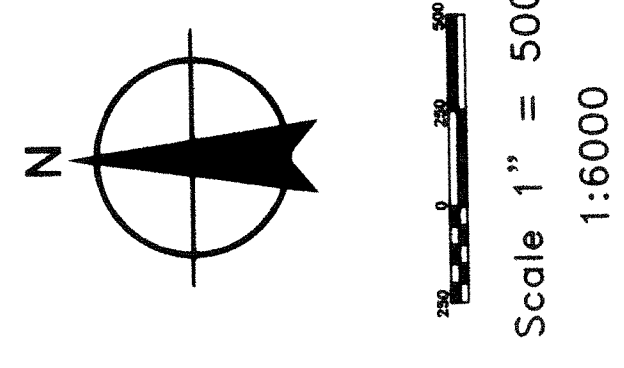
DOC # 0145984
08/07/2014 11:19 AM
Official Record
TRG USA Inc. Created By
Lincoln County - NV
Leslie Roucher - Recorder
Fee \$2,754.00 Page 1 of 2
Book- 289 Page- 0200
0145984



2

3

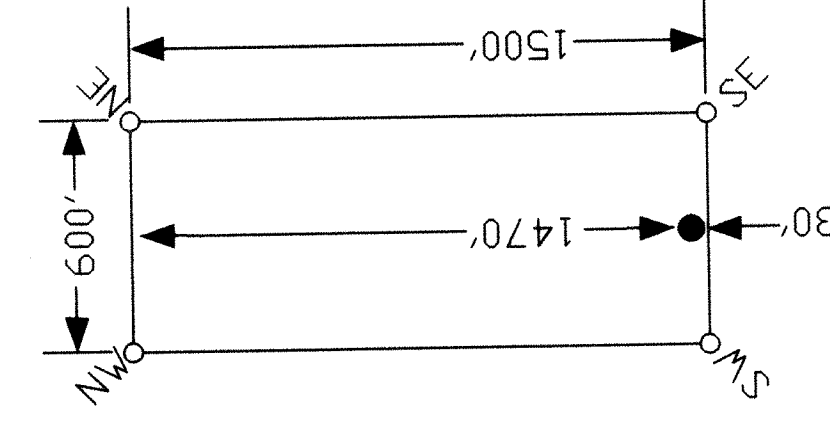
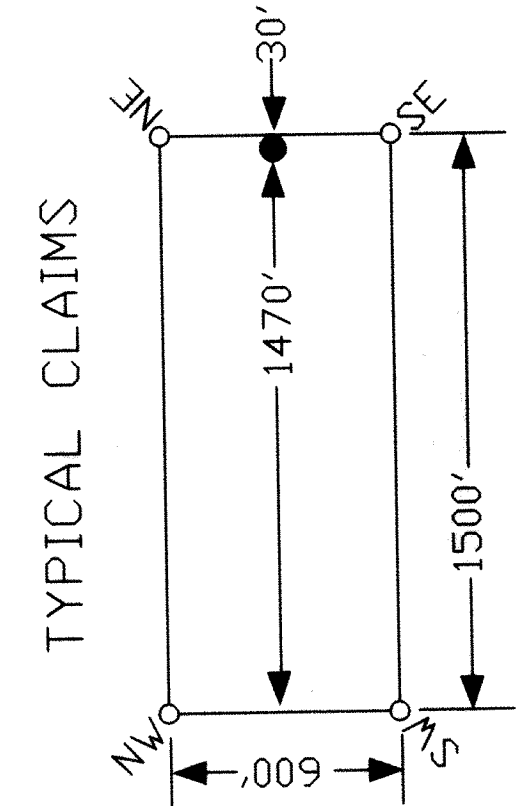
4



MG270	MG260	MG250	MG240	MG230	MG220
MG271	MG261	MG251	MG241	MG231	MG221
MG272	MG262	MG252	MG242	MG232	MG222
MG273	MG263	MG253	NONE	MG233	MG223
MG274	MG264	MG254	MG244	MG234	MG224
MG275	MG265	MG255	MG245	MG235	MG225
MG276	MG266	MG256	MG246	MG236	MG226
MG277	MG267	MG257	MG247	MG237	MG227
MG278	MG268	MG258	MG248	MG238	MG228
MG279	MG269	MG259	MG249	MG239	MG229
MG293	MG296	MG299	MG302	MG305	MG307
MG294	MG297	MG300	MG303	MG306	MG308
MG295	MG298	MG301	MG304	MG312	
			MG313	MG314	
			MG315	MG316	MG317
			MG318	MG319	
			MG320	MG321	MG322
			MG324	MG323	MG329
			MG325	MG326	MG327
			MG328	MG329	

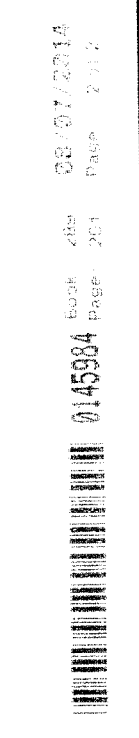
14

16



Notes: Location monuments are set 30' from claim end lines along claim center lines unless noted otherwise. All location and corner monuments are 15" x 15" x 4' wooden posts with scribed metal tags. All claims are 600' by 1500'

TIE POINT: THE NW CORNER OF MG270 LIES APPROXIMATELY 2,584 FEET EAST AND 562 FEET NORTH OF THE SURVEYED SOUTHWEST CORNER OF SECTION 4, T.1N., R.66E., M.D.B.M.



Location: **TRG USA Inc.**
 1930 Lassen Drive, Reno, Nevada 89503
 MG Lode Claims
 T.1N., R.66E.; Lincoln County, Nevada

DATE: May 2014
 DRAWN BY: [Name]
 CHECKED BY: [Name]
 PLOT SCALE: 1" = 500'

03.07.2014
 014594 Page 201

SHEET 1 OF 2

LOCATION DATES:
 May 13, 2014 - MG 1-8,11-18,21-28,31-38,41-48,108,118-120,128-130,138-140,148-150
 May 14, 2014 - MG 101-107,111-117,121-127,131-137,146-147,215-235,240-242,244-245,307-311
 May 15, 2014 - MG 236-239,246-279,293-306,312-319
 May 16, 2014 - MG 320-329
 165 Total Claims