

TIE POINT:

The NE corner of SKM 12 is located approximately 37,410 feet south and 2005 feet east of the SW corner of Section 36, T6N, R63E, M.D.M.

CLAIM LOCATION DATES:

December 6, 2013: SKM 7-13, 17-27, 36-37
 December 8, 2013: SKM 1-6, 14-16, 28-35, 38-59
 December 9, 2013: SKM 60-143
 December 10, 2013: SKM 144-170

NOTE:

SKM 14 is 1500 feet long and 300 feet wide.

T4N

DOC # 0145081

U.S. Survey
 Official Record
 Recorder of Lincoln County - NV
 Leslie Baucher - Recorder
 Fee: \$2,854.00
 Book: 205 Page: 0256



0145081

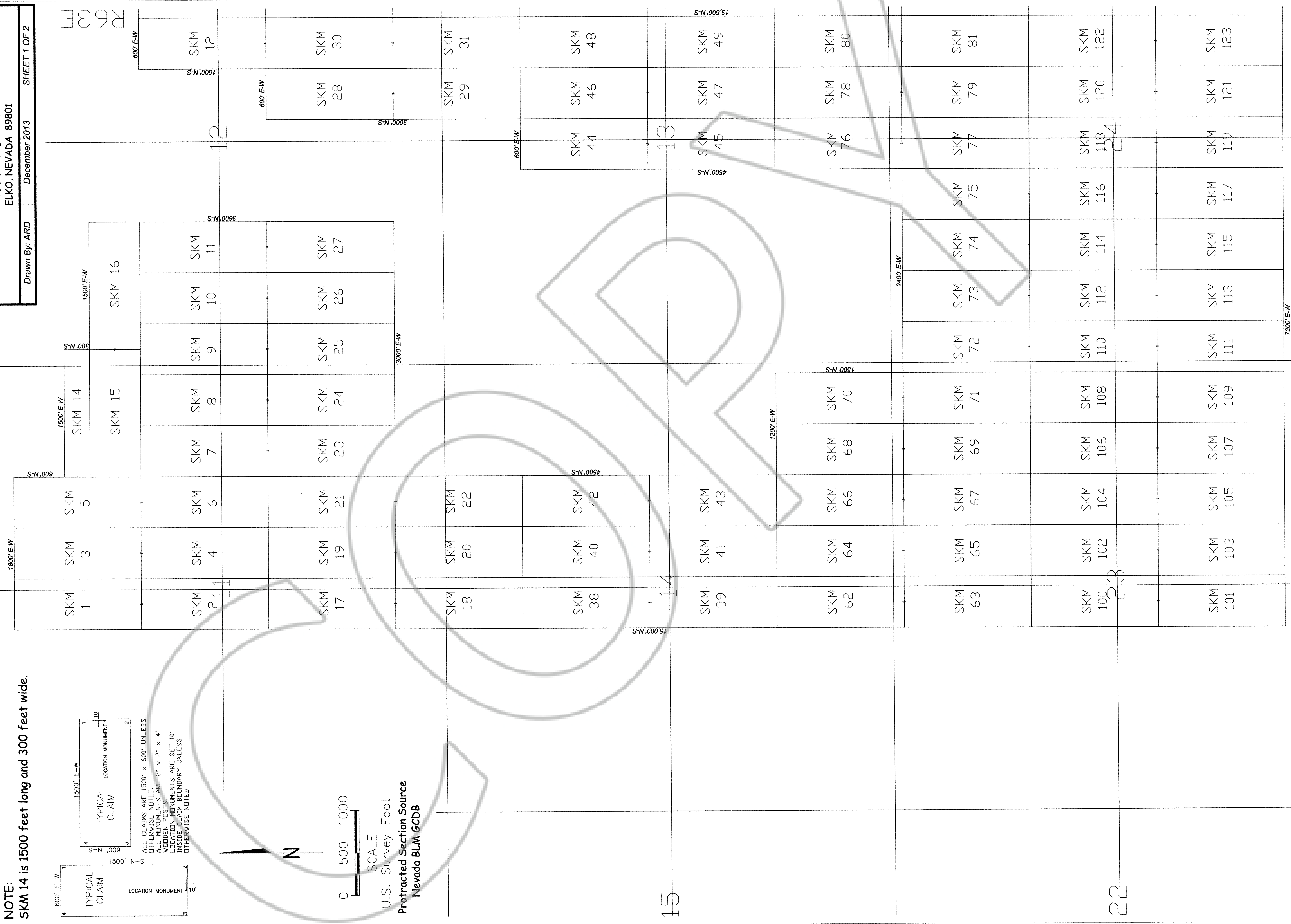
LODE MINING CLAIM MAP
SKM 1-170

T4N, R63-64E, M.D.M.
 LINCOLN COUNTY, NEVADA

Locator:
 BARRICK GOLD EXPLORATION INC.
 293 SPRUCE ROAD
 ELKO, NEVADA 89801

Drawn By: ARD December 2013

SHEET 1 OF 2



TIE POINTS:

The NW corner of SKM 13 is located approximately 37,410 feet south and 2005 feet east of the SW corner of Section 36, T6N, R63E, M.D.M.
 The SW corner of SKM 144 is located approximately 37,410 feet south and 3805 feet east of the SW corner of Section 36, T6N, R63E, M.D.M.

NOTES:

SKM 61 & 99 are 1500 feet long and 300 feet wide.

LODE MINING CLAIM MAP
SKM 1-170

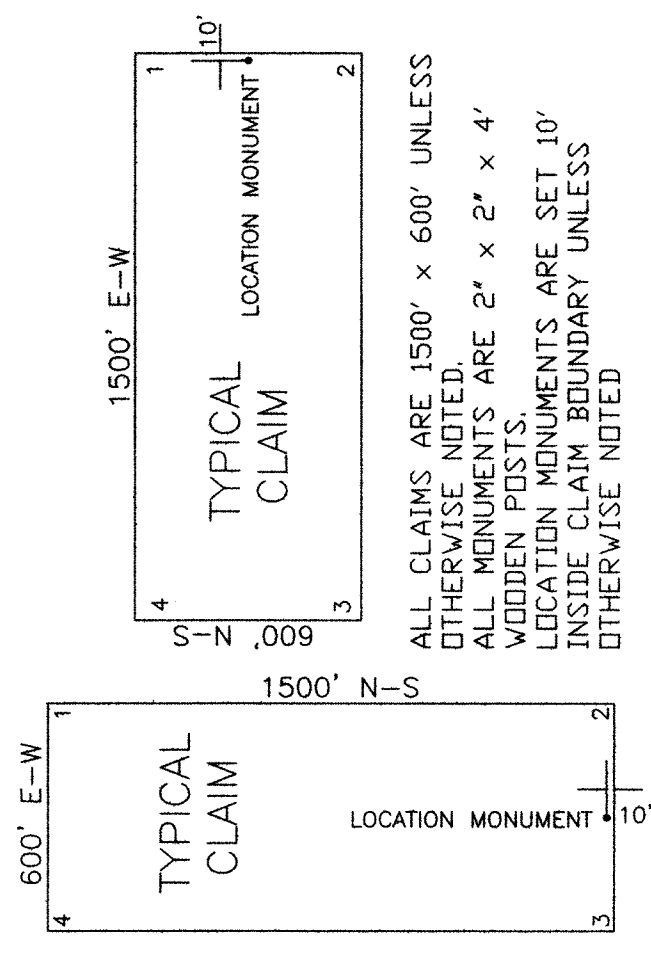
T4N, R63-64E, M.D.M.
 LINCOLN COUNTY, NEVADA

Locator:
 BARRICK GOLD EXPLORATION INC.
 293 SPRUCE ROAD
 ELKO, NEVADA 89801

Drawn By: ARD December 2013 SHEET 2 OF 2

CLAIM LOCATION DATES:

December 6, 2013: SKM 7-13, 17-27, 36-37
 December 8, 2013: SKM 1-6, 14-16, 28-35, 38-59
 December 9, 2013: SKM 60-143
 December 10, 2013: SKM 144-170

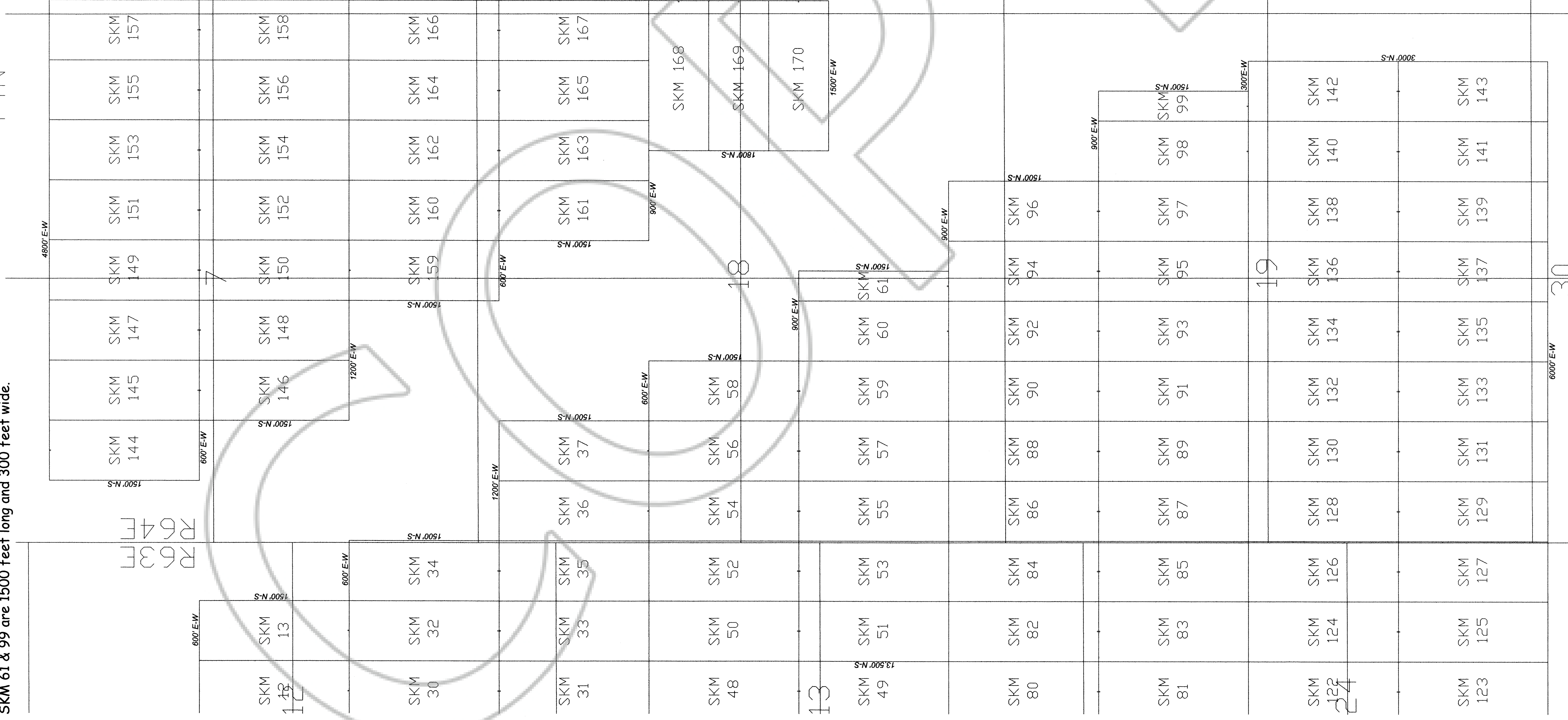


0 500 1000

SCALE

U.S. Survey Foot
 Protracted Section Source
 Nevada BLM GCDB

T4N



6000' E-W

30

29