

# MAP OF AMERICAN MUSEUM LODE CLAIMS

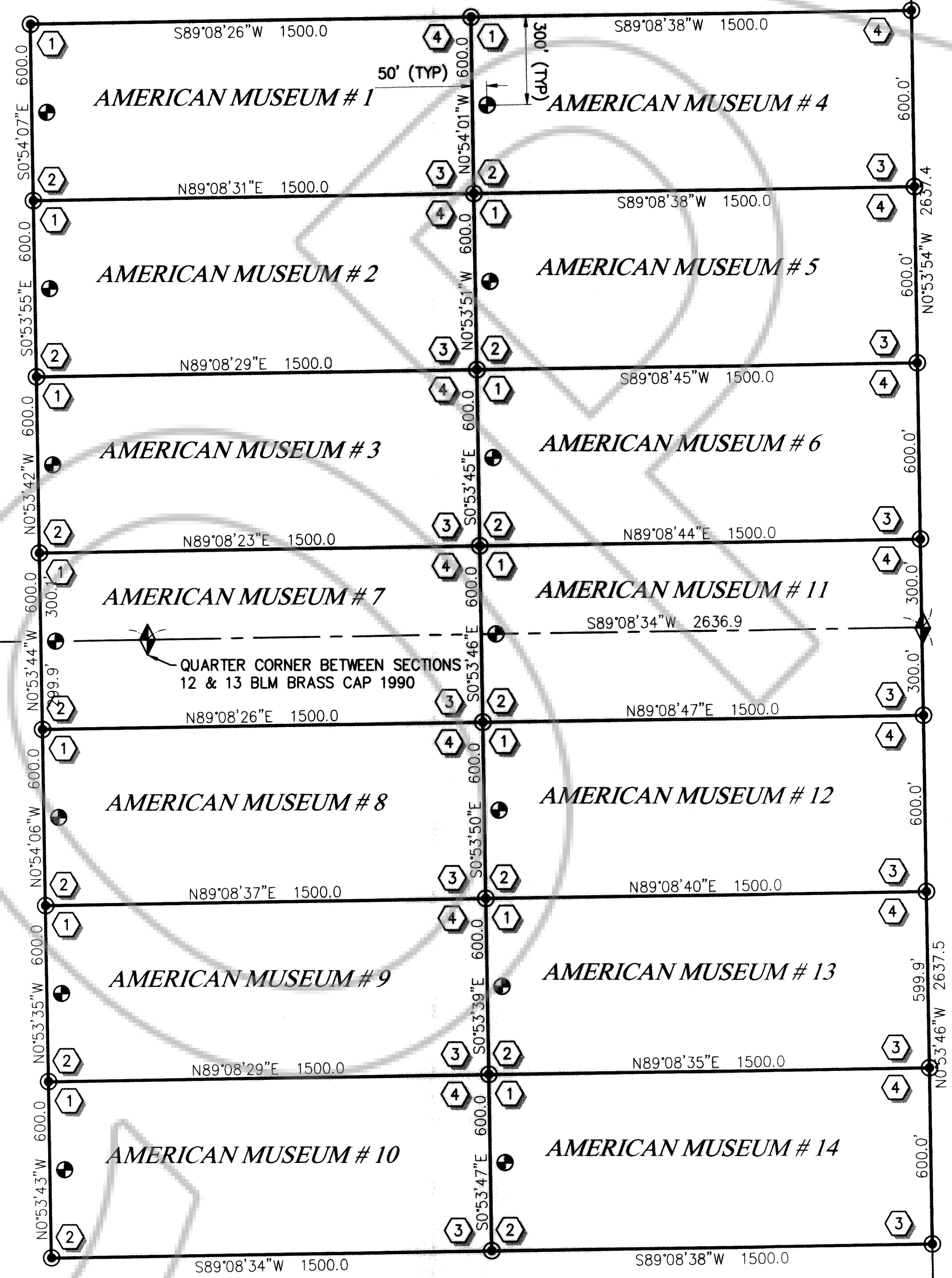
IN SECTIONS 12 & 13, TOWNSHIP 7 SOUTH, RANGE 70 EAST, MOUNT DIABLO  
 MERIDIAN, LINCOLN COUNTY NEVADA  
 UNKNOWN MINING DISTRICT  
 LOCATED OCTOBER 31, 2013 BY KAYSON ROHNER  
 2152 SOUTH VINEYARD ROAD SUITE 123  
 MESA, AZ 85210

DOC # 0144852  
 01/30/2014 09:25 AM  
**Official Record**  
 Recording requested by:  
 SUNRISE ENGINEERING  
 Lincoln County - NV  
 Leslie Boucher - Recorder  
 Fee \$214.00 Page 1 of 1  
 RPT# Recorded By: RE  
 Book- 285 Page- 0017  
 0144852

FOR LINCOLN COUNTY USE

SECTION 12

SECTION 13



EAST QUARTER  
 CORNER OF  
 SECTION 12  
 BLM BRASS CAP  
 1953

SOUTHEAST  
 QUARTER  
 CORNER OF  
 SECTION 12  
 NORTHEAST  
 CORNER OF  
 SECTION 13  
 BLM BRASS CAP  
 1953

COMMON CORNER FOR SECTIONS  
 11, 12, 13 & 14 BLM BRASS CAP 1990

### LEGEND

- SECTION MONUMENT
- MINING CLAIM CORNER MONUMENT
- WITNESS MONUMENT
- CORNER #

### LINE LEGEND

- SUBJECT BOUNDARY LINE
- OTHER PROPERTY LINE
- EASEMENT LINE
- SECTION LINE
- SUB-SECTION LINE
- RIGHT OF WAY LINE
- SURVEY TIE LINE
- FENCE LINE

**NOTE:**  
 ALL CORNERS AND WITNESS CORNERS WERE MONUMENTED  
 WITH A 4' LONG 2" BY 2" WOOD POST AND A 10" STEEL  
 SPIKE.

| REV. NO. | DATE | COMMENT     |
|----------|------|-------------|
| 0        |      | final draft |

**SUNRISE ENGINEERING**  
 12227 S. BUSINESS PARK DR, SUITE 220  
 DRAPER, UTAH 84020  
 TEL 801.523.0100 • FAX 801.523.0990  
 www.sunrise-eng.com

**AMERICAN MUSEUM LODE CLAIMS**

**AMERICAN MUSEUM  
 LINCOLN COUNTY, NEVADA**

|                  |                |             |               |                      |                |
|------------------|----------------|-------------|---------------|----------------------|----------------|
| SEI NO.<br>04674 | SURVEYED<br>KR | DRAWN<br>TE | CHECKED<br>KR | SHEET NO.<br>1 of 01 | <b>2013-26</b> |
|------------------|----------------|-------------|---------------|----------------------|----------------|

U:\American Museum\04674\Project\Design\3D\American Museum Claims.dwg Dec: 02, 2013 11:59am telly